

**Art. B472BU+D372AU**

### 3/4" Thermostatic mixer with 2-way diverter

- For horizontal installation
- 3/4" NPT inlets and 1/2" outlets
- With shut-off valve
- Rectangular backplate
- Handles included
- 8.9 GPM @ 60 PSI (primary outlet)
- 7.6 GPM @ 60 PSI (secondary outlet)

## Trim

### Finishes:

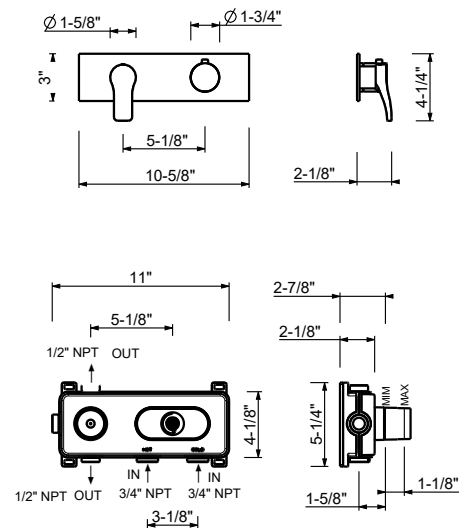
- |   |                    |              |
|---|--------------------|--------------|
|  | <b>Chrome</b>      | 26 02 B472BU |
|  | <b>Matte Black</b> | 26 13 B472BU |
|  | <b>Matte White</b> | 26 29 B472BU |

## Rough

### Finishes:

- 19 00 D372AU

**Project:**



### Certifications/Awards:

