

### Wall-mount tub filler

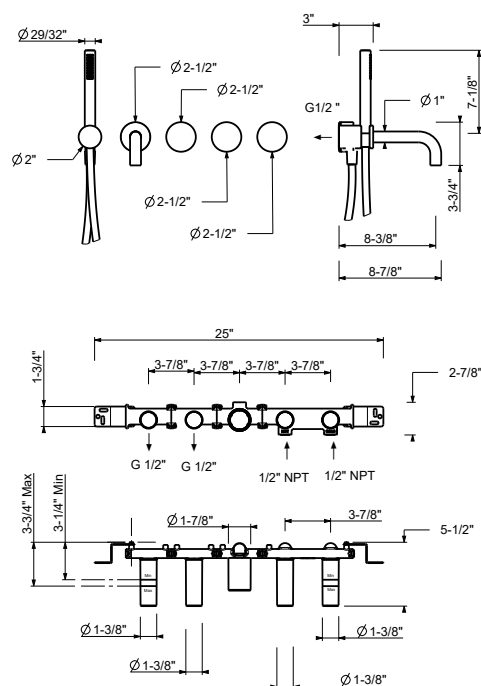
- 8 1/2" spout projection
- Cylindrical handshower with anti-siphon check valve
- 1/2" female inlets
- Handshower holder with 58" PVC hose and water outlet
- 2-way diverter
- 1/4 turn ceramic disc cartridge
- Handles included
- Water flow restricted to 1.8 GPM for handshower

### Finishes:

- |   |                                |              |
|---|--------------------------------|--------------|
|  | <b>Chrome</b>                  | 27 02 A819BU |
|  | <b>Matte Gun Metal PVD</b>     | 27 P5 A819BU |
|  | <b>Matte British Gold PVD</b>  | 27 P6 A819BU |
|  | <b>Matte Copper PVD</b>        | 27 P9 A819BU |
|  | <b>Brushed Stainless steel</b> | 27 93 A819BU |

### Finishes:

- 44 00 A819AU

**Certifications/Awards:**

**Project:**

## Room:

**Date:**

**Comments:**