

# FONTANE BIANCHE

Salvatori + Fantini

TECHNICAL MANUAL

# FONTANE BIANCHE

design Elisa Ossino



P5 P404BU+P404AU  
P5 P404C

WASHBASIN	p. 11
BIDET	p. 19
SHOWER	p. 21
TUB	p. 31

## Technical information

**All FONTANE BIANCHE articles are supplied WITH HANDLES.**

Washbasin and bidet mixers are **restricted to 1.2 gpm.**

### - PROGRESSIVE CARTRIDGE MIXERS

By turning the handle counterclockwise, both the water flow and temperature increase simultaneously.

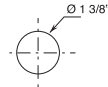
### - TRADITIONAL CARTRIDGE MIXERS

Water flow and temperature are controlled independently.

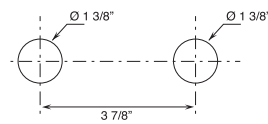
The flow is controlled by moving the lever up and down, the temperature by turning left for warmer and right for colder water.

### HOLE SIZE GUIDELINES:

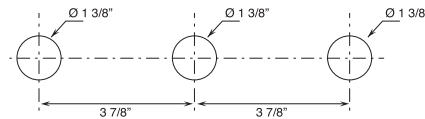
#### - Single-hole bidet mixers



#### - Two-hole washbasin mixers.



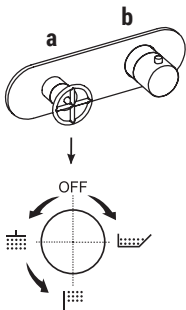
#### - Three-hole washbasin mixers.



**The 3/4" thermostatic shower mixer is available with integrated volume controls in these versions:**

- with one volume control (1 outlet) P372BU + D331AU
- with 2-way diverter (2 outlets) P372BU + D372AU
- with 3-way diverter (3 outlets) P372BU + D373AU

Diverter **include volume control** and **do not allow to share functions.**



### OPERATION EXAMPLE:

#### **P372BU + D373AU**

- a) **rotating diverter with volume control:** from the OFF position, the first function is activated by rotating the knob clockwise, volume increases progressively. The second and third are activated in sequence turning the handle counterclockwise.
- b) **temperature control** with safety override button at 100° F.

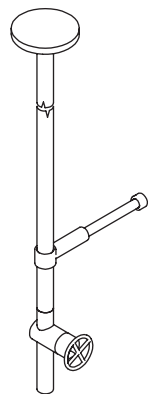
### Base materials:

BRASS

### Finish:

P5 Matte Gun Metal PVD

## PROGRESSIVE CARTRIDGE

**Ceiling-mount washbasin mixer***\_53 1/8" spout length***P404BU+P404AU**

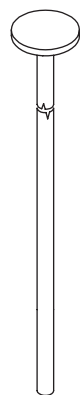
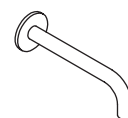
WITHOUT DRAIN

**Two-hole washbasin mixer***\_7 1/8" spout projection***P107WU**

WITHOUT DRAIN

**Single-hole bidet mixer***\_5 1/4" spout projection***P008WU**

WITHOUT DRAIN

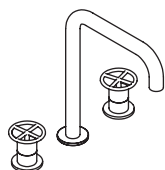
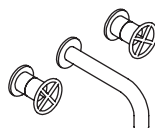
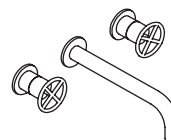
**Deck-mount remote control****P495U****Ceiling-mount washbasin spout***\_55 1/8" spout length***P494U****Deck-mount washbasin spout***\_7 1/8" spout projection***8441U****Wall-mount washbasin spout***\_5 7/8" spout projection***8442U****Wall-mount washbasin spout***\_8" spout projection***8443U**



## TRADITIONAL CARTRIDGE

**Wall-mount washbasin mixer**  
\_5 7/8" spout projection**P110BU+M011AU**  
WITHOUT DRAIN**Wall-mount washbasin mixer**  
\_7 7/8" spout projection**P113BU+M011AU**  
WITHOUT DRAIN**Built-in mixer**  
\_1/2" inlets**P063BU+M063AU**  
1 outlet

## 1/4 TURN CERAMIC DISC CARTRIDGE

**Three-hole washbasin mixer**  
\_7 1/8" spout projection**P007WU**  
WITHOUT DRAIN**Wall-mount washbasin mixer**  
\_5 7/8" spout projection**P010BU+R010AU**  
WITHOUT DRAIN**Wall-mount washbasin mixer**  
\_7 7/8" spout projection**P013BU+R010AU**  
WITHOUT DRAIN

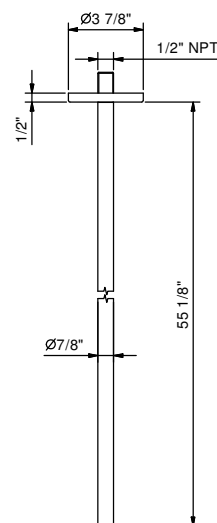
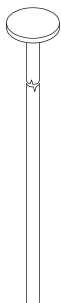


**P494U****Ceiling-mount washbasin spout**

- 55 1/8" spout length
- Water flow restricted to 1.2 gpm

**Drain not included, please select W095U or W097U in the Miscellaneous Articles section.**

**To be used with P495U or P063BU+M063AU**



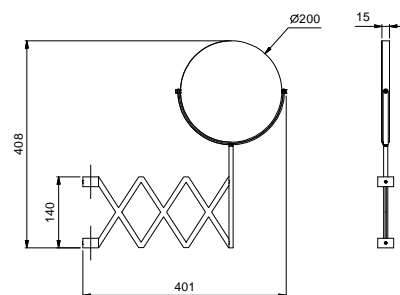
Matte Gun Metal PVD

47 P5 P494U

**P404C****Mirror**

- Magnifying mirror
- With fixed pantograph

**<b>The mirror is compatible with ceiling-mount washbasin mixer</b>  
**<b>P404BU+P404AU</b>****

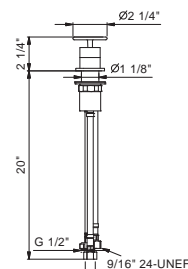


Matte Gun Metal PVD

47 P5 P404C

**P495U****Deck-mount remote control**

- Handle included
- Flexible supply lines included



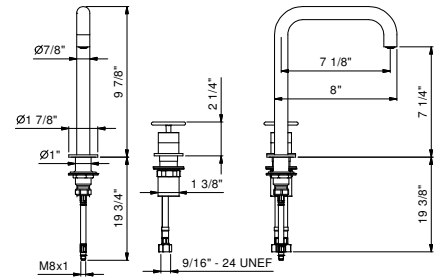
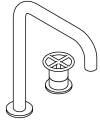
Matte Gun Metal PVD

47 P5 P495U

**P107WU****Two-hole washbasin mixer**

- 7 1/8" spout projection
- Handle included
- Flexible supply lines included
- Water flow restricted to 1.2 gpm

**Drain not included, please select W095U or W097U in the Miscellaneous Articles section.**



Matte Gun Metal PVD

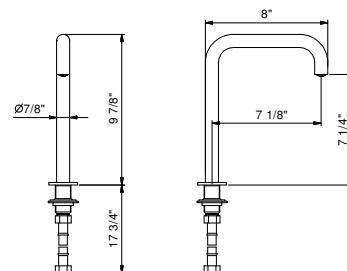
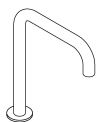
47 P5 P107WU

**8441U****Deck-mount washbasin spout**

- 7 1/8" spout projection
- Water flow restricted to 1.2 gpm

To be used with P495U or P063BU+M063AU

Drain not included, please select W095U or W097U in the Miscellaneous Articles section.



Matte Gun Metal PVD

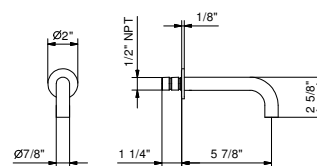
47 P5 8441U

**8442U****Wall-mount washbasin spout**

- 5 7/8" spout projection
- 1/2" NPT male connection
- Water flow restricted to 1.2 gpm

To be used with P495U or P063BU+M063AU

Drain not included, please select W095U or W097U in the Miscellaneous Articles section.



Matte Gun Metal PVD

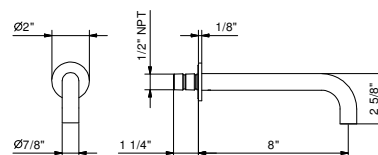
47 P5 8442U

**8443U****Wall-mount washbasin spout**

- 8" spout projection
- 1/2" NPT male connection
- Water flow restricted to 1.2 gpm

To be used with P495U or P063BU+M063AU

Drain not included, please select W095U or W097U in the Miscellaneous Articles section.



Matte Gun Metal PVD

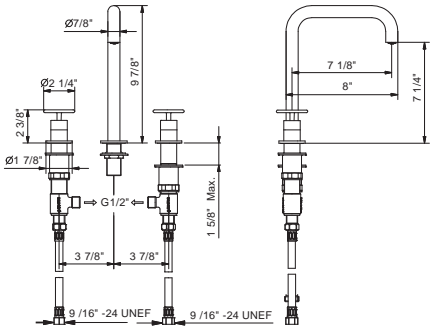
47 P5 8443U

## P007WU

### 3-hole washbasin mixer

- 7 1/8" spout projection
- Ceramic disc cartridges, 1/4 turn
- Flexible supply lines included
- Water flow restricted to 1.2 gpm

**Drain not included, please select W095U or W097U in the Miscellaneous Articles section.**



Matte Gun Metal PVD

47 P5 P007WU

### Wall-mount washbasin mixer

- 5 7/8" spout projection
- Ceramic disc cartridges, 1/4 turn
- 1/2" inlets
- Water flow restricted to 1.2 gpm

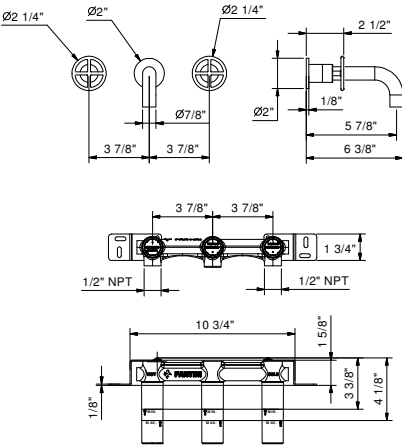
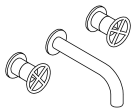
**Drain not included, please select W095U or W097U in the Miscellaneous Articles section.**

## P010BU

### Trim

Matte Gun Metal PVD

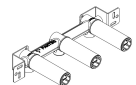
47 P5 P010BU



## R010AU

### Rough

44 00 R010AU





**Wall-mount washbasin mixer**

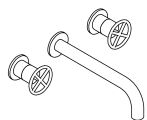
- 7 7/8" spout projection
- Ceramic disc cartridges, 1/4 turn
- 1/2" inlets
- Water flow restricted to 1.2 gpm

**Drain not included, please select W095U or W097U in the Miscellaneous Articles section.**

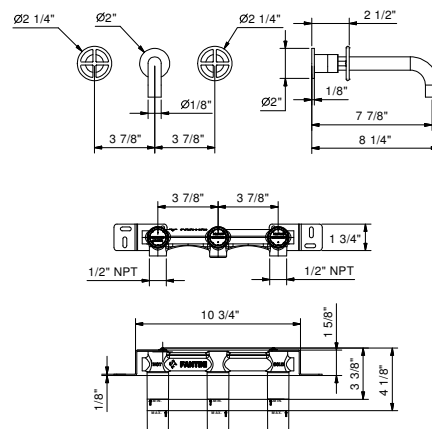
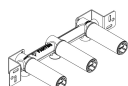
**P013BU****Trim**

Matte Gun Metal PVD

47 P5 P013BU

**R010AU****Rough**

44 00 R010AU



**Wall-mount washbasin mixer**

- 5 7/8" spout projection
- Water flow restricted to 1.2 gpm
- 1/2" NPT inlet

**Drain not included, please select W095U or W097U in the Miscellaneous Articles section.**

**P110BU**

**Trim**

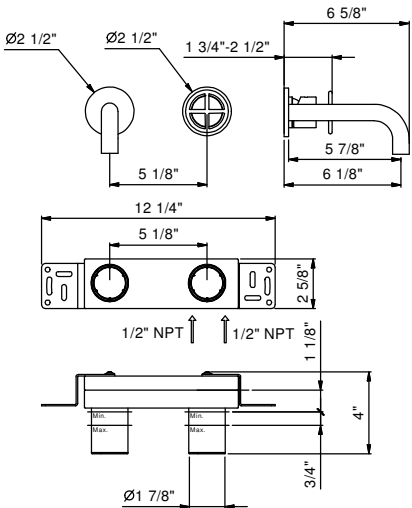
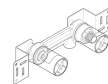
Matte Gun Metal PVD 47 P5 P110BU



**M011AU**

**Rough**

44 00 M011AU



**Wall-mount washbasin mixer**

- 7 7/8" spout projection
- Water flow restricted to 1.2 gpm
- 1/2" NPT inlet

**Drain not included, please select W095U or W097U in the Miscellaneous Articles section.**

**P113BU**

**Trim**

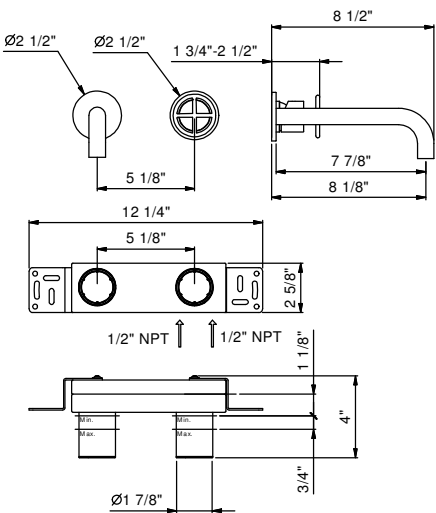
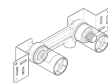
Matte Gun Metal PVD 47 P5 P113BU



**M011AU**

**Rough**

44 00 M011AU



**Built-in shower mixer**

- 7.6 gpm @ 60 psi
- 1/2" inlets
- Round escutcheon

**P063BU**

**Trim**

Matte Gun Metal PVD

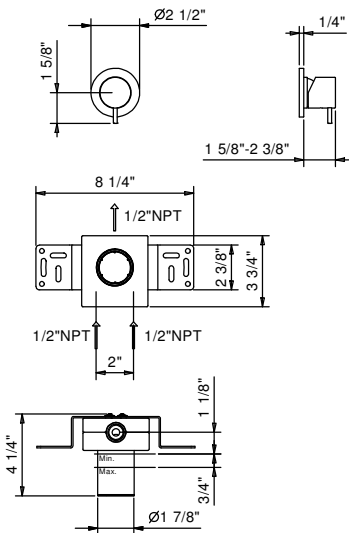
47 P5 P063BU



**M063AU**

**Rough**

44 00 M063AU

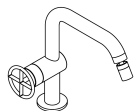


**P008WU**

**Single-hole bidet mixer**

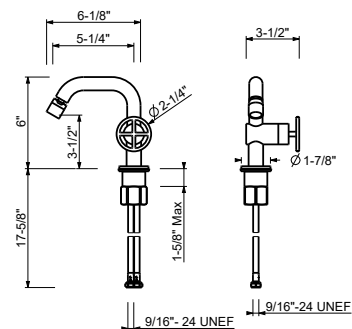
- 5 1/4" spout projection
- Progressive cartridge
- Flexible supply lines included
- Water flow restricted to 1.2 gpm

**Drain not included, please select W095U or W097U in the Miscellaneous Articles section.**

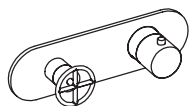
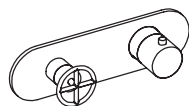
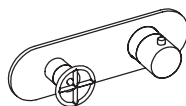


Matte Gun Metal PVD

47 P5 P008WU



## THERMOSTATIC CARTRIDGE

**Built-in shower mixer***\_3/4" inlets***P372BU+D331AU**volume control  
1 outlet**P372BU+D372AU**diverter  
2 outlets**P372BU+D373AU**diverter  
3 outlets**P300BU+D400AU****P391BU+D391AU**volume control  
1 outlet**P376BU+D376AU**diverter  
2 outlets**P376BU+D377AU**diverter  
3 outlets

### 3/4" Thermostatic mixer with integrated volume control

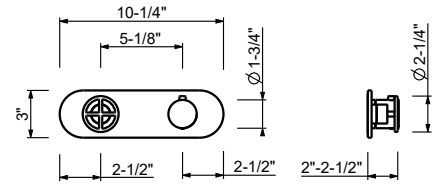
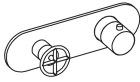
- Temperature control with safety override button at 100° F
- 3/4" NPT inlets, 1/2" outlet on rough
- Flow rate: 15.3 gpm @ 60 psi
- Anti-scald mechanism
- Watertight casing for added safety
- Accessible shut-off valves and filters
- For horizontal installation

**P372BU**

**Trim**

Matte Gun Metal PVD

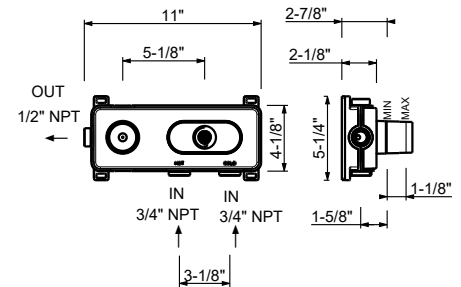
47 P5 P372BU



**D331AU**

**Rough**

19 00 D331AU



### 3/4" Thermostatic mixer with 2-way diverter

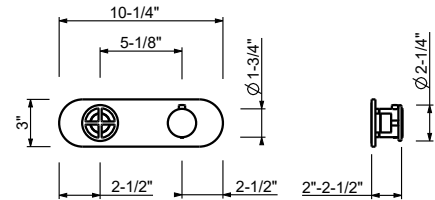
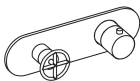
- Temperature control with safety override button at 100° F
- 3/4" NPT inlets, 1/2" outlets on rough
- Flow rate: 8.9 gpm @ 60 psi (primary outlet)
- Flow rate: 7.6 gpm @ 60 psi (secondary outlet)
- Anti-scald mechanism
- Watertight casing for added safety
- Accessible shut-off valves and filters
- For horizontal installation

**P372BU**

**Trim**

Matte Gun Metal PVD

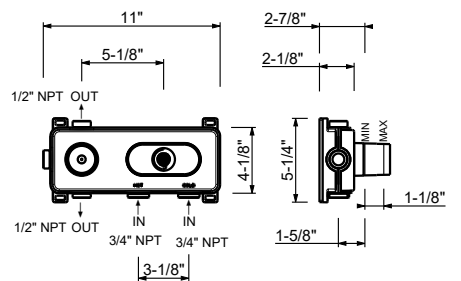
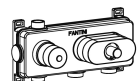
47 P5 P372BU



**D372AU**

**Rough**

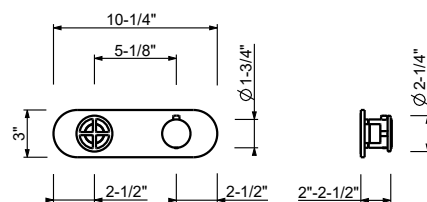
19 00 D372AU





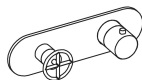
**3/4" Thermostatic mixer with 3-way diverter**

- Temperature control with safety override button at 100° F
- 3/4" NPT inlets, 1/2" outlets on rough
- Flow rate: 8.7 gpm @ 60 psi (primary outlet)
- Flow rate: 7.4 gpm @ 60 psi (secondary outlet)
- Flow rate: 7.4 gpm @ 60 psi (third outlet)
- Anti-scald mechanism
- Watertight casing for added safety
- Accessible shut-off valves and filters
- For horizontal installation

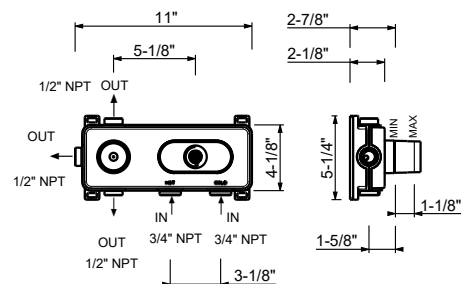
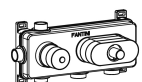
**P372BU****Trim**

Matte Gun Metal PVD

47 P5 P372BU

**D373AU****Rough**

19 00 D373AU

**3/4" Thermostatic shower mixer without volume control**

- Temperature control with safety override button at 100° F
- 3/4" NPT inlets and outlet on rough
- Flow rate: 16.9 gpm @ 60 psi
- Anti-scald mechanism
- Watertight casing for added safety
- Accessible shut-off valves and filters
- Compatible with Easy Fix art. # W213U and W214U

**To be used with volume control(s) or diverter(s):**

- volume control art. # P391BU+D391AU
- 2-way diverter art. # P376BU+D376AU
- 3-way diverter art. # P376BU+D377AU

**P300BU****Trim**

Matte Gun Metal PVD

47 P5 P300BU

**D400AU****Rough**

19 00 D400AU



## 3/4" Volume control

- For remote installation
- 3/4" NPT inlets and outlets
- Separate outlet for additional volume controls
- Sound insulation foam back
- 15.3 gpm @ 60 psi

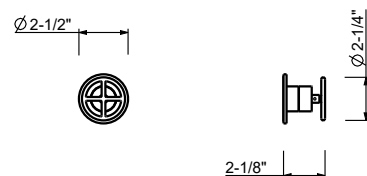
To be used with thermostatic mixer P300BU+D400AU

### P391BU

#### Trim

Matte Gun Metal PVD

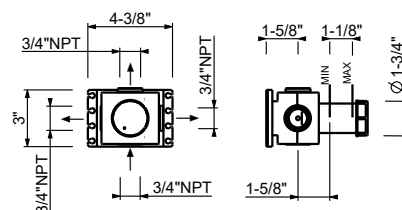
47 P5 P391BU



### D391AU

#### Rough

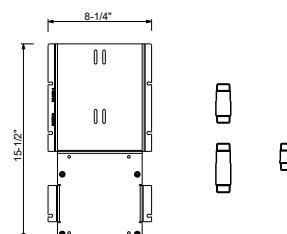
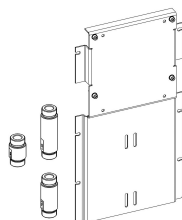
19 00 D391AU



### W213U

#### OPTIONAL - Easy Fix System

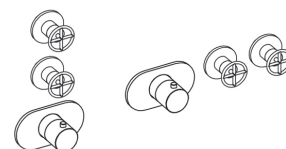
- Includes backplate and connections
- Only compatible with D400AU and D391AU
- **1 outlet:** D400AU + D391AU
- **2 outlets:** D400AU + (2) D391AU



EXAMPLE OF CONFIGURATION - 1 OUTLET



EXAMPLE OF CONFIGURATION - 2 OUTLETS

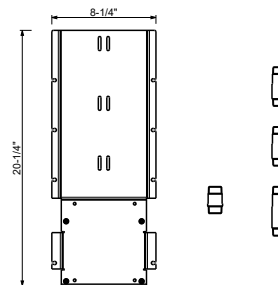
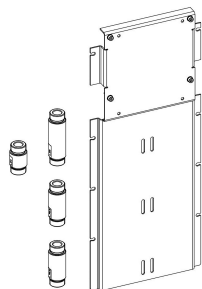


91 00 W213U

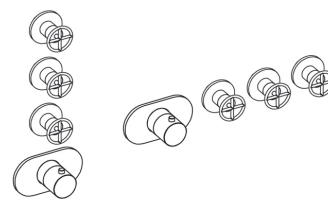
## W214U

### OPTIONAL - Easy Fix System

- Includes backplate and connections
- Suitable for vertical and horizontal installation
- **3 outlets:** D400AU + (3) D391AU



EXAMPLE OF CONFIGURATION - 3 OUTLETS



91 00 W214U

### 2-Way diverter with integrated volume control

- For remote installation
- 1/2" NPT inlets and outlets
- Accessible shut-off valves and filters
- Round backplate
- Flow rate: 8.9 gpm @ 60 psi (primary outlet)
- Flow rate: 7.6 gpm @ 60 psi (secondary outlet)

To be used with thermostatic mixer P300BU+D400AU

## P376BU

### Trim

Matte Gun Metal PVD

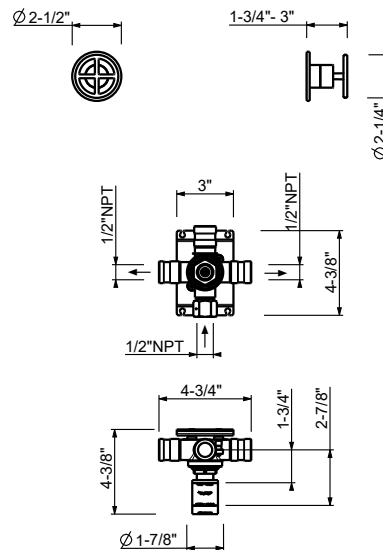
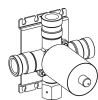
47 P5 P376BU



## D376AU

### Rough

19 00 D376AU



3-Way diverter with integrated volume control

- For remote installation
- 1/2" NPT inlets and outlets
- Accessible shut-off valves and filters
- Round backplate
- Flow rate: 8.7 gpm @ 60 psi (primary outlet)
- Flow rate: 7.4 gpm @ 60 psi (secondary outlet)
- Flow rate: 7.4 gpm @ 60 psi (third outlet)

To be used with thermostatic mixer P300BU+D400AU

P376BU

Trim

Matte Gun Metal PVD

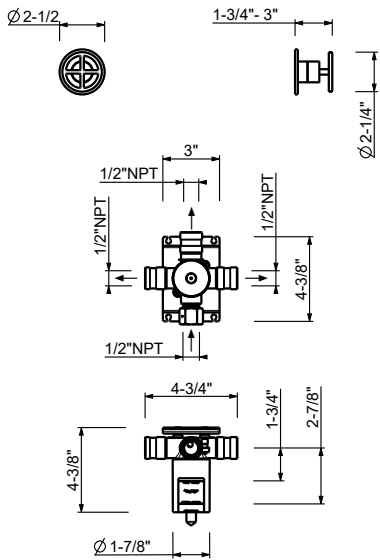
47 P5 P376BU



D377AU

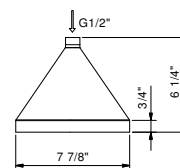
Rough

19 00 D377AU



**8106U****8" Round showerhead**

- Anti-limescale membrane
- Water flow restricted to 2.5 gpm

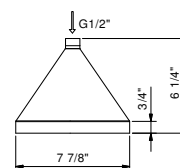


Matte Gun Metal PVD

47 P5 8106U

**8106UC****8" Round showerhead - Restricted to 1.8 gpm**

- Anti-limescale membrane
- Water flow restricted to 1.8 gpm

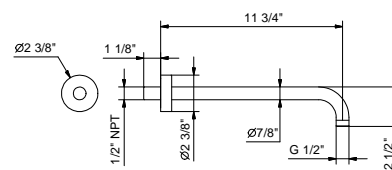
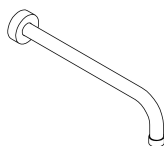


Matte Gun Metal PVD

47 P5 8106UC

**8027U****11 3/4" Wall-mount shower arm**

- Round escutcheon
- Curved angle
- 1/2" NPT male connection

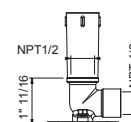


Matte Gun Metal PVD

47 P5 8027U

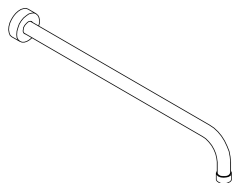
**OPTIONAL: Built-in part****W046U**

91 00 W046U



**8028U****18" Wall-mount shower arm**

- Round escutcheon
- Curved angle
- 1/2" NPT male connection

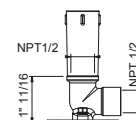
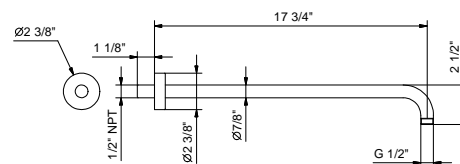


Matte Gun Metal PVD

47 P5 8028U

**OPTIONAL: Built-in part****W046U**

91 00 W046U

**9236U****10" Ceiling-mount shower arm**

- Round escutcheon
- 1/2" NPT male connection

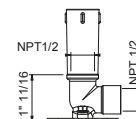
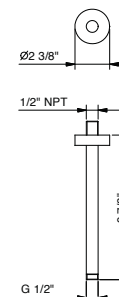


Matte Gun Metal PVD

47 P5 9236U

**OPTIONAL: Built-in part****W046U**

91 00 W046U

**9237U****18" Ceiling-mount shower arm**

- Round escutcheon
- 1/2" NPT male connection

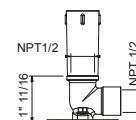
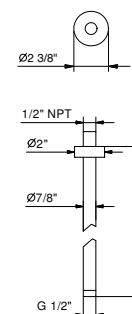


Matte Gun Metal PVD

47 P5 9237U

**OPTIONAL: Built-in part****W046U**

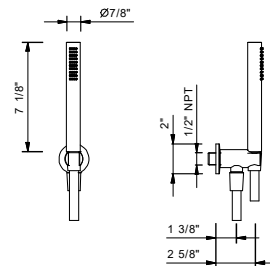
91 00 W046U





**8093U****Wall-mount handshower set**

- FIT handshower with anti-siphon check valve
- Anti-limescale membrane
- 58" vinyl hose
- Water outlet with holder
- Round escutcheon
- 1/2" NPT male connection
- Water flow restricted to 1.8 gpm



Matte Gun Metal PVD

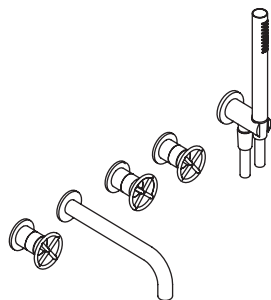
47 P5 8093U

CONFIGURATION.1	Art.	Description	Finish	
	8106U	8" Round showerhead	P5	Matte Gun Metal PVD
	P372BU+D372AU	3/4" Thermostatic mixer with 2-way diverter		
	8027U 8093U	11 3/4" Wall-mount shower arm Wall-mount handshower set		
	8106U	8" Round showerhead	P5	Matte Gun Metal PVD
	P372BU+D372AU	3/4" Thermostatic mixer with 2-way diverter		
	9237U 8093U	18" Ceiling-mount shower arm Wall-mount handshower set		

## 1/4 TURN CERAMIC DISC CARTRIDGE

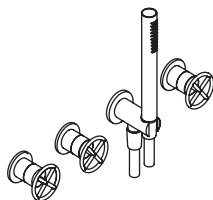
### Built-in bathtub mixer

*1/2" inlets*



**P019BU+P019AU**

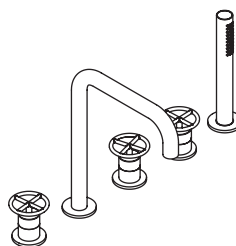
2 outlets



**P017BU+P017AU**

2 outlets

### 5-Hole Roman tub set



**P065U**

2 outlets

## TRADITIONAL CARTRIDGE

### Floor-mount single-control tub filler

*1/2" inlets*



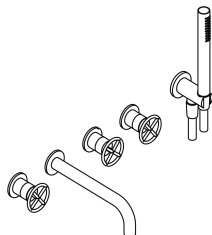
**P080BU+R080AU**

2 outlets

Built-in bathtub mixer

- 5" spout projection
- 2-way diverter with turning knob
- FIT handshower
- 58" vinyl hose
- Water plug with shower holder
- 1/2" inlets
- 10.35 gpm @ 60 psi

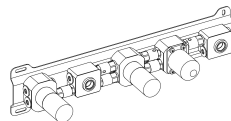
P019BU



Trim

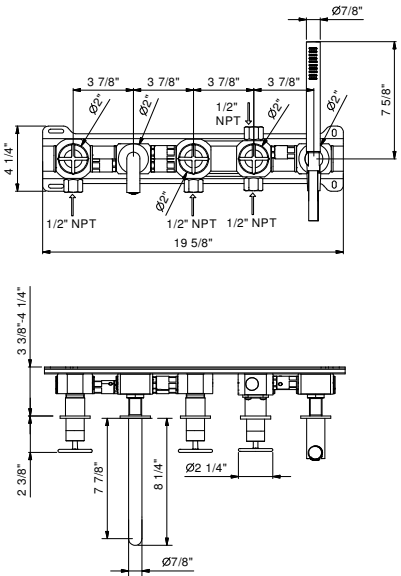
Matte Gun Metal PVD 47 P5 P019BU

P019AU



Rough

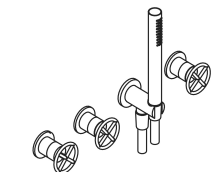
47 00 P019AU



Built-in bathtub mixer

- 2-way diverter with turning knob
- FIT handshower
- 58" vinyl hose
- Water plug with shower holder
- 1/2" inlets
- 10.80 gpm @ 60 psi

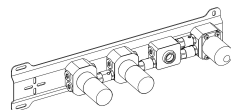
P017BU



Trim

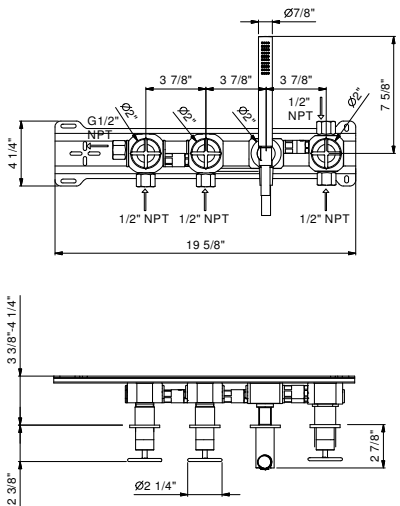
Matte Gun Metal PVD 47 P5 P017BU

P017AU



Rough

47 00 P017AU

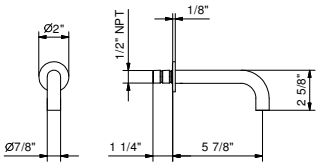




8453U

Wall-mount tub spout, 5 7/8" projection

- 1/2" NPT connection
- Max 6.5 gpm @ 60 psi
- Integrated aerator
- Round backplate



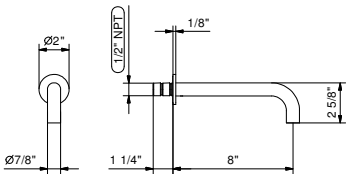
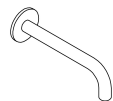
Matte Gun Metal PVD

47 P5 8453U

8454U

Wall-mount tub spout, 8" projection

- 1/2" NPT connection
- Max 6.5 gpm @ 60 psi
- Integrated aerator
- Round backplate



Matte Gun Metal PVD

47 P5 8454U



## FONTANE BIANCHE

SALVATORI

+



### **Fantini USA Inc.**

A&D BUILDING - 150 East 58th Street, 8th floor - New York, NY 10155

Ph. 212 308 8833 - Fax 212 308 8820

[www.fantiniusa.com](http://www.fantiniusa.com) - [fantini@fantiniusa.com](mailto:fantini@fantiniusa.com)