

AA/27

TECHNICAL MANUAL

ABOUTWATER

 **Boffi**  **FANTINI**
RUBINETTI

AA/27

design Michael Anastassiades



P5 Y004U

| | |
|-------------------------------|--------|
| WASHBASIN | p. 136 |
| BIDET | p. 138 |
| SHOWER | p. 139 |
| TUB | p. 149 |
| MISCELLANEOUS ARTICLES | p. 151 |

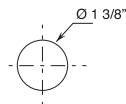
Technical information

All AA/27 articles are supplied **WITH HANDLES**.

Washbasin and bidet mixers are **restricted to 1.2 gpm**.

HOLE SIZE GUIDELINES:

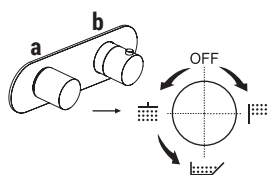
- Single-hole washbasin and bidet mixers.



The 3/4" thermostatic shower mixer is available with integrated volume controls in these versions:

- with one volume control (1 outlet) Y372BU + D331AU
- with 2-way diverter (2 outlets) Y372BU + D372AU
- with 3-way diverter (3 outlets) Y372BU + D373AU

Diverter **include volume control** and **do not allow to share functions**.



OPERATION EXAMPLE:

Y372BU + D373AU

a) **rotating diverter with volume control**: from the OFF position, the first function is activated by rotating the knob clockwise, volume increases progressively. The second and third are activated in sequence turning the handle counterclockwise.

b) **temperature control** with safety override button at 100° F.

Base materials:

STAINLESS STEEL AISI 316/316 L

Finish:

P5 Matte Gun Metal PVD

93 Brushed Stainless Steel



P5 - Matte Gun Metal PVD



93 - Brushed Stainless Steel



For more information on AA/27, check out the collection overview on our website.

* For spare parts, accessories, miscellaneous items and extensions please refer to the dedicated sections

TRADITIONAL CARTRIDGE

Single-control washbasin mixer*_3 7/8" spout projection***Y004WU**

WITHOUT DRAIN

Single-control vessel mixer*_4 1/2" spout projection***Y006WU**

WITHOUT DRAIN

Wall-mount washbasin mixer*_7 7/8" spout projection***Y011BU+Y011AU**

WITHOUT DRAIN

Wall-mount washbasin mixer*_7 7/8" spout projection***Y111BU+M011AU**

WITHOUT DRAIN

Single-control bidet mixer*_4 1/2" spout projection***Y008WU**

WITHOUT DRAIN

Y004WU

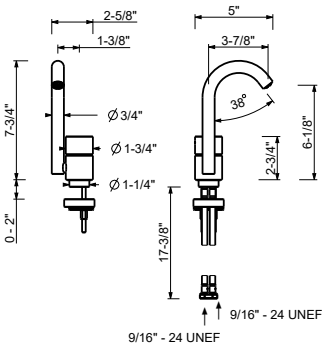


Single-control washbasin mixer

- 3 7/8" spout projection
- Water flow restricted to 1.2 gpm
- Flexible supply lines included

Drain not included, please select W095U or W097U in the Miscellaneous Articles section.

Matte Gun Metal PVD 33 P5 Y004WU
Brushed Stainless steel 33 93 Y004WU



Y006WU

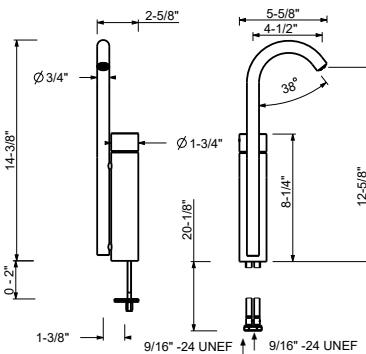


Single-control vessel mixer

- 4 1/2" projection
- Water flow restricted to 1.2 gpm
- Flexible supply lines included

Drain not included, please select W095U or W097U in the Miscellaneous Articles section.

Matte Gun Metal PVD 33 P5 Y006WU
Brushed Stainless steel 33 93 Y006WU



Wall-mount washbasin mixer

- 7 7/8" spout projection
- Water flow restricted to 1.2 gpm
- 1/2" inlets

Drain not included, please select W095U or W097U in the Miscellaneous Articles section.

Y011BU

Trim

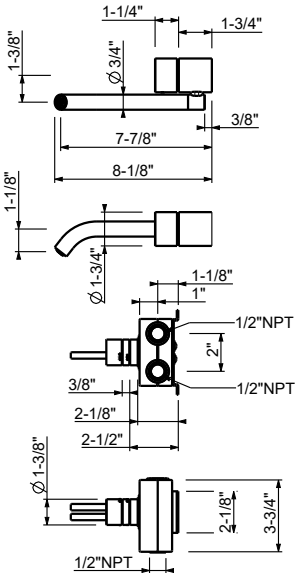
Matte Gun Metal PVD 33 P5 Y011BU
Brushed Stainless steel 33 93 Y011BU



Y011AU

Rough

44 00 Y011AU



AA/27

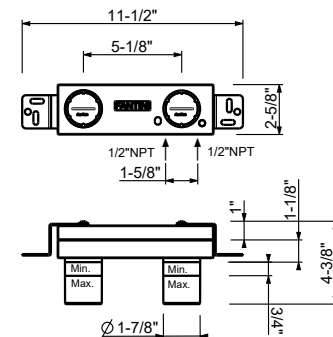
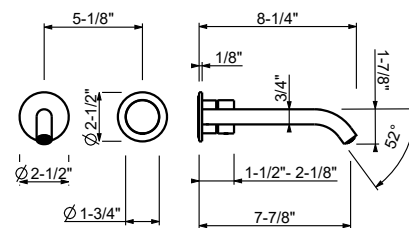
- 7 7/8" spout projection
- Water flow restricted to 1.2 gpm
- 1/2" inlets

Drain not included, please select W095U or W097U in the Miscellaneous Articles section.

Trim

| | |
|---------------------|--------------|
| Matte Gun Metal PVD | 33 P5 Y111BU |
|---------------------|--------------|

Brushed Stainless steel 33 93 Y111BU



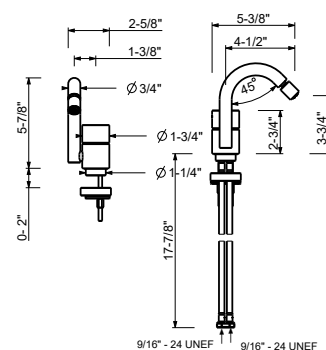
Rough

44 00 M011AU



- 4 1/2" spout projection
- Water flow restricted to 1.2 gpm
- Adjustable aerator
- Flexible supply lines included

Drain not included, please select W095U or W097U in the Miscellaneous Articles section.



Matte Gun Metal PVD 33 P5 Y008WU

Brushed Stainless steel 33 93 Y008WU

THERMOSTATIC CARTRIDGE

Built-in shower mixer
_3/4" inlets



Y372BU+D331AU
volume control
1 outlet



Y372BU+D372AU
diverter
2 outlets



Y372BU+D373AU
diverter
3 outlets



Y300BU+D400AU



Y391BU+D391AU
volume control
1 outlet



Y376BU+D376AU
diverter
2 outlets



Y376BU+D377AU
diverter
3 outlets

3/4" Thermostatic mixer with integrated volume control

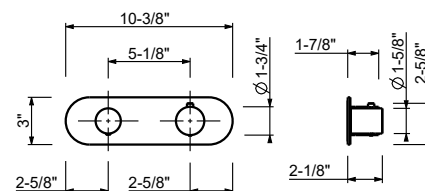
- Temperature control with safety override button at 100° F
- 3/4" NPT inlets, 1/2" outlet on rough
- Flow rate: 15.3 gpm @ 60 psi
- Anti-scald mechanism
- Watertight casing for added safety
- Accessible shut-off valves and filters
- For horizontal installation

Y372BU

Trim

Matte Gun Metal PVD 33 P5 Y372BU

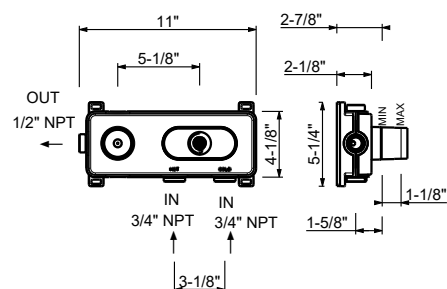
Brushed Stainless steel 33 93 Y372BU



D331AU

Rough

19 00 D331AU



3/4" Thermostatic mixer with 2-way diverter

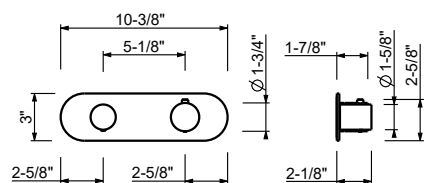
- Temperature control with safety override button at 100° F
- 3/4" NPT inlets, 1/2" outlets on rough
- Flow rate: 8.9 gpm @ 60 psi (primary outlet)
- Flow rate: 7.6 gpm @ 60 psi (secondary outlet)
- Anti-scald mechanism
- Watertight casing for added safety
- Accessible shut-off valves and filters
- For horizontal installation

Y372BU

Trim

Matte Gun Metal PVD 33 P5 Y372BU

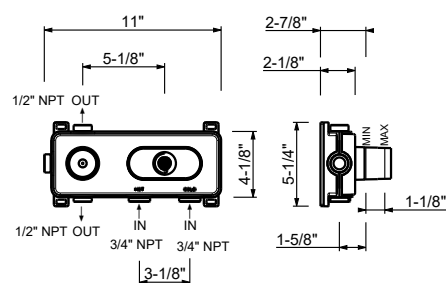
Brushed Stainless steel 33 93 Y372BU



D372AU

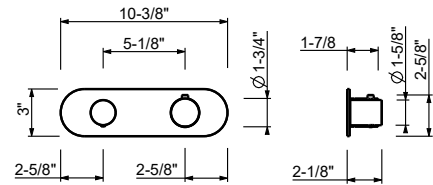
Rough

19 00 D372AU



3/4" Thermostatic mixer with 3-way diverter

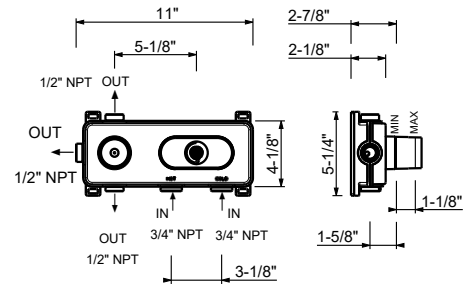
- Temperature control with safety override button at 100° F
- 3/4" NPT inlets, 1/2" outlets on rough
- Flow rate: 8.7 gpm @ 60 psi (primary outlet)
- Flow rate: 7.4 gpm @ 60 psi (secondary outlet)
- Flow rate: 7.4 gpm @ 60 psi (third outlet)
- Anti-scald mechanism
- Watertight casing for added safety
- Accessible shut-off valves and filters
- For horizontal installation

**Y372BU****Trim**

Matte Gun Metal PVD 33 P5 Y372BU

Brushed Stainless steel 33 93 Y372BU**D373AU****Rough**

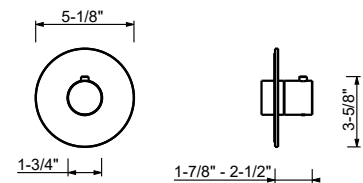
19 00 D373AU

**3/4" Thermostatic shower mixer without volume control**

- Temperature control with safety override button at 100° F
- 3/4" NPT inlets and outlet on rough
- Flow rate: 16.9 gpm @ 60 psi
- Anti-scald mechanism
- Watertight casing for added safety
- Accessible shut-off valves and filters
- Compatible with Easy Fix art. # W213U and W214U

To be used with volume control(s) or diverter(s):

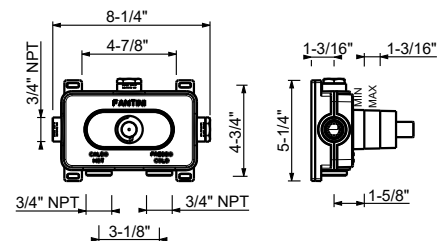
- volume control art. # Y391BU+D391AU
- 2-way diverter art. # Y376BU+D376AU
- 3-way diverter art. # Y376BU+D377AU

**Y300BU****Trim**

Matte Gun Metal PVD 33 P5 Y300BU

Brushed Stainless steel 33 93 Y300BU**D400AU****Rough**

19 00 D400AU



3/4" Volume control

- For remote installation
- 3/4" NPT inlets and outlets
- Separate outlet for additional volume controls
- Sound insulation foam back
- 15.3 gpm @ 60 psi

To be used with thermostatic mixer Y300BU+D400AU

Y391BU



Trim

Matte Gun Metal PVD 33 P5 Y391BU

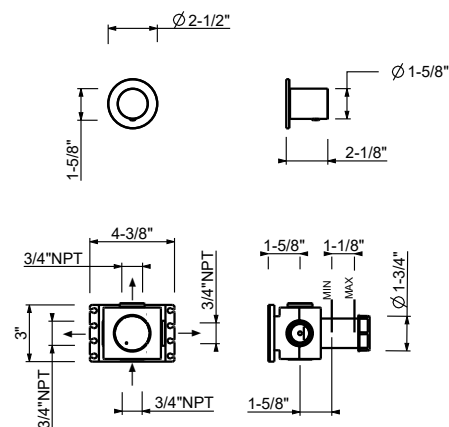
Brushed Stainless steel 33 93 Y391BU

D391AU



Rough

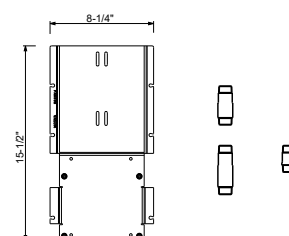
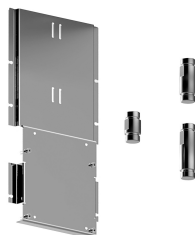
19 00 D391AU



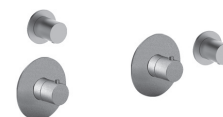
W213U

OPTIONAL - Easy Fix System

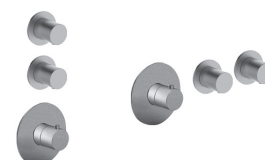
- Includes backplate and connections
- Suitable for vertical and horizontal installation
- **1 outlet:** D400AU + D391AU
- **2 outlets:** D400AU + (2) D391AU



EXAMPLE OF CONFIGURATION - 1 OUTLET



EXAMPLE OF CONFIGURATION - 2 OUTLETS

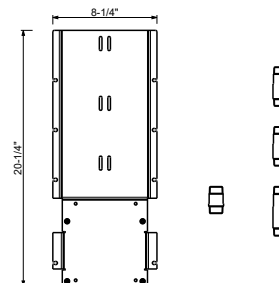


91 00 W213U

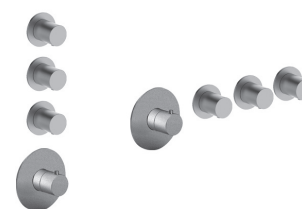
W214U

OPTIONAL - Easy Fix System

- Includes backplate and connections
- Suitable for vertical and horizontal installation
- **3 outlets:** D400AU + (3) D391AU



EXAMPLE OF CONFIGURATION - 3 OUTLETS



91 00 W214U

2-Way diverter with integrated volume control

- For remote installation
- 1/2" NPT inlets and outlets
- Accessible shut-off valves and filters
- Round backplate
- Flow rate: 8.9 gpm @ 60 psi (primary outlet)
- Flow rate: 7.6 gpm @ 60 psi (secondary outlet)

To be used with thermostatic mixer Y300BU+D400AU

Y376BU

Trim

Matte Gun Metal PVD 33 P5 Y376BU

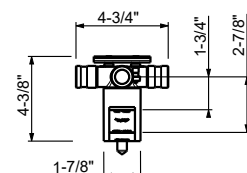
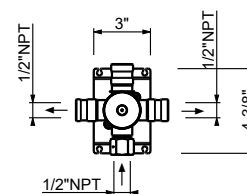
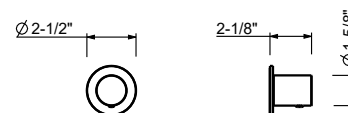
Brushed Stainless steel 33 93 Y376BU



D376AU

Rough

19 00 D376AU



3-Way diverter with integrated volume control

- For remote installation
- 1/2" NPT inlets and outlets
- Accessible shut-off valves and filters
- Round backplate
- Flow rate: 8.7 gpm @ 60 psi (primary outlet)
- Flow rate: 7.4 gpm @ 60 psi (secondary outlet)
- Flow rate: 7.4 gpm @ 60 psi (third outlet)

To be used with thermostatic mixer Y300BU+D400AU

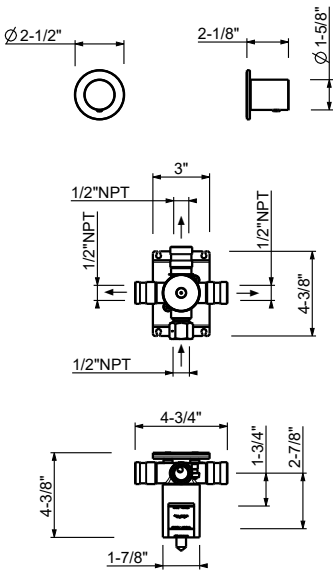
Y376BU

| Trim | | |
|-------------------------|--------------|--|
| Matte Gun Metal PVD | 33 P5 Y376BU | |
| Brushed Stainless steel | 33 93 Y376BU | |



D377AU

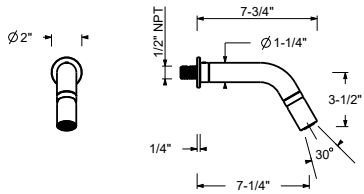
| Rough | | |
|-------|--------------|--|
| | 19 00 D377AU | |



8139U

Rain showerhead

- Stainless steel
- adjustable
- Wall-mount
- Flow restricted to 2.7 GPM
- 1/2" inlet
- Anti-limescale membrane

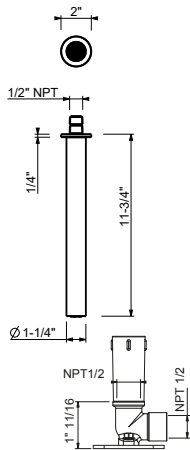


| | |
|-------------------------|-------------|
| Matte Gun Metal PVD | 81 P5 8139U |
| Brushed Stainless steel | 81 93 8139U |

8127U

Rain showerhead

- Stainless steel
- Ceiling-mount
- Flow restricted to 2.7 GPM
- 1/2" inlet
- Anti-limescale membrane



| | |
|-------------------------|-------------|
| Matte Gun Metal PVD | 81 P5 8127U |
| Brushed Stainless steel | 81 93 8127U |

OPTIONAL: Built-in part
W046U

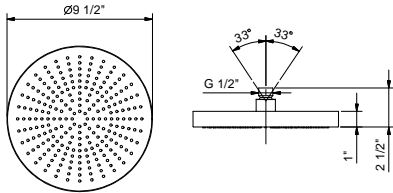
91 00 W046U



8053U

9 1/2" Round showerhead

- Stainless steel
- Anti-limescale membrane
- Water flow restricted to 2.5 gpm

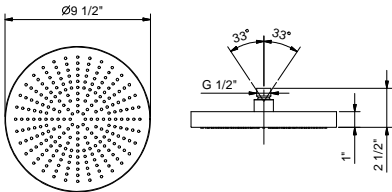


| | |
|-------------------------|-------------|
| Matte Gun Metal PVD | 81 P5 8053U |
| Brushed Stainless steel | 81 93 8053U |

8053UC

9 1/2" Round showerhead - Restricted to 1.8 gpm

- Stainless steel
- Anti-limescale membrane
- Water flow restricted to 1.8 gpm



Matte Gun Metal PVD 81 P5 8053UC

Brushed Stainless steel 81 93 8053UC

8080U

12" Wall-mount shower arm

- Round escutcheon
- Curved angle
- 1/2" NPT male connection
- Matching showerhead: #8053U, #8053UC

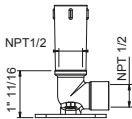
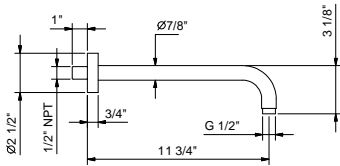


Matte Gun Metal PVD 81 P5 8080U

Brushed Stainless steel 81 93 8080U

OPTIONAL: Built-in part

W046U 91 00 W046U



8059U

18" Wall-mount shower arm

- Curved angle
- Round escutcheon
- 1/2" NPT male connection
- Matching showerhead: #8053U, #8053UC

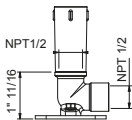
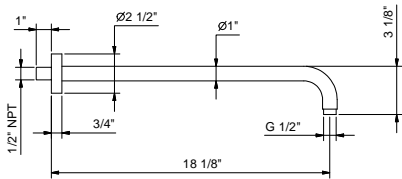


Matte Gun Metal PVD 81 P5 8059U

Brushed Stainless steel 81 93 8059U

OPTIONAL: Built-in part

W046U 91 00 W046U

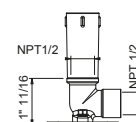
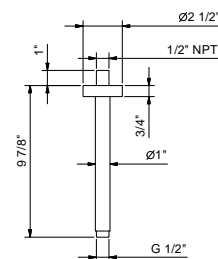


8058U**10" Ceiling-mount shower arm**

- Round escutcheon
- 1/2" NPT male connection
- Matching showerhead: #8053U, #8053UC



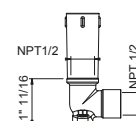
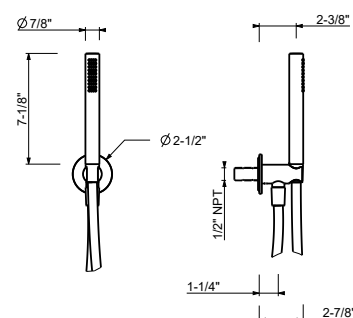
Matte Gun Metal PVD 81 P5 8058U

Brushed Stainless steel 81 93 8058U**OPTIONAL: Built-in part****W046U** 91 00 W046U**8125U****Wall-mount handshower set**

- Cylindrical handshower with anti-siphon check valve
- Anti-limescale membrane
- 58" PVC hose
- Water outlet with holder
- Round escutcheon
- 1/2" NPT male connection
- Water flow restricted to 1.8 gpm



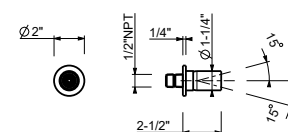
Matte Gun Metal PVD 81 P5 8125U

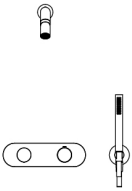
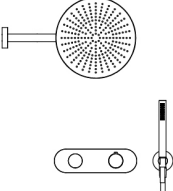
Brushed Stainless steel 81 93 8125U**OPTIONAL: Built-in part****W046U** 91 00 W046U**8128U****Wall-mount round adjustable body spray**

- Stainless steel
- adjustable
- 1/2" inlet
- Anti-limescale membrane



Matte Gun Metal PVD 81 P5 8128U

Brushed Stainless steel 81 93 8128U

| CONFIGURATION.1 | Art. | Description | Finish | |
|---|---------------|---|--------|-------------------------|
|  | 8125U | Wall-mount handshower set | P5 | Matte Gun Metal PVD |
| | Y372BU+D372AU | 3/4" Thermostatic mixer with 2-way diverter | 93 | Brushed Stainless steel |
| | 8139U | Rain showerhead | | |
| CONFIGURATION.2 | Art. | Description | Finish | |
|  | 8053U | 9 1/2" Round showerhead | P5 | Matte Gun Metal PVD |
| | Y372BU+D372AU | 3/4" Thermostatic mixer with 2-way diverter | 93 | Brushed Stainless steel |
| | 8080U | 12" Wall-mount shower arm | | |
| | 8125U | Wall-mount handshower set | | |

TRADITIONAL CARTRIDGE

Wall-mount tub filler*_1/2" inlets***Y120BU+R021AU**

2 outlets

**Y121BU+R021AU**

2 outlets

Deck-mount tub filler*_1/2" inlets***Y065U**

2 outlets

Floor-mount single-control tub filler*_1/2" inlets***Y080BU+Y080AU**

2 outlets

Wall-mount tub set

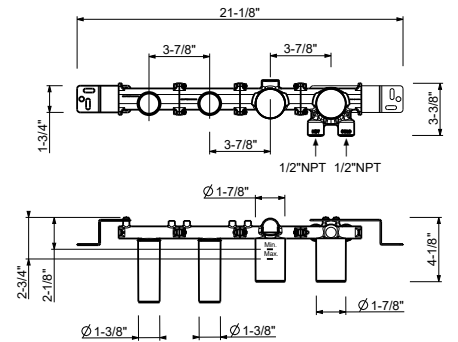
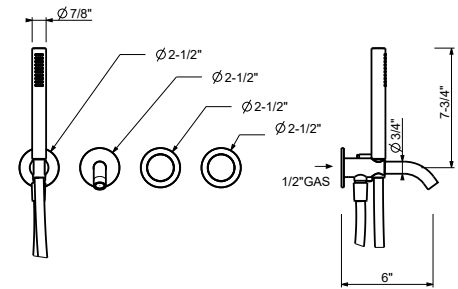
- 6" spout projection
- 2-way diverter with turning knob
- FIT handshower
- Water plug with shower holder
- 58" PVC hose
- 1/2" NPT inlet
- 5.8 gpm @ 60 psi

Y120BU**Trim**

Matte Gun Metal PVD 33 P5 Y120BU

Brushed Stainless steel 33 93 Y120BU**R021AU****Rough**

44 00 R021AU

**Wall-mount tub set**

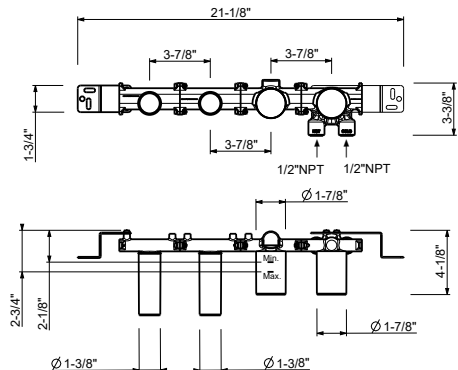
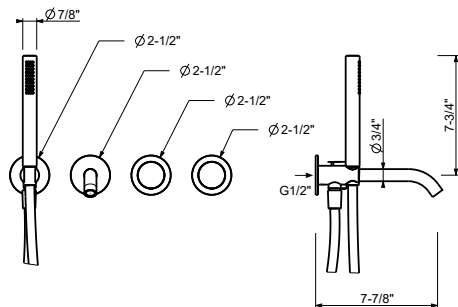
- 7 7/8" spout projection
- 2-way diverter with turning knob
- FIT handshower
- Water plug with shower holder
- 58" PVC hose
- 1/2" NPT inlet
- 5.8 gpm @ 60 psi

Y121BU**Trim**

Matte Gun Metal PVD 33 P5 Y121BU

Brushed Stainless steel 33 93 Y121BU**R021AU****Rough**

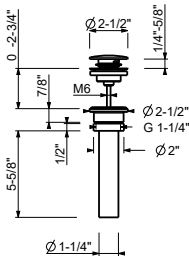
44 00 R021AU



W095U

1 1/4" Universal Push-up drain
• Compatible for installation on sinks with or without overflow

Complete list of available finishes in the Miscellaneous Articles section.

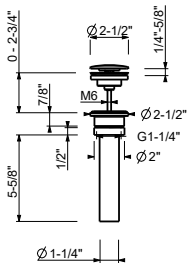


- Matte Gun Metal PVD91 P5 W095U
- Brushed Stainless steel91 93 W095U

W097U

1 1/4" Universal Free flow drain (always open)
• Compatible for installation on sinks with or without overflow

Complete list of available finishes in the Miscellaneous Articles section.

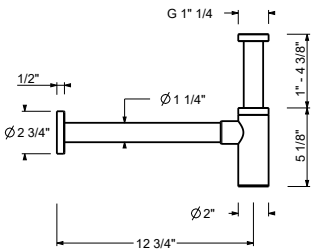


- Matte Gun Metal PVD91 P5 W097U
- Brushed Stainless steel91 93 W097U

9234

Bottle Trap
• for washbasin
• 1 1/4" inlet
• 1 1/4" outlet

Complete list of available finishes in the Miscellaneous Articles section.

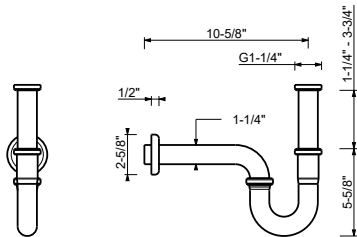


- Matte Gun Metal PVD91 P5 9234
- Brushed Stainless steel91 93 9234

W036U

P-trap
• for washbasin
• 1 1/4" inlet
• 1 1/4" outlet

Complete list of available finishes in the Miscellaneous Articles section.



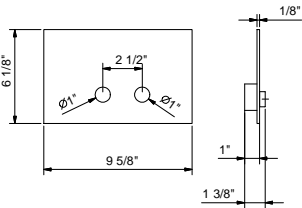
- Matte Gun Metal PVD91 P5 W036U
- Brushed Stainless steel91 93 W036U

8402U

- Flush actuator plate - Round buttons
- Stainless steel construction
 - Projecting push-button controls
 - Round push-button controls
 - Compatible with GEBERIT models: 111.798.00.1, 111.335.00.5



Complete list of available finishes in the Miscellaneous Articles section.



| | |
|-------------------------|-------------|
| Matte Gun Metal PVD | 91 P5 8402U |
| Brushed Stainless steel | 91 93 8402U |

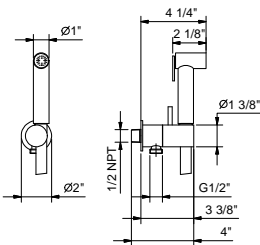
8486U

- Double-function hydrobrush
- For toilet cleaning
 - For personal care if used with a shower mixer
 - Water plug with shower holder
 - Stop valve
 - Round backplate
 - 47 1/4" Vinyl hose
 - 1/2" NPT male connection
 - 1.70 GPM @ 60 psi



Complete list of available finishes in the Miscellaneous Articles section.

Note: Use Brushed Nickel PVD to match with Brushed Stainless Steel



| | |
|---------------------|-------------|
| Brushed Nickel PVD | 91 92 8486U |
| Matte Gun Metal PVD | 91 P5 8486U |



Fantini USA Inc.

A&D BUILDING - 150 East 58th Street, 8th floor - New York, NY 10155

Ph. 212 308 8833 - Fax 212 308 8820

www.fantiniusa.com - fantini@fantiniusa.com