



ART. R017B+R017A

UP-Wannen- und Brausemischer

- Griffe
- ohne Auslauf
- Drehumsteller 2-Wege
- Handbrause ICONA
- Wandbogen mit Brausehalter
- Schlauch PVC 150 cm
- 90° Keramikventil
- 1/2" Eingänge

Datum

Project/Kommentar

AP-Teil

- | | |
|---|-------------|
| <input type="checkbox"/> Chrom | 53 02 R017B |
| <input type="checkbox"/> Schwarz matt | 53 13 R017B |
| <input type="checkbox"/> Polished Nickel PVD | 53 95 R017B |
| <input type="checkbox"/> Matt Gun Metal PVD | 53 P5 R017B |
| <input type="checkbox"/> Matt British Gold PVD | 53 P6 R017B |
| <input type="checkbox"/> Matt Copper PVD | 53 P9 R017B |
| <input type="checkbox"/> Deep Black PVD | 53 S1 R017B |
| <input type="checkbox"/> Mokka PVD | 53 S5 R017B |
| <input type="checkbox"/> Brushed Steel Look PVD | 53 92 R017B |
| <input type="checkbox"/> Pure Brass PVD | 53 Q7 R017B |
| <input type="checkbox"/> Raw Metal PVD | 53 Q8 R017B |

GESAMTPREIS

- | | |
|---|-------------|
| <input type="checkbox"/> Chrom | 53 02 R017B |
| <input type="checkbox"/> Schwarz matt | 53 13 R017B |
| <input type="checkbox"/> Polished Nickel PVD | 53 95 R017B |
| <input type="checkbox"/> Matt Gun Metal PVD | 53 P5 R017B |
| <input type="checkbox"/> Matt British Gold PVD | 53 P6 R017B |
| <input type="checkbox"/> Matt Copper PVD | 53 P9 R017B |
| <input type="checkbox"/> Deep Black PVD | 53 S1 R017B |
| <input type="checkbox"/> Mokka PVD | 53 S5 R017B |
| <input type="checkbox"/> Brushed Steel Look PVD | 53 92 R017B |
| <input type="checkbox"/> Pure Brass PVD | 53 Q7 R017B |
| <input type="checkbox"/> Raw Metal PVD | 53 Q8 R017B |

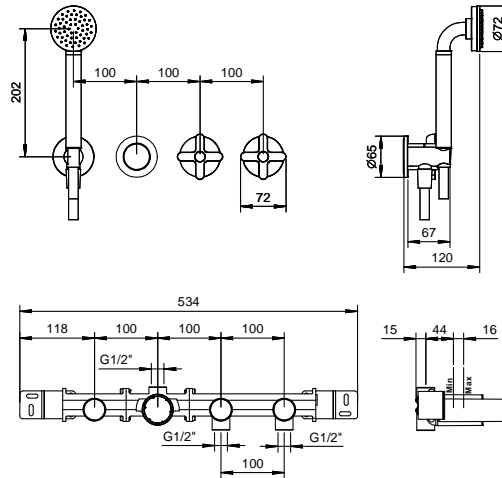
UP-Teil

- | | |
|--------------------------|-------------|
| <input type="checkbox"/> | 44 00 R017A |
|--------------------------|-------------|

ICONA CLASSIC

ART. R017B+R017A

UP-Wannen- und Brausemischer



• **Integrated aerator**

Wasserdruck(bar)	Durchfluss (l/min)
0.5	8.65
1	13.51
2	18.76
3	23.12
4	26.86

• **Handbrause**

Wasserdruck(bar)	Durchfluss (l/min)
0.5	4.05
1	5.79
2	7.83
3	8.64
4	8.25