



ART. G577B+D377A

1/2" 3-way built-in diverter

- CYLINDRICAL handle
- 3-way shut-off diverter with turning knob
- 1/2" inlet

Date

Project/Comments:

External piece

- | | |
|---|-------------|
| <input type="checkbox"/> Chrome | 87 02 G577B |
| <input type="checkbox"/> Matt Black | 87 13 G577B |
| <input type="checkbox"/> Matt Gun Metal PVD | 87 P5 G577B |
| <input type="checkbox"/> Matt British Gold PVD | 87 P6 G577B |
| <input type="checkbox"/> Deep Black PVD | 87 S1 G577B |
| <input type="checkbox"/> Mokka PVD | 87 S5 G577B |
| <input type="checkbox"/> Brushed Steel Look PVD | 87 92 G577B |

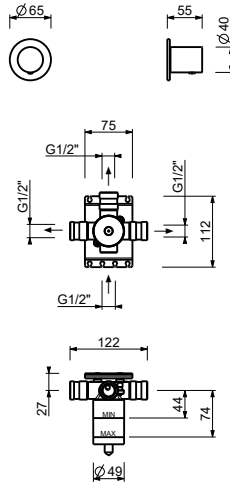
Built-in piece

- | | |
|--------------------------|-------------|
| <input type="checkbox"/> | 19 00 D377A |
|--------------------------|-------------|

TOTAL PRICE

- | | |
|---|-------------|
| <input type="checkbox"/> Chrome | 87 02 G577B |
| <input type="checkbox"/> Matt Black | 87 13 G577B |
| <input type="checkbox"/> Matt Gun Metal PVD | 87 P5 G577B |
| <input type="checkbox"/> Matt British Gold PVD | 87 P6 G577B |
| <input type="checkbox"/> Deep Black PVD | 87 S1 G577B |
| <input type="checkbox"/> Mokka PVD | 87 S5 G577B |
| <input type="checkbox"/> Brushed Steel Look PVD | 87 92 G577B |

ART. G577B+D377A
1/2" 3-way built-in diverter



Way number 1

Pressure(bar)	Flow rate (l/min)
0.5	8.86
1	12.53
2	17.57
3	21.63
4	25.02

Way number 2

Pressure(bar)	Flow rate (l/min)
0.5	7.91
1	11.03
2	15.47
3	19.01
4	21.98

Way number 3

Pressure(bar)	Flow rate (l/min)
0.5	7.6
1	10.79
2	15.43
3	18.87
4	21.91