



ART. G576BU+D376AU

2-Way diverter with integrated volume control

- For remote installation
- 1/2" NPT inlets and outlets
- Accessible shut-off valves and filters
- Flow rate: 8.9 gpm @ 60 psi (primary outlet)
- Flow rate: 7.6 gpm @ 60 psi (secondary outlet)

To be used with thermostatic mixer G500BU+D400AU

Date

Project/Comments:

Trim

- Chrome 87 02 G576BU
- Matte Black 87 13 G576BU
- Matte Gun Metal PVD 87 P5 G576BU
- Matte British Gold PVD 87 P6 G576BU
- Matte Copper PVD 87 P9 G576BU
- Deep Black PVD 87 S1 G576BU
- Pure Brass PVD 87 Q7 G576BU
- Raw Metal PVD 87 Q8 G576BU

- Brushed Stainless steel 87 93 G576BU

Rough

- 19 00 D376AU

TOTAL PRICE

- Chrome 87 02 G576BU
- Matte Black 87 13 G576BU
- Matte Gun Metal PVD 87 P5 G576BU
- Matte British Gold PVD 87 P6 G576BU
- Matte Copper PVD 87 P9 G576BU
- Deep Black PVD 87 S1 G576BU
- Pure Brass PVD 87 Q7 G576BU
- Raw Metal PVD 87 Q8 G576BU

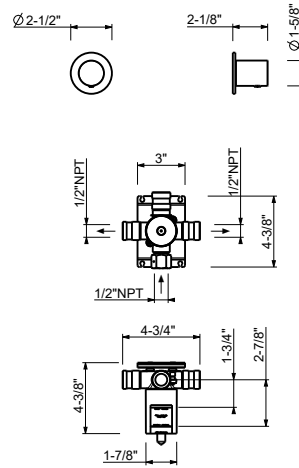
- Brushed Stainless steel 87 93 G576BU

NOSTROMO SMALL



ART. G576BU+D376AU

2-Way diverter with integrated volume control



Way number 1

Pressure(PSI)	Waterflow (GPM/min)
7.25	8.86
14.5	3.31
29	4.64
43.5	5.71
58	6.6

Way number 2

Pressure(PSI)	Waterflow (GPM/min)
7.25	2.08
14.5	2.91
29	4.08
43.5	5.02
58	5.8