

KIWI EXPERIENCE

**SMALL GROUPS, BIG ADVENTURES
AUTHENTIC NEW ZEALAND EXPERIENCES**

10 DAY TOUR

SOUTH ISLAND

▶ **Start Wellington** ▶ **Finish Christchurch**

Turquoise lakes, majestic glaciers, dramatic mountain peaks and the picture-perfect towns of Queenstown, Wanaka and Franz Josef. This tour is the ultimate South Island roadie visiting Kaikoura, Christchurch, Wanaka, Queenstown, Tekapo and back across to Christchurch via the famous Arthur's Pass.

**FROM
NZ \$1650**



On the night before your tour starts, accommodation is included at: Hotel Waterloo, Wellington. If you'd like, feel free to join us for a group welcome meeting at 6pm the night before the tour departure in the lobby.

DAY 1

Wellington ▶ **Kaikoura**

You'll kick off your trip experiencing what's regarded as one of the most beautiful inter-island crossings in the world, the Cook Strait (included). Arriving into the top of the South island we'll journey through the dreamy Marlborough region, home to more vineyards than your eyes can see. Stopping off for a tasting (or two...) along the way (included) to Kaikoura to spot unique marine life and experience local Kiwi cuisine.

ACCOMMODATION: Dusky Lodge or similar

Included Experiences:

- ▶ Inter-Island transport across the Cook Strait
- ▶ Wine tasting in the Marlborough region



DAY 2

Kaikoura ▶ Christchurch

Start the day with a sleep-in or for the more adventurous head out to sea to witness spectacular marine life such as dolphins, whales, albatrosses and so much more. (optional activity.) Around mid-morning we'll head up the Kaikoura Peninsula walkway to walk among a large seal colony (included). After a morning experiencing a real life Planet Earth episode we'll cruise to the diverse city of Christchurch where we will go on a walking tour of the city (included) to learn about the street art, see the blooming botanical gardens, and learn about the history of a city that's experienced so much in recent times.

ACCOMMODATION: YHA Christchurch or similar

Included Experiences:

- ▶ Kaikoura Seal colony
- ▶ Christchurch city street art trail



DAY 3

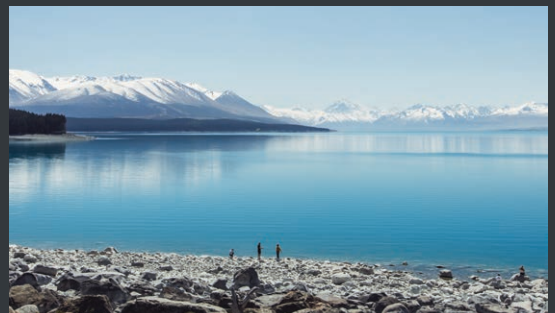
Christchurch ▶ Lake Tekapo

Saying goodbye to Christchurch we'll hit the road and cruise into the magnificent Mackenzie Country, home to Lake Tekapo. Here we will visit the charming stone Church of the Good Shepherd (included), sit next to the breathtakingly blue waters of the lake framed with colourful lupins. As night falls, we will visit the 'Dark Sky Project' situated amongst the UNESCO Dark Sky reserve (Included).

ACCOMMODATION: Lakefront Lodge Tekapo or similar

Included Experiences:

- ▶ Church of the Good Shepherd
- ▶ Dark Sky Project, Lake Tekapo



DAY 4

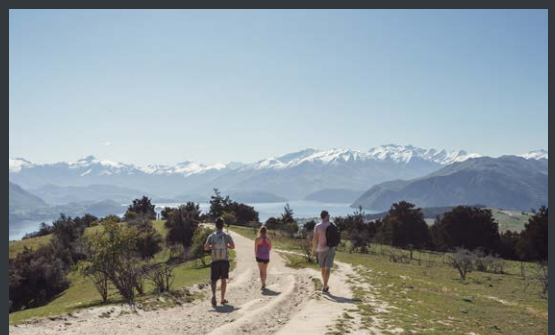
Tekapo ▶ Mt Cook ▶ Wanaka

Cruising past the 'powerade factory' Lake Pukaki (you'll know what we mean when you see it) we head for Mount Cook village where we will hike the Hooker Valley Walk (included) which has breath-taking views which will break your internet and blow your mind. Here you will have the opportunity to experience the Tasman Glacier by helicopter or take a scenic flight through the Aoraki National Park. From mid - morning, we will continue to cruise through the National Park, through the stunning Lindis Pass through to Wanaka.

ACCOMMODATION: YHA Wanaka or similar

Included Experiences:

- ▶ Hooker Valley Walkway
- ▶ Wanaka & Roys Peak hike shuttle



DAY 5

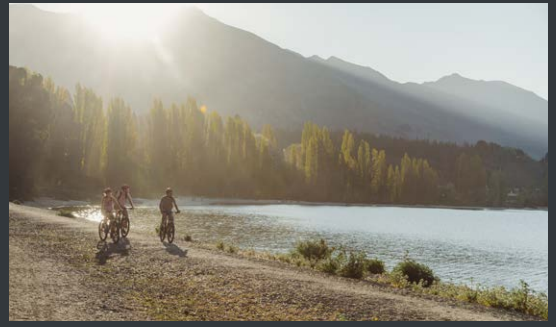
Wanaka ▶ Queenstown

Here in Wanaka, we will have the morning to hike the famous Roys Peak (included), snap 'That Wanaka tree' or climb Mount Iron (included). For the more daring in the group there's the option to experience a via ferrata 'Wild Wire' or hit up the lakeside trails on a mountain bike. Late afternoon, you can catch your breath in the back of the bus as we cruise through the Crown ranges and head for the adrenaline fuelled Queenstown. We'll end the day heading up the Gondola (included) for a tasty dinner at the 'Skyline' overlooking Queenstown.

ACCOMMODATION: Nomads Queenstown or similar

Included Experiences:

- ▶ Queenstown Skyline Gondola & dinner



DAY 6

Free day in Queenstown

Carrying on the adrenaline pumping theme, you have a full day to fill with activities that suit all budgets and appetites for adventure. Try your hand at activities such as white water rafting, bungy jumping, skydiving, jet-boating or paragliding... if you dream it, it probably exists here in Queenstown. Speak to your Guide who will be able to point you in the right direction.

ACCOMMODATION: Nomads Queenstown or similar



DAY 7

Free day in Queenstown

Today we will head out into the heartlands of Otago to the picturesque town of Glenorchy to experience a scenic landscape brimming with southern charm.

ACCOMMODATION: Nomads Queenstown or similar

Included Experiences:

- ▶ Glenorchy & Lake Wakatipu tour



DAY 8

Queenstown ▶ Franz Josef

Leaving bright and early we leave behind Queenstown and set off for Franz Josef. This is one of the most scenic drives of your tour. We'll cruise by the breath-taking Lake Hawea, past the aptly named 'Blue Pools' and visit the pounding Thunder Creek Falls before visiting Lake Matheson; a spot that makes a mockery of Instagram filters. We'll then arrive in Franz Josef where we'll retire to a wilderness hostel deep in the rainforest itself.

ACCOMMODATION: Rainforest Lodge or similar

Included Experiences:

- ▶ Scenic drive
- ▶ Visit the Thunder Creek Falls & Lake Matheson



DAY 9

Free day in Franz Josef

Today free day in Franz Josef where you have the opportunity to experience a Heli-Hike to the famous Glacier or you can explore this lush corner of New Zealand (for free) on foot and hit up the many trails in the area. For those wanting something a little more special to take home with them; passengers can head up the road to nearby Hokitika to carve their own greenstone necklace (pounamu).

ACCOMMODATION: Rainforest Lodge or similar

Included Experiences:

- ▶ Explore the glacial valleys of Franz Josef



DAY 10

Franz Josef ▶ Christchurch

On your final day we will cruise through the Arthur's Pass National Park, a landscape of two halves. On the eastern side you'll see wide, shingle-filled riverbeds and vast swathes of beech forest. Descend the western side and you venture through dense rainforest alongside and over deeply gorged rivers. Along this road we will stop off at the Devil's Punch Bowl and the breath-taking Castle Hill. (Included.) You tour will end in Christchurch, a small city with a big heart.

Included Experiences:

- ▶ Arthur's Pass National Park
- ▶ Devil's Punch Bowl, Castle Hill



10 DAY SOUTH ISLAND SCHEDULE 2019 / 2020



NOVEMBER	DECEMBER	JANUARY	FEBRUARY	MARCH	APRIL	MAY
4th November	2nd December	6th January	3rd February	2nd March	6th April	9th May
11th November	9th December	13th January	8th February	9th March	10th April	10th May
		17th January	10th February	16th March	13th April	
		20nd January	14th February	23rd March	17th April	
		27th January	17th February		20th April	
			24th February			

