

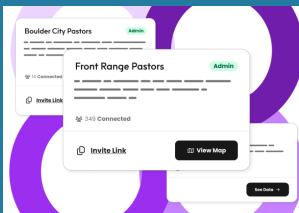
# STATE OF YOUR NETWORK

## GETTING STARTED

Seeing the State of Your Network has never been easier! Utilizing your free Gloo Network Account, you can:

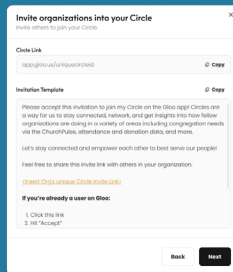
1

Create Your Circle



2

Invite Your Churches



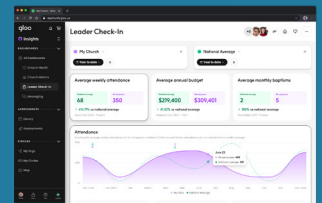
3

Encourage them to deploy the ChurchPulse Assessment using free messaging from Gloo



4

See your Network Health dashboard light up!



## What is the State of the Church?

**State of the Church 2025 is a year-long initiative** to help leaders in ministry understand current Church trends and utilize common measurements to see the flourishing of their own people and the thriving of their organization.

### What it includes:

- **Monthly research through 2025 about the State of the Church in America**
  - [Free previews on StateoftheChurch.com](https://www.stateofthechurch.com)
  - [Full reports at Barna Access Plus](#)
- **State of Your Church Kit**
  - **The ChurchPulse Assessment:** designed to measure the flourishing of people and the thriving of churches.
  - **A Church Health Dashboard:** to help leaders see the state of their church.
  - **Resources** to help leaders deploy the ChurchPulse Assessment.

## Monthly Research Releases

Each month, Barna will release What's Trending (research) and What's Working (stories about church leaders) in the Church today. Monthly research drops go live at [stateofthechurch.com](https://stateofthechurch.com), and [Barna Access Plus](#) subscribers see additional stats before the general public. Topics include: *What Christians Really Believe*, *Trends in Leadership*, *The Power of Community*, and more...

## What is the State of Your Church?

Church leaders can now measure and see the state of their church by using free tools in Gloo, including:

- The ChurchPulse assessment
- The State of Your Church kit to help leaders deploy
- The Church Health dashboard

These tools help churches leverage a common set of measurements: The 7 Dimensions of Human Flourishing, developed by Barna, Harvard Global Flourishing, and Gloo, and The 15 Dimensions of Church Thriving, developed by Barna.

## What is the ChurchPulse Assessment?

A 69-question assessment to help you measure how your people are *really* doing across the **7 Dimensions of Human Flourishing** and how your church is *really* doing across the **15 Dimensions of Church Thriving**.

### 7 Dimensions of FLOURISHING PEOPLE

*The 7 Dimensions of Human Flourishing are based on work from the Harvard Center for Human Flourishing and in collaboration with Barna and Gloo.*  
[Learn more about each of the dimensions.](#)

The first half of the assessment measures the 7 Dimensions of Human Flourishing. Human flourishing looks at areas of whole-life discipleship: **faith, relationships, finances, purpose, health, character, and contentment**. As people tell you how they are doing, you can get back to the heart of pastoral ministry, partnering with them in new ways.

With your results, you can tailor your church's vision, strategic planning, programming, and next steps to help your people "*flourish like a palm tree...*" (Psalm 92:12)

### 15 Dimensions of CHURCH THRIVING

*Common lag measures like attendance and budgets don't give leaders a clear picture of your church's health. Based on decades of research from the Barna Group, the 15 dimensions of church thriving help leaders assess the drivers of church health.* [Learn more about each of the dimensions.](#)

The 15 Dimensions of Church Thriving are broken into three subcategories that help leaders answer these questions:

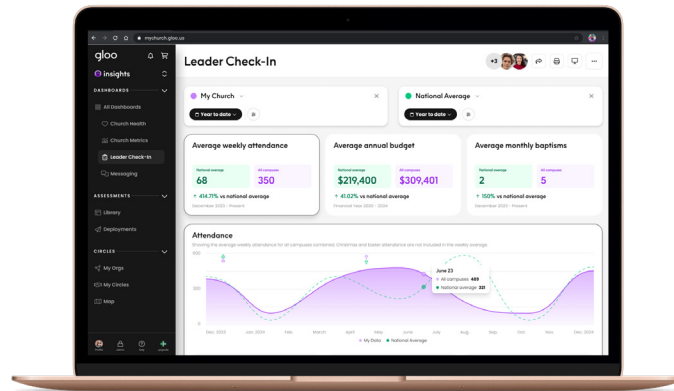
- **Nurturing:** How are we cultivating life within our congregation?
- **Sending:** How are we equipping people for ministry outside of our church?
- **Leading (Only asked of your leaders):** How are we strengthening our leadership culture and organizational operations?

# STATE OF **YOUR** NETWORK

## How do churches deploy the assessment?

The ChurchPulse is completely free and is easily deployed from your free Gloo account. Simply access **Insights > ChurchPulse > And “create deployment”**.

[Watch the Loom Video Overview](#)



## What is the Church Health Dashboard?

Incorporating the data from the ChurchPulse assessment, the Church Health Dashboard helps leaders see the State of their Church and go from insights-to-action with AI-powered next steps.

## Want to schedule a briefing for your network?

[Schedule my briefing](#)

# STATE OF YOUR NETWORK

## Frequently Asked Questions

### ***Are there resources to help me deploy The Church Kit?***

Yes! In the [State of the Church Hub](#), church leaders have access the **State of the Church Kit** to help them deploy the assessment at their church, and network leaders have access to the **State of Your Network Kit** to help them equip their churches to deploy the ChurchPulse and adopt the dimensions of Flourishing and Thriving.

### ***What if we run a survey in our church already?***

Supplement with the ChurchPulse!

In many cases, the ChurchPulse might already accomplish what a local or network survey is doing. In addition to assessing the flourishing of your people and the thriving of your church, there are a number of demographic questions to help you get a snapshot of the people that attend churches in your network.

All of this information combined helps to give a more accurate picture of the health of your network.

### ***Is the assessment anonymous?***

Yes!

The assessment allows for two configurations: 1) completely anonymous and 2) optional collection of name and phone number. In the 2nd case, the agency is left up to the respondent, and they always have the option to not share their personal information with the church.

Optionally, at the start of the assessment, congregants will be asked to verify their mobile phone number to save their progress and access to their unique dashboard. Beyond that, personal information is de-identified before it makes its way to your dashboard.

This ensures the trust between you and your congregation is protected and also leads to high completion rates and the most honest and accurate feedback to help you lead more confidently.

### ***Who can see the data?***

No one.

Personal information stays with the congregant (unless they opt-in to share with the church), and answers are de-identified to populate your dashboard.

### ***How much does this cost?***

Nothing!

The ChurchPulse assessment and everything that comes with it is free with your free Gloo account.