

All Jayco caravans utilise a flat plug manufactured to Australian Standard AS4177.5-2004.

The following instruction is to ensure adequate wire sizes are used to support van electrical requirements, minimising voltage drop and resistance in the circuits.

STANDARD (VIEW WITH LID OPEN)



Below is a table listing each pin, what circuit to connect to on the towing vehicle, and the minimum wire size to be used:

Pin#	Function	Colour	Min Wire Size (T)		Special Connection Instructions
			mm ²	AWG	
1	Left Indicator	Yellow	1.25	16	-
2	+12V Supply from Battery	Black	3.0	12	Connect directly to vehicle battery with a 30A fast acting fuse
3	Ground	White	3.0	12	Connect to vehicle chassis ground point. Do not connect to trailer harness ground wire. Do not connect directly to negative battery terminal
4	Right Indicator	Green	1.25	16	-
5	Electric Brakes	Blue	2.0	14	Connect to Electric Brake Controller
6	Stop Lamp	Red	1.25	16	-
7	Tail Lamps	Brown	1.25	16	-
8	Not Connected	-	-	-	-
9	Fridge +12V Supply (direct from battery)	Pink	10.0	8	Connect direct to vehicle battery positive terminal with a 30A fast acting fuse
10	Fridge Ground (direct from battery)	White	10.0	8	Connect directly to vehicle battery negative terminal or vehicle chassis ground point
11	Not Connected	-	-	-	-
12	Not Connected	-	-	-	-

(T) - mm² refers to the cross-sectional area of the copper in the wire.

Wire labelled as “6mm Auto” (for example) may not have 6mm² cross-sectional area.

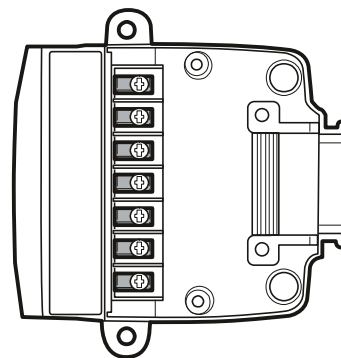


It is critical that the correct wire size is used for each wire, otherwise damage could occur to the vehicle and caravan wiring. Consult a qualified auto electrician if you are unsure.

STEP 1

Pins 1, 2, 4, 5, 6 & 7 will likely be connected through the towing vehicle's existing trailer wiring, and the wires can simply be removed from the existing vehicle trailer socket and housed in the correct pins on the supplied 12-pin socket.

Note: Consult your vehicle dealer or a qualified auto electrician if you are unsure.

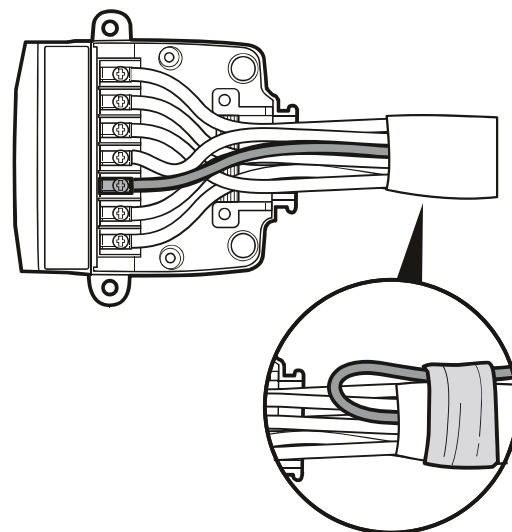


STEP 2

Pin 2 may be connected to the towing vehicle's reverse signal through the existing vehicle trailer wiring. If so, remove this wire from the existing vehicle trailer socket and tape it back. Then connect a new wire with a 30A fuse directly from the vehicle battery positive terminal to pin 2 on the supplied 12-pin socket (refer to table above for minimum wire size required)

Note: Do not connect Pin 2 to any other existing power circuit on the vehicle. This could cause damage to the vehicle wiring. Consult your vehicle dealer or a qualified auto electrician if you are unsure.

Note: A fast acting 30A fuse must be used and mounted as close to the battery as possible.

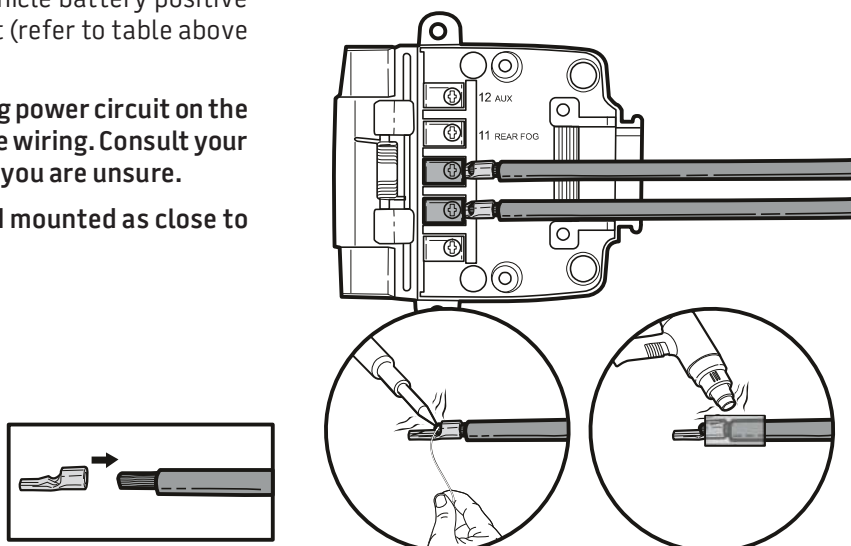


STEP 3

Pin 2 may be connected to the towing vehicle's reverse signal through the existing vehicle trailer wiring. If so, remove this wire from the existing vehicle trailer socket and tape it back. Then connect a new wire with a 30A fuse directly from the vehicle battery positive terminal to pin 2 on the supplied 12-pin socket (refer to table above for minimum wire size required)

Note: Do not connect Pin 2 to any other existing power circuit on the vehicle. This could cause damage to the vehicle wiring. Consult your vehicle dealer or a qualified auto electrician if you are unsure.

Note: A fast acting 30A fuse must be used and mounted as close to the battery as possible.



STEP 4

- It is recommended that a voltage-sensing battery isolator relay is also installed in series with both the fridge +12V battery supply on Pin 9 and the standard 12V supply on Pin 2 in order to prevent the caravan from draining the towing vehicle battery. Both circuits can be connected to the battery through the same isolator relay as long as it is rated to at least 60A. The relay should be fitted and connected as close to the vehicle battery as possible – refer to the relay manufacturer instructions for exact installation requirements.
- **Note: Consult your vehicle dealer or a qualified auto electrician if you are unsure.**

STEP 5

- Connect the caravan to the towing vehicle.
- Test all caravan lamps and other electrical devices for correct operation.