

# HINO

## 700 Series



### 8 x 4 Cab Chassis

\*Illustration may contain items not standard to the model

## KEY FEATURES

Pre-Collision System (PCS) including AEB & PD  
 Vehicle Stability Control (VSC)  
 Lane Departure Warning System (LDWS)  
 Adaptive Cruise Control  
 Engine retarder (Jake) brake  
 Reverse camera  
 ISRI 6860/870 NTS2 with integrated safety belt  
 ADR 80/04 Emission level using Euro 6 Standard  
 LED Main beam Headlamps with Daytime running Lamps (DRL)  
 Polished Alcoa wheels  
 Differential Cross Locks  
 Driver Monitor (DM)  
 Hino Connect Telematics  
 Load share twin steer

## KEY SPECIFICATIONS

<b>GVM</b> . . . . .	30,000kg
<b>GCM</b> . . . . .	42,500kg
<b>Power</b> . . . . .	360hp/265kW
<b>Torque</b> . . . . .	1,569Nm
<b>Transmission Options</b> . . . . .	Allison 6 spd Automatic Hino 12 spd AMT
<b>Wheelbases</b> . . . . .	5.9m
<b>Max Nominal Body Length</b> . . . . .	8.7m

## ENGINE

Engine model	Hino A09C-VN
Max.output (ISO Net) @ 1,800 rpm	360hp/265kW
Max.torque (ISO Net) @ 1,100 to 1,600 rpm	1,569Nm
Max. engine rpm	2,100
Engine compliance	ADR 80/04 using Euro 6 Standard
Type	Diesel, turbo & intercooled, 6 cylinder, OHC
Combustion system	Direct injection
Bore & stroke	112 x 150 mm
Piston displacement	8.866L
Fuel injection system	Electric control common rail
Air cleaner & intake	Behind cab mounted with paper element
Exhaust system	Horizontal outlet
Emission control systems	DOC,DPR & SCR after treatments
Engine immobiliser	Equipped

## TRANSMISSION & GEAR RATIOS

Make, model & Description	Allison 4440 6-spd Automatic		Hino M112 12-spd AMT			
Shifter type	Touch pad controller		Rotary switch with Sequential shifter			
GEAR RATIOS	1	4.696	1	10.127	7	2.507
	2	2.213	2	8.054	8	1.994
	3	1.529	3	6.414	9	1.588
	4	1.000	4	5.101	10	1.263
	5	0.764	5	4.038	11	1.000
	6	0.672	6	3.211	12	0.795
	Reverse	5.552	R1	9.902	R2	7.875
Torque Convertor Ratio	1.9					
Rear axle ratio	5.428		3.900			

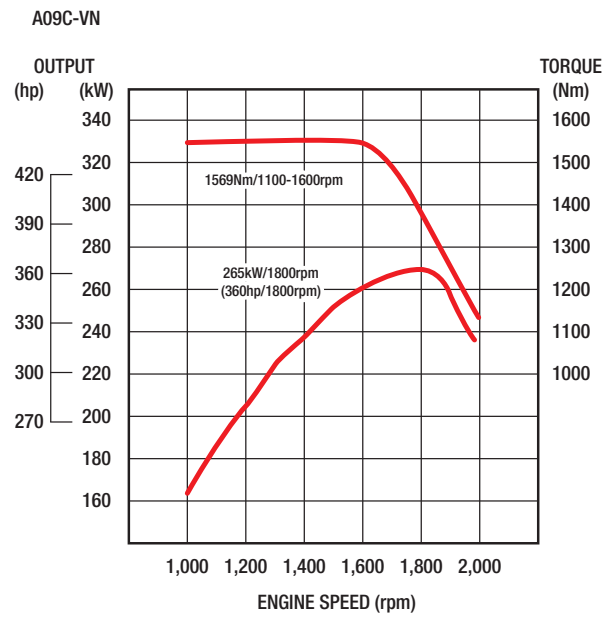
## PERFORMANCE

Calculations based on 11R22.5 drive tyres @ 30 t GVM		
Transmission Type	Automatic	AMT
Engine RPM @ 100 km/h	1,903	1,628
Road Speed limited to	100 km/h	
Max theoretical speed km/h	110	129
Theoretical gradeability % @ GVM	49%	40.5

## BRAKES

Type	Full Air, Taper Roller, Drum	
Control	Electronic Brake System (EBS)	
Drum area dimensions Diameter x width	Front	406.4 x 152 mm
	Rear	406.4 x 216 mm
Park brake	Spring brake acting on the drive axles	
Engine retarder (Jake) Brake	Equipped	
Exhaust Brake	Equipped	
Brake Sync	Brake pedal activated Engine brake	

## POWER & TORQUE CHART (ISO NET) A09C-VN



## SAFETY FEATURES

<b>Active Safety Features – Hino SmartSafe</b>		
Vehicle Stability Control	VSC	Equipped
Anti-lock Brake System	ABS	Equipped
Pre-Collision System	PCS	Equipped
PCS is inclusive of	Autonomous Emergency Braking	AEB
	Pedestrian Detection	PD
Adaptive Cruise Control	ACC	Equipped
Anti-Slip Regulator	ASR	Equipped
Lane Departure Warning System	LDWS	Equipped
Reverse buzzer & camera	RC	Equipped
Driver Monitor	DM	Equipped
Daytime Running Lamps	DRL	Equipped
Safety Eye	SE	Equipped
<b>Passive Safety Features</b>		
ECE-R29 Cab Strength Certification		Equipped
SRS airbag for driver		Equipped
SRS seatbelt pretensioner for driver		Equipped
Shock absorbing & collapsible steering column		Equipped
Front Underrun Protection (FUP)		Equipped

## AXLE, SUSPENSION & LOAD LIMITS

FRONT	Front Axle Model & Type	MF 781R Reverse Elliot I-beam x 2	
	Suspension	Taper Leaf Spring, shock absorbers, Stabiliser bar & load share	
	Axle Limit (incl suspension)	15,000 kg	
	Tyre limit	13,800 kg	
REAR	Rear Axle Model & Type	THD 17 Tandem drive axle	
	Inter axle differential lock	Equipped	
	Differential Cross Lock	Front Rear & Rear Rear	
	Model	FY3036 LEAF	FY3036 AIR
	Suspension	Hino 6 Rod with Taper leaf springs	Hendrickson HAS with ECAS & Road Friendly Suspension Certified
	Axle Limit (incl suspension)	21,800 kg	21,000 kg
Tyre Limit	21,800 kg		

## CHASSIS FRAME

Type	Ladder-shaped channel section side rails
Depth, Flange, Thickness	302 x 80 x 9.0 mm
Chassis width (at rear)	840 mm
Tensile strength	620 N/mm <sup>2</sup>
Front Underrun Protection (FUP)	Equipped
Front tow hook	Equipped

## WHEELS & TYRES

Wheel type	10-Stud disc wheel (ISO type) PCD 335 mm	
Rim type & size	Polished Alcoa 22.5" x 8.25"	
Tyre size	Front and Spare	295/80R22.5
	Rear	11R22.5
Number of wheels and tyres	Thirteen (13) including spare	
Spare tyre	Temporary Mounted	

## FUEL TANK & SUPPLY

Diesel tank type & capacity	Aluminium 390 Lts
Diesel tank lockable fuel cap	Equipped
Diesel fuel filtration	Primary, secondary & sedimenter
AdBlue® Tank Capacity	28 Lts

## ELECTRICAL

Type	24 volt negative earth system
Batteries	12 volt x 120 AH 115F51 x 2
Alternator capacity	90 amp
Starter type	24v – 6.0kW
Main Beam Headlamps (LED)	Equipped
Daytime Running Lamps (LED)	Equipped
Cornering Lamps	Equipped
Electric operated air horn	Equipped
Reverse buzzer & camera	Equipped
12 Volt 120W power socket	Equipped
USB 2.1A charging port	Equipped

## STEERING

Type	Telescopic and Tilt adjustable steering column, recirculating ball integral power steering		
Steering Angles	First Axle	Inside 39°	Outside 30°
	Second Axle	Inside 31°	Outside 25°

## GENUINE ACCESSORY OPTIONS

Bullbar	Rubber floor mats
Chrome wheel covers	Seat covers (Wool, Canvas, Carbon)
Cameras (up to additional 5 extra)	Stone guard
DVR	Sunvisor
Dash mat	Truck spec GPS nav with live traffic
Foot well Liners	Weathershields
Lane Change kit	Engine driven PTO 1:1 ratio

Please check with your dealer for availability, price & fitment

## CAB EXTERIOR

Type	Forward control, all steel, welded construction, Fully floating air suspended with electro hydraulic power tilt
ECE R29 Cab Strength	Certified
Windscreen wipers washers	Triple wet wiper arms
Grille Colour	Chrome
Outside rearview mirrors	2 Flat type main, heated & electric control
	2 convex spotter type, mounted below the main LHS kerb view & front kerb view mirrors
Windscreen Glass	Heat absorbing laminated glass

## CAB INTERIOR

Seating Capacity	Two (2)	
Driver's seat	ISRI 6860/870 NTS2 with integrated safety belt	
Assistant's Seat	Fixed High-back, reclining	
Seat Covering	Fabric cover	
Seat belts	Driver's seat	3-point Lap/Sash type with ELR
	Assistant's seat	
SRS airbag and pre-tensioner	Driver side	
Sun visor & overhead consoles	Driver & side passenger	
Sleeper berth	ADR 42 Capable	
Multimedia unit	10.1" UXGA capacity touch screen, wireless Apple CarPlay and Android auto compatible, AM/FM+RDS/DAB + radio, Bluetooth 5.0 phone and audio, input for up to 6 cameras, USB 2.0 and 3.0, 2.4 Ghz Wi-Fi enabled	
Automatic climate control	Equipped	
Central & remote door locking	Equipped with Immobiliser	
Cruise control	Equipped	
Power windows	Equipped	
Drivers footrest	Equipped	
Driver's seat back pocket	Equipped	
Centre document tray	Equipped	
Cup holders	Within centre tray & door pockets	
Tool kit & Jack	Equipped	
LED courtesy & reading lights	Equipped	

## INSTRUMENTATION & CONTROLS

<b>Multi Information Display (MID)</b>	<b>Meters &amp; Gauges</b>
Safety feature settings	Speedometer
General information settings	Tachometer
Eco driving	Air Pressure gauges x 2
DPR filter gauge	<b>Dash mounted switches</b>
<b>LCD Display</b>	Climate controls
Date & Time	LDWS off
Battery warning	PCS off
Drivers seatbelt warning	VSC off
Coolant	Headlight leveller
Fuel & AdBlue® gauge	Hazard lights
ODO, trip & hour meters	DPR manual regeneration
<b>Steering wheel &amp; Column controls</b>	Heated mirrors
MID setting	Idle up
Cruise control settings	Powered mirror control
Hands free phone	Inter axle & Differential Cross Locks
Lights & Indicator	Brake Sync
Engine brake & wiper washer	

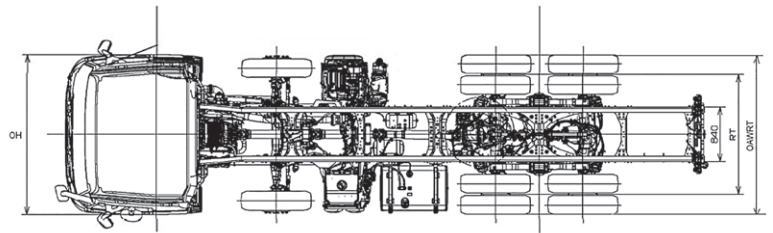
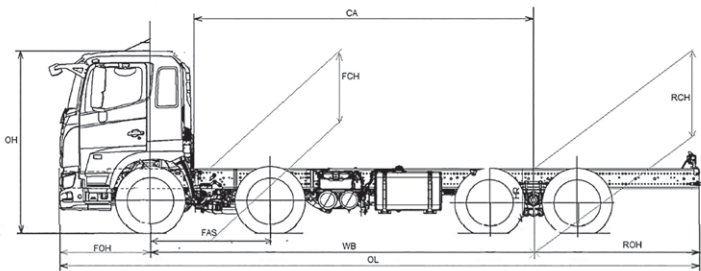
# FY 3036

# 700 Series



## DIMENSIONS – MM/WEIGHTS – KG

Model Description	FY 3036 AT LEAF 5925	FY 3036 AMT LEAF 5925	FY 3036 AMT AIR 5938
Product Code	FY1AUKA-FXCPENC	FY1AUKA-FRCPENC	FY1AUKH-FRCPENC
Max Nom Body length ((WBx0.6)+CA-80)	8,730		
Wheelbase (WB) (first axle to centre of rear axles)	5,925		5,938
Front axle spread (FAS)	1,855		
Overall length (OL)	9,895		
Cab Width (CW)	2,490		
Over All Width Rear Tyres (OAWRT)	2,465		
Overall height (OH)	2,895		2,900
Cab to rear Axle centre (CA)	5,255		5,270
Front Overhang (FOH)	1,410		
Rear Overhang (ROH)	2,560		2,548
Front Chassis Height (FCH)	1,055		1,060
Rear Chassis Height (RCH)	1,070		1,055
Road Clearance	245		
Front Track (FT)	2,070		
Rear Track (RT)	1,875		
Turning Circle	295/80R22.5	Kerb to Kerb	23,400
	Steer Tyres	Wall to Wall	25,200
Indicative chassis mass—kg (STD tools, 10 litres of fuel, spare tyre & subject to a +/- 3% tolerance)			
Total	8,999	8,903	8,707
Front	5,938	5,848	5,798
Rear	3,061	3,055	2,909
Standard Ratings	GVM	30,000	
	GCM	42,500	



Drawings are for reference only to the table. For specific layouts please refer to the Body Mounting Manual drawings.

## WARRANTY

New vehicle warranty period

Heavy Duty Model	Standard warranty (whichever comes first)	Engine component warranty (whichever comes first)
700 FY 3036	5 years or 600,000km	60 months or 750,000km

Battery warranty – 12 months from date of delivery

\* For conditions, refer to the Hino Parts & Service warranty brochure

Genuine parts or accessories warranty – 3 years unlimited kilometres when fitted by an authorised Hino dealer \*



## DISCLAIMER

Important notice. Hino Trucks are distributed in Australia by Hino Motor Sales Australia Pty Ltd A.C.N. 064 989 724. All efforts have been made to ensure the information contained in this brochure was correct at time of printing or uploading. Hino Motor Sales Australia Pty Ltd reserves the right to alter any details of the specifications & equipment without notice. Hino in so far as it is permitted by law to do so, shall not be liable in any way as a result of any reliance placed by any person on anything contained in this brochure. You should therefore check with your authorised Hino dealer at the time of ordering your motor vehicle to ensure that colour, specifications, equipment, design features & options are available for the vehicle you are ordering. Please note that some options may only be available in combination with others. Authorised Hino dealers will on request provide up to date information on all accessories, design features, prices & availability.