

tri pointe[®] HOMES

COMMUNITY ►

SITEPLAN ►

FLOORPLANS ►

INCLUDED FEATURES ►



Life-changing by Design

Northpark Lofts | 240.689.3324

Northpark Lofts

A loft that elevates expectations, The Bellamy blends two living levels with quiet luxury and effortless style. Designed for your life, it offers spaces to live, work, dine, and unwind. The Great Room flows seamlessly to the Kitchen, Dining Room, and Pocket Office, while a covered terrace extends your living space outdoors. Upstairs, the Primary Suite pampers with dual walk-in closets and sinks, offering a serene retreat. Two additional bedrooms add flexibility for family, guests, or hobbies. The Bellamy is where functionality and individuality come together—perfectly shaped for your life.

Highlighted Included Features

- ▶ Up to 2,550 Sq. Ft.
- ▶ Outdoor Living
- ▶ One Block to Pike & Rose
- ▶ Four Blocks to North Bethesda Metro Station
- ▶ Easy Access to I-270, I-495, Rockville Pike (MD-355), & Old Georgetown Road (MD-187)

Randy Lee

NEW HOME ADVISOR

E Randy.Lee@TriPointeHomes.com

P 240.375.8692

W TriPointeHomes.com

Tini Perkins

NEW HOME ADVISOR

E Tini.Perkins@TriPointeHomes.com

M 240.457.7620

W TriPointeHomes.com





The prices of our homes, included features, plans, specifications, promotions/incentives, neighborhood build-out and available locations are subject to change without notice. Stated dimensions, square footage and acreage are approximate and should not be used as a representation of any home's or homesite's precise or actual size, location or orientation. There is no guarantee that any particular homesite or home will be available. No information or material herein is to be construed to be an offer or solicitation for sale. A Broker/Agent must register their client in person on client's first visit at each community for a Broker/Agent to receive a commission or referral fee, if available. Not all features and options are available in all homes. Unless otherwise expressly stated, homes do not come with hardscape, landscape, or other decorator items. Any photographs or renderings used herein reflect artists' conceptions and are for illustrative purposes only. Community maps, illustrations, plans and/or amenities reflect our current vision and are subject to change without notice. Maps not to scale. Photographs or renderings of people do not depict or indicate any preference regarding race, religion, gender, sexual orientation, disability, familial status, or national origin. Some amenities may not yet be constructed. Builder reserves the right to change the size, design, configuration and location of amenities not yet constructed and does not warrant the suitability thereof for any use or for any person. There is no guarantee that any particular homesite, home or common area will offer a view or that any particular view will be preserved. Views may also be altered by subsequent development, construction, and landscaping growth. A link to a third party website does not imply endorsement of that site nor any ability to control that site's privacy practices. Marketing promotions/incentives, if any, are subject to conditions or restrictions and are subject to change without notice. No warranty or guarantee is made regarding any particular area public school/school district or that any particular public school/school district will service any given community. Schools/school districts may change over time. Builder does not warrant the suitability of any trail for any use or for any person. Our name and the logos contained herein are registered trademarks of Tri Pointe Homes, Inc. and/or its subsidiaries. © 2023 Tri Pointe Homes, Inc. All rights reserved. For State Licensing and Notices, see <https://www.tripointehomes.com/statelicensenotices>.

Homes in this community are located near an airport and subject to aircraft overflights and noise due to aircraft. Contact Loudoun County Government to verify whether your home is located within the Airport Impact Overlay District and the regulations that apply.



Northpark Lofts

SITE MAP



***DISCLAIMER:** It has been determined that due to its location within the Community, this home will be impacted by transportation noise from the adjacent roadway. Special measures will be taken during the construction of the home, such as installation of higher Sound Transmission Class (STC)-rated windows and doors and/or resilient channels (as may be required) to mitigate transportation noise impacts consistent with the Montgomery County recommended interior noise goal.



Life-changing by Design

tri pointe[®]
HOMES

The prices of our homes, included features, plans, specifications, promotions/incentives, neighborhood build-out and available locations are subject to change without notice. Stated dimensions, square footage and acreage are approximate and should not be used as a representation of any home's or homesite's precise or actual size, location or orientation. There is no guarantee that any particular homesite or home will be available. No information or material herein is to be construed to be an offer or solicitation for sale. A Broker/Agent must register their client in person on client's first visit at each community for a Broker/Agent to receive a commission or referral fee, if available. Not all features and options are available in all homes. Unless otherwise expressly stated, homes do not come with hardscape, landscape, or other decorator items. Any photographs or renderings used herein reflect artists' conceptions and are for illustrative purposes only. Community maps, illustrations, plans and/or amenities reflect our current vision and are subject to change without notice. Maps not to scale. Photographs or renderings of people do not depict or indicate any preference regarding race, religion, gender, sexual orientation, disability, familial status, or national origin. Some amenities may not yet be constructed. Builder reserves the right to change the size, design, configuration and location of amenities not yet constructed and does not warrant the suitability thereof for any use or for any person. There is no guarantee that any particular homesite, home or common area will offer a view or that any particular view will be preserved. Views may also be altered by subsequent development, construction, and landscaping growth. A link to a third party website does not imply endorsement of that site nor any ability to control that site's privacy practices. Marketing promotions/incentives, if any, are subject to conditions or restrictions and are subject to change without notice. No warranty or guarantee is made regarding any particular area public school/school district or that any particular public school/school district will service any given community. Schools/school districts may change over time. Builder does not warrant the suitability of any trail for any use or for any person. Our name and the logos contained herein are registered trademarks of Tri Pointe Homes, Inc. and/or its subsidiaries. © 2023 Tri Pointe Homes, Inc. All rights reserved. For State Licensing and Notices, see <https://www.tripointehomes.com/statelicensenotices>. 08/2023



Homes in this community are located near an airport and subject to aircraft overflights and noise due to aircraft. Contact Loudoun County Government to verify whether your home is located within the Airport Impact Overlay District and the regulations that apply.

Northpark Bellamy Home Design

Up to 2,550 Sq Ft | 3 Bedrooms | 2.5 Bathrooms | 1 Bay Garage

Life-changing by Design



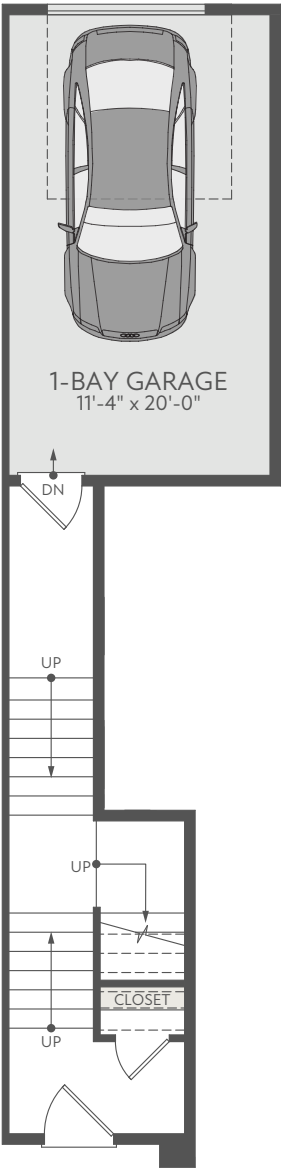
Bellamy Home Design

Up to 2,550 Sq Ft | 3 Bedrooms | 2.5 Bathrooms | 1 Bay Garage



Bellamy Lower Level

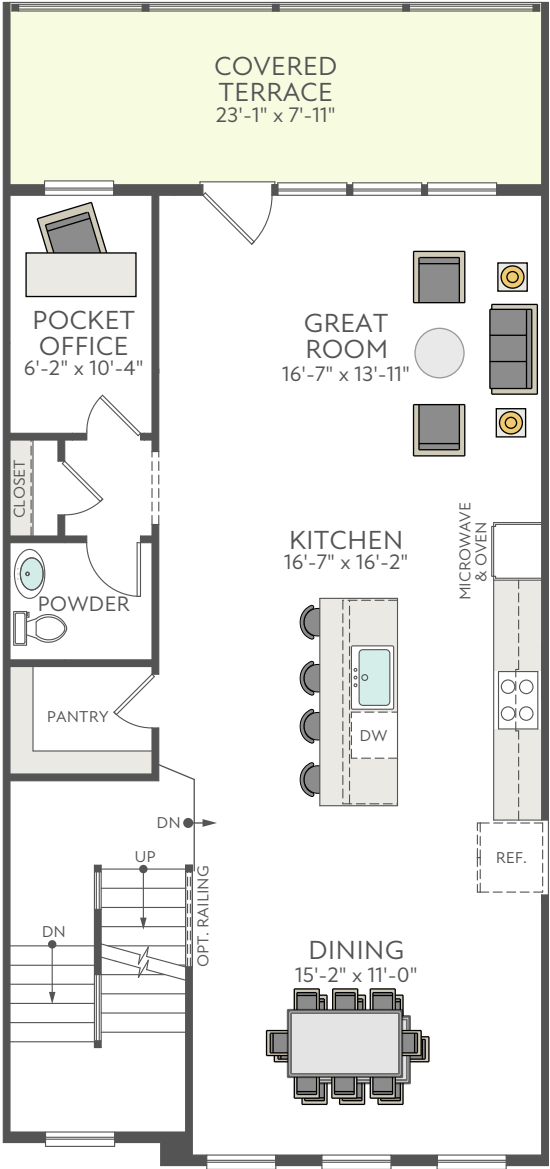
Up to 2,550 Sq Ft | 3 Bedrooms | 2.5 Bathrooms | 1 Bay Garage



LOWER LEVEL

Bellamy **Second Floor**

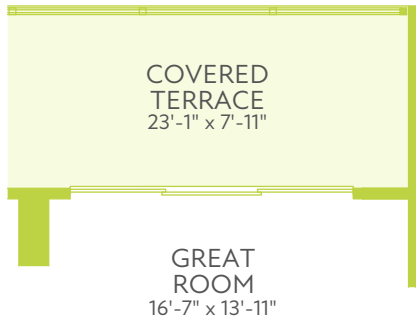
Up to 2,550 Sq Ft | 3 Bedrooms | 2.5 Bathrooms | 1 Bay Garage



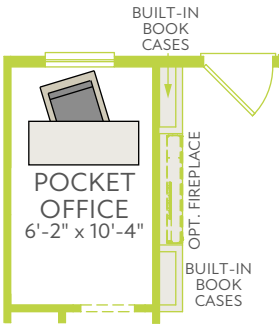
SECOND FLOOR

Bellamy Second Floor Additional Options

Up to 2,550 Sq Ft | 3 Bedrooms | 2.5 Bathrooms | 1 Bay Garage



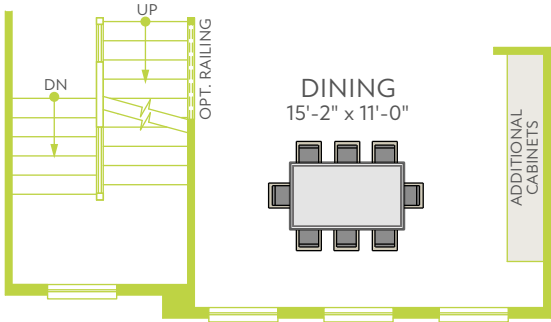
OPT. 12080 3 TO 4-PANEL SLIDING GLASS DOOR AT GREAT ROOM



OPT. BUILT-IN BOOKCASES AT GREAT ROOM



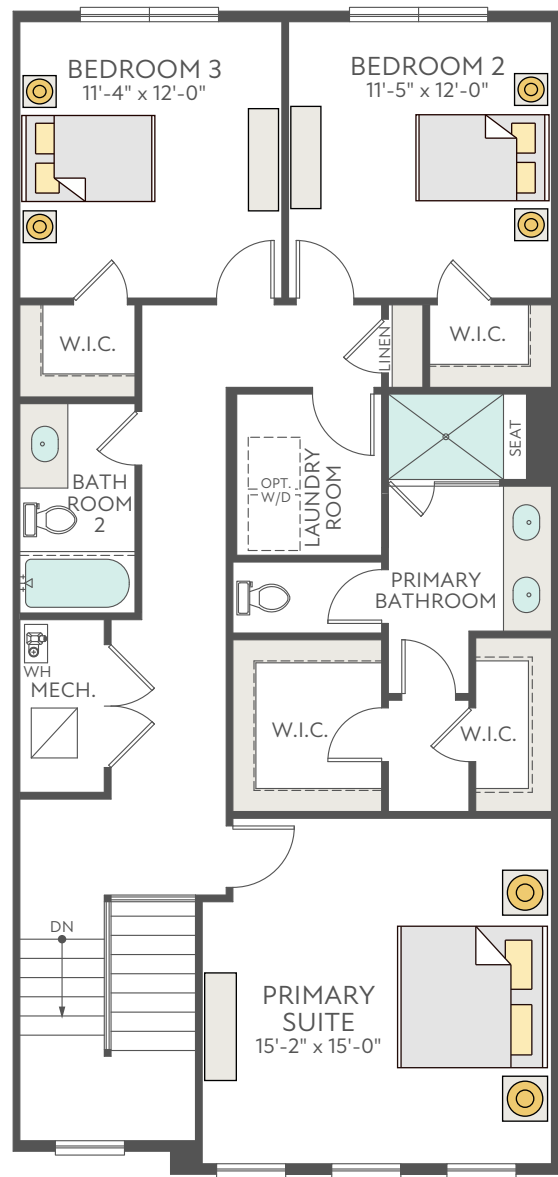
OPT. FIREPLACE AT GREAT ROOM



OPT. ADDITIONAL CABINETS AT DINING ROOM

Bellamy Third Floor

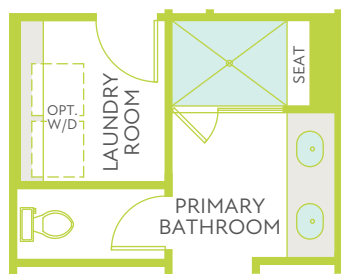
Up to 2,550 Sq Ft | 3 Bedrooms | 2.5 Bathrooms | 1 Bay Garage



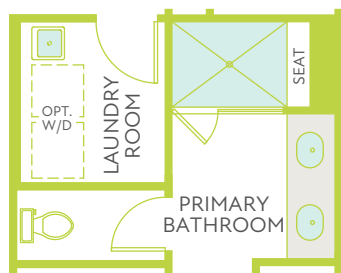
THIRD FLOOR

Bellamy Third Floor Additional Options

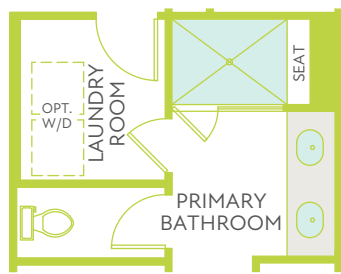
Up to 2,550 Sq Ft | 3 Bedrooms | 2.5 Bathrooms | 1 Bay Garage



OPT. CABINETS AT
LAUNDRY ROOM



OPT. SINK AT LAUNDRY ROOM



OPT. ADDITIONAL INTERIOR DOOR
AT LAUNDRY ROOM

INCLUDED FEATURES



Northpark Lofts

CURB APPEAL

- ▶ Exterior styles featuring a mix of brick and siding (per plan)
- ▶ Therma Tru entry door with matte black hardware
- ▶ 1-bay garage with garage door opener

THE DETAILS

- ▶ 9' ceilings on all levels
- ▶ Stained oak staircase from the main living level to bedroom level
- ▶ Shaw 7" Luxury Vinyl Plank flooring on the main living level, lower level entry and laundry room
- ▶ Choice of 2-panel or 5-panel interior doors
- ▶ Schlage Latitude Lever in chrome door hardware
- ▶ White ventilated closet shelving

BEAUTIFUL BATHROOMS & LAUNDRIES

- ▶ Primary Bath
 - Luxurious walk-in shower
 - 12"x24" Ceramic tile floor and 12"x12" wall tile to ceiling
 - Designer cabinets with choice of finishes
 - Vanities with double sinks & quartz countertops
 - Delta fixtures in chrome finish
 - Elongated toilet
- ▶ Powder Room
 - Pedestal sink with Delta fixture in chrome finish
 - Elongated toilet
- ▶ Secondary Baths
 - Designer cabinets with choice of finishes
 - Vanity with granite countertops & Delta fixtures in chrome finish
 - Elongated toilet
 - 12"x12" Ceramic tile floors and 3"x6" wall
- ▶ Laundry room on bedroom level

KITCHEN ENVY

- ▶ 42" designer cabinets with choice of finishes
- ▶ Large kitchen island
- ▶ Quartz countertops with choice of colors
- ▶ Whirlpool Stainless Steel appliances including built-in side-by-side refrigerator, gas cooktop, ENERGY STAR dishwasher, and single wall oven and built-in microwave
- ▶ Stainless steel undermount kitchen sink
- ▶ Delta Essa Touch faucet

DISTINCTIVELY INTELLIGENT

- ▶ HomeSmart® package includes the following devices:
 - WiFi Mesh network
 - Cat6 wiring
 - Schlage Encode front door lock
 - Ring Pro doorbell
 - Liftmaster® garage door opener with two remotes
 - 2 Leviton® WiFi smart switches (front door & foyer)
 - Ecobee3 Lite thermostat (per plan)

ENERGY AND EARTH FRIENDLY

- ▶ Low-e black exterior/white interior vinyl windows
- ▶ Energy Efficient Carrier® HVAC with gas heat and humidifier
- ▶ Rinnai Tankless Water Heater
- ▶ Merv 13 air filter
- ▶ Whole home surge protection
- ▶ Finished garage
- ▶ Electrical conduit rough in for future car charger

Life-changing by Design



The prices of our homes, included features, plans, specifications, promotions/incentives, neighborhood build-out and available locations are subject to change without notice. Stated dimensions, square footage and acreage are approximate and should not be used as a representation of any home's or homesite's precise or actual size, location or orientation. There is no guarantee that any particular homesite or home will be available. No information or material herein is to be construed to be an offer or solicitation for sale. A Broker/Agent must register their client in person on client's first visit at each community for a Broker/Agent to receive a commission or referral fee, if available. Not all features and options are available in all homes. Unless otherwise expressly stated, homes do not come with hardscape, landscape, or other decorator items. Any photographs or renderings used herein reflect artists' conceptions and are for illustrative purposes only. Community maps, illustrations, plans and/or amenities reflect our current vision and are subject to change without notice. Maps not to scale. Photographs or renderings of people do not depict or indicate any preference regarding race, religion, gender, sexual orientation, disability, familial status, or national origin. Some amenities may not yet be constructed. Builder reserves the right to change the size, design, configuration and location of amenities not yet constructed and does not warrant the suitability thereof for any use or for any person. There is no guarantee that any particular homesite, home or common area will offer a view or that any particular view will be preserved. Views may also be altered by subsequent development, construction, and landscaping growth. A link to a third party website does not imply endorsement of that site nor any ability to control that site's privacy practices. Marketing promotions/incentives, if any, are subject to conditions or restrictions and are subject to change without notice. No warranty or guarantee is made regarding any particular area public school/school district or that any particular public school/school district will service any given community. Schools/school districts may change over time. Builder does not warrant the suitability of any trail for any use or for any person. Our name and the logos contained herein are registered trademarks of Tri Pointe Homes, Inc. and/or its subsidiaries. © 2021 Tri Pointe Homes, Inc. All rights reserved. For State Licensing and Notices, see <https://www.tripointehomes.com/statelicensenotices>. 11/10/2020





The prices of our homes, included features, plans, specifications, promotions/incentives, neighborhood build-out and available locations are subject to change without notice. Stated dimensions, square footage and acreage are approximate and should not be used as a representation of any home's or homesite's precise or actual size, location or orientation. There is no guarantee that any particular homesite or home will be available. No information or material herein is to be construed to be an offer or solicitation for sale. A Broker/Agent must register their client in person on client's first visit at each community for a Broker/Agent to receive a commission or referral fee, if available. Not all features and options are available in all homes. Unless otherwise expressly stated, homes do not come with hardscape, landscape, or other decorator items. Any photographs or renderings used herein reflect artists' conceptions and are for illustrative purposes only. Community maps, illustrations, plans and/or amenities reflect our current vision and are subject to change without notice. Maps not to scale. Photographs or renderings of people do not depict or indicate any preference regarding race, religion, gender, sexual orientation, disability, familial status, or national origin. Some amenities may not yet be constructed. Builder reserves the right to change the size, design, configuration and location of amenities not yet constructed and does not warrant the suitability thereof for any use or for any person. There is no guarantee that any particular homesite, home or common area will offer a view or that any particular view will be preserved. Views may also be altered by subsequent development, construction, and landscaping growth. A link to a third party website does not imply endorsement of that site nor any ability to control that site's privacy practices. Marketing promotions/incentives, if any, are subject to conditions or restrictions and are subject to change without notice. No warranty or guarantee is made regarding any particular area public school/school district or that any particular public school/school district will service any given community. Schools/school districts may change over time. Builder does not warrant the suitability of any trail for any use or for any person. Our name and the logos contained herein are registered trademarks of Tri Pointe Homes, Inc. and/or its subsidiaries. © 2023 Tri Pointe Homes, Inc. All rights reserved. For State Licensing and Notices, see <https://www.tripointehomes.com/statelicense-notices>. 08/2023



Homes in this community are located near an airport and subject to aircraft overflights and noise due to aircraft. Contact Loudoun County Government to verify whether your home is located within the Airport Impact Overlay District and the regulations that apply.