



Sendero at Folsom Ranch

Life-changing by Design



Sendero Plan 1

Approx. 1,566 Sq Ft | 3 Bedrooms | 2 Bathrooms | 2 Bay Garage



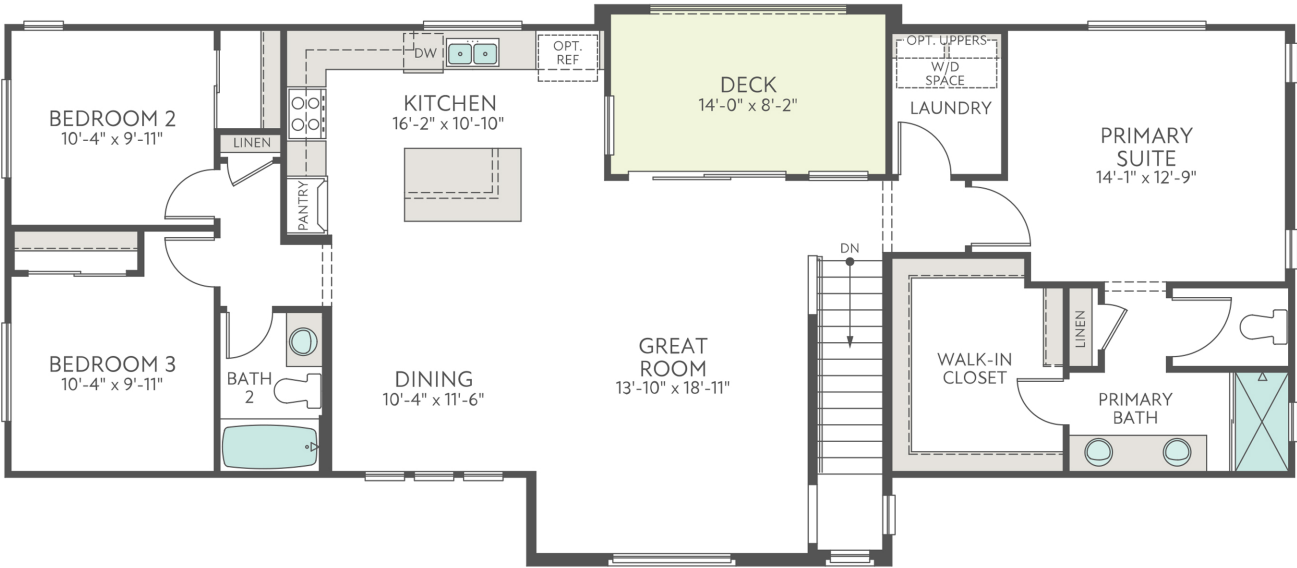
Plan 1A



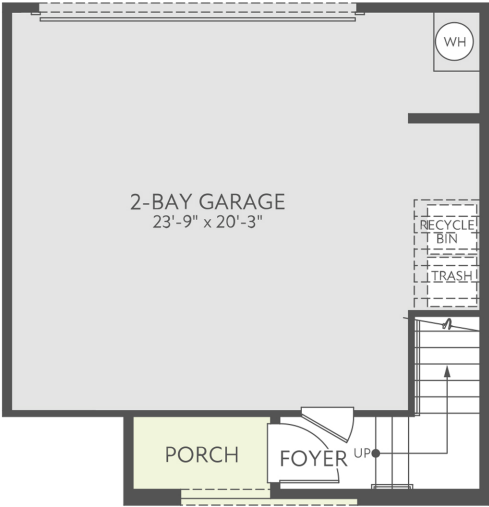
Plan 1B



Plan 1C



SINGLE FLOOR



GARAGE

*The prices of our homes, included features, plans, specifications, promotions/incentives, neighborhood build-out and available locations are subject to change without notice. Stated dimensions, square footage and acreage are approximate and should not be used as a representation of any home's or homesite's precise or actual size, location or orientation. There is no guarantee that any particular homesite or home will be available. No information or material herein is to be construed to be an offer or solicitation for sale. Not all features and options are available in all homes. Unless otherwise expressly stated, homes do not come with hardscape, landscape, or other decorator items. Any photographs or renderings used herein reflect artists' conceptions and are for illustrative purposes only. Community maps, illustrations, plans and/or amenities reflect our current vision and are subject to change without notice. Maps not to scale. Some amenities may not yet be constructed. Builder reserves the right to change the size, design, configuration and location of amenities not yet constructed and does not warrant the suitability thereof for any use or for any person. There is no guarantee that any particular homesite, home or common area will offer a view or that any particular view will be preserved. Views may also be altered by subsequent development, construction, and landscaping growth. Our name and the logos contained herein are registered trademarks of Tri Pointe Homes, Inc. and/or its subsidiaries. © 2022 Tri Pointe Homes Holdings, Inc. California Contractor's License No. 1018637. California DRE License No. 02025660. All rights reserved. 8.17.2023

Sendero Plan 2

Approx. 1,636 Sq Ft | 4 Bedrooms | 3 Bathrooms | 2 Bay Garage



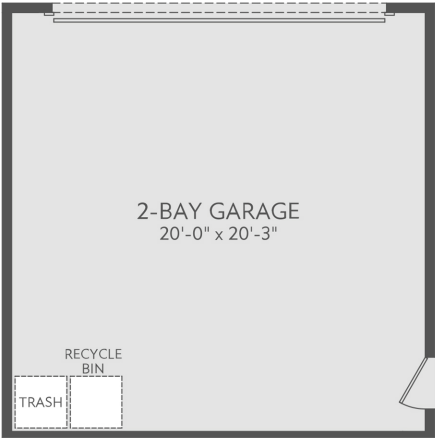
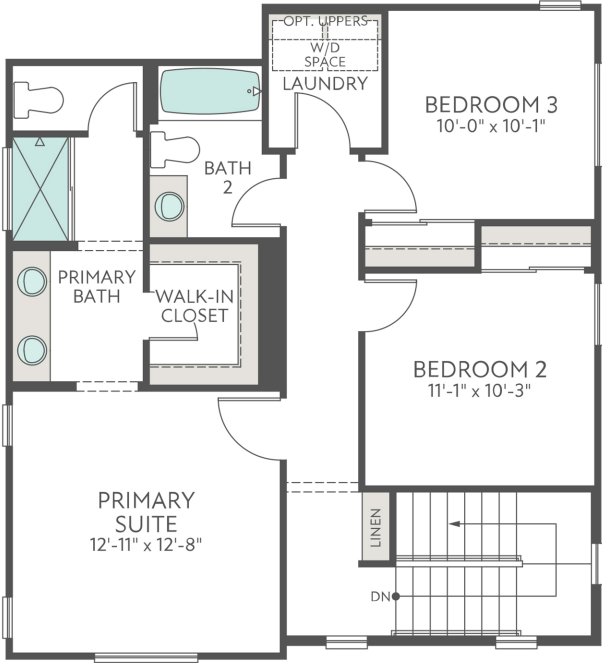
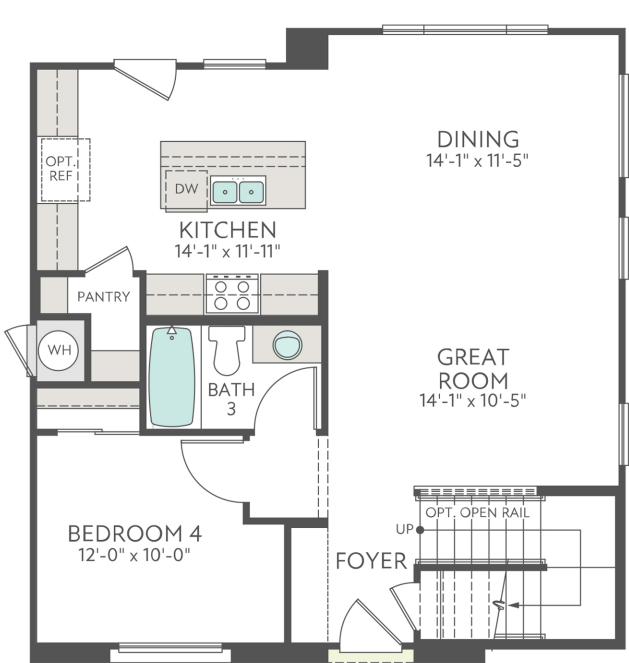
Plan 2A



Plan 2B



Plan 2C



FIRST FLOOR

SECOND FLOOR

GARAGE

Sendero Plan 3

Approx. 1,870 Sq Ft | 4 Bedrooms | 3 Bathrooms | 2 Bay Garage



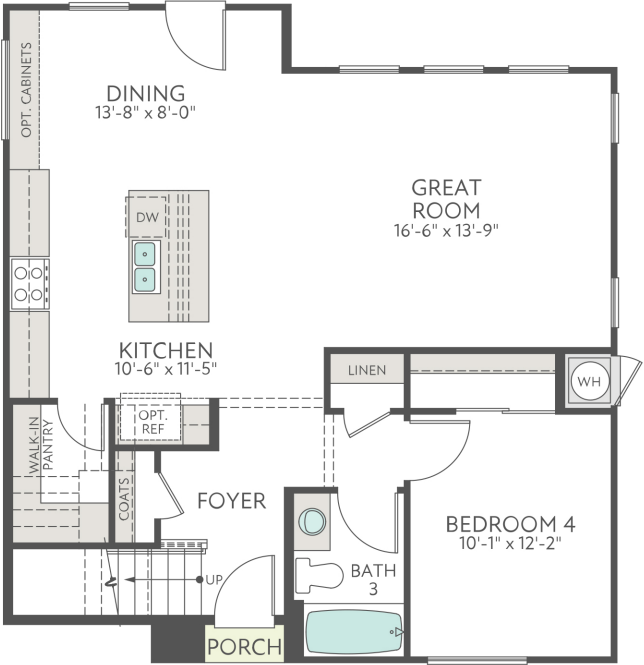
Plan 3A



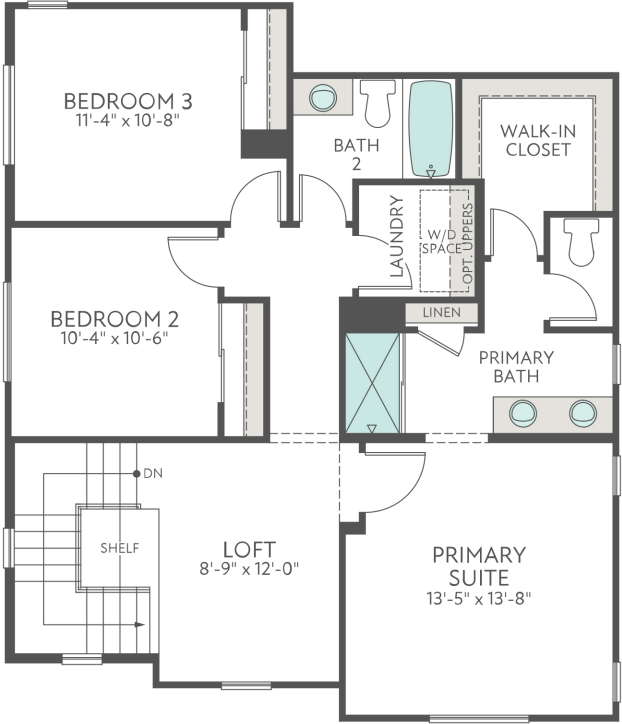
Plan 3B



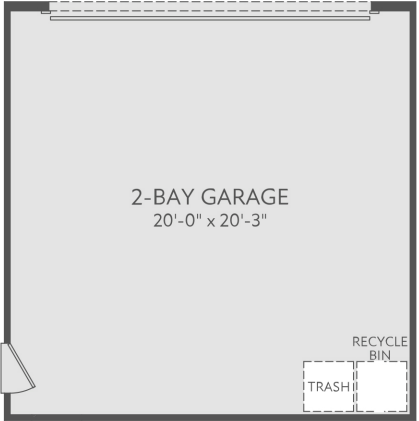
Plan 3C



FIRST FLOOR



SECOND FLOOR



GARAGE

*The prices of our homes, included features, plans, specifications, promotions/incentives, neighborhood build-out and available locations are subject to change without notice. Stated dimensions, square footage and acreage are approximate and should not be used as a representation of any home's or homesite's precise or actual size, location or orientation. There is no guarantee that any particular homesite or home will be available. No information or material herein is to be construed to be an offer or solicitation for sale. Not all features and options are available in all homes. Unless otherwise expressly stated, homes do not come with hardscape, landscape, or other decorator items. Any photographs or renderings used herein reflect artists' conceptions and are for illustrative purposes only. Community maps, illustrations, plans and/or amenities reflect our current vision and are subject to change without notice. Maps not to scale. Some amenities may not yet be constructed. Builder reserves the right to change the size, design, configuration and location of amenities not yet constructed and does not warrant the suitability thereof for any use or for any person. There is no guarantee that any particular homesite, home or common area will offer a view or that any particular view will be preserved. Views may also be altered by subsequent development, construction, and landscaping growth. Our name and the logos contained herein are registered trademarks of Tri Pointe Homes, Inc. and/or its subsidiaries. © 2025 Tri Pointe Homes Holdings, Inc. California Contractor's License No. 1018637. California DRE License No. 02025660. All rights reserved. 8.17.2023

Sendero

INCLUDED FEATURES

AUTHENTIC CHARACTER & DETAIL

- ▶ Exquisite architectural detailing with three stunning exterior styles
- ▶ Architecturally inspired 8' entry doors
- ▶ Elegant exterior coach light fixture that compliments the architectural style and LED surface mount overhead lighting at porches
- ▶ Illuminated custom address plaque to coordinate with neighborhood
- ▶ Stylish 8' garage doors with WiFi enabled door opener

INSPIRING KITCHEN DESIGNS

- ▶ Attractive granite slab countertops with 6" backsplash
- ▶ Hand-set 12" x 12" DalTile® ceramic tile flooring at the Kitchen
- ▶ GE® stainless steel appliance package, including:
 - Multi-cycle built-in dishwasher
 - Gourmet 30" induction with built-in convection and air fryer oven
 - Over the range microwave
- ▶ InSinkErator® heavy duty garbage disposal
- ▶ Durable, easy-care Amerisink® stainless steel sink
- ▶ Delta® chrome pullout kitchen faucet with touch technology
- ▶ Convenient recycling cabinet

GRACIOUS INTERIOR APPOINTMENTS

- ▶ Premium Beech recessed door cabinetry in an elegant finish with adjustable shelving, and easy-clean interiors throughout
- ▶ Homes feature an abundance of windows throughout to increase connectivity to the outdoors
- ▶ Luxurious 9' ceiling heights at first and second floors
- ▶ 3 ¼" baseboard and 2 ¼" door casing in Craftsman style throughout
- ▶ Distinctive raised panel doors with Schlage® satin nickel interior door hardware

- ▶ Hand-set 12" x 12" DalTile® ceramic tile flooring at entry, bathrooms and laundry
- ▶ Low-maintenance solid surface countertops and designer chrome fixtures and accessories at secondary baths
- ▶ Dual combination USB receptacle at Kitchen and Primary Bedroom
- ▶ Technology pre-wiring with enhanced Category 6e data and RG-6 coaxial cable TV in Great Room and Primary Bedroom
- ▶ Flat screen pre-wire in Great Room
- ▶ Bullnose drywall corners
- ▶ Whole home surge protection
- ▶ Dedicated prewire/outlet for electric car charger
- ▶ Ceiling fan pre-wire at Great Room

BEAUTIFULLY DETAILED PRIMARY SUITES

- ▶ Spacious Primary bath with low-maintenance solid surface vanity countertops
- ▶ Gerber® topmount sinks
- ▶ Delta® single-handle faucets with coordinating chrome fixtures at shower
- ▶ Shower includes semi-frameless enclosure
- ▶ Hand-set 12" x 12" DalTile® ceramic tile flooring at Primary Bath
- ▶ Coordinating chrome towel bars and paper holder
- ▶ Full width mirrors
- ▶ Elongated, modern toilet at separate private toilet compartment
- ▶ Spacious walk-in closets
- ▶ Ceiling fan pre-wiring at Primary Bedroom



Sendero Map



*The prices of our homes, included features, plans, specifications, promotions/incentives, neighborhood build-out and available locations are subject to change without notice. Stated dimensions, square footage and acreage are approximate and should not be used as a representation of any home's or homesite's precise or actual size, location or orientation. There is no guarantee that any particular homesite or home will be available. No information or material herein is to be construed to be an offer or solicitation for sale. Not all features and options are available in all homes. Unless otherwise expressly stated, homes do not come with hardscape, landscape, or other decorator items. Any photographs or renderings used herein reflect artists' conceptions and are for illustrative purposes only. Community maps, illustrations, plans and/or amenities reflect our current vision and are subject to change without notice. Maps not to scale. Some amenities may not yet be constructed. Builder reserves the right to change the size, design, configuration and location of amenities not yet constructed and does not warrant the suitability thereof for any use or for any person. There is no guarantee that any particular homesite, home or common area will offer a view or that any particular view will be preserved. Views may also be altered by subsequent development, construction, and landscaping growth. Our name and the logos contained herein are registered trademarks of Tri Pointe Homes, Inc. and/or its subsidiaries. © 2025 Tri Pointe Homes Holdings, Inc. California Contractor's License No. 1018637. California DRE License No. 02025660. All rights reserved. 7.15.2022

Life-changing by Design

