

tri pointe[®] HOMES

COMMUNITY ►

SITEPLAN ►

FLOORPLANS ►

INCLUDED FEATURES ►



Life-changing by Design

Cameron at Eisenhower Pointe | 240.559.5079

Cameron at Eisenhower Pointe

A brand-new neighborhood of luxury townhomes in West End Alexandria lies inside the Beltway and yet completely outside of the ordinary. With Van Dorn Metro two blocks away and Old Town just a few miles East, convenience is uniquely charming. And at home, a townhome that feels custom created just for you. Designed for universal appeal, but finished to become so much more personal than that, using all the same finishes that helped Emmy-Nominated TV Host and Style Icon, Bobby Berk, create this model home.

Timeless in its charm, yet always evolving in what it offers. Eisenhower Pointe puts you on the map, right in the middle of opportunity that becomes your everyday experience.

Highlighted Included Features

- ▶ 4-levels
- ▶ Rooftop terraces
- ▶ Two Blocks to Van Dorn Metro
- ▶ Convenient to Old Town, Wegmans 495
- ▶ HomeSmart automation technology included

Julie O'Gilvie

NEW HOME ADVISOR

E Julie.Ogilvie@TriPointeHomes.com

P 240.507.6158

W TriPointeHomes.com

Areana Goodrum

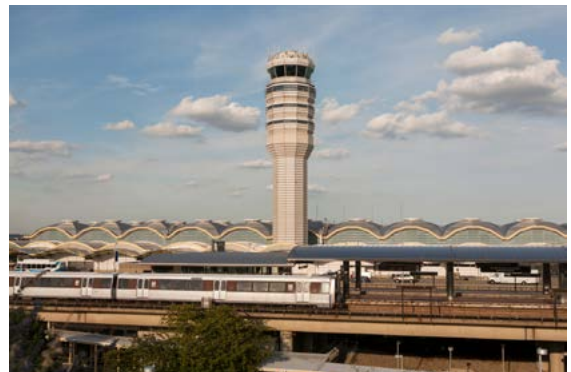
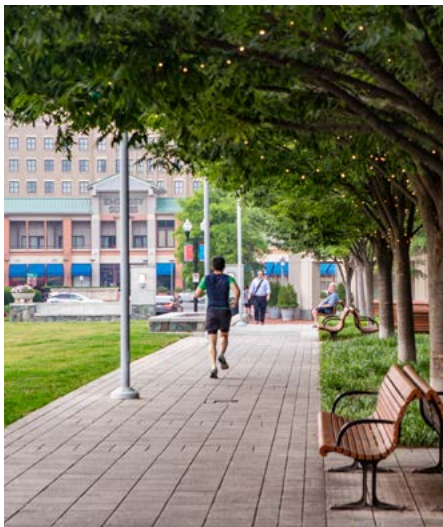
NEW HOME ADVISOR

E Areana.Goodrum@TriPointeHomes.com

P 703.795.3963

W TriPointeHomes.com





The prices of our homes, included features, plans, specifications, promotions/incentives, neighborhood build-out and available locations are subject to change without notice. Stated dimensions, square footage and acreage are approximate and should not be used as a representation of any home's or homesite's precise or actual size, location or orientation. There is no guarantee that any particular homesite or home will be available. No information or material herein is to be construed to be an offer or solicitation for sale. A Broker/Agent must register their client in person on client's first visit at each community for a Broker/Agent to receive a commission or referral fee, if available. Not all features and options are available in all homes. Unless otherwise expressly stated, homes do not come with hardscape, landscape, or other decorator items. Any photographs or renderings used herein reflect artists' conceptions and are for illustrative purposes only. Community maps, illustrations, plans and/or amenities reflect our current vision and are subject to change without notice. Maps not to scale. Photographs or renderings of people do not depict or indicate any preference regarding race, religion, gender, sexual orientation, disability, familial status, or national origin. Some amenities may not yet be constructed. Builder reserves the right to change the size, design, configuration and location of amenities not yet constructed and does not warrant the suitability thereof for any use or for any person. There is no guarantee that any particular homesite, home or common area will offer a view or that any particular view will be preserved. Views may also be altered by subsequent development, construction, and landscaping growth. A link to a third party website does not imply endorsement of that site nor any ability to control that site's privacy practices. Marketing promotions/incentives, if any, are subject to conditions or restrictions and are subject to change without notice. No warranty or guarantee is made regarding any particular area public school/school district or that any particular public school/school district will service any given community. Schools/school districts may change over time. Builder does not warrant the suitability of any trail for any use or for any person. Our name and the logos contained herein are registered trademarks of Tri Pointe Homes, Inc. and/or its subsidiaries. © 2023 Tri Pointe Homes, Inc. All rights reserved. For State Licensing and Notices, see <https://www.tripointehomes.com/statelicensenotices>.

Homes in this community are located near an airport and subject to aircraft overflights and noise due to aircraft. Contact Loudoun County Government to verify whether your home is located within the Airport Impact Overlay District and the regulations that apply.



Cameron at Eisenhower Pointe

tri pointe[®]
HOMES

SITE MAP



CAMERON AT EISENHOWER POINTE



Model



Life-changing by Design

tri pointe[®]
HOMES

The prices of our homes, included features, plans, specifications, promotions/incentives, neighborhood build-out and available locations are subject to change without notice. Stated dimensions, square footage and acreage are approximate and should not be used as a representation of any home's or homesite's precise or actual size, location or orientation. There is no guarantee that any particular homesite or home will be available. No information or material herein is to be construed to be an offer or solicitation for sale. A Broker/Agent must register their client in person on client's first visit at each community for a Broker/Agent to receive a commission or referral fee, if available. Not all features and options are available in all homes. Unless otherwise expressly stated, homes do not come with hardscape, landscape, or other decorator items. Any photographs or renderings used herein reflect artists' conceptions and are for illustrative purposes only. Community maps, illustrations, plans and/or amenities reflect our current vision and are subject to change without notice. Maps not to scale. Photographs or renderings of people do not depict or indicate any preference regarding race, religion, gender, sexual orientation, disability, familial status, or national origin. Some amenities may not yet be constructed. Builder reserves the right to change the size, design, configuration and location of amenities not yet constructed and does not warrant the suitability thereof for any use or for any person. There is no guarantee that any particular homesite, home or common area will offer a view or that any particular view will be preserved. Views may also be altered by subsequent development, construction, and landscaping growth. A link to a third party website does not imply endorsement of that site nor any ability to control that site's privacy practices. Marketing promotions/incentives, if any, are subject to conditions or restrictions and are subject to change without notice. No warranty or guarantee is made regarding any particular area public school/school district or that any particular public school/school district will service any given community. Schools/school districts may change over time. Builder does not warrant the suitability of any trail for any use or for any person. Our name and the logos contained herein are registered trademarks of Tri Pointe Homes, Inc. and/or its subsidiaries. © 2023 Tri Pointe Homes, Inc. All rights reserved. For State Licensing and Notices, see <https://www.tripointehomes.com/statelicensenotices>. 08/2023



Homes in this community are located near an airport and subject to aircraft overflights and noise due to aircraft. Contact Loudoun County Government to verify whether your home is located within the Airport Impact Overlay District and the regulations that apply.

Cameron at Eisenhower Pointe Clermont Home Design

1,898-1,917 Sq Ft | 3 Bedrooms | 2-3 Full, 1 Half Bathrooms | 2-Car Garage

Life-changing by Design



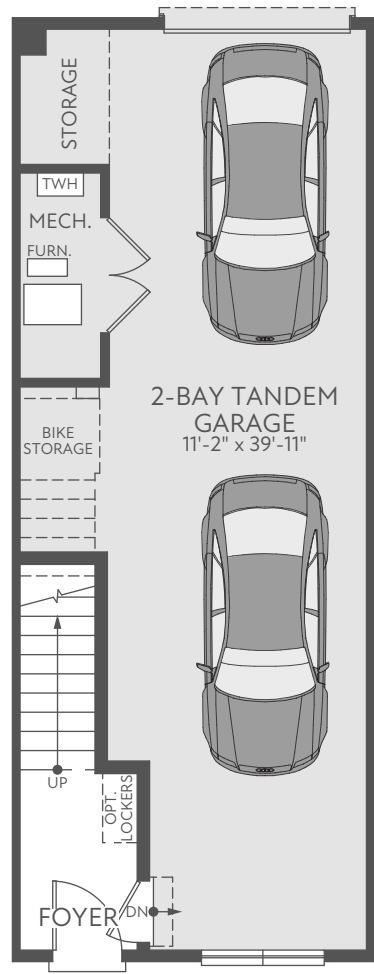
Clermont Home Design

1,898-1,917 Sq Ft | 3 Bedrooms | 2-3 Full, 1 Half Bathrooms | 2-Car Garage



Clermont Lower Level

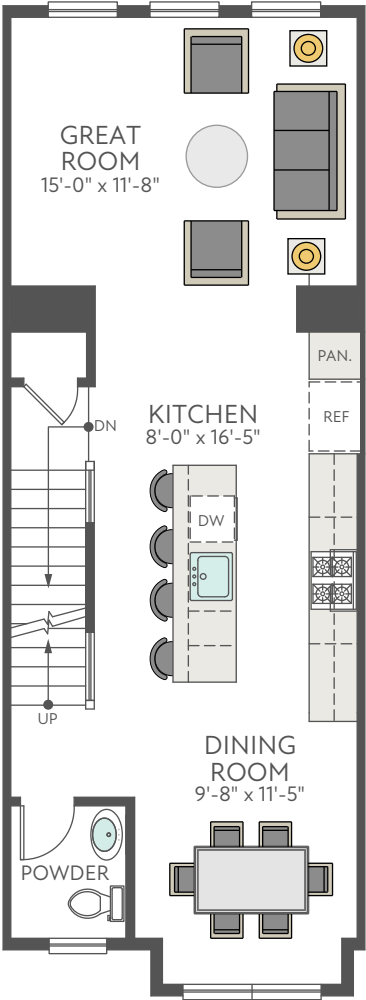
1,898-1,917 Sq Ft | 3 Bedrooms | 2-3 Full, 1 Half Bathrooms | 2-Car Garage



LOWER LEVEL

Clermont First Floor

1,898-1,917 Sq Ft | 3 Bedrooms | 2-3 Full, 1 Half Bathrooms | 2-Car Garage



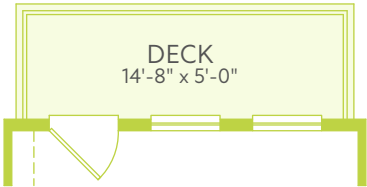
FIRST FLOOR

Clermont Firsts Floor Additional Options

1,898-1,917 Sq Ft | 3 Bedrooms | 2-3 Full, 1 Half Bathrooms | 2-Car Garage



OPT. PANTRY CABINET AT KITCHEN



OPT. DECK



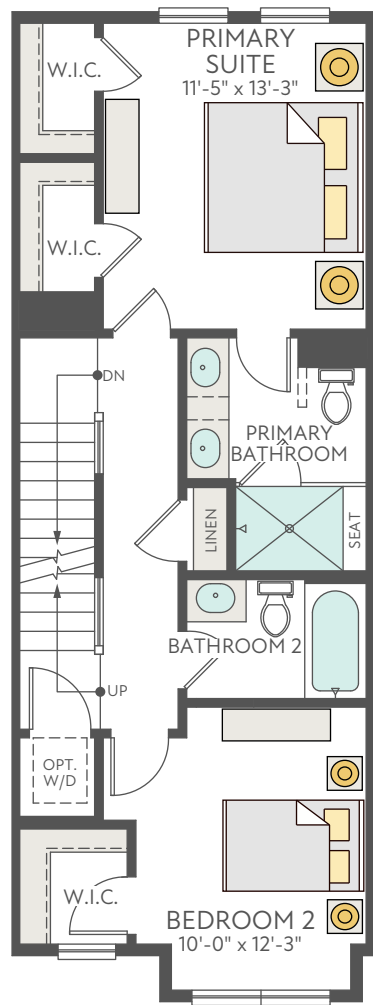
OPT. ELECTRIC FIREPLACE



OPT. BUILT-IN AT GREAT ROOM

Clermont Second Floor

1,898-1,917 Sq Ft | 3 Bedrooms | 2-3 Full, 1 Half Bathrooms | 2-Car Garage

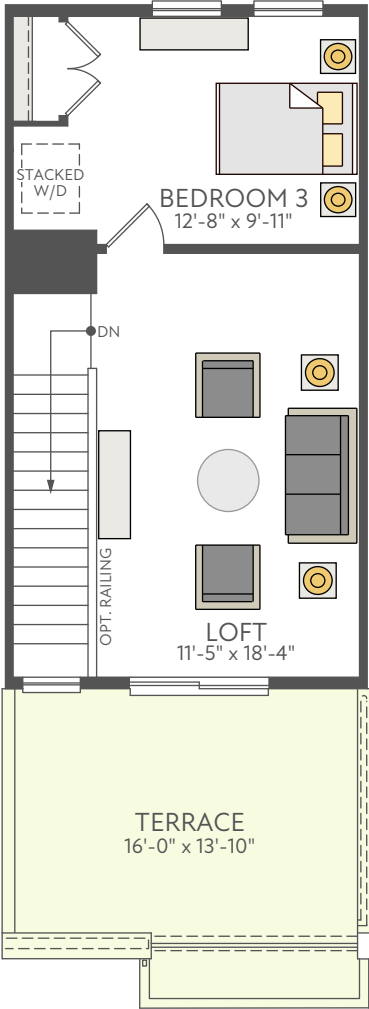


OPT. DOOR AT BATHROOM 2
AT SECOND FLOOR

SECOND FLOOR

Clermont Third Floor

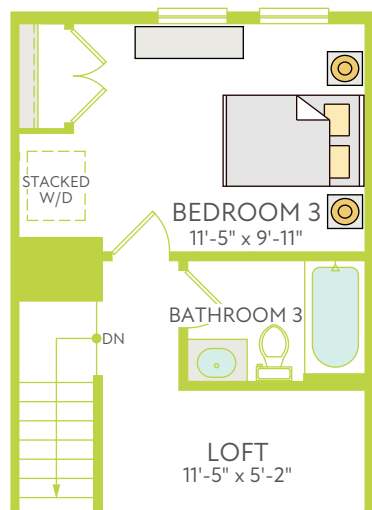
1,898-1,917 Sq Ft | 3 Bedrooms | 2-3 Full, 1 Half Bathrooms | 2-Car Garage



THIRD FLOOR

Clermont Third Floor Options

1,898-1,917 Sq Ft | 3 Bedrooms | 2-3 Full, 1 Half Bathrooms | 2-Car Garage



OPT. FULL BATHROOM AT THIRD FLOOR



OPT. DOOR BATHROOM 3
AT THIRD FLOOR



OPT. BEVARAGE CENTER AT LOFT

Cameron at Eisenhower Pointe Montgomery Home Design

2,632-2,705 Sq Ft | 3-4 Bedrooms | 2-4 Full, 1 Half Bathrooms | 2-Car Garage

Life-changing by Design



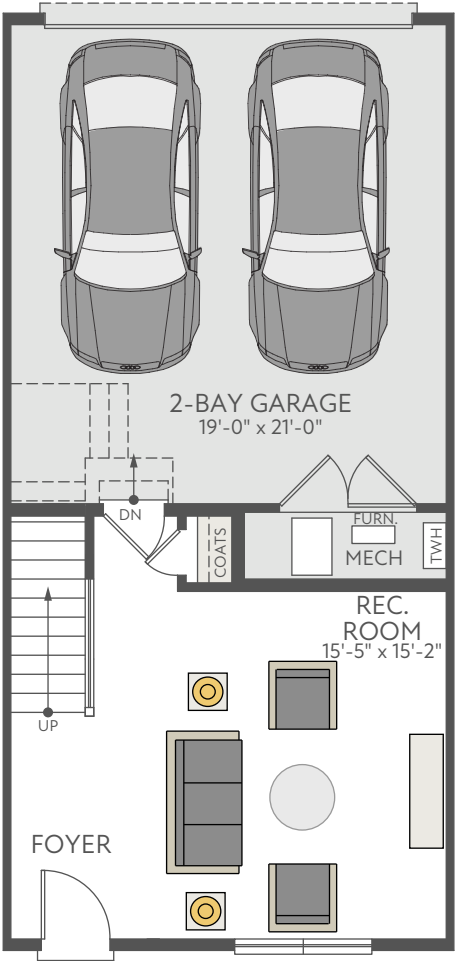
Montgomery Home Design

2,632-2,705 Sq Ft | 3-4 Bedrooms | 2-4 Full, 1 Half Bathrooms | 2-Car Garage



Montgomery Lower Level

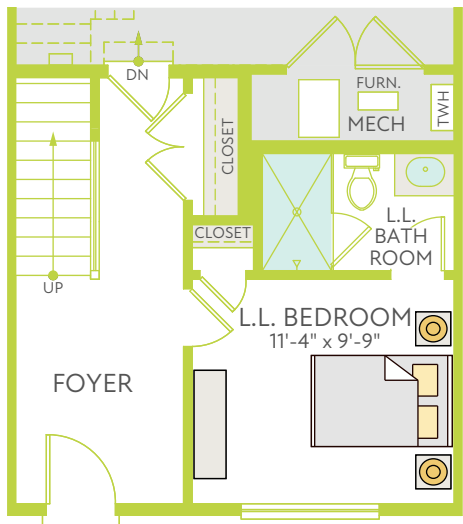
2,632-2,705 Sq Ft | 3-4 Bedrooms | 2-4 Full, 1 Half Bathrooms | 2-Car Garage



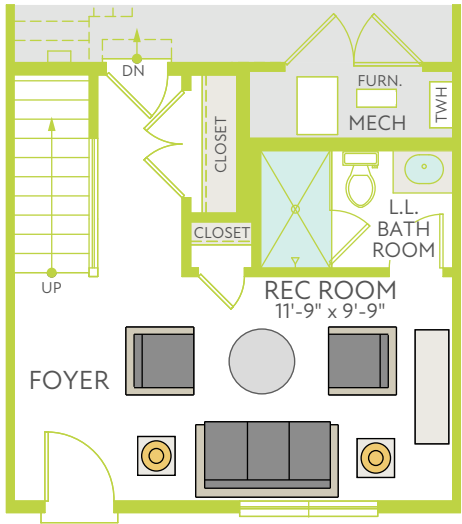
LOWER LEVEL

Montgomery Lower Level Options

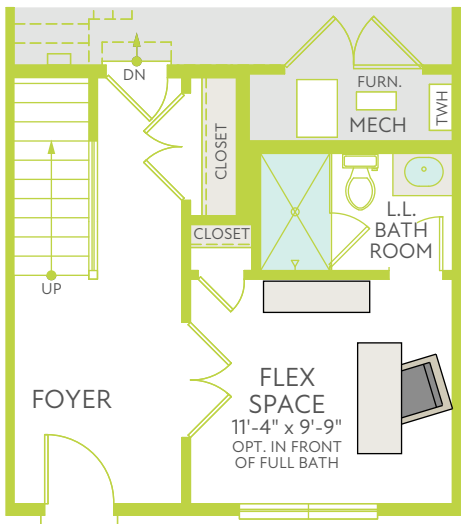
2,632-2,705 Sq Ft | 3-4 Bedrooms | 2-4 Full, 1 Half Bathrooms | 2-Car Garage



OPT. LOWER LEVEL BEDROOM AND
OPT. FULL BATH



OPT. FULL BATH W/ REC ROOM



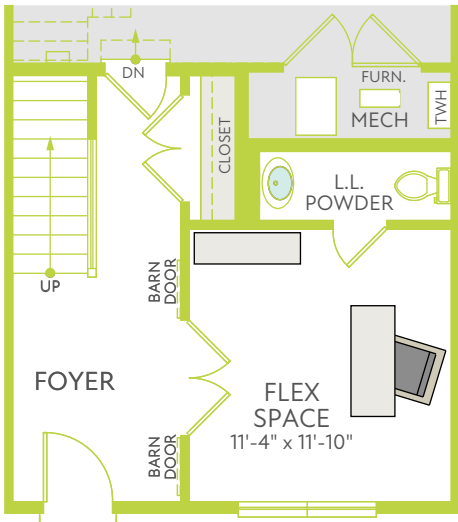
OPT. FLEX SPACE AND OPT. FULL BATH



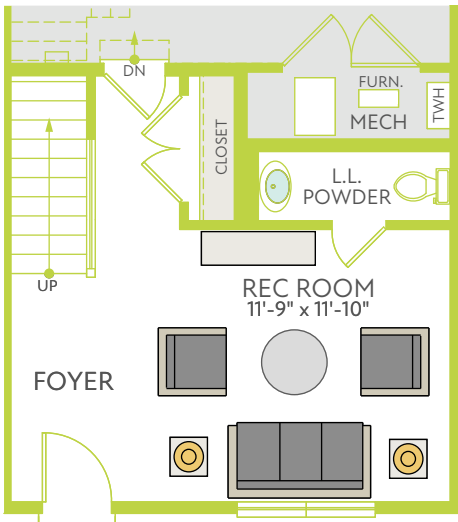
OPT. BARN DOORS AT FLEX SPACE

Montgomery Lower Level Options

2,632-2,705 Sq Ft | 3-4 Bedrooms | 2-4 Full, 1 Half Bathrooms | 2-Car Garage



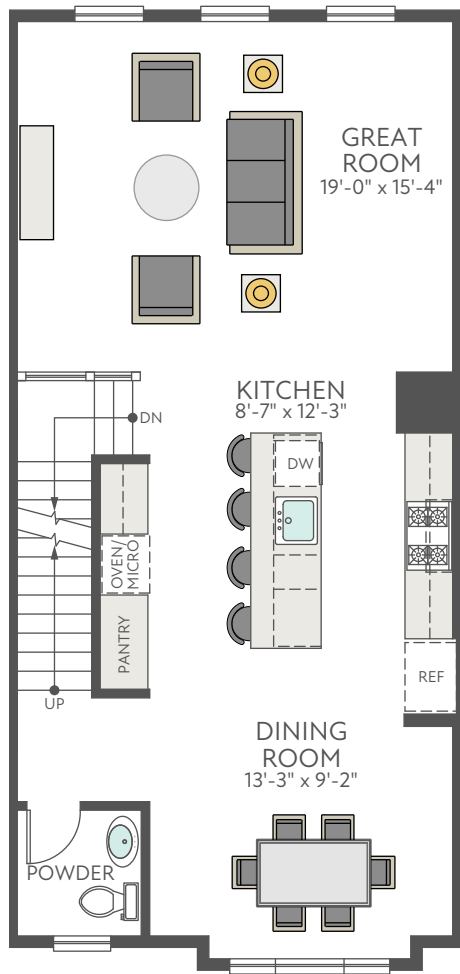
OPT. FLEX SPACE AND
OPT. POWDER ROOM



OPT. POWDER ROOM W/ REC ROOM

Montgomery First Floor

2,632-2,705 Sq Ft | 3-4 Bedrooms | 2-4 Full, 1 Half Bathrooms | 2-Car Garage



FIRST FLOOR

Montgomery First Floor Additional Options

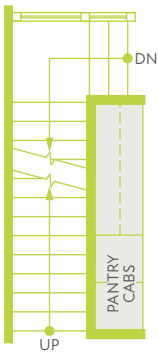
2,632-2,705 Sq Ft | 3-4 Bedrooms | 2-4 Full, 1 Half Bathrooms | 2-Car Garage



OPT. ELECTRIC FIREPLACE



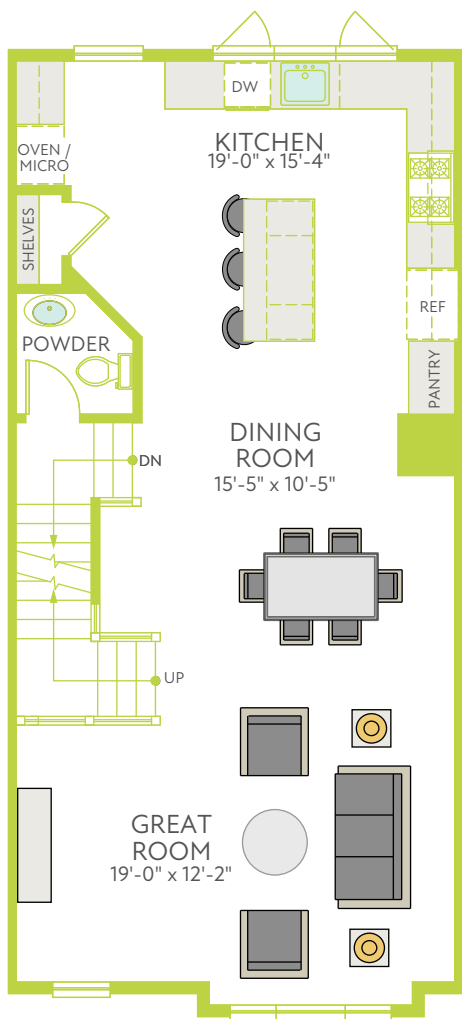
OPT. BUILT-INS AT GREAT ROOM



OPT. PANTRY CABINETS AT KITCHEN

Montgomery First Floor Additional Options

2,632-2,705 Sq Ft | 3-4 Bedrooms | 2-4 Full, 1 Half Bathrooms | 2-Car Garage



OPT. ELECTRIC FIREPLACE AT ALTERNATE FIRST FLOOR REAR KITCHEN

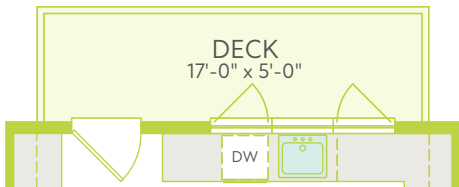


OPT. BUILT-INS AT ALTERNATE FIRST FLOOR REAR KITCHEN

OPT. ALTERNATE FIRST FLOOR REAR KITCHEN



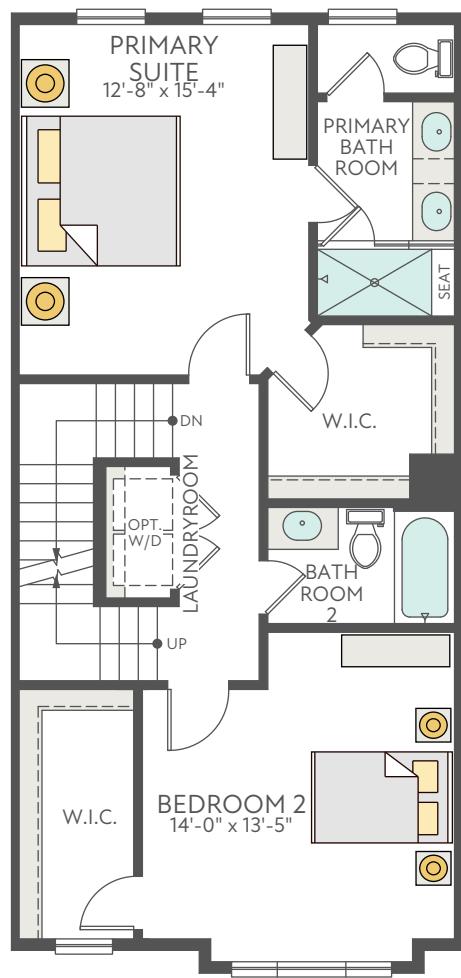
OPT. REAR DECK AT FIRST FLOOR



OPT. REAR KITCHEN DECK AT FIRST FLOOR

Montgomery Second Floor

2,632-2,705 Sq Ft | 3-4 Bedrooms | 2-4 Full, 1 Half Bathrooms | 2-Car Garage



OPT. UPPER CABINETS AT
LAUNDRY ROOM

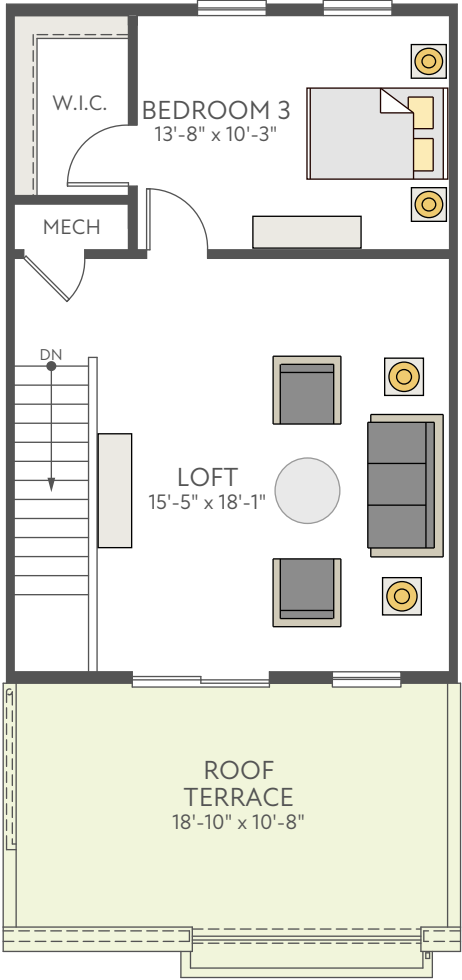


OPT. DOOR AT BATHROOM 2
AT SECOND FLOOR

SECOND FLOOR

Montgomery Third Floor

2,632-2,705 Sq Ft | 3-4 Bedrooms | 2-4 Full, 1 Half Bathrooms | 2-Car Garage



THIRD FLOOR

Montgomery Third Floor Additional Options

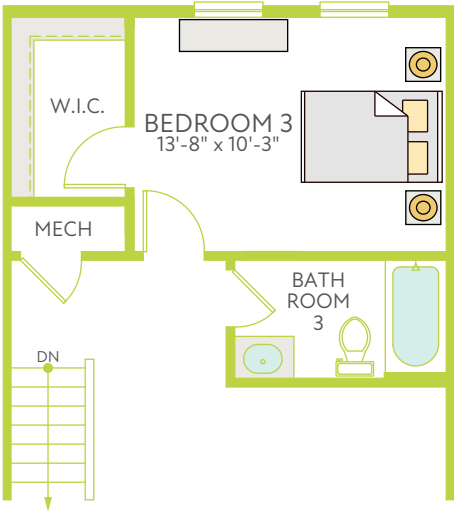
2,632-2,705 Sq Ft | 3-4 Bedrooms | 2-4 Full, 1 Half Bathrooms | 2-Car Garage



OPT. BEVERAGE CENTER AT LOFT



OPT. DOOR AT BATHROOM 3
AT THIRD FLOOR



OPT. FULL BATH AT THIRD FLOOR

INCLUDED FEATURES



Cameron at Eisenhower Pointe

CURB APPEAL

- ▶ Modern architecture featuring mix of brick and vinyl siding exteriors (per plan)
- ▶ Therma Tru entry door with matte black hardware
- ▶ 2-bay garage with garage door opener (per plan)
- ▶ Brushed concrete leadwalks

THE DETAILS

- ▶ Thoughtful designs with 9' ceilings
- ▶ Stained oak staircase from the lower level to the main living level
- ▶ Shaw Luxury Vinyl Plank flooring on the main living level, foyer and garage entry, mud room and laundry room
- ▶ Choice of 2-panel or 5-panel interior doors Schlage
- ▶ Plymouth knob satin chrome door hardware
- ▶ Ventilated white closet shelving

BEAUTIFUL BATHROOMS & LAUNDRIES

- ▶ Primary Bath
 - Walk-in shower with Delta polished chrome fixture
 - 12"x12" Ceramic tile floor and 6"x6" wall tile to ceiling
 - Aristokraft cabinets with choice of finishes
 - Vanities with double sinks & granite countertops
 - Delta chrome fixtures
 - Elongated toilet
- ▶ Powder Room
 - Pedestal sink with Delta chrome fixture
 - Elongated toilet
 - Shaw Luxury Vinyl Plank flooring
- ▶ Secondary Baths
 - Aristokraft cabinets with choice of finishes
 - Vanity with cultured marble top & Delta chrome fixtures
 - Elongated toilet
 - 6"x6" Ceramic tile floors and 6"x6" wall
- ▶ Laundry room on bedroom level

KITCHEN ENVY

- ▶ 42" designer Aristokraft cabinets with choice of finishes
- ▶ Large kitchen island
- ▶ Granite countertops with choice of colors
- ▶ KitchenAid® Stainless Steel appliances including built-in microwave, ENERGY STAR dishwasher and side-by-side refrigerator, gas range (Clermont) or gas cooktop with under cabinet hood and single wall oven (Montgomery)
- ▶ Stainless steel undermount kitchen sink
- ▶ Delta Essa Touch faucet

DISTINCTIVELY INTELLIGENT

- ▶ HomeSmart® package includes the following devices:
 - Mesh network
 - Cat6 wiring
 - Schlage Encode front door lock
 - Ring Pro doorbell
 - Liftmaster® garage door opener with two remotes
 - 2 Leviton® WiFi smart switches (front door & foyer)
 - Ecobee3 Lite thermostat (per plan)

ENERGY AND EARTH FRIENDLY

- ▶ Plygem white Low-e vinyl windows
- ▶ Energy Efficient Carrier® HVAC with gas heat and humidifier
- ▶ Rinnai Tankless Water Heater
- ▶ MERV 13 air filter
- ▶ Whole home surge protection
- ▶ LED surface mount lights
- ▶ Electrical conduit rough in for future car charger

Life-changing by Design



The prices of our homes, included features, plans, specifications, promotions/incentives, neighborhood build-out and available locations are subject to change without notice. Stated dimensions, square footage and acreage are approximate and should not be used as a representation of any home's or homesite's precise or actual size, location or orientation. There is no guarantee that any particular homesite or home will be available. No information or material herein is to be construed to be an offer or solicitation for sale. A Broker/Agent must register their client in person on client's first visit at each community for a Broker/Agent to receive a commission or referral fee, if available. Not all features and options are available in all homes. Unless otherwise expressly stated, homes do not come with hardscape, landscape, or other decorator items. Any photographs or renderings used herein reflect artists' conceptions and are for illustrative purposes only. Community maps, illustrations, plans and/or amenities reflect our current vision and are subject to change without notice. Maps not to scale. Photographs or renderings of people do not depict or indicate any preference regarding race, religion, gender, sexual orientation, disability, familial status, or national origin. Some amenities may not yet be constructed. Builder reserves the right to change the size, design, configuration and location of amenities not yet constructed and does not warrant the suitability thereof for any use or for any person. There is no guarantee that any particular homesite, home or common area will offer a view or that any particular view will be preserved. Views may also be altered by subsequent development, construction, and landscaping growth. A link to a third party website does not imply endorsement of that site nor any ability to control that site's privacy practices. Marketing promotions/incentives, if any, are subject to conditions or restrictions and are subject to change without notice. No warranty or guarantee is made regarding any particular area public school/school district or that any particular public school/school district will service any given community. Schools/school districts may change over time. Builder does not warrant the suitability of any trail for any use or for any person. Our name and the logos contained herein are registered trademarks of Tri Pointe Homes, Inc. and/or its subsidiaries. © 2021 Tri Pointe Homes, Inc. All rights reserved. For State Licensing and Notices, see <https://www.tripointehomes.com/statelicensenotices>. 11/10/2020





The prices of our homes, included features, plans, specifications, promotions/incentives, neighborhood build-out and available locations are subject to change without notice. Stated dimensions, square footage and acreage are approximate and should not be used as a representation of any home's or homesite's precise or actual size, location or orientation. There is no guarantee that any particular homesite or home will be available. No information or material herein is to be construed to be an offer or solicitation for sale. A Broker/Agent must register their client in person on client's first visit at each community for a Broker/Agent to receive a commission or referral fee, if available. Not all features and options are available in all homes. Unless otherwise expressly stated, homes do not come with hardscape, landscape, or other decorator items. Any photographs or renderings used herein reflect artists' conceptions and are for illustrative purposes only. Community maps, illustrations, plans and/or amenities reflect our current vision and are subject to change without notice. Maps not to scale. Photographs or renderings of people do not depict or indicate any preference regarding race, religion, gender, sexual orientation, disability, familial status, or national origin. Some amenities may not yet be constructed. Builder reserves the right to change the size, design, configuration and location of amenities not yet constructed and does not warrant the suitability thereof for any use or for any person. There is no guarantee that any particular homesite, home or common area will offer a view or that any particular view will be preserved. Views may also be altered by subsequent development, construction, and landscaping growth. A link to a third party website does not imply endorsement of that site nor any ability to control that site's privacy practices. Marketing promotions/incentives, if any, are subject to conditions or restrictions and are subject to change without notice. No warranty or guarantee is made regarding any particular area public school/school district or that any particular public school/school district will service any given community. Schools/school districts may change over time. Builder does not warrant the suitability of any trail for any use or for any person. Our name and the logos contained herein are registered trademarks of Tri Pointe Homes, Inc. and/or its subsidiaries. © 2023 Tri Pointe Homes, Inc. All rights reserved. For State Licensing and Notices, see <https://www.tripointehomes.com/statelicense-notices>. 08/2023



Homes in this community are located near an airport and subject to aircraft overflights and noise due to aircraft. Contact Loudoun County Government to verify whether your home is located within the Airport Impact Overlay District and the regulations that apply.