

# tri pointe<sup>®</sup> HOMES

COMMUNITY ▶

SITE PLAN ▶

FLOORPLANS ▶

INCLUDED FEATURES ▶



Life-changing by Design

Hensley at Eisenhower Pointe

## Hensley at Eisenhower Pointe

---

Creatively designed to fit right into a colorful Alexandria neighborhood, these 4-level open concept condominiums are ready to give high style a place to call home. Just blocks to Van Dorn Metro and moments to Old Town, Every day is a new chance to collect moments in the heart of your West End Alexandria location. Home designs expertly styled straight for your unique experience to a location that is up for anything, your connection to it all begins at home. And our partnership with style-arbiter and Emmy-winning TV show host, Bobby Berk, is helping to pull it all beautifully together. Here, life and style are not mutually exclusive. At Eisenhower Pointe you'll never have to choose one over the other. Instead, you can step into a lifestyle that was designed to look as good as it feels.

From a new home in Alexandria that is expertly designed to bring out your very best, just like this neighborhood that will never grow old.

### Highlighted Included Features

- ▶ 4 Spacious Levels
- ▶ Outdoor Living
- ▶ Two Blocks to Van Dorn Metro
- ▶ Convenient to Old Town, Wegmans, 495
- ▶ HomeSmart automation technology included

### Julie O'Gilvie

NEW HOME ADVISOR

**E** Julie.Ogilvie@TriPointeHomes.com

**P** 240.507.6158

**W** TriPointeHomes.com

### Gricelda Zamora

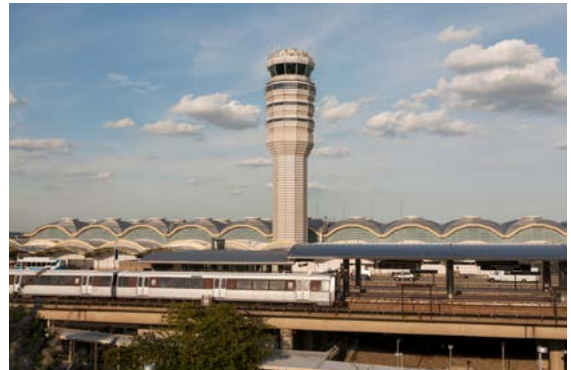
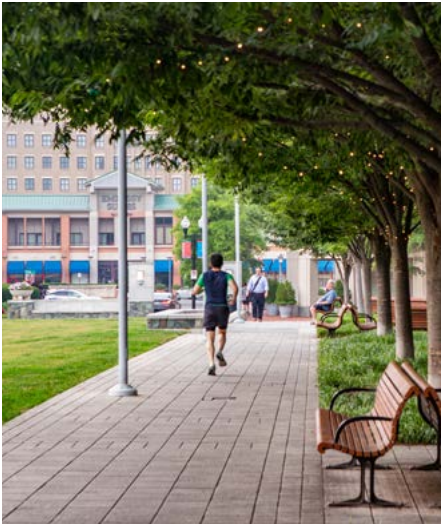
NEW HOME ADVISOR

**E** Gricelda.Zamora@TriPointeHomes.com

**P** 703.213.8952

**W** TriPointeHomes.com



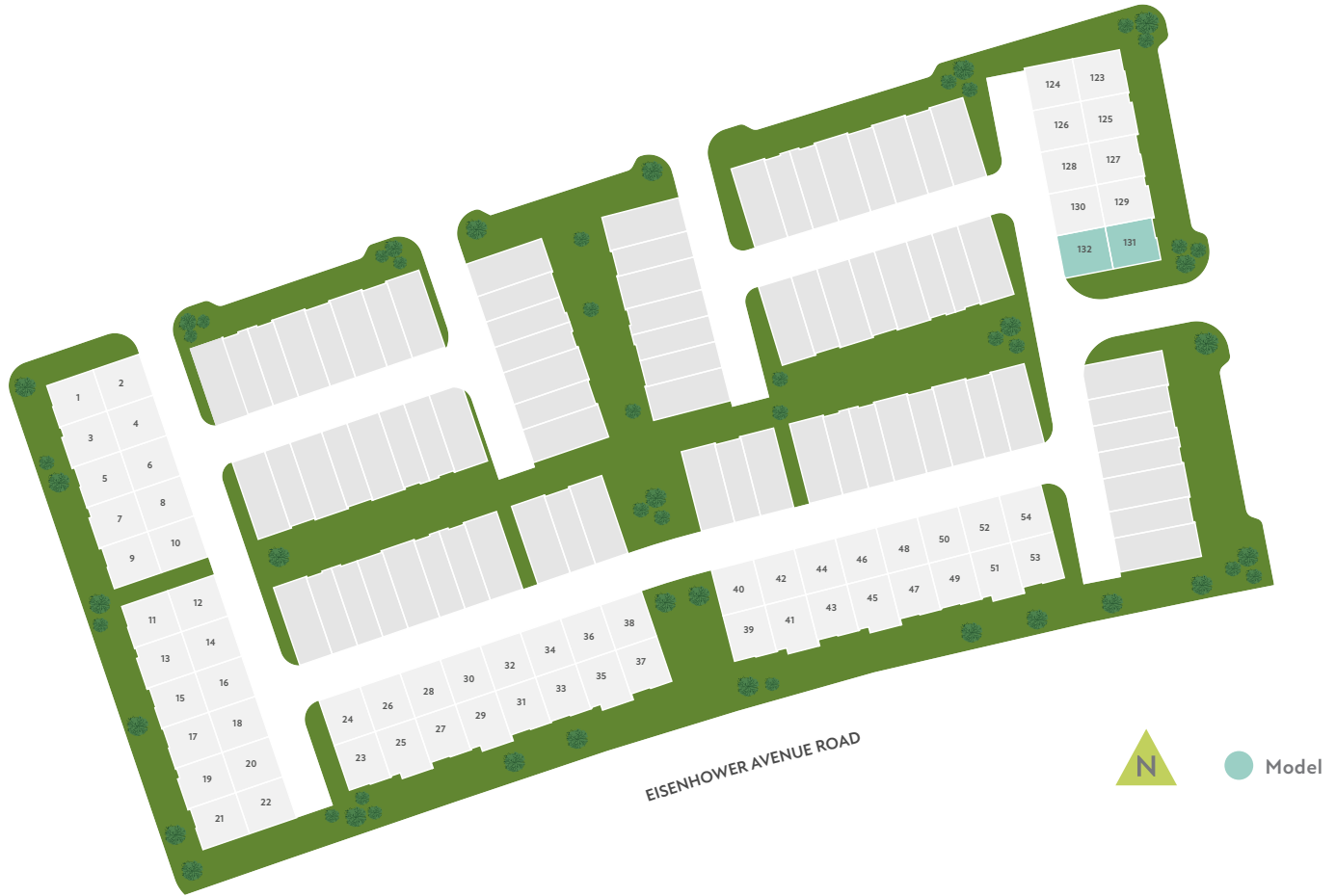


The prices of our homes, included features, plans, specifications, promotions/incentives, neighborhood build-out and available locations are subject to change without notice. Stated dimensions, square footage and acreage are approximate and should not be used as a representation of any home's or homesite's precise or actual size, location or orientation. There is no guarantee that any particular homesite or home will be available. No information or material herein is to be construed to be an offer or solicitation for sale. A Broker/Agent must register their client in person on client's first visit at each community for a Broker/Agent to receive a commission or referral fee, if available. Not all features and options are available in all homes. Unless otherwise expressly stated, homes do not come with hardscape, landscape, or other decorator items. Any photographs or renderings used herein reflect artists' conceptions and are for illustrative purposes only. Community maps, illustrations, plans and/or amenities reflect our current vision and are subject to change without notice. Maps not to scale. Photographs or renderings of people do not depict or indicate any preference regarding race, religion, gender, sexual orientation, disability, familial status, or national origin. Some amenities may not yet be constructed. Builder reserves the right to change the size, design, configuration and location of amenities not yet constructed and does not warrant the suitability thereof for any use or for any person. There is no guarantee that any particular homesite, home or common area will offer a view or that any particular view will be preserved. Views may also be altered by subsequent development, construction, and landscaping growth. A link to a third party website does not imply endorsement of that site nor any ability to control that site's privacy practices. Marketing promotions/incentives, if any, are subject to conditions or restrictions and are subject to change without notice. No warranty or guarantee is made regarding any particular area public school/school district or that any particular public school/school district will service any given community. Schools/school districts may change over time. Builder does not warrant the suitability of any trail for any use or for any person. Our name and the logos contained herein are registered trademarks of Tri Pointe Homes, Inc. and/or its subsidiaries. © 2023 Tri Pointe Homes, Inc. All rights reserved. For State Licensing and Notices, see <https://www.tripointehomes.com/statelicensenotices>.

Homes in this community are located near an airport and subject to aircraft overflights and noise due to aircraft. Contact Loudoun County Government to verify whether your home is located within the Airport Impact Overlay District and the regulations that apply.



# Hensley at Eisenhower Pointe



EISENHOWER AVENUE ROAD



Model



Life-changing by Design

The prices of our homes, included features, plans, specifications, promotions/incentives, neighborhood build-out and available locations are subject to change without notice. Stated dimensions, square footage and acreage are approximate and should not be used as a representation of any home's or homesite's precise or actual size, location or orientation. There is no guarantee that any particular homesite or home will be available. No information or material herein is to be construed to be an offer or solicitation for sale. A Broker/Agent must register their client in person on client's first visit at each community for a Broker/Agent to receive a commission or referral fee, if available. Not all features and options are available in all homes. Unless otherwise expressly stated, homes do not come with hardscape, landscape, or other decorator items. Any photographs or renderings used herein reflect artists' conceptions and are for illustrative purposes only. Community maps, illustrations, plans and/or amenities reflect our current vision and are subject to change without notice. Maps not to scale. Photographs or renderings of people do not depict or indicate any preference regarding race, religion, gender, sexual orientation, disability, familial status, or national origin. Some amenities may not yet be constructed. Builder reserves the right to change the size, design, configuration and location of amenities not yet constructed and does not warrant the suitability thereof for any use or for any person. There is no guarantee that any particular homesite, home or common area will offer a view or that any particular view will be preserved. Views may also be altered by subsequent development, construction, and landscaping growth. A link to a third party website does not imply endorsement of that site nor any ability to control that site's privacy practices. Marketing promotions/incentives, if any, are subject to conditions or restrictions and are subject to change without notice. No warranty or guarantee is made regarding any particular area public school/school district or that any particular public school/school district will service any given community. Schools/school districts may change over time. Builder does not warrant the suitability of any trail for any use or for any person. Our name and the logos contained herein are registered trademarks of Tri Pointe Homes, Inc. and/or its subsidiaries. © 2023 Tri Pointe Homes, Inc. All rights reserved. For State Licensing and Notices, see <https://www.tripointehomes.com/statelicensenotices>. 08/2023



Homes in this community are located near an airport and subject to aircraft overflights and noise due to aircraft. Contact Loudoun County Government to verify whether your home is located within the Airport Impact Overlay District and the regulations that apply.

# Hensley at Eisenhower Pointe Armistead Home Design

---

2,367 Sq Ft | 3 Bedrooms | 2-3 Full, 1 Half Bathrooms | 2-Car Garage

Life-changing by Design



# Armistead Home Design

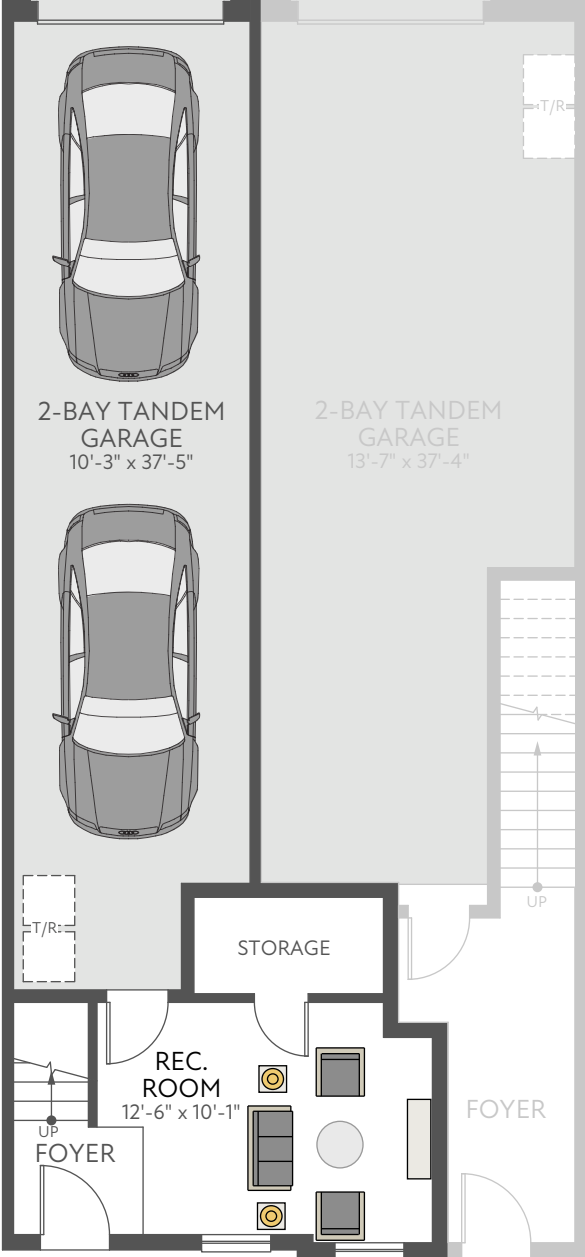
---

2,367 Sq Ft | 3 Bedrooms | 2-3 Full, 1 Half Bathrooms | 2-Car Garage



# Armistead Lower Level

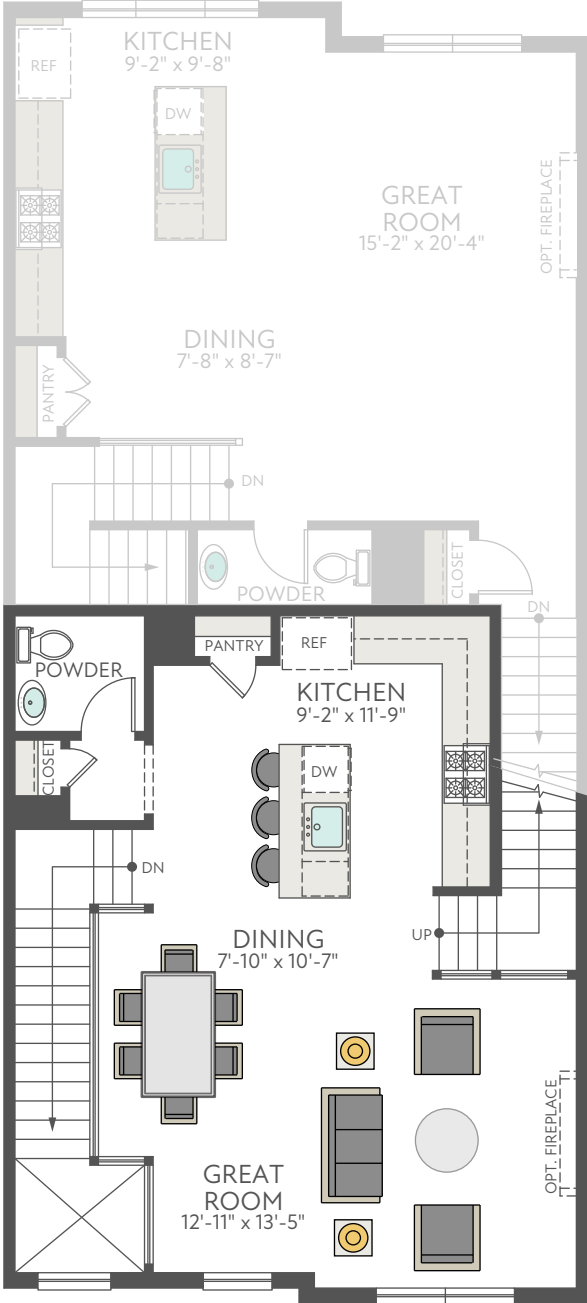
2,367 Sq Ft | 3 Bedrooms | 2-3 Full, 1 Half Bathrooms | 2-Car Garage



LOWER LEVEL

# Armistead First Floor

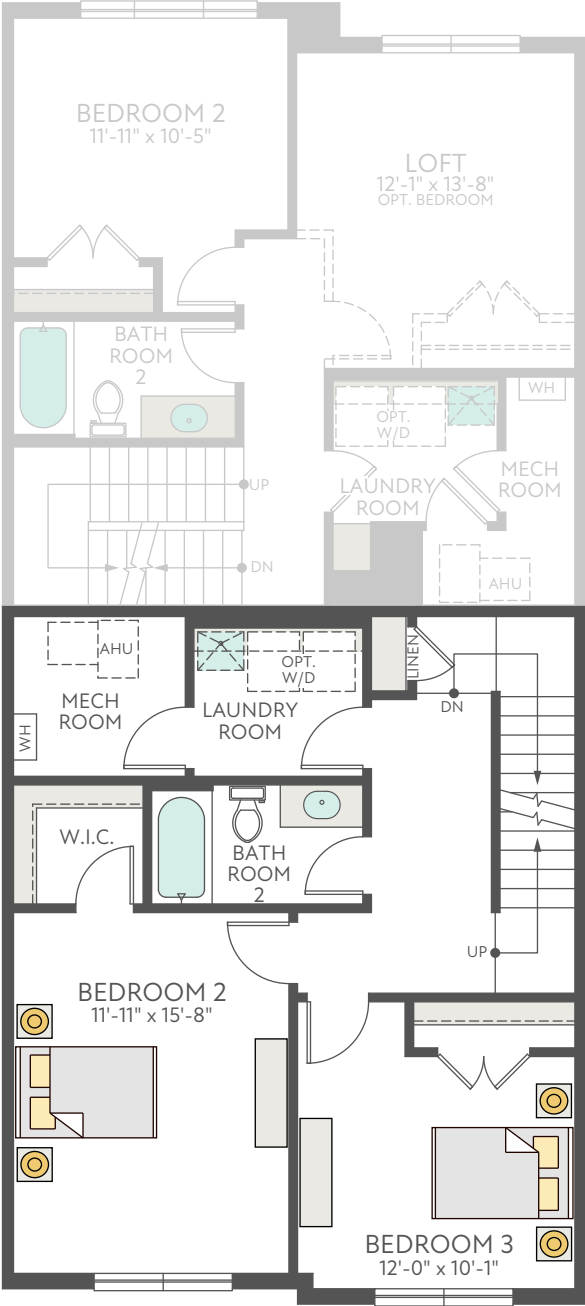
2,367 Sq Ft | 3 Bedrooms | 2-3 Full, 1 Half Bathrooms | 2-Car Garage



FIRST FLOOR

# Armistead **Second Floor**

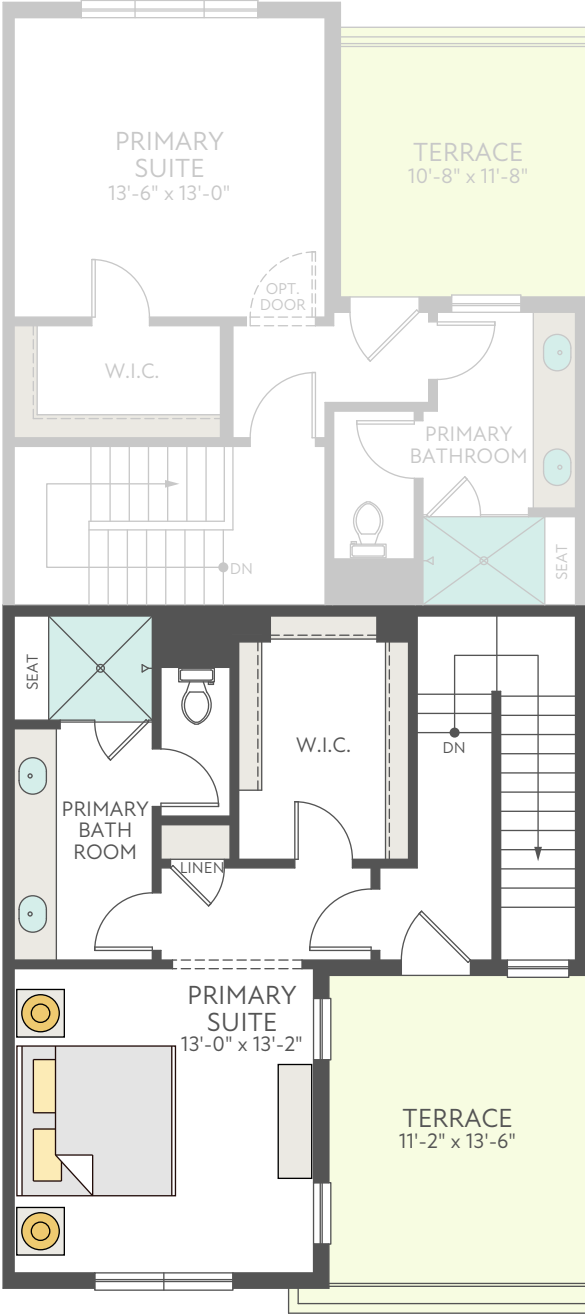
2,367 Sq Ft | 3 Bedrooms | 2-3 Full, 1 Half Bathrooms | 2-Car Garage



SECOND FLOOR

# Armistead Third Floor

2,367 Sq Ft | 3 Bedrooms | 2-3 Full, 1 Half Bathrooms | 2-Car Garage



THIRD FLOOR

# Hensley at Eisenhower Pointe Brenman Home Design

---

1,959 Sq Ft | 3 Bedrooms | 2 Full, 1 Half Bath | 2-Bay Garage

Life-changing by Design



# Brenman Home Design

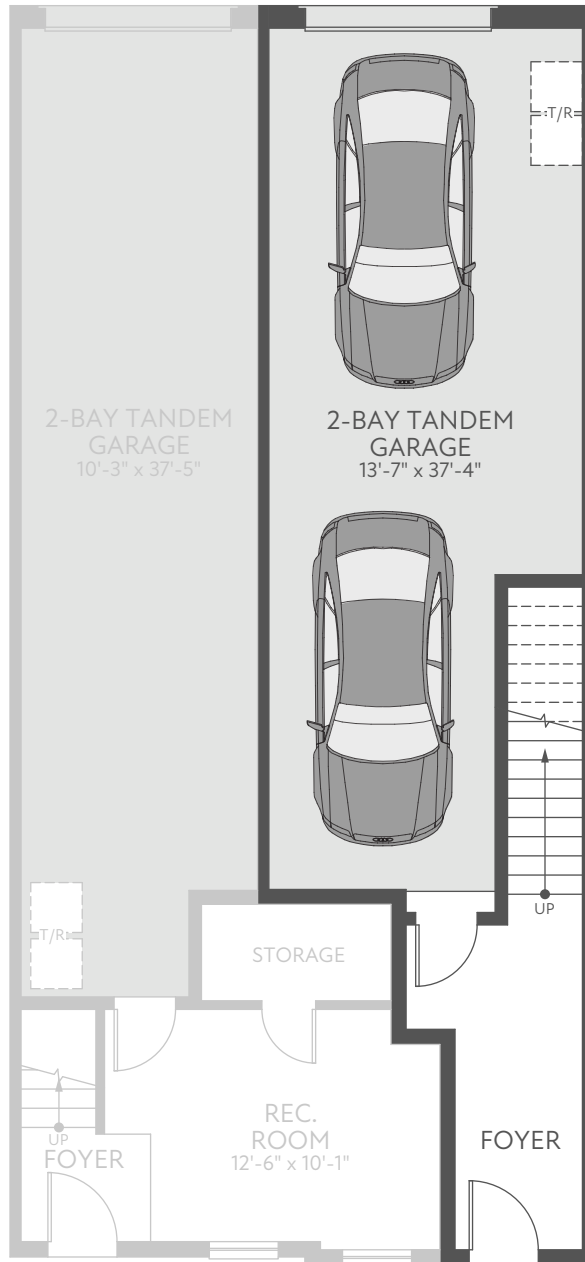
---

1,959 Sq Ft | 3 Bedrooms | 2 Full, 1 Half Bath | 2-Bay Garage



# Brenman Lower Level

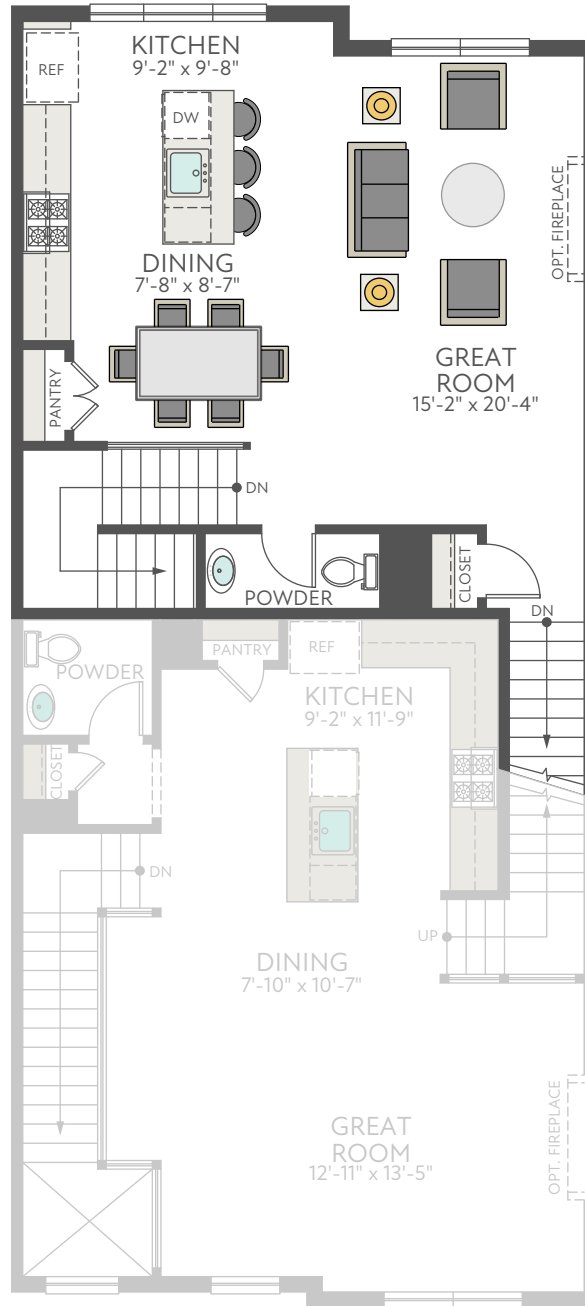
1,959 Sq Ft | 3 Bedrooms | 2 Full, 1 Half Bath | 2-Bay Garage



LOWER LEVEL

# Brenman First Floor

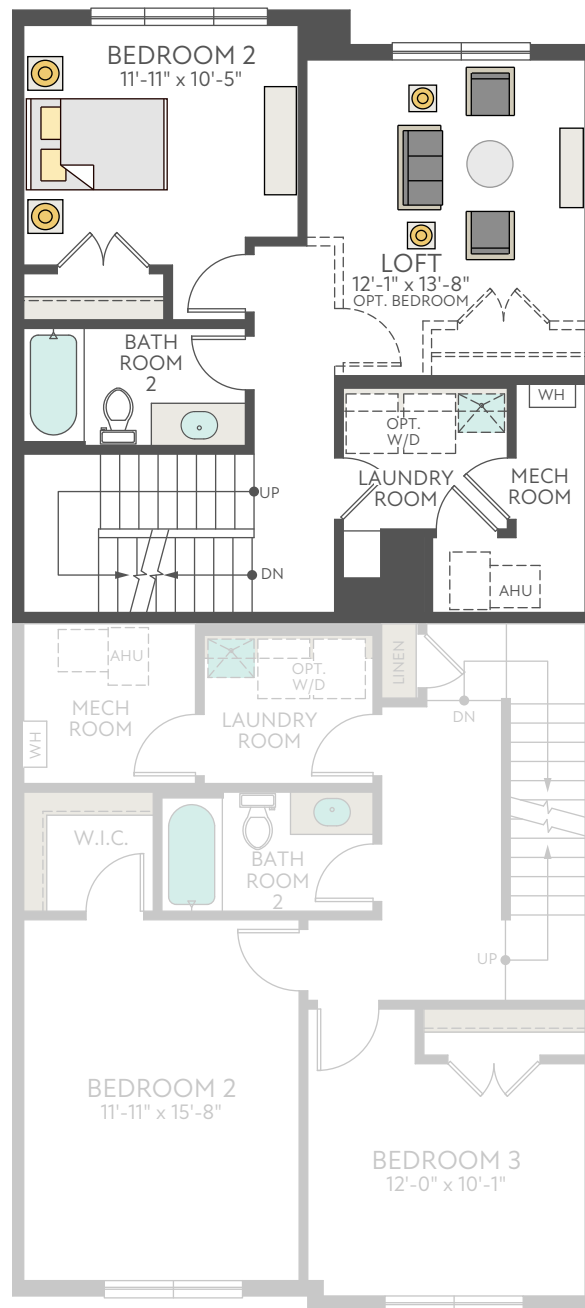
1,959 Sq Ft | 3 Bedrooms | 2 Full, 1 Half Bath | 2-Bay Garage



FIRST FLOOR

# Brenman Second Floor

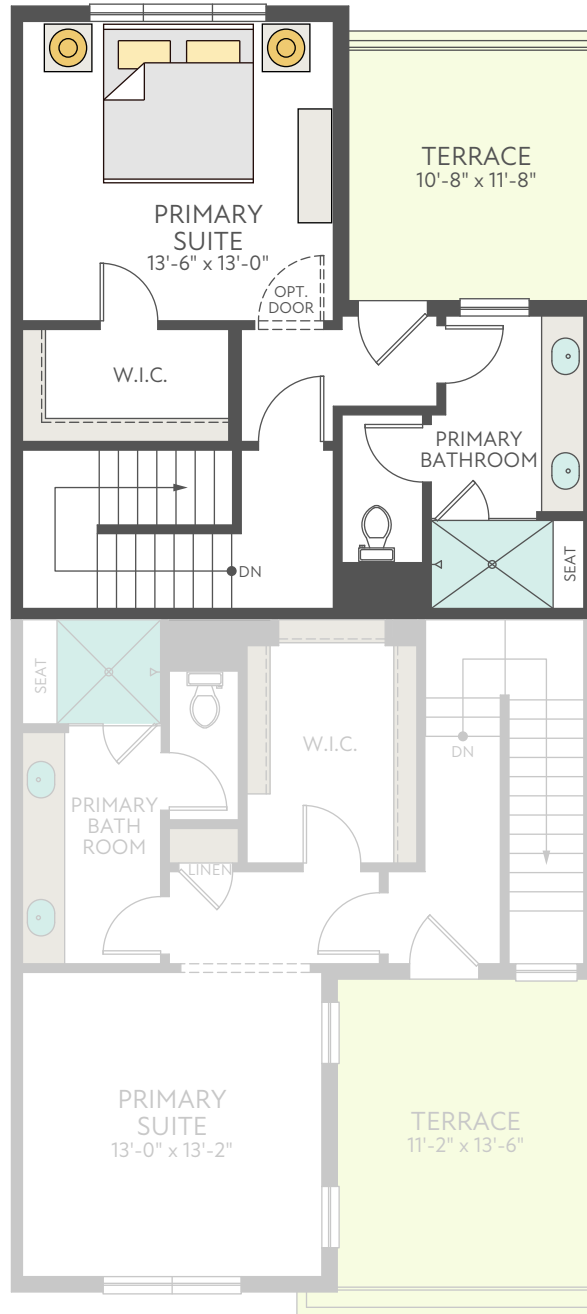
1,959 Sq Ft | 3 Bedrooms | 2 Full, 1 Half Bath | 2-Bay Garage



SECOND FLOOR

# Brenman Third Floor

1,959 Sq Ft | 3 Bedrooms | 2 Full, 1 Half Bath | 2-Bay Garage



THIRD FLOOR

## INCLUDED FEATURES

# Hensley at Eisenhower Pointe

### CURB APPEAL

- ▶ Modern architecture featuring mix of brick and vinyl siding exteriors (per plan)
- ▶ Therma Tru entry door with matte black hardware
- ▶ 2-bay garage with garage door opener (per plan)
- ▶ Brushed concrete leadwalks

### THE DETAILS

- ▶ Thoughtful designs with 9' ceilings
- ▶ Stained oak staircase from the lower level to the main living level
- ▶ Shaw Luxury Vinyl Plank flooring on the main living level, foyer and garage entry, mud room and laundry room
- ▶ Choice of 2-panel or 5-panel interior doors Schlage
- ▶ Plymouth knob satin chrome door hardware
- ▶ Ventilated white closet shelving

### BEAUTIFUL BATHROOMS & LAUNDRIES

- ▶ Primary Bath
  - Walk-in shower with Delta polished chrome fixture
  - 12"x12" Ceramic tile floor and 6"x6" wall tile to ceiling
  - Aristokraft cabinets with choice of finishes
  - Vanities with double sinks & granite countertops
  - Delta chrome fixtures
  - Elongated toilet
- ▶ Powder Room
  - Pedestal sink with Delta chrome fixture
  - Elongated toilet
  - Shaw Luxury Vinyl Plank flooring
- ▶ Secondary Baths
  - Aristokraft cabinets with choice of finishes
  - Vanity with cultured marble top & Delta chrome fixtures
  - Elongated toilet
  - 6"x6" Ceramic tile floors and 6"x6" wall
- ▶ Laundry room on bedroom level

### KITCHEN ENVY

- ▶ 42" designer Aristokraft cabinets with choice of finishes
- ▶ Granite countertops with choice of colors
- ▶ KitchenAid® Stainless Steel appliances including built-in microwave/hood, ENERGY STAR dishwasher, side-by-side refrigerator and gas range
- ▶ Stainless steel undermount kitchen sink
- ▶ Delta Essa Touch faucet

### DISTINCTIVELY INTELLIGENT

- ▶ HomeSmart® package includes the following devices:
  - Mesh network
  - Cat6 wiring
  - Schlage Encode front door lock
  - Ring Pro doorbell
  - Liftmaster® garage door opener with two remotes
  - 2 Leviton® WiFi smart switches (front door & foyer)
  - Ecobee3 Lite thermostat (per plan)

### ENERGY AND EARTH FRIENDLY

- ▶ MI white Low-e vinyl windows
- ▶ Energy Efficient Carrier® HVAC with gas heat and humidifier
- ▶ Rinnai Tankless Water Heater
- ▶ MERV 13 air filter
- ▶ Whole home surge protection
- ▶ LED surface mount lights
- ▶ Electrical conduit rough in for future car charger

Life-changing by Design



The prices of our homes, included features, plans, specifications, promotions/incentives, neighborhood build-out and available locations are subject to change without notice. Stated dimensions, square footage and acreage are approximate and should not be used as a representation of any home's or homesite's precise or actual size, location or orientation. There is no guarantee that any particular homesite or home will be available. No information or material herein is to be construed to be an offer or solicitation for sale. A Broker/Agent must register their client in person on client's first visit at each community for a Broker/Agent to receive a commission or referral fee, if available. Not all features and options are available in all homes. Unless otherwise expressly stated, homes do not come with hardscape, landscape, or other decorator items. Any photographs or renderings used herein reflect artists' conceptions and are for illustrative purposes only. Community maps, illustrations, plans and/or amenities reflect our current vision and are subject to change without notice. Maps not to scale. Photographs or renderings of people do not depict or indicate any preference regarding race, religion, gender, sexual orientation, disability, familial status, or national origin. Some amenities may not yet be constructed. Builder reserves the right to change the size, design, configuration and location of amenities not yet constructed and does not warrant the suitability thereof for any use or for any person. There is no guarantee that any particular homesite, home or common area will offer a view or that any particular view will be preserved. Views may also be altered by subsequent development, construction, and landscaping growth. A link to a third party website does not imply endorsement of that site nor any ability to control that site's privacy practices. Marketing promotions/incentives, if any, are subject to conditions or restrictions and are subject to change without notice. No warranty or guarantee is made regarding any particular area public school/school district or that any particular public school/school district will service any given community. Schools/school districts may change over time. Builder does not warrant the suitability of any trail for any use or for any person. Our name and the logos contained herein are registered trademarks of Tri Pointe Homes, Inc. and/or its subsidiaries. © 2021 Tri Pointe Homes, Inc. All rights reserved. For State Licensing and Notices, see <https://www.tripointehomes.com/statelicensings-notices>. 11/10/2020





The prices of our homes, included features, plans, specifications, promotions/incentives, neighborhood build-out and available locations are subject to change without notice. Stated dimensions, square footage and acreage are approximate and should not be used as a representation of any home's or homesite's precise or actual size, location or orientation. There is no guarantee that any particular homesite or home will be available. No information or material herein is to be construed to be an offer or solicitation for sale. A Broker/Agent must register their client in person on client's first visit at each community for a Broker/Agent to receive a commission or referral fee, if available. Not all features and options are available in all homes. Unless otherwise expressly stated, homes do not come with hardscape, landscape, or other decorator items. Any photographs or renderings used herein reflect artists' conceptions and are for illustrative purposes only. Community maps, illustrations, plans and/or amenities reflect our current vision and are subject to change without notice. Maps not to scale. Photographs or renderings of people do not depict or indicate any preference regarding race, religion, gender, sexual orientation, disability, familial status, or national origin. Some amenities may not yet be constructed. Builder reserves the right to change the size, design, configuration and location of amenities not yet constructed and does not warrant the suitability thereof for any use or for any person. There is no guarantee that any particular homesite, home or common area will offer a view or that any particular view will be preserved. Views may also be altered by subsequent development, construction, and landscaping growth. A link to a third party website does not imply endorsement of that site nor any ability to control that site's privacy practices. Marketing promotions/incentives, if any, are subject to conditions or restrictions and are subject to change without notice. No warranty or guarantee is made regarding any particular area public school/school district or that any particular public school/school district will service any given community. Schools/school districts may change over time. Builder does not warrant the suitability of any trail for any use or for any person. Our name and the logos contained herein are registered trademarks of Tri Pointe Homes, Inc. and/or its subsidiaries. © 2023 Tri Pointe Homes, Inc. All rights reserved. For State Licensing and Notices, see <https://www.tripointehomes.com/statelicensenotices>. 08/2023



Homes in this community are located near an airport and subject to aircraft overflights and noise due to aircraft. Contact Loudoun County Government to verify whether your home is located within the Airport Impact Overlay District and the regulations that apply.