

# Painted Prairie Plan 2804

---

2,006 - 2,933 Sq. Ft. | Two-Story | 3 - 4 Bedrooms | 3.5 - 1.5 Baths | 2-Bay Garage

Life-changing by Design



# Plan 2804 Exteriors

---

2,006 - 2,933 Sq. Ft. | Two-Story | 3 - 4 Bedrooms | 3.5 - 1.5 Baths | 2-Bay Garage



Farm House (A)



Prairie Bungalow (B)

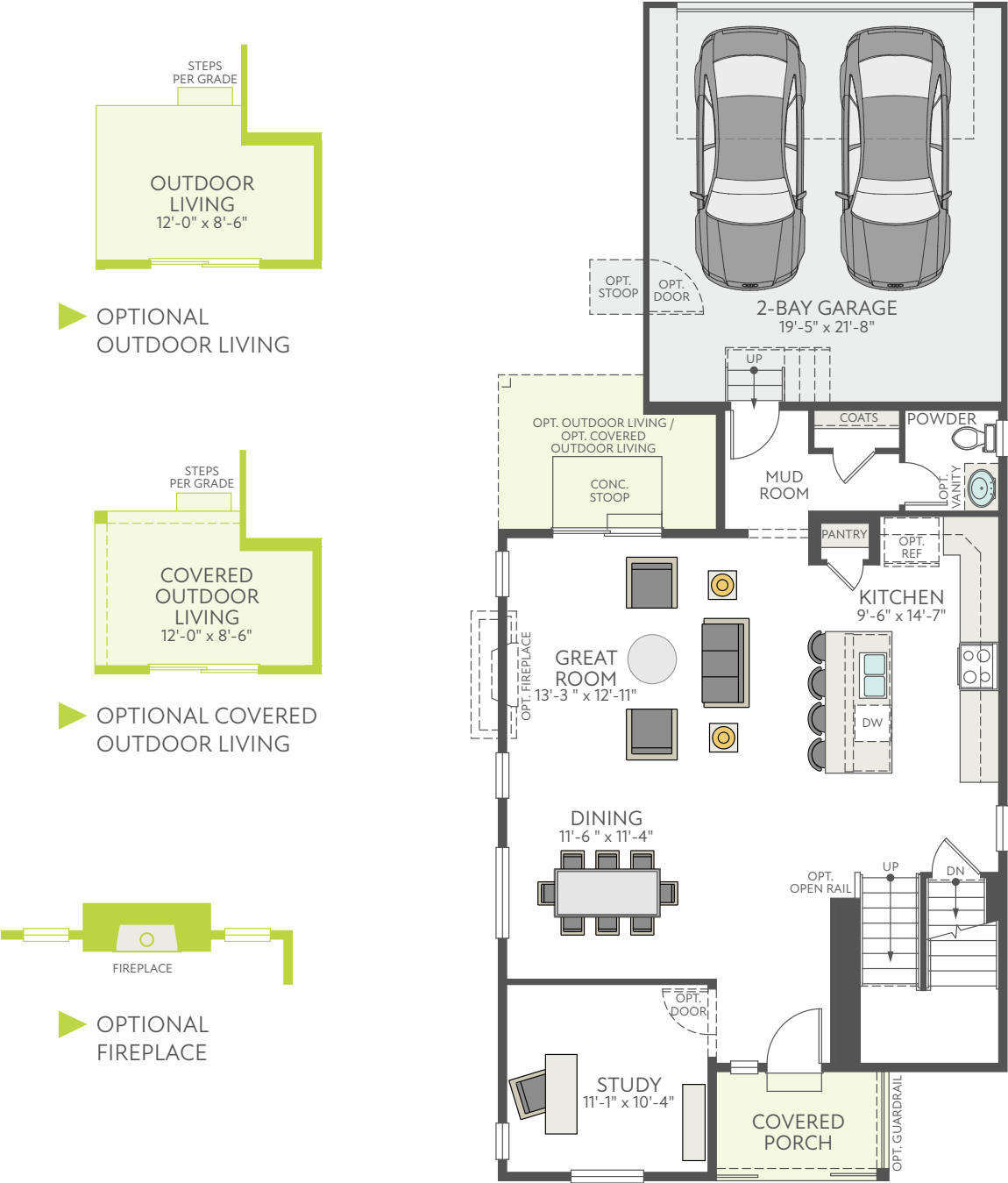


Modern Prairie (C)

# Plan 2804 First Floor

2,006 - 2,933 Sq. Ft. | Two-Story | 3 - 4 Bedrooms | 3.5 - 1.5 Baths | 2-Bay Garage

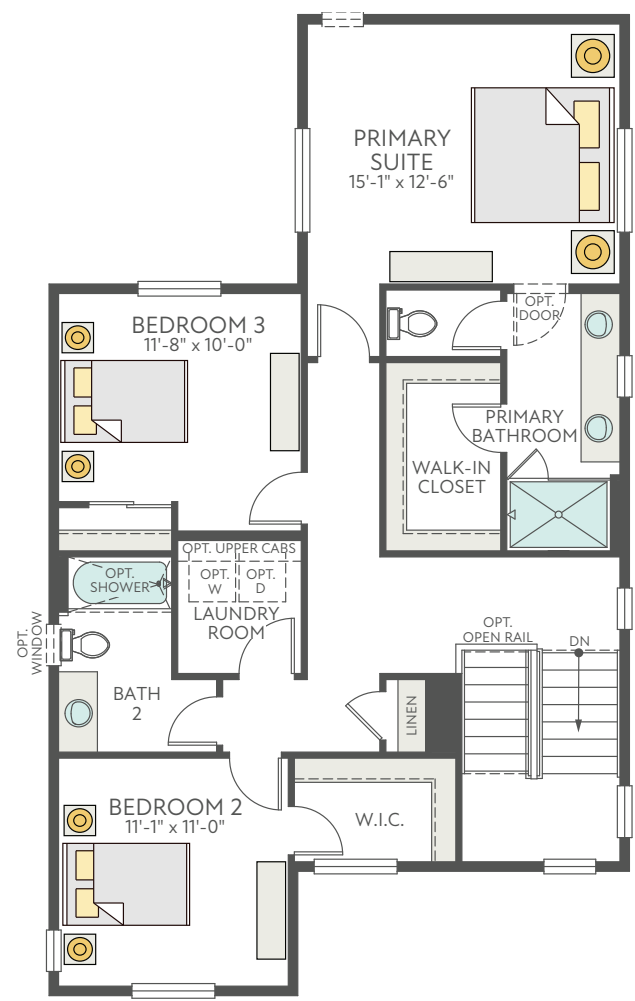
## FIRST FLOOR



# Plan 2804 Second Floor

2,006 - 2,933 Sq. Ft. | Two-Story | 3 - 4 Bedrooms | 3.5 - 1.5 Baths | 2-Bay Garage

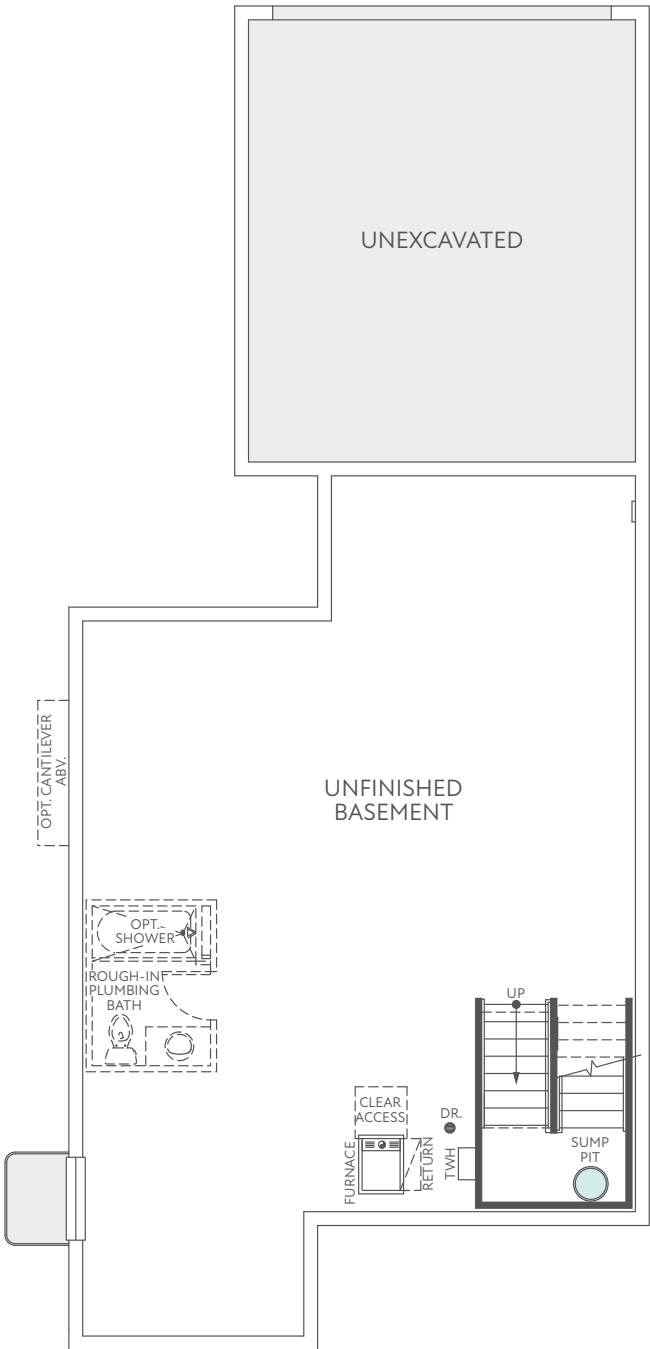
## SECOND FLOOR



# Plan 2804 Basement

2,006 - 2,933 Sq. Ft. | Two-Story | 3 - 4 Bedrooms | 3.5 - 1.5 Baths | 2-Bay Garage

FULL UNFINISHED BASEMENT



OPTIONAL FINISHED BASEMENT

