

Painted Prairie Plan 2802

1,578 - 2,254 Sq. Ft. | Two-Story | 3 - 4 Bedrooms | 2.5 - 3.5 Baths | 2-Bay Garage

Life-changing by Design



Plan 2802 Exteriors

1,578 - 2,254 Sq. Ft. | Two-Story | 3 - 4 Bedrooms | 2.5 - 3.5 Baths | 2-Bay Garage



Farm House (A)



Prairie Bungalow (B)

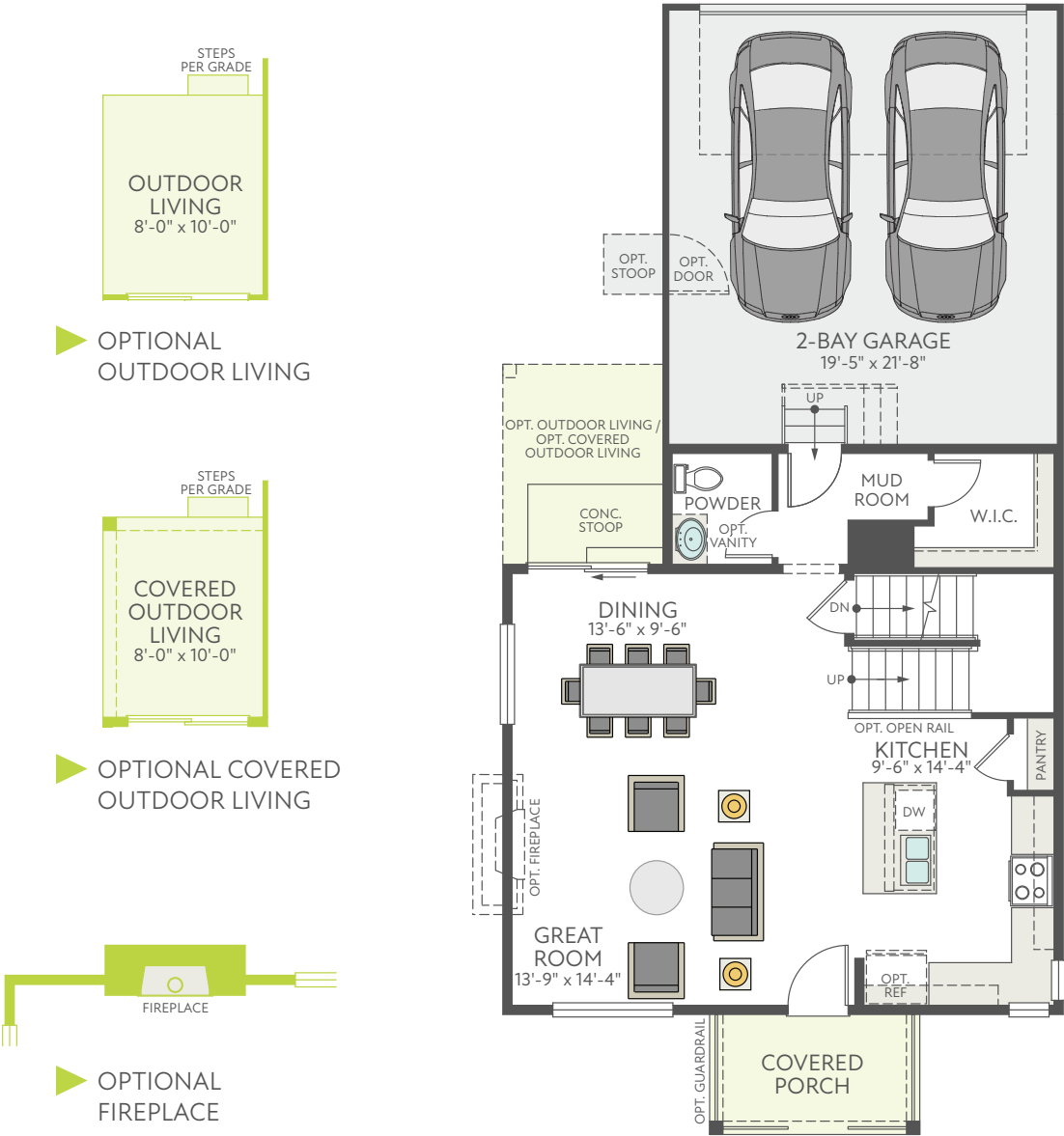


Modern Prairie (C)

Plan 2802 First Floor

1,578 - 2,254 Sq. Ft. | Two-Story | 3 - 4 Bedrooms | 2.5 - 3.5 Baths | 2-Bay Garage

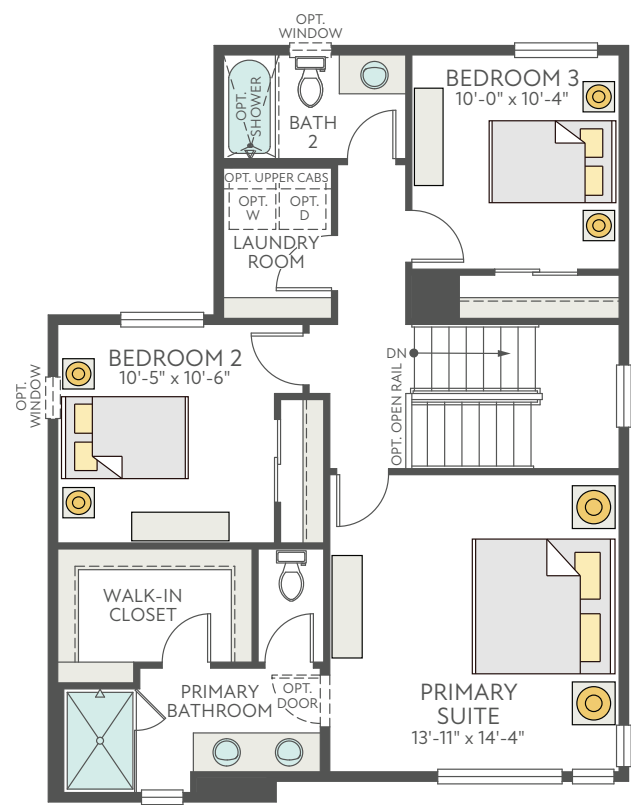
FIRST FLOOR



Plan 2802 Second Floor

1,578 - 2,254 Sq. Ft. | Two-Story | 3 - 4 Bedrooms | 2.5 - 3.5 Baths | 2-Bay Garage

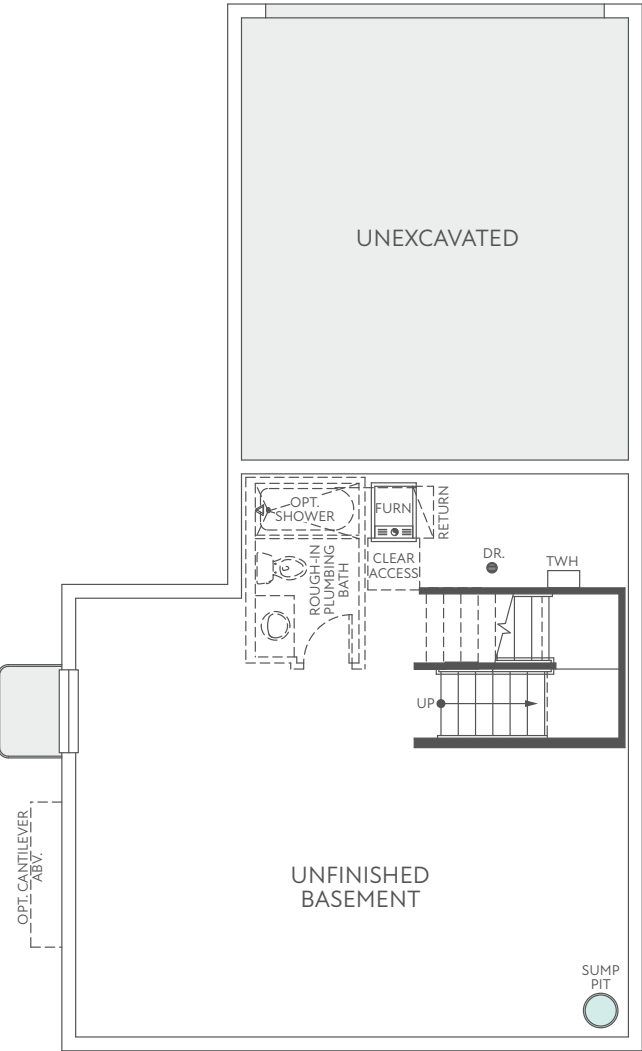
SECOND FLOOR



Plan 2802 Basement

1,578 - 2,254 Sq. Ft. | Two-Story | 3 - 4 Bedrooms | 2.5 - 3.5 Baths | 2-Bay Garage

FULL UNFINISHED BASEMENT



OPTIONAL FINISHED BASEMENT

