

Painted Prairie Plan 2805

2,155 - 3,120 Sq. Ft. | Two-Story | 3 - 5 Bedrooms | 2.5 - 3.5 Baths | 2-Bay Garage

Life-changing by Design



Plan 2805 Exteriors

2,155 - 3,120 Sq. Ft. | Two-Story | 3 - 5 Bedrooms | 2.5 - 3.5 Baths | 2-Bay Garage



Farm House (A)



Prairie Bungalow (B)



Modern Prairie (C)

Plan 2805 First Floor

2,155 - 3,120 Sq. Ft. | Two-Story | 3 - 5 Bedrooms | 2.5 - 3.5 Baths | 2-Bay Garage

FIRST FLOOR



► OPTIONAL OUTDOOR
LIVING W/OPTIONAL
WINDOW



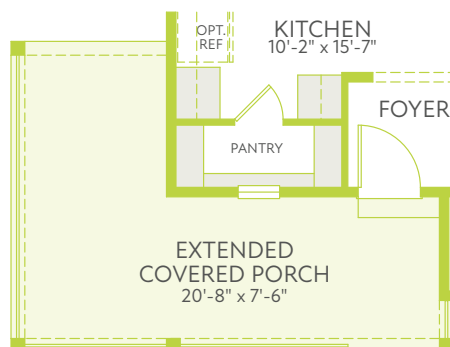
► OPTIONAL COVERED
OUTDOOR LIVING W/
OPTIONAL WINDOW



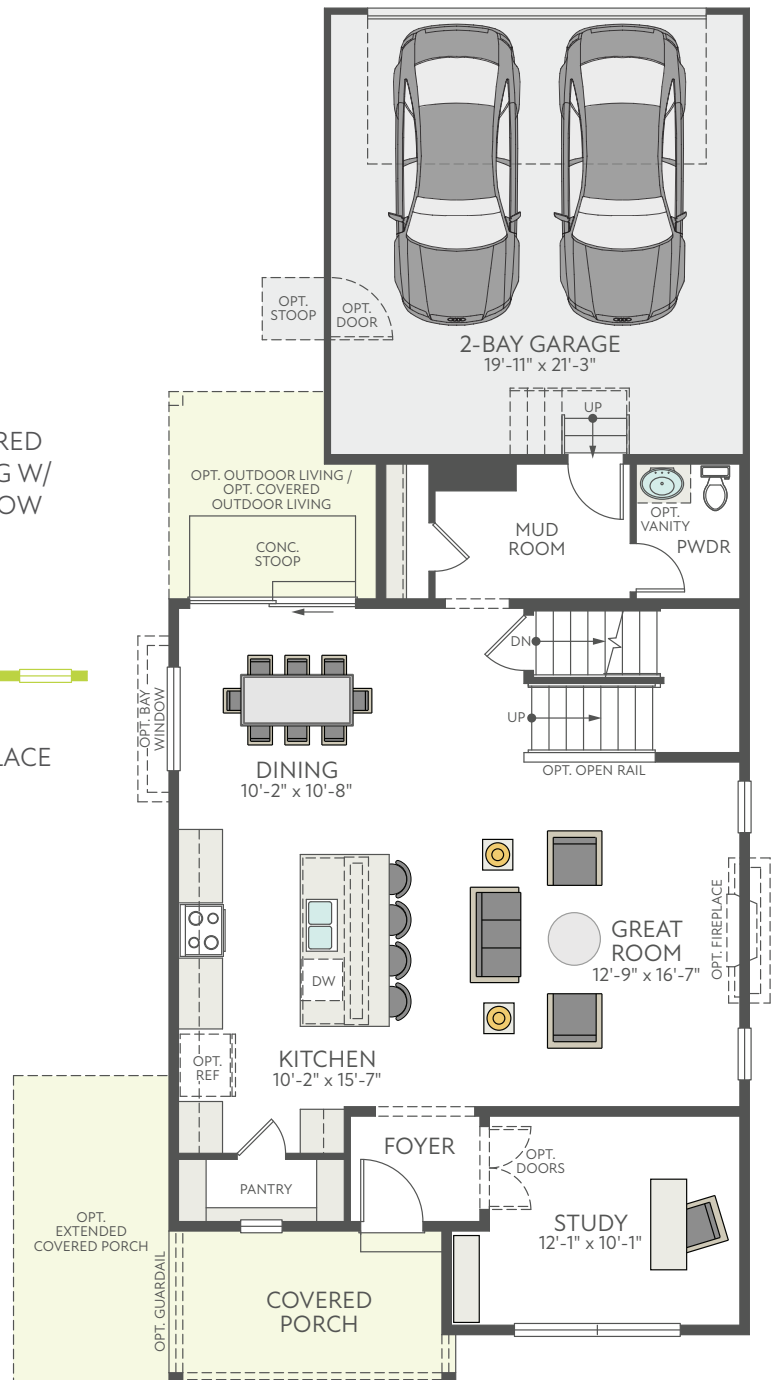
► OPTIONAL
CONC. STOOP



► OPTIONAL FIREPLACE



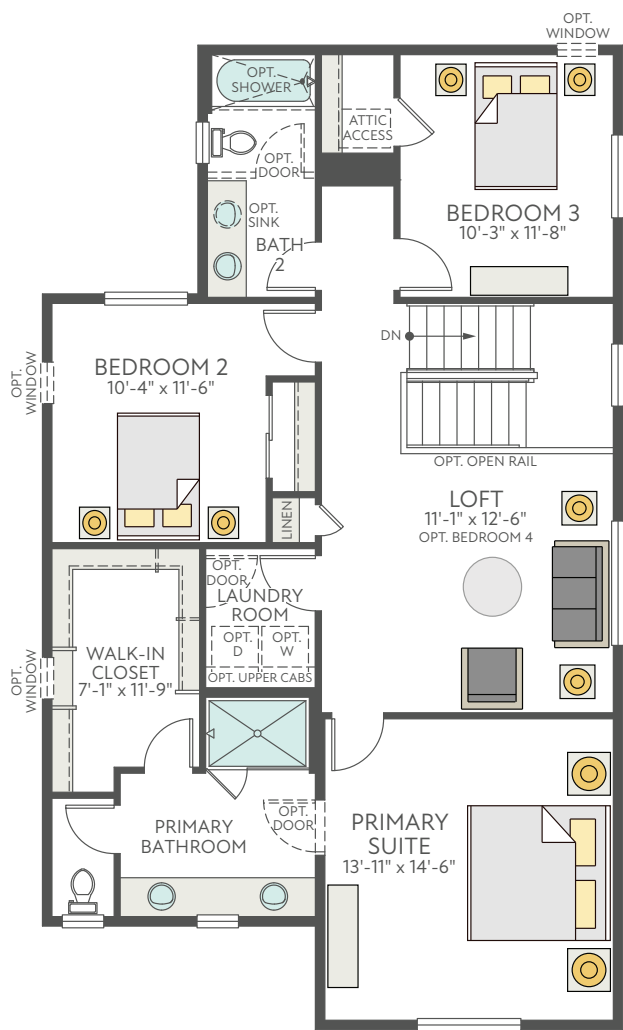
► OPTIONAL EXTENDED COVERED PORCH



Plan 2805 Second Floor

2,155 - 3,120 Sq. Ft. | Two-Story | 3 - 5 Bedrooms | 2.5 - 3.5 Baths | 2-Bay Garage

SECOND FLOOR

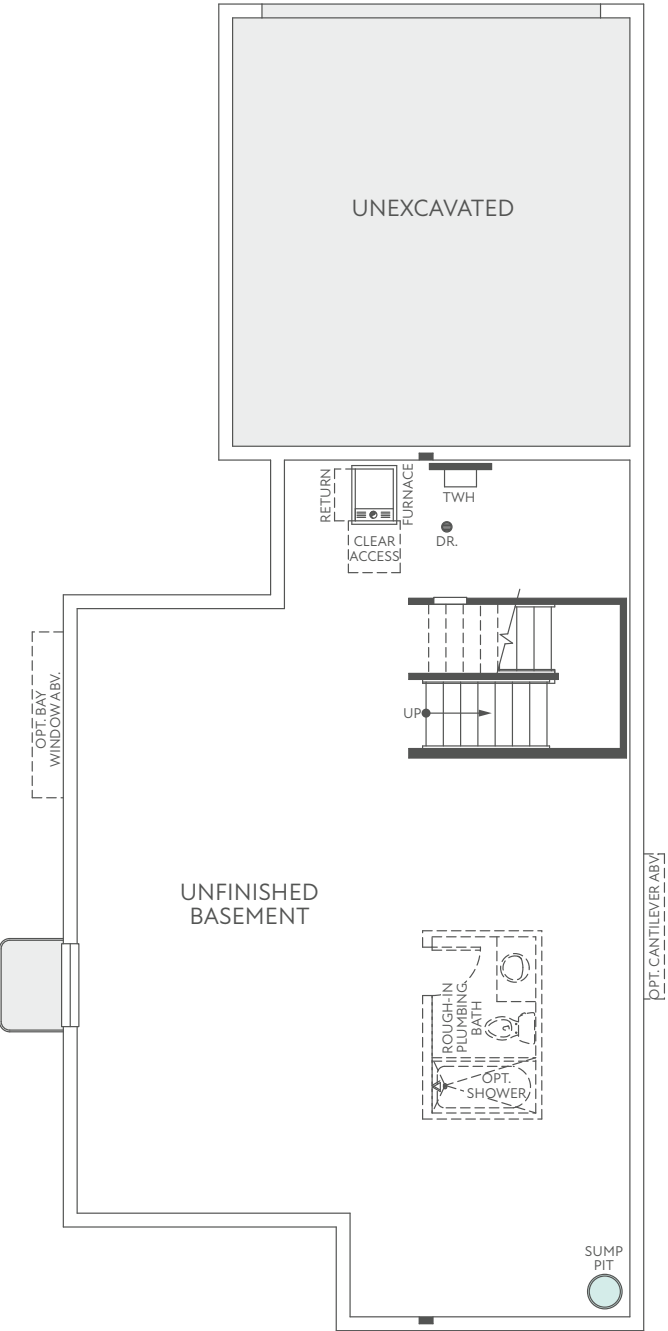


OPTIONAL
BEDROOM 4

Plan 2805 Basement

2,155 - 3,120 Sq. Ft. | Two-Story | 3 - 5 Bedrooms | 2.5 - 3.5 Baths | 2-Bay Garage

FULL UNFINISHED BASEMENT



OPTIONAL FINISHED BASEMENT

