

Aspen Home Design

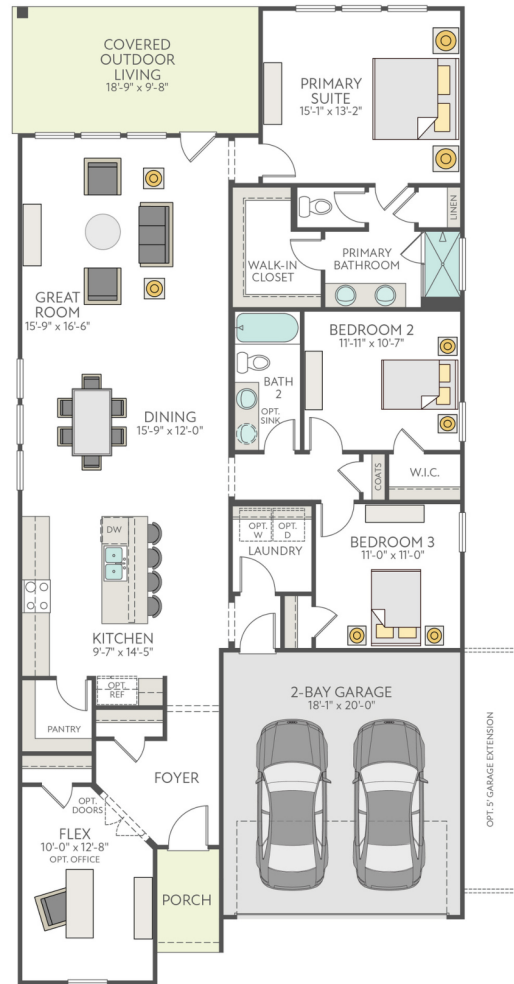
1,903 Sq. Ft. | 3 Bed | 2 Bath | 2 Bay Garage | + Flex



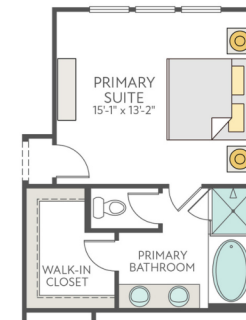
EXTERIOR STYLE A



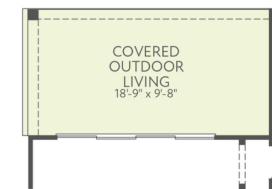
EXTERIOR STYLE B



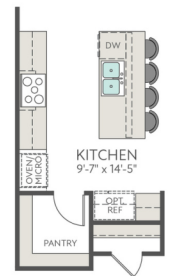
FIRST FLOOR



OPT. PRIMARY BATH TUB



OPT. SLIDING GLASS DOOR



OPT. GOURMET KITCHEN

Life-changing by Design™

The prices of our homes, included features, plans, specifications, promotions/incentives, neighborhood build-out and available locations are subject to change without notice. Stated dimensions, square footage and acreage are approximate and should not be used as a representation of any home's or homesite's precise or actual size, location or orientation. There is no guarantee that any particular homesite or home will be available. No information or material herein is to be construed to be an offer or solicitation for sale. A Broker/Agent must register their client in person on client's first visit at each community for a Broker/Agent to receive a commission or referral fee, if available. Not all features and options are available in all homes. Unless otherwise expressly stated, homes do not come with hardscape, landscape, or other decorator items. Any photographs or renderings used herein reflect artists' conceptions and are for illustrative purposes only. Community maps, illustrations, plans and/or amenities reflect our current vision and are subject to change without notice. Maps not to scale. Our name and the logos contained herein are registered trademarks of Tri Pointe Homes, Inc. and/or its subsidiaries. © 2025 Tri Pointe Homes Texas, Inc. All rights reserved. 🏡