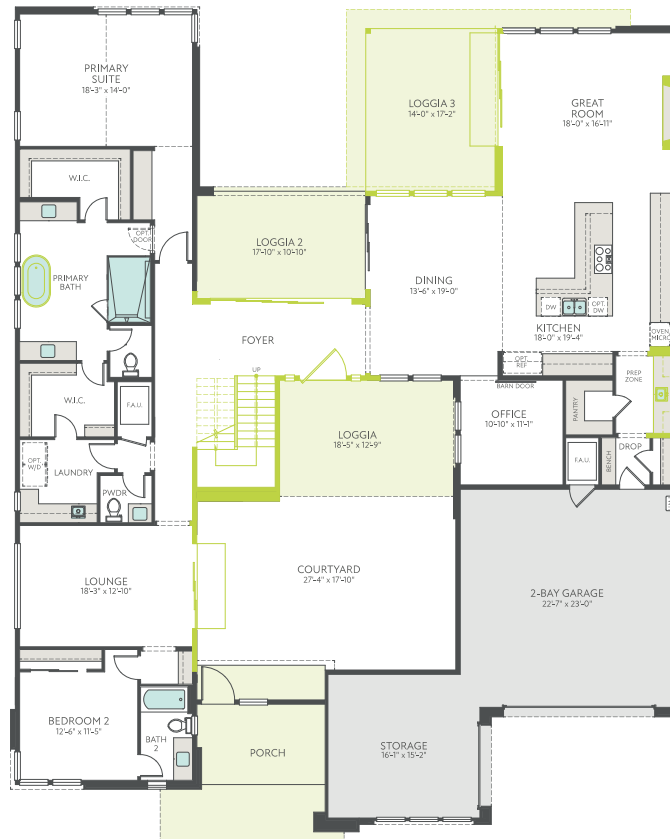


Tri Pointe Homes - Carlisle Ridge - Plan 3

4,147 Square Feet 4 Bedrooms, 4.5 Baths, 2 Car Garage

First Floor



tripointehomes.com

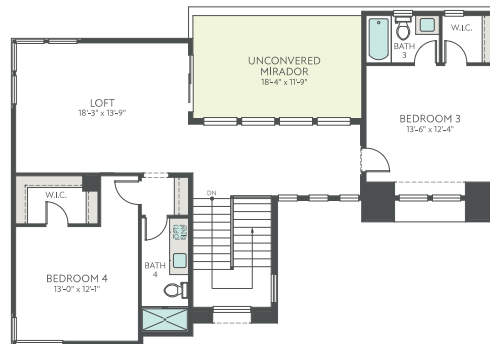
The prices of our homes, included features, plans, specifications, promotions/incentives, neighborhood build-out, and available locations are subject to change without notice. Stated dimensions, square footage, and acreage are approximate and should not be used as a representation of any home's or homesite's precise or actual size, location, or orientation. There is no guarantee that any particular homesite or home will be available. No information or material herein is to be construed to be an offer or solicitation for sale. A Broker/Agent must register their client in person on the client's first visit at each community for a Broker/Agent to receive a commission or referral fee, if available. Not all features and options are available in all homes. Unless otherwise expressly stated, homes do not come with hardscape, landscape, or other decorator items. Any photographs or renderings used herein reflect artists' conceptions and are for illustrative purposes only. Community maps, illustrations, plans, and/or amenities reflect our current vision and are subject to change without notice. Maps not to scale. © 2023 Tri Pointe Homes, Inc. All rights reserved. tripointehomes.com

tri pointe
HOMES

Tri Pointe Homes - Carlisle Ridge - Plan 3

4,147 Square Feet 4 Bedrooms, 4.5 Baths, 2 Car Garage

Second Floor



tripointehomes.com

The prices of our homes, included features, plans, specifications, promotions/incentives, neighborhood build-out, and available locations are subject to change without notice. Stated dimensions, square footage, and acreage are approximate and should not be used as a representation of any home's or homesite's precise or actual size, location, or orientation. There is no guarantee that any particular homesite or home will be available. No information or material herein is to be construed to be an offer or solicitation for sale. A Broker/Agent must register their client in person on the client's first visit at each community for a Broker/Agent to receive a commission or referral fee, if available. Not all features and options are available in all homes. Unless otherwise expressly stated, homes do not come with hardscape, landscape, or other decorator items. Any photographs or renderings used herein reflect artists' conceptions and are for illustrative purposes only. Community maps, illustrations, plans, and/or amenities reflect our current vision and are subject to change without notice. Maps not to scale. © 2023 Tri Pointe Homes, Inc. All rights reserved. tripointehomes.com

tri pointe
HOMES

Tri Pointe Homes - Carlisle Ridge - Plan 3

4,147 Square Feet 4 Bedrooms, 4.5 Baths, 2 Car Garage



tripointehomes.com

The prices of our homes, included features, plans, specifications, promotions/incentives, neighborhood build-out, and available locations are subject to change without notice. Stated dimensions, square footage, and acreage are approximate and should not be used as a representation of any home's or homesite's precise or actual size, location, or orientation. There is no guarantee that any particular homesite or home will be available. No information or material herein is to be construed to be an offer or solicitation for sale. A Broker/Agent must register their client in person on the client's first visit at each community for a Broker/Agent to receive a commission or referral fee, if available. Not all features and options are available in all homes. Unless otherwise expressly stated, homes do not come with hardscape, landscape, or other decorator items. Any photographs or renderings used herein reflect artists' conceptions and are for illustrative purposes only. Community maps, illustrations, plans, and/or amenities reflect our current vision and are subject to change without notice. Maps not to scale. © 2023 Tri Pointe Homes, Inc. All rights reserved. tripointehomes.com

tri pointe
HOMES

Tri Pointe Homes - Carlisle Ridge - Plan 3

4,147 Square Feet 4 Bedrooms, 4.5 Baths, 2 Car Garage

Selected Options

First Floor Options

Glass Pivot Entry Door
Stacking Glass Door at Entry
Floating Stairs
Loggia 3 at Great Room
78" Electric Fireplace
Stacking Glass Door at Lounge
Freestanding Tub at Primary Bath
Sliding Glass Door at Great Room
Sink at Prep Zone

Exterior Style Options

Exterior Style A

tripointehomes.com

The prices of our homes, included features, plans, specifications, promotions/incentives, neighborhood build-out, and available locations are subject to change without notice. Stated dimensions, square footage, and acreage are approximate and should not be used as a representation of any home's or homesite's precise or actual size, location, or orientation. There is no guarantee that any particular homesite or home will be available. No information or material herein is to be construed to be an offer or solicitation for sale. A Broker/Agent must register their client in person on the client's first visit at each community for a Broker/Agent to receive a commission or referral fee, if available. Not all features and options are available in all homes. Unless otherwise expressly stated, homes do not come with hardscape, landscape, or other decorator items. Any photographs or renderings used herein reflect artists' conceptions and are for illustrative purposes only. Community maps, illustrations, plans, and/or amenities reflect our current vision and are subject to change without notice. Maps not to scale. © 2023 Tri Pointe Homes, Inc. All rights reserved. tripointehomes.com



Tri Pointe Homes - Carlisle Ridge - Plan 3

4,147 Square Feet 4 Bedrooms, 4.5 Baths, 2 Car Garage

Carlisle Ridge - Plan 3

4 Bedrooms, 4.5 Baths, 2 Car Garage

4,147 Square Feet

\$1,750,000.00

| | |
|------------------------------------|-------------|
| • Glass Pivot Entry Door | \$17,281.00 |
| • Stacking Glass Door at Entry | \$8,470.00 |
| • Floating Stairs | \$45,932.00 |
| • Loggia 3 at Great Room | \$15,858.00 |
| • 78" Electric Fireplace | \$5,579.00 |
| • Stacking Glass Door at Lounge | \$8,330.00 |
| • Freestanding Tub at Primary Bath | \$13,563.00 |
| • Sliding Glass Door at Great Room | \$6,367.00 |
| • Sink at Prep Zone | \$3,877.00 |
| • Exterior Style A | \$0.00 |

\$125,257.00

\$1,875,257.00

tripointehomes.com

The prices of our homes, included features, plans, specifications, promotions/incentives, neighborhood build-out, and available locations are subject to change without notice. Stated dimensions, square footage, and acreage are approximate and should not be used as a representation of any home's or homesite's precise or actual size, location, or orientation. There is no guarantee that any particular homesite or home will be available. No information or material herein is to be construed to be an offer or solicitation for sale. A Broker/Agent must register their client in person on the client's first visit at each community for a Broker/Agent to receive a commission or referral fee, if available. Not all features and options are available in all homes. Unless otherwise expressly stated, homes do not come with hardscape, landscape, or other decorator items. Any photographs or renderings used herein reflect artists' conceptions and are for illustrative purposes only. Community maps, illustrations, plans, and/or amenities reflect our current vision and are subject to change without notice. Maps not to scale. © 2023 Tri Pointe Homes, Inc. All rights reserved. tripointehomes.com

