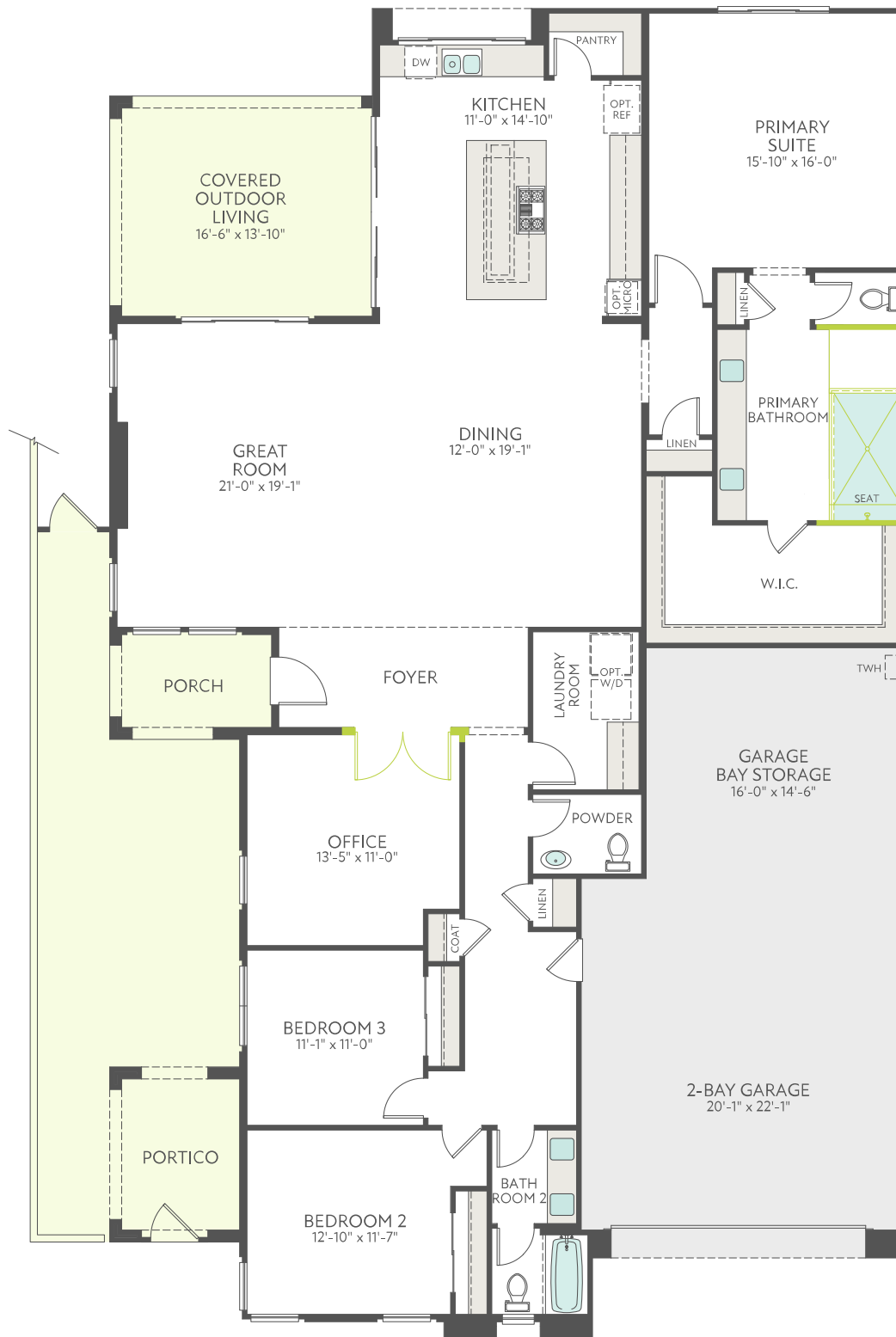


Tri Pointe Homes - Alpine Ridge Plan 2

2,623 Square Feet 3 Bedrooms, 2.5 Baths, 2 Car Garage

First Floor



[tripointehomes.com](https://www.tripointehomes.com)

The prices of our homes, included features, plans, specifications, promotions/incentives, neighborhood build-out, and available locations are subject to change without notice. Stated dimensions, square footage, and acreage are approximate and should not be used as a representation of any home's or homesite's precise or actual size, location, or orientation. There is no guarantee that any particular homesite or home will be available. No information or material herein is to be construed to be an offer or solicitation for sale. A Broker/Agent must register their client in person on the client's first visit at each community for a Broker/Agent to receive a commission or referral fee, if available. Not all features and options are available in all homes. Unless otherwise expressly stated, homes do not come with hardscape, landscape, or other decorator items. Any photographs or renderings used herein reflect artists' conceptions and are for illustrative purposes only. Community maps, illustrations, plans, and/or amenities reflect our current vision and are subject to change without notice. Maps not to scale. © 2023 Tri Pointe Homes, Inc. All rights reserved. [tripointehomes.com](https://www.tripointehomes.com)

tri pointe
HOMES

Tri Pointe Homes - Alpine Ridge Plan 2

2,623 Square Feet 3 Bedrooms, 2.5 Baths, 2 Car Garage



[tripointehomes.com](https://www.tripointehomes.com)

The prices of our homes, included features, plans, specifications, promotions/incentives, neighborhood build-out, and available locations are subject to change without notice. Stated dimensions, square footage, and acreage are approximate and should not be used as a representation of any home's or homesite's precise or actual size, location, or orientation. There is no guarantee that any particular homesite or home will be available. No information or material herein is to be construed to be an offer or solicitation for sale. A Broker/Agent must register their client in person on the client's first visit at each community for a Broker/Agent to receive a commission or referral fee, if available. Not all features and options are available in all homes. Unless otherwise expressly stated, homes do not come with hardscape, landscape, or other decorator items. Any photographs or renderings used herein reflect artists' conceptions and are for illustrative purposes only. Community maps, illustrations, plans, and/or amenities reflect our current vision and are subject to change without notice. Maps not to scale. © 2023 Tri Pointe Homes, Inc. All rights reserved. [tripointehomes.com](https://www.tripointehomes.com)

tri pointe
HOMES

Tri Pointe Homes - Alpine Ridge Plan 2

2,623 Square Feet 3 Bedrooms, 2.5 Baths, 2 Car Garage

Selected Options

First Floor Options

Office Double Entry Doors

Primary Bath Spa Shower

Exterior Style Options

Exterior Style C

tripointehomes.com

The prices of our homes, included features, plans, specifications, promotions/incentives, neighborhood build-out, and available locations are subject to change without notice. Stated dimensions, square footage, and acreage are approximate and should not be used as a representation of any home's or homesite's precise or actual size, location, or orientation. There is no guarantee that any particular homesite or home will be available. No information or material herein is to be construed to be an offer or solicitation for sale. A Broker/Agent must register their client in person on the client's first visit at each community for a Broker/Agent to receive a commission or referral fee, if available. Not all features and options are available in all homes. Unless otherwise expressly stated, homes do not come with hardscape, landscape, or other decorator items. Any photographs or renderings used herein reflect artists' conceptions and are for illustrative purposes only. Community maps, illustrations, plans, and/or amenities reflect our current vision and are subject to change without notice. Maps not to scale. © 2023 Tri Pointe Homes, Inc. All rights reserved. tripointehomes.com



Tri Pointe Homes - Alpine Ridge Plan 2

2,623 Square Feet 3 Bedrooms, 2.5 Baths, 2 Car Garage

Alpine Ridge Plan 2

3 Bedrooms, 2.5 Baths, 2 Car Garage

2,623 Square Feet

Base Price	\$709,000.00
Selected Options Upgrades	
• Office Double Entry Doors	\$2,745.00
• Primary Bath Spa Shower	\$8,365.00
• Exterior Style C	\$0.00
Estimated Options Total	\$11,110.00
Estimated Total	\$720,110.00

tripointehomes.com

The prices of our homes, included features, plans, specifications, promotions/incentives, neighborhood build-out, and available locations are subject to change without notice. Stated dimensions, square footage, and acreage are approximate and should not be used as a representation of any home's or homesite's precise or actual size, location, or orientation. There is no guarantee that any particular homesite or home will be available. No information or material herein is to be construed to be an offer or solicitation for sale. A Broker/Agent must register their client in person on the client's first visit at each community for a Broker/Agent to receive a commission or referral fee, if available. Not all features and options are available in all homes. Unless otherwise expressly stated, homes do not come with hardscape, landscape, or other decorator items. Any photographs or renderings used herein reflect artists' conceptions and are for illustrative purposes only. Community maps, illustrations, plans, and/or amenities reflect our current vision and are subject to change without notice. Maps not to scale. © 2023 Tri Pointe Homes, Inc. All rights reserved. tripointehomes.com

