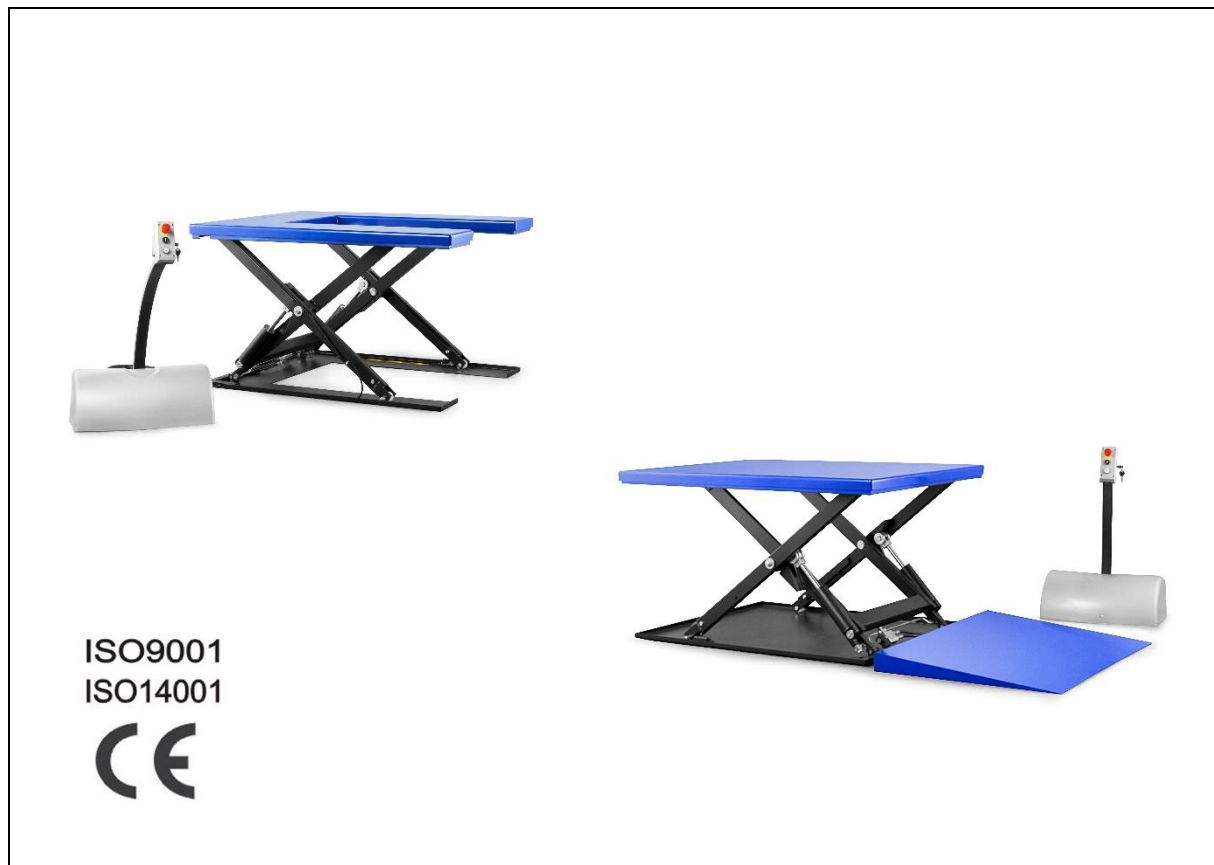


Scissor lift table TABLE-U TABLE-LOW



Original of the OPERATING INSTRUCTIONS

Keep for future use

Address of the manufacturer

Trading EU GmbH
Gruckingerstrasse 4
D - 85461 Bockhorn

Tel.: +49 (0) 8123 - 989 0 900
Fax: +49 (0) 8123 - 989 0 904
E-mail: info@tradingeu.de
Web: www.tradingeu.de

Dear customer

This powerful lift table is an indispensable product for everyday lifting work. Due to its U-shape, pallets can be placed directly on it with the lift truck.

When using scissor lifts, some safety measures must be taken to avoid injury to persons and damage to the product.

Scissor lifts should only be used by instructed personnel.

Please read these instructions and keep them in a safe place so that they are always to hand.

We accept no liability for accidents and damage caused by non-observance of these instructions!

Only suitable for commercial, industrial or professional applications.

Operating instructions

Document number:	Lift table Pallit TABLE-U / TABLE-LOW
Version:	1.0
Creation date:	01.01.2020
Last change:	01.09.2022
Model:	TABLE-U 1000kg TABLE-LOW 1000kg TABLE-LOW 2000kg
Year of manufacture:	2022

Customer entries

Inventory no:	
Location:	

Storage

The operating instructions must be kept in the responsible specialist department. They must always be at hand.

Content

I. Overview 4

II. Safety instructions 5

III. technical specifications 7

IV Protection of the environment 7

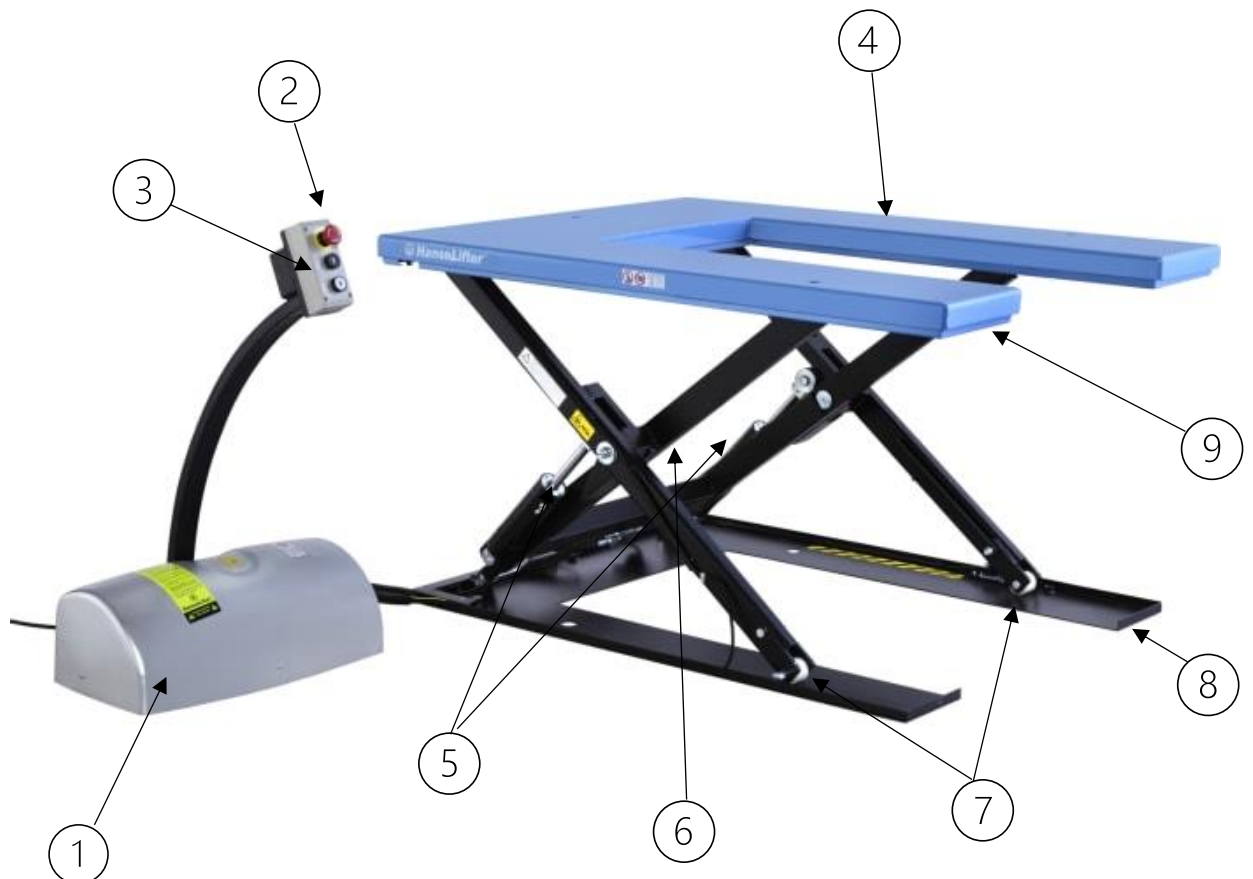
V. Applications 8

VI. problem solving10

VII. Diagramme.....11

VIII. parts lists17

I. Overview



1. hydraulic unit with control panel and cable (380V)	6. shear unit
2. emergency stop	7. castors
3. on/off switch	8. base plate
4. U-shaped platform	9. pinch protection (safety protection frame)
5. lifting cylinder	

II. Safety instructions



CAUTION! Never use the lift table to lift/lower people or animals!

1. This appliance may only be operated by qualified, trained persons.
2. Keep the immediate working environment clean. Untidy work areas and can cause accidents.
3. Please take environmental influences into account. Ensure that your workplace is well illuminated.
Do not use the unit in a flammable or explosive environment.
4. Protect yourself from electric shocks. Avoid contact with earthed surfaces (e.g. pipes, radiators, cookers or refrigerators).
5. Keep this unit away from unauthorised persons. Prevent others from touching during operation.
Ensure that persons keep a sufficient distance from the working area.
6. The lift table must not be overloaded under any circumstances! Please do not exceed the maximum load capacity (see type plate).
7. One-sided loading of the U-shaped lift table is not permitted. Ensure even load distribution
8. It is forbidden to assemble and use the lift table on uneven ground or in an inclined position. Place the device on a level, clean surface.
9. Do not use the unit in aggressive environments or at low temperatures.
10. Wear safe working clothes. Never wear loose clothing or jewellery; these could be caught by the moving parts of the machine. Wearing safety equipment (such as rubber gloves, non-slip footwear, ear and hair protection, etc.) is recommended when working.
11. When the lift table is not in use, the platform should be lowered.
12. If the appliance is not used for a long time, disconnect it from the mains.
13. Always disconnect the mains plug before carrying out maintenance work.
14. Never reach under the scissor unit with your hand or foot. There is a risk of injury.
15. Do not lift people. Persons may fall down and suffer serious injury.
16. Always work carefully and with great caution. Do not operate it when you are tired or under the influence of medication, alcohol, drugs or other narcotics.

17. Check the components for damage. Before commissioning, check the unit for any damaged components, especially damaged safety components, to ensure proper operation and fulfilment of the intended function. Check the adjustment and connection of moving parts, check all components for breakage, connection and other conditions that may affect proper operation. Damaged components, especially damaged safety devices, must be repaired or replaced by a specialist, unless otherwise stated in these operating instructions. Please have damaged switches repaired by a specialist. Never use the machine if it cannot be switched off or on with the main switch.
18. Use only the accessories recommended by the manufacturer. Use of accessories or attachments other than those described in this manual may result in injury.
19. Have your lift table repaired only by qualified personnel or by the manufacturer. The use of original spare parts is mandatory; otherwise, serious injuries may occur.
20. Make sure to operate the emergency stop switch to stop the machine in case of a dangerous emergency situation. Return the red switch head to the operating state in the direction of the arrow (clockwise) when the danger has passed.
21. The unit is equipped with a pinch protection under the platform. This is a safety-relevant component. Check the function regularly. Do not disable the function by fixing the safety frame or otherwise bypassing the circuit. There is an increased potential for injury if this is done.
22. To avoid leakage during use of the products, the user should prepare some absorbent materials (wood scraps or dry dust cloths) to soak up the leaking oil in time. To avoid further pollution of the environment, the used absorbent materials should be handed in to special departments of the local authorities.

III. technical specifications

Capacity	kg	1000
Lifting height	mm	840
Min. height	mm	80~85
Table dimensions	mm	Length 1450 * Width 1140* Inside 585
Lifting speed	S	18
Lower speed	S	15
Flow rate	L/min	3
Oil tank	L	3
Pumping station		AC3x380V, 750W

- Please make sure of the workload before operation: S3 20%-10min, run for 2min, rest for 8min, one cycle every 10min.
- The standard equipment for the lifting height is 30 m.
- The LWA values given here only indicate the volume emitted by this machine. Whether the operator needs to wear hearing protection cannot be determined here. This depends on how much noise reaches the operator's ear. And that depends, among other things, on the existing environmental conditions (e.g. other noise sources nearby). Even if it is not explicitly prescribed, it is in your own interest to always wear hearing protection when working with this machine.

IV Protection of the environment



Worn-out electrical appliances are recyclable and do not belong in household waste! Please actively support us in conserving resources and protecting the environment by handing in this appliance at the collection points (if available).

1. Environmentally hazardous waste such as batteries and electronic equipment have negative effects on the environment or health if not handled properly.
2. Waste packages should be sorted by materials and disposed of in designated waste bins collected by local environmental protection authorities. In order to avoid environmental pollution, it is forbidden to throw away the waste indiscriminately.

3. To avoid leakage during use of the products, the user should prepare some absorbent materials (wood scraps or dry dust cloths) to soak up the leaking oil in time. To avoid further pollution of the environment, the used absorbent materials should be handed in to special departments of the local authorities

V. Applications

Preparation

Before commissioning, you should make some preparations:

- Make sure that the voltage of your mains supply matches the voltage indicated on the rating plate and that the appliance is fitted with the correct mains plug.
- Before connecting to the mains, press the emergency stop switch on the unit

Caution: Make sure that no persons are standing on the lift table or the immediate working area.

- Connect the unit to the mains.

Caution: The power cable must not be live, but should have enough reserve. In case of a longer distance, use an extension cable. Do not run over the cable as this may damage the cable. A damaged cable can lead to an electric shock! A damaged cable may only be repaired by qualified personnel.

- Before official commissioning, please first carry out an idle test and check the functions:
 - a. The up/down switch function ensures control of raising and lowering.
 - b. The function of the platform shutdown strap to ensure that the shutdown works when lowering.
 - c. Abnormal noises during commissioning.
 - d. Tightness of the hydraulic lines
 - e. Obvious damage to the platform
 - f. Obvious damage to hydraulic or power lines
- Check the platform before commissioning - avoid commissioning if there is obvious damage

Use

- Press the emergency stop button on the unit.

Caution: **Make sure that no persons are standing on the lift table or the immediate working area.**

- Plug the 380V plug into a 380V socket and make sure that the plug is firmly seated.
-

When you press this switch, it turns the power off, and if you then turn it clockwise, the power is restored.

- 3.2 Lifting switch
- When you press this switch, the table rises; when you release your hand, the table no longer rises.
- 3.3 Lowering switch
- When you press this switch, the table lowers; when you release your hand, the table stops lowering.
- 3.4 Spare switch
- The table cannot raise or lower when the safety protection frame switch is activated. When you press the Raise switch, the table raises, when you press this switch, the table lowers.

Maintenance and cleaning

Hydraulic oil

Please check the oil level every six months. The oil can be hydraulic oil according to: ISO VG 32 (GB11118-89), its viscosity should be 32cSt at 40°C, the total volume is about 4.litres.

Daily control and maintenance

It is necessary to check the unit daily for visual defects. Special attention should be paid to the rollers and the axles as objects can block the rollers; the shears and the table should be checked as they can be deformed.

After finishing work, lower the lift table.

Lubrication

Lubricate all moving parts with engine oil or grease.

VI. problem solving

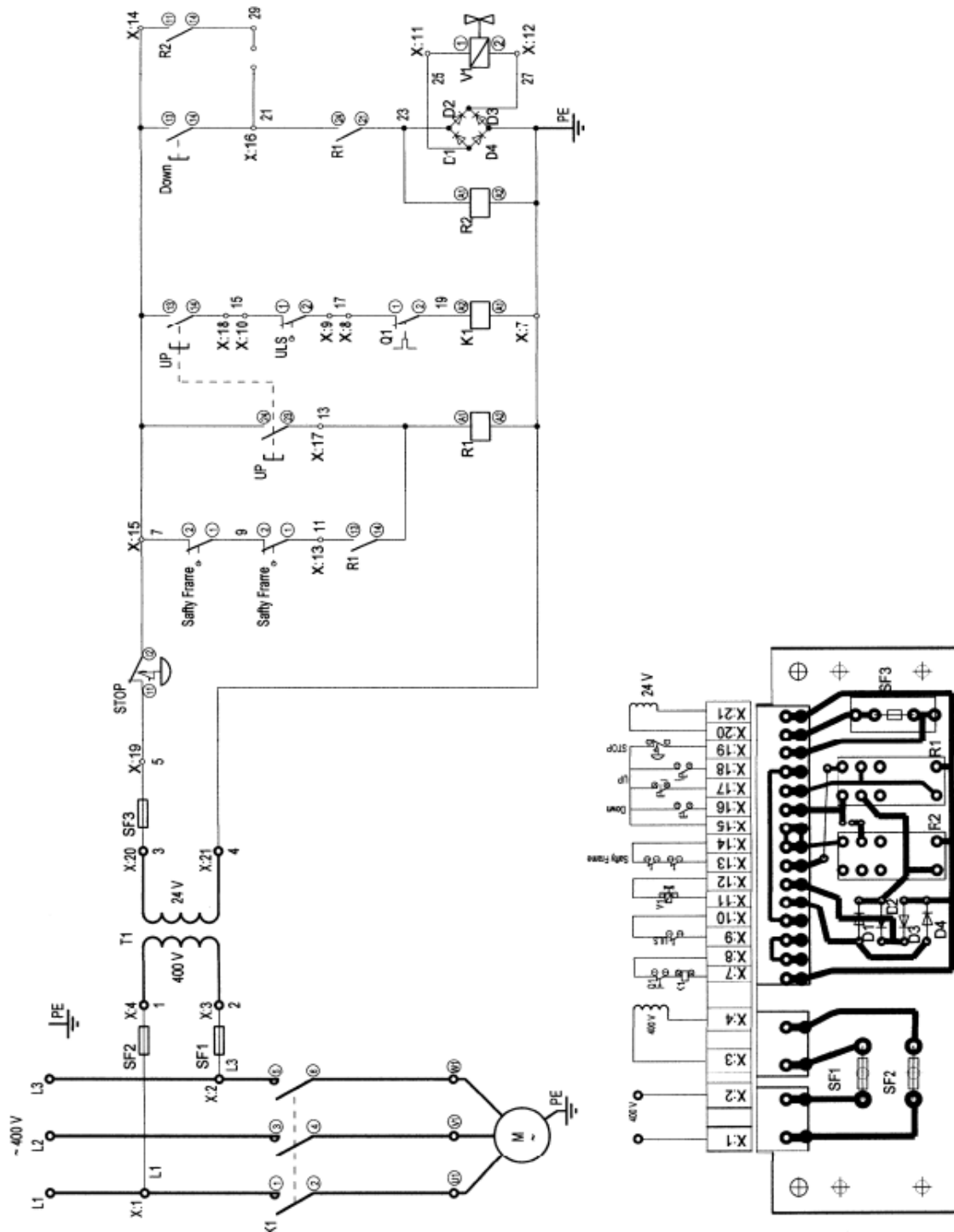
No	Problem	Explanation	Solution
1	The table cannot be raised to the maximum height.	<ul style="list-style-type: none"> -The hydraulic oil is not sufficient. -The position of the drive switch. 	<ul style="list-style-type: none"> -Pour hydraulic oil after -Set the position of the driving switch.
2	The table cannot be lifted	<ul style="list-style-type: none"> -no or too little hydraulic oil. -Electromagnetic valve cannot function. 	<ul style="list-style-type: none"> -fill oil -Change of the electromagnetic valve
3	The motor does not start	<ul style="list-style-type: none"> -The emergency switch is turned off. -The connection of the electric cable is loose. -The contactor of the DC motor is damaged. 	<ul style="list-style-type: none"> -Turn the emergency switch clockwise. -Tighten; -Replace it with a new one.
4	The platform cannot be lowered	<ul style="list-style-type: none"> -The piston rod or mast is deformed due to partial load on one side or overload. -The fork has been held in the high position for a long time, causing the piston rod to wear and rust and jam. -The pump's drain valve is impaired in function due to abrasion. 	<ul style="list-style-type: none"> -Replace with a new copy -Keep the fork in the lowest position when not in use and pay special attention to the lubrication of the piston rod. -Replace it with a new one.
5	Leakage	<ul style="list-style-type: none"> -The sealing elements are worn or damaged. -Some parts are cracked. 	<ul style="list-style-type: none"> - Replace it with a new one. - Replace it with a new one.
6	The platform lowers itself	<ul style="list-style-type: none"> -Contaminants in the oil cause the drain valve to no longer close tightly. -The sealing elements are worn or damaged. -The drain valve is damaged. 	<ul style="list-style-type: none"> - Replace it with a new one. - Replace it with a new one. - Replace it with a new one.

NOTE: Do not attempt to repair the lift table yourself unless you are trained and authorised to do so.

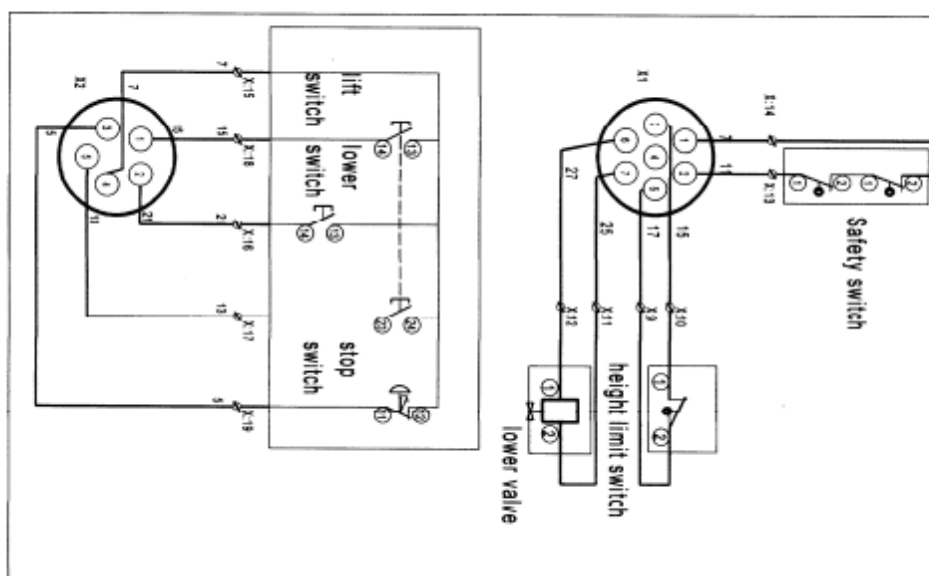
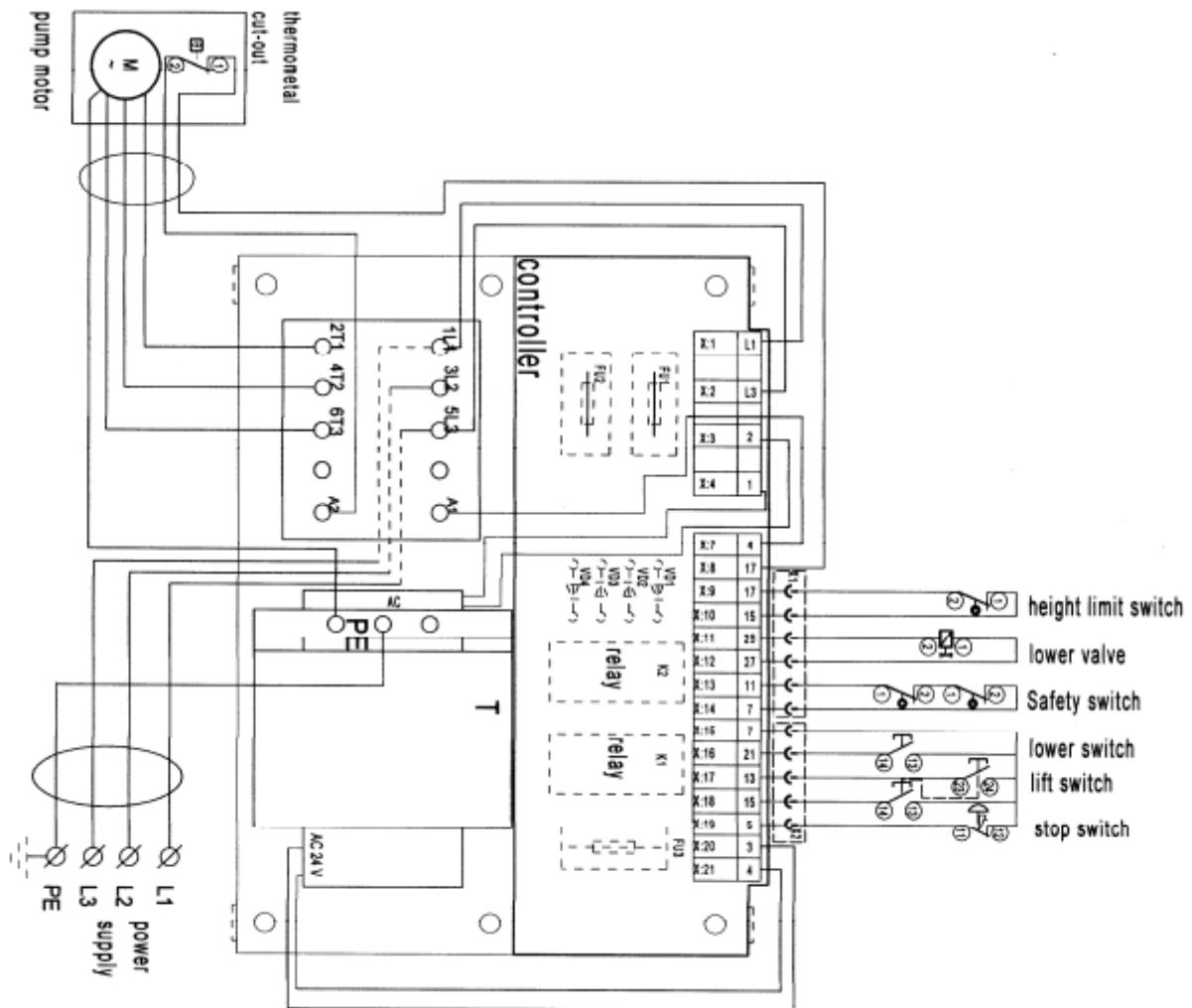
Contact the manufacturer or a service partner recommended by the manufacturer.

VII. Diagramme

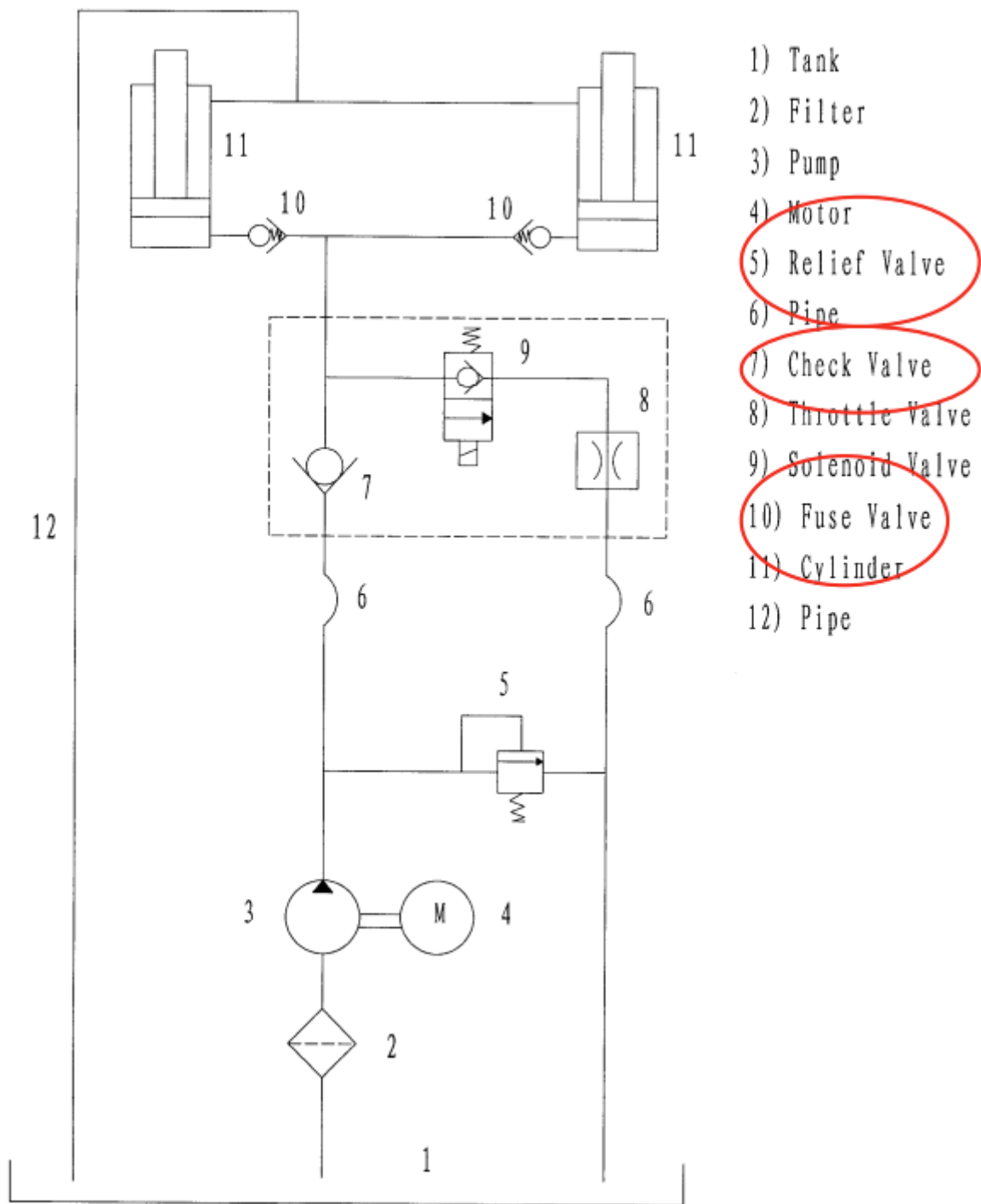
1. Electrical circuit diagram TABLE-LOW



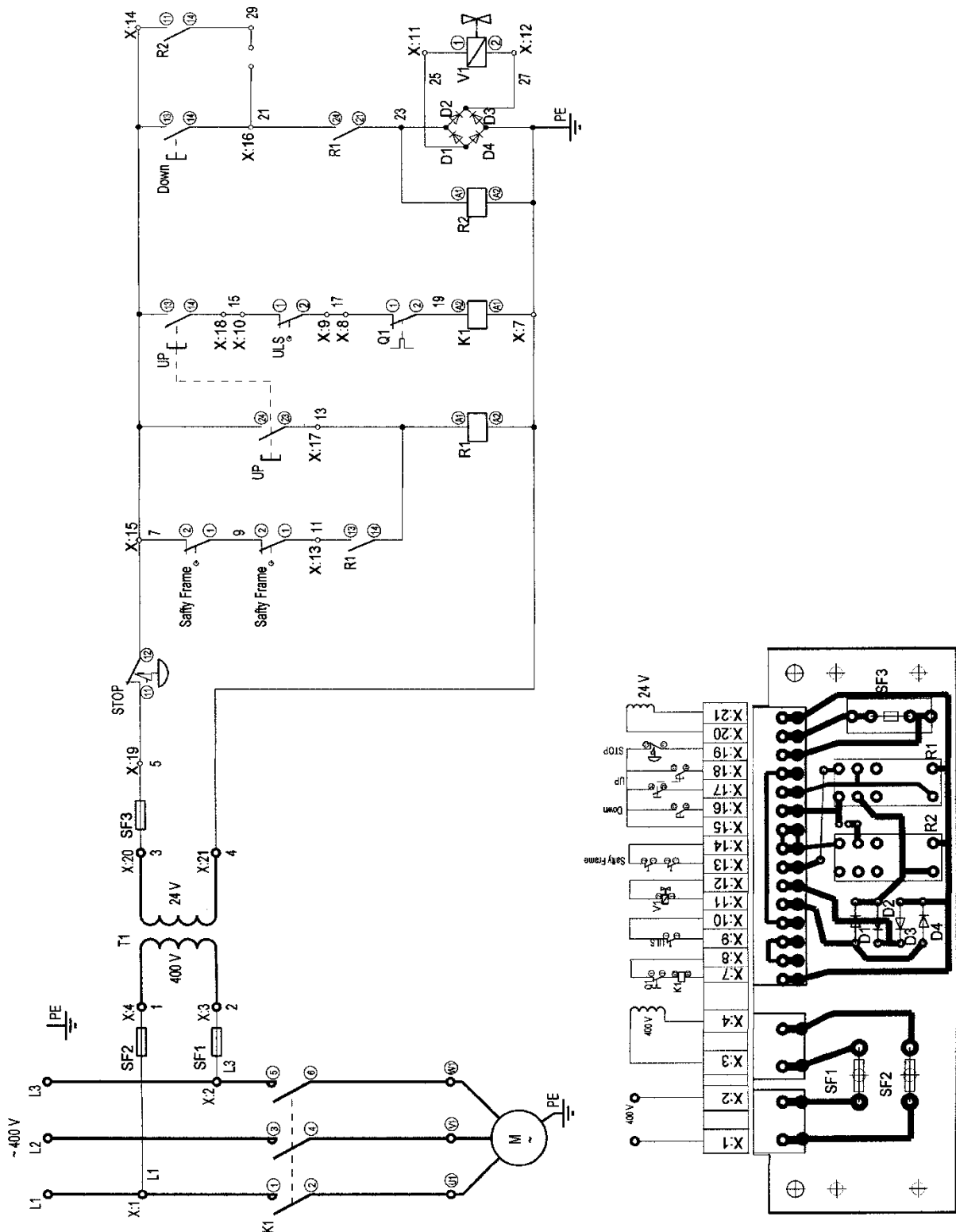
2. Connection diagram TABLE-LOW



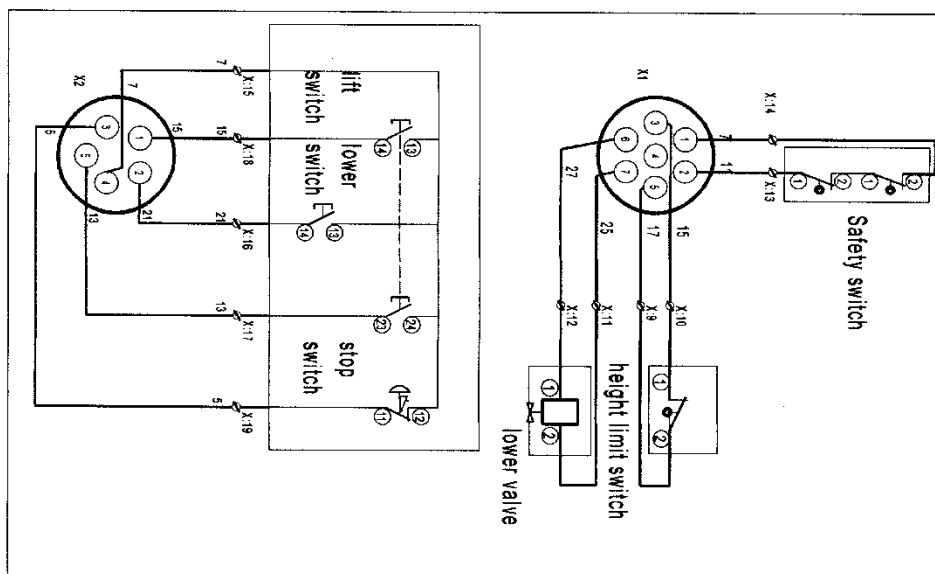
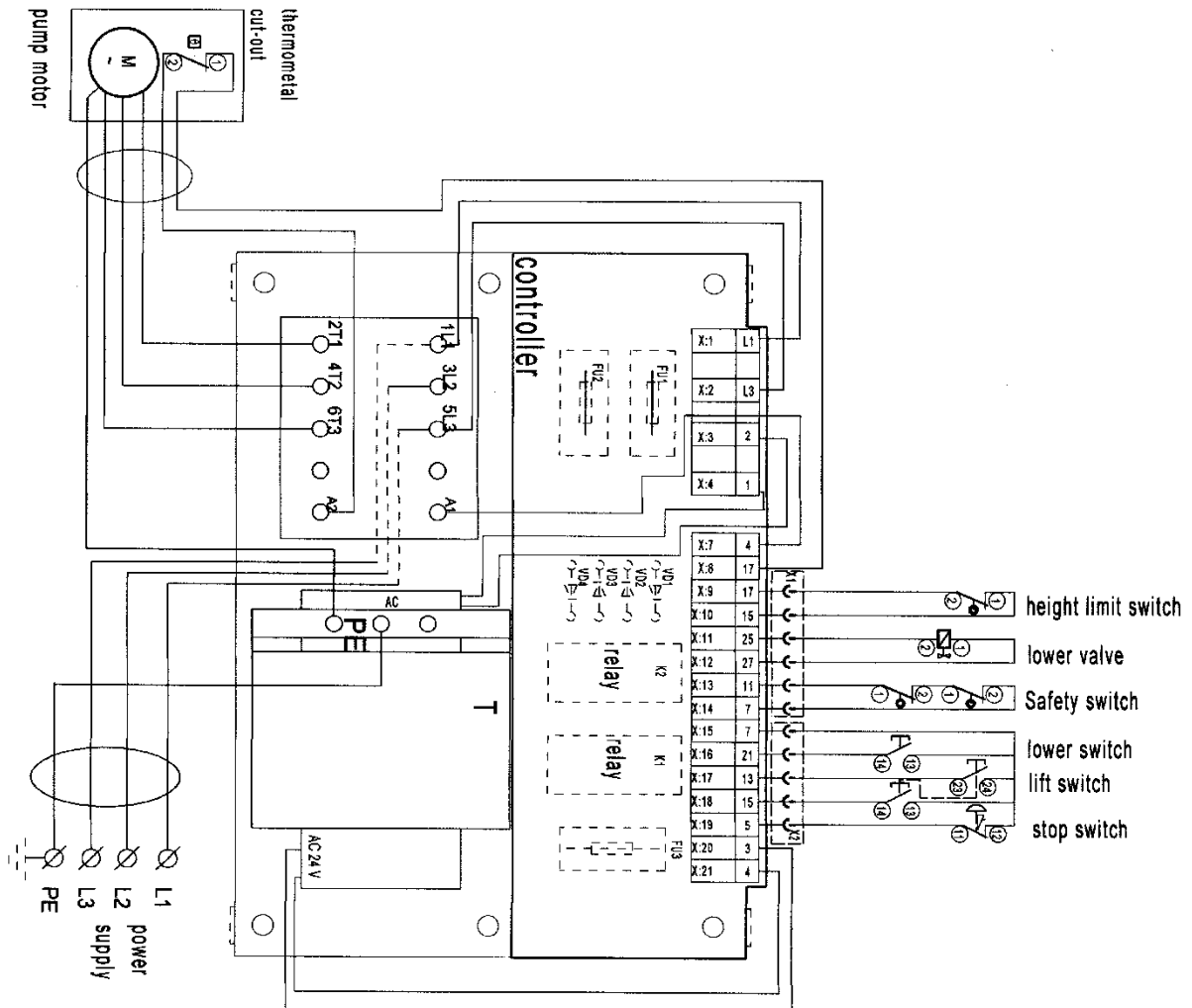
3. Hydraulic system diagram TABLE-LOW



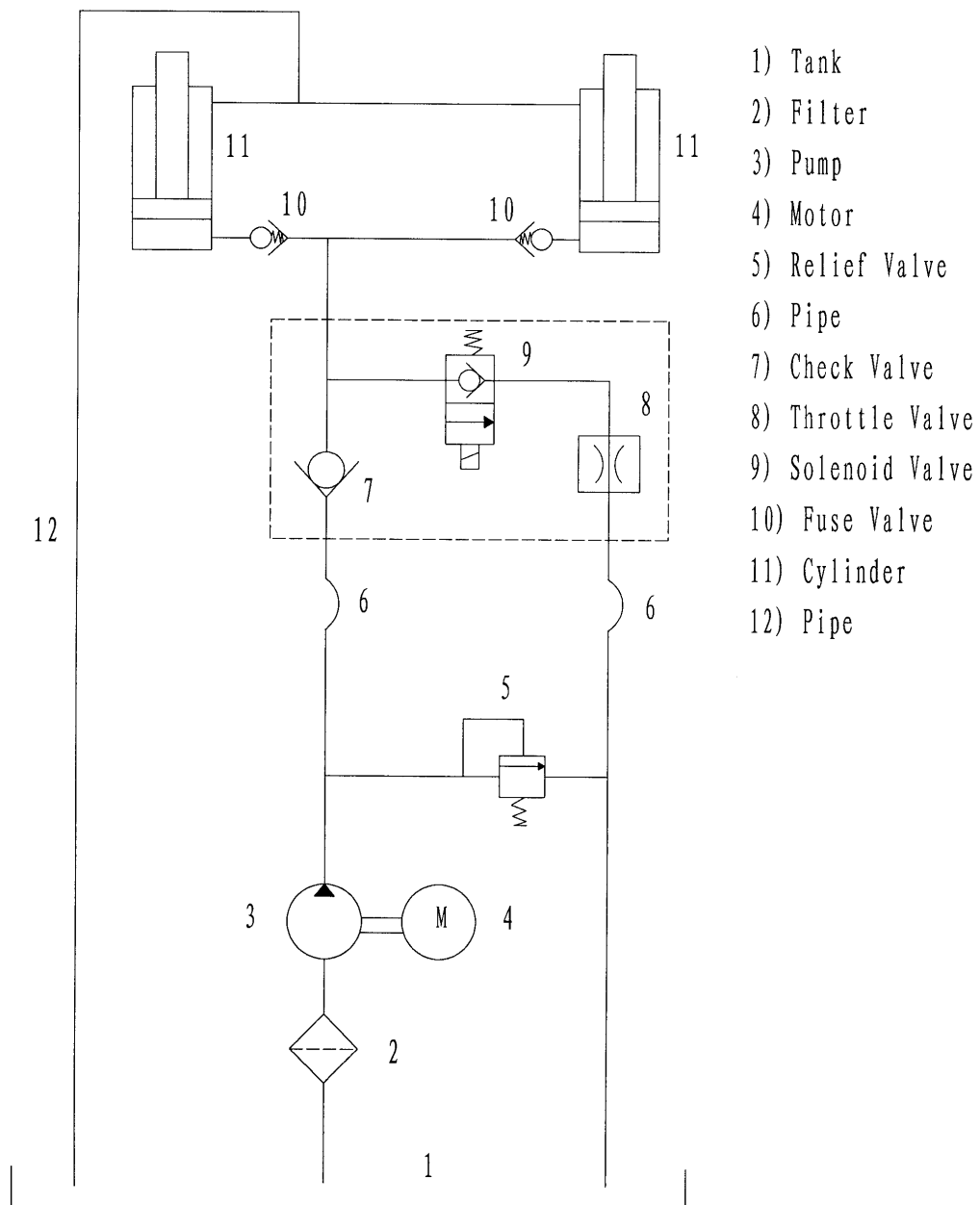
4. Electrical circuit diagram TABLE-U



5. Connection diagram TABLE-U

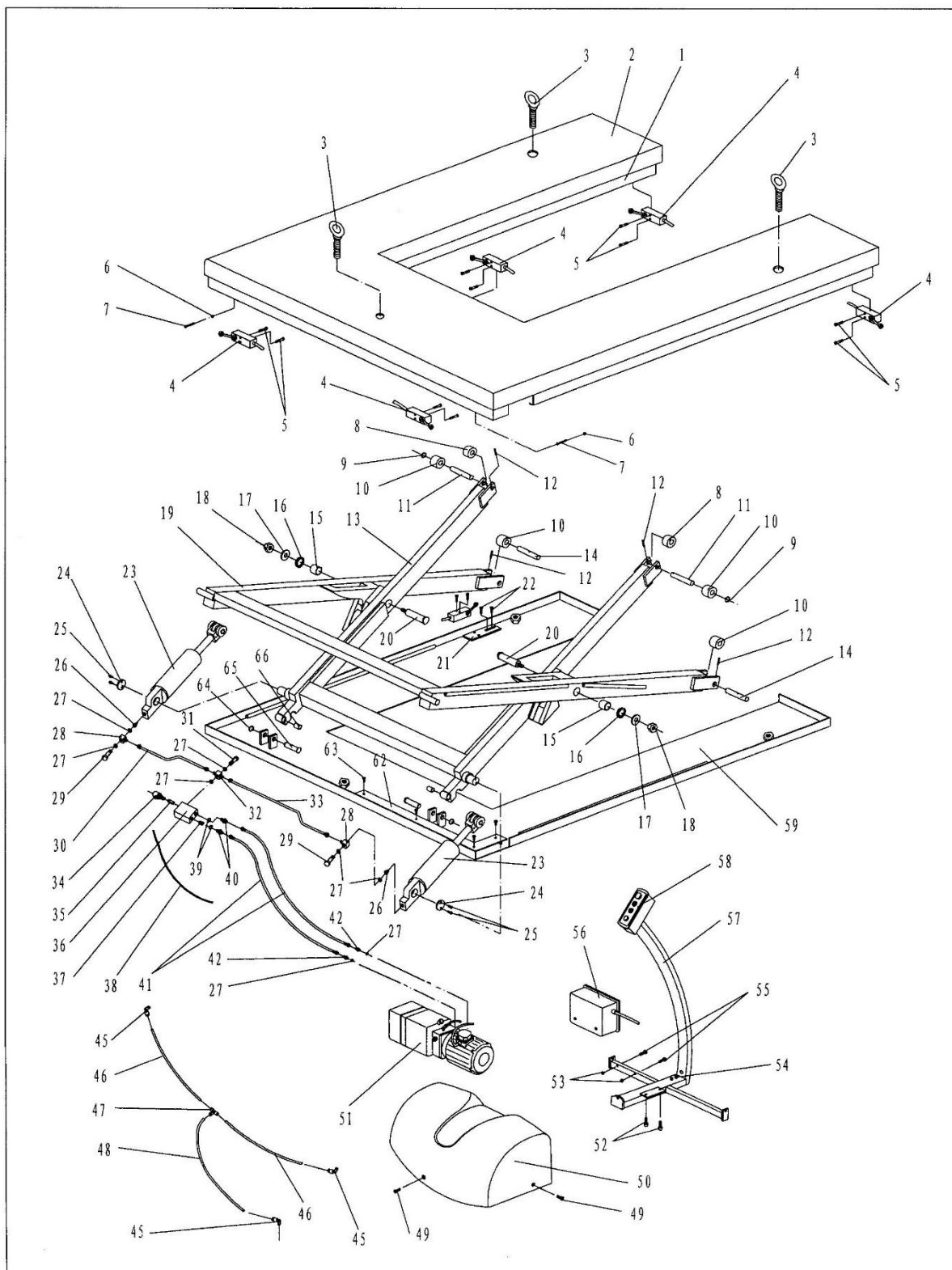


6. Hydraulic system diagram TABLE-U

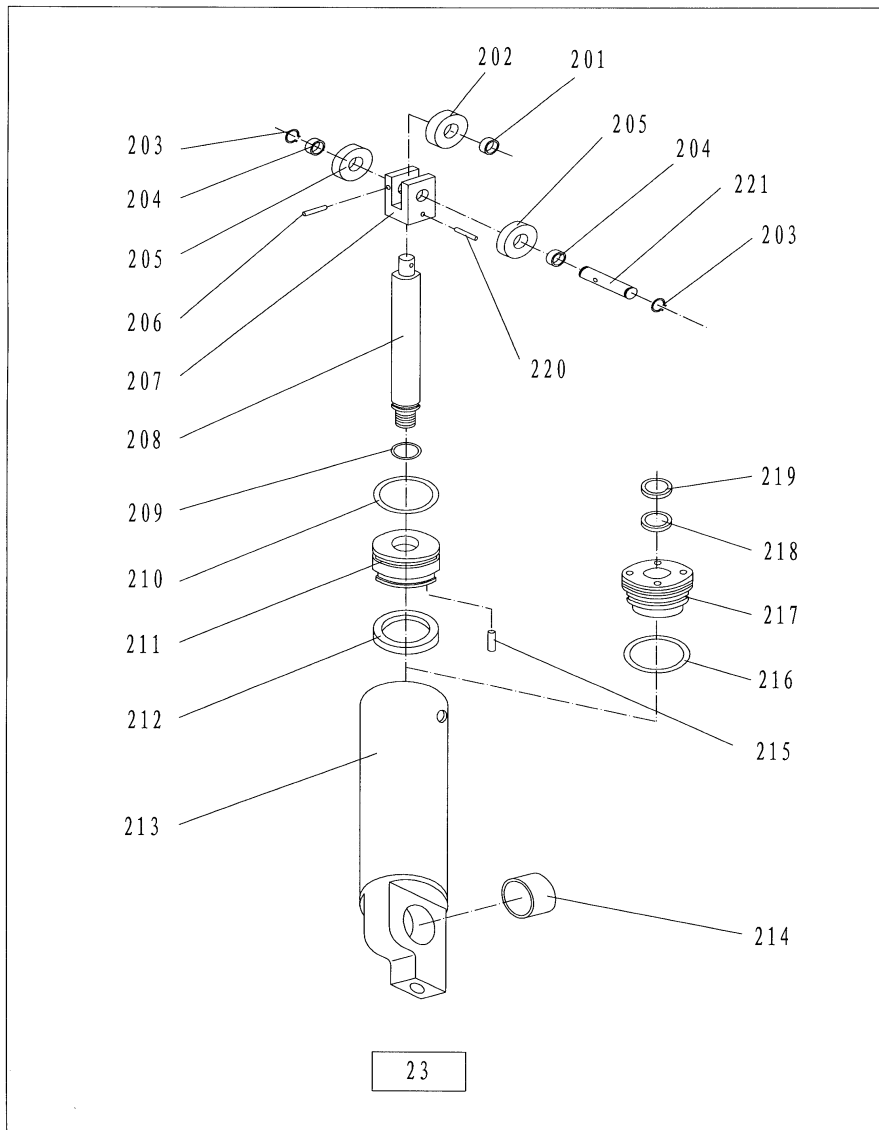


VIII. parts lists

TABLE-U

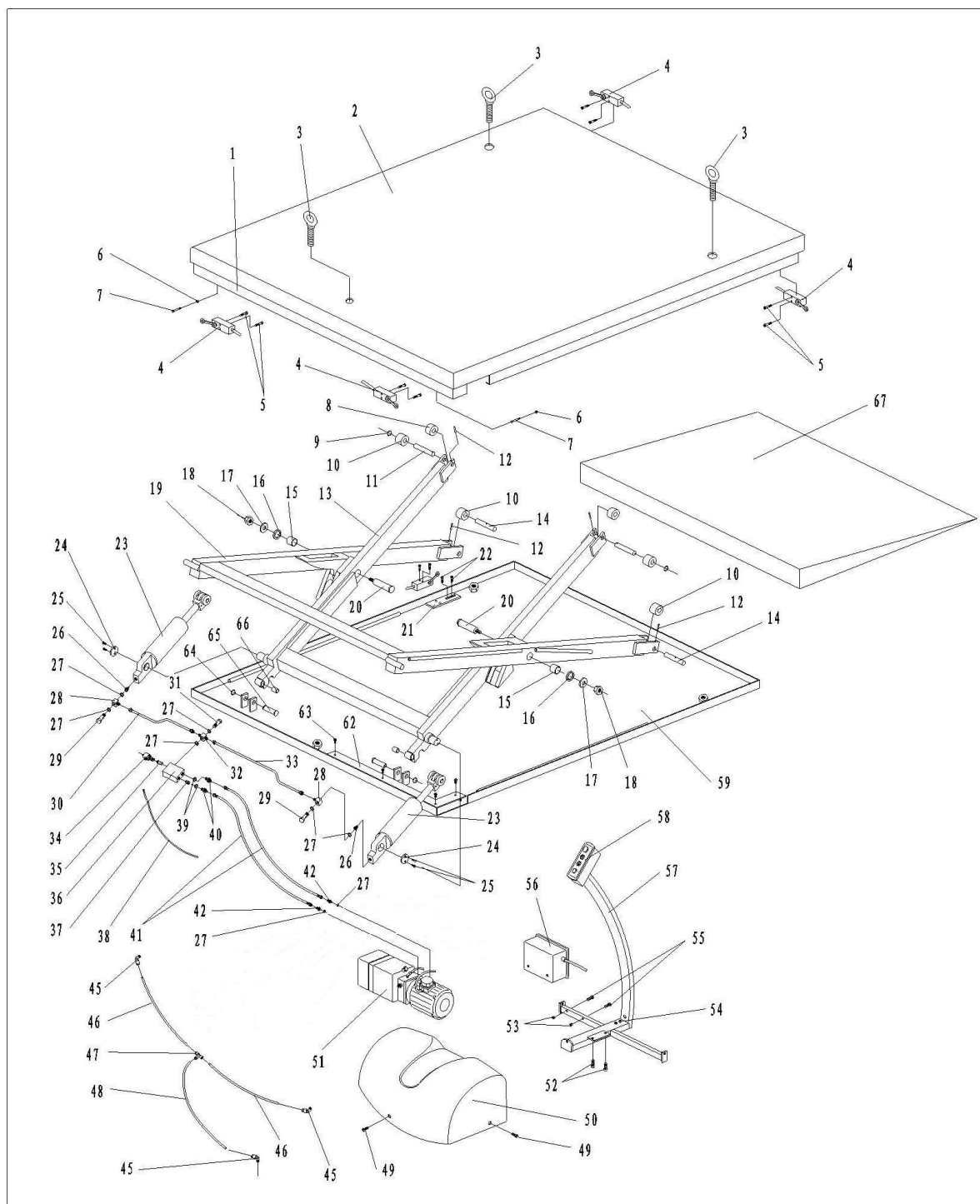


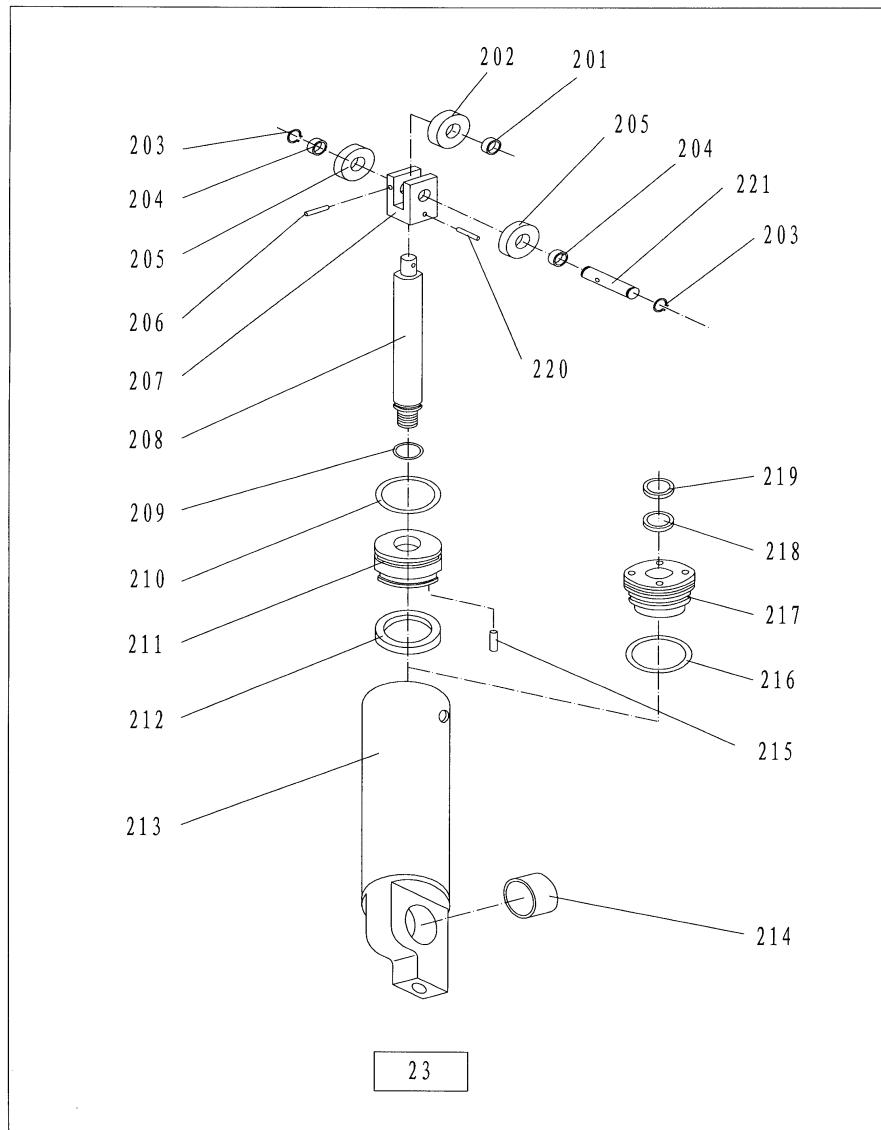
No	Description	Quantity	No	Description	Quantity.
1	Security border	1	36	Valve plank	1
2	U-table	1	37	Unilateralism Valve	1
3	Screw	3	38	Cable	1
4	Microswitch	6	39	Washer	3
5	Screw	12	40	Nipple M-M1/4-3/8	2
6	Nut	2	41	1/4 L=3000 tube	2
7	Screw	2	42	Nipple M1/4	2
8	Roller	2	43		
9	Circlip	2	44		
10	Roller	4	45	Curve	3
11	Wave	2	46	Pipe	2
12	Elastic pin	4	47	Common	1
13	Inside of the fork arm	1	48	Pipe	1
14	Wave	2	49	Screw	3
15	Socket	2	50	Bonnet	1
16	Washing machine	2	51	Pump	1
17	Washing machine	2	52	Screw	2
18	Nut	2	53	Nut	2
19	Outer fork arm	1	54	Screw	2
20	Wave	2	55	Screw	2
21	Connect plank	1	56	Chopper	1
22	Screw	2	57	Bracket	1
23	Cylinder	2	58	Control switch	1
24	Washing machine	2	59	Lower plank	1
25	Screw	4	60		
26	Safety valve	2	61		
27	Washer	7	62	Cover plate	1
28	Square joint	2	63	Screw	4
29	Screw	2	64	Circlip	2
30	Pipe	1	65	Wave	2
31	Screw	1	66	Socket	4
32	Common	1			
33	Pipe	1			
34	Electromagnetism valve	1			
35	Throttle valve	1			



No	Description	Quantity	No	Description	Quantity
201	Socket	2	212	Y-seal	2
202	Roller	2	213	Housing	2
203	Circlip	4	214	Socket	2
204	Socket	4	215	Pin	2
205	Roller	4	216	O-ring	2
206	Elastic pin	2	217	Cylinder cover	2
207	Roll seat	2	218	Y-seal	2
208	Piston rod	2	219	Dust ring	2
209	O-ring	2	220	Elastic pin	2
210	O-ring	2	221	Wave	2
211	Piston	2			

TABLE-LOW 1000kg





No	Description	Quantity	No	Description	Quantity
201	Socket	2	212	Y-seal	2
202	Roller	2	213	Housing	2
203	Circlip	4	214	Socket	2
204	Socket	4	215	Pin	2
205	Roller	4	216	O-ring	2
206	Elastic pin	2	217	Cylinder cover	2
207	Roll seat	2	218	Y-seal	2
208	Piston rod	2	219	Dust ring	2
209	O-ring	2	220	Elastic pin	2
210	O-ring	2	221	Wave	2
211	Piston	2			

EG Konformitätserklärung / EC Declaration of conformity

EC Déclaration de conformité / EC Declaración de Conformidad / EC Dichiarazione di conformità

Hersteller:	Trading EU GmbH Gruckinger Str. 4 D – 85461 Bockhorn
Producer:	
Fabricant:	
Produttore:	
Fabricante:	

Hiermit erklärt der Hersteller, dass das Produkt

The producer hereby declares, that the following product

Le fabricant déclare par la présente que le produit

Il produttore dichiara che il prodotto

El fabricante declara que el producto

Bezeichnung und Modelltyp:	TABLE-U 1000kg TABLE-LOW 1000kg TABLE-LOW 2000kg
Designation and type:	
Description et type:	
Designazione e tipo:	
Designación y tipo:	

folgenden einschlägigen Bestimmungen entspricht:

is in accordance with the following guidelines:

est conforme aux dispositions pertinentes suivantes:

è conforme alle seguenti disposizioni pertinenti:

cumple con las siguientes disposiciones pertinentes:

EG Maschinenrichtlinie 2006/42/EG, Amtsblatt L157/24	
	EC machinery directive 2006/42/EC
	Directive de machine CE 2006/42/CE
	Direttiva macchine CE 2006/42/CE
	Directiva de máquinas CE 2006/42/CE

Angewandte harmonisierte Normen:	<ul style="list-style-type: none">• EN 1570-1: 2011+A1:2014• EN 60204-1: 2006+A1: 2009
Applied harmonized norms:	
Normes harmonisées appliquées:	
Norme armonizzate applicate:	
normas armonizadas aplicadas:	

Bockhorn, 11.05.2018

Ort, Datum


Bevollmächtigter Michael Seibold