

## Electric lifting truck with lithium-ion battery ONE-XS 1500kg



### Original of the OPERATING INSTRUCTIONS

Keep for future use

#### Address of the manufacturer

Trading EU GmbH  
Gruckingerstrasse 4  
D - 85461 Bockhorn

Tel.: +49 (0) 8123 - 989 0 900  
Fax: +49 (0) 8123 - 989 0 904  
E-mail: [info@tradingeu.de](mailto:info@tradingeu.de)  
Web: [www.tradingeu.de](http://www.tradingeu.de)

## Dear customer

This electric lifting truck is an indispensable product for daily transport operations.

When using electric lifting trucks, some safety measures must be taken to avoid injury to persons and damage to the product.

Electric lift trucks should only be used by instructed personnel.

Please read these instructions and keep them in a safe place so that they are always to hand.

**We accept no liability for accidents and damage caused by non-observance of these instructions!**

**Only suitable for commercial, industrial or professional applications.**

## Operating instructions

Document number:	Electric lifting truck ONE-XS series
Version:	1.0
Creation date:	22.04.2026
Last change:	22.04.2026
Model:	ONE-XS 1500kg / 1150mm

## Customer entries

Inventory no. :	
Location:	

## Storage

The operating instructions must be kept in the responsible specialist department. They must always be at hand.

**Preface:**

**Thank you for choosing the "Pallit" brand electric mobile lifting truck!**

**We hope that our electric mobile lifting truck will make your work much easier!**

- Please read this manual carefully before commissioning.
- These operating instructions show you the correct operation and maintenance of the electric lifting truck.

For personal safety and correct operation, users must read these operating instructions carefully before using the product.

Due to the constant further development of our products, illustrations and contents may vary slightly.

The instructions may also differ if your product is customised.

\*\*\*\*\*

**Attention!**

Operators must strictly adhere to ISO3691 "Safety requirements for powered industrial trucks".  
Unqualified personnel must not operate the lift truck.

\*\*\*\*\*

## Warning:

To ensure the safety of persons and property, the following rules must be strictly observed. The lifting truck has hidden dangers if you do not maintain it regularly. Adequate maintenance facilities, professional staff and maintenance schedules are required.

- Use of the electric lifting truck, maintenance method and rules for inspection:
  1. The lift truck must be checked and serviced regularly.
  2. Instructions for parking the lift truck:
    - Never park on ramps.
    - The forks must be fully lowered.
    - Press the emergency stop button.
  3. Before using the lift truck
    - The user must stand in the working position.
    - Move the handle to the driving position
    - Test lifting, steering, speed, operation, alarm and brake to ensure all functions are normal.
  4. Ensure that a fire extinguishing device is available at the workplace. Do not use an open light to check the battery and hydraulic system.
  5. Regularly check braking, driving, alarm and safety systems and keep them in good working order.
  6. Keep the type plate and warning labels clean and legible.
  7. check and maintain the lifting system regularly.
  8. Check and maintain the hydraulic system regularly. Ensure that no oil leaks from the cylinder, hydraulic valves and other parts of the hydraulic system.
  9. Park the electric lifting truck in clean and preferably dust-free areas.
  10. Unauthorised modifications are prohibited. After modification with
  11. the manufacturer's approval, the type plate and warning sticker should be updated.

## Usage:

1. Ambient temperature 0-45 ° C, prohibition of use in the cold room.
2. Hard ground, flat, no sharp surface objects.
3. Not to be used in very dusty environments.
4. Do not drive over water, oil and muddy ground.
5. Prohibition of use in the rain.
6. Use in flammable, explosive, acid-based or other corrosive environments is prohibited.

The lifting truck is a transport device for use on level ground as mentioned in these instructions.

It is used for lifting and transporting goods. The user must use the appliance according to the instructions in the user manual.

Using the product for applications not listed in the instructions may cause damage to users, equipment, or other property. Overload or unbalanced load must be avoided. When loading, strictly adhere to the information on the type plate or the load capacity diagram. Do not use the lifting truck in areas with fire or explosion hazards or in places with corrosion and dust.

### **Responsibilities and duties of the user:**

In the instructions, the term user refers to any natural or legal person who uses the lifting truck directly or commissions someone to use it.

To ensure the safety of the user and other persons, the user must use the lifting truck in accordance with the operating instructions of the electric lifting truck.

Furthermore, the user must comply with the accident prevention regulations, other

Observe safety regulations, operating and maintenance instructions. Every user must read and understand these instructions.

Failure to comply with these instructions will invalidate the warranty.

We accept no responsibility for any damage caused by incorrect operation by the or any other party.

### **Installation of accessories:**

The installation of additional accessories that have an influence on the function of the unit requires our written approval. Some modifications may require approval from local authorities.

## Content

- I. Introduction .....7
- II. Commissioning of the lift truck ..... 14
- III. Operating instructions .....17
- IV. Battery operation and maintenance .....20
- V. Maintenance and servicing of the lift truck .....22
- VI. Troubleshooting .....23
- VII. Environmental protection .....24
- VIII. Electrical circuit diagram .....24

## I. Introduction

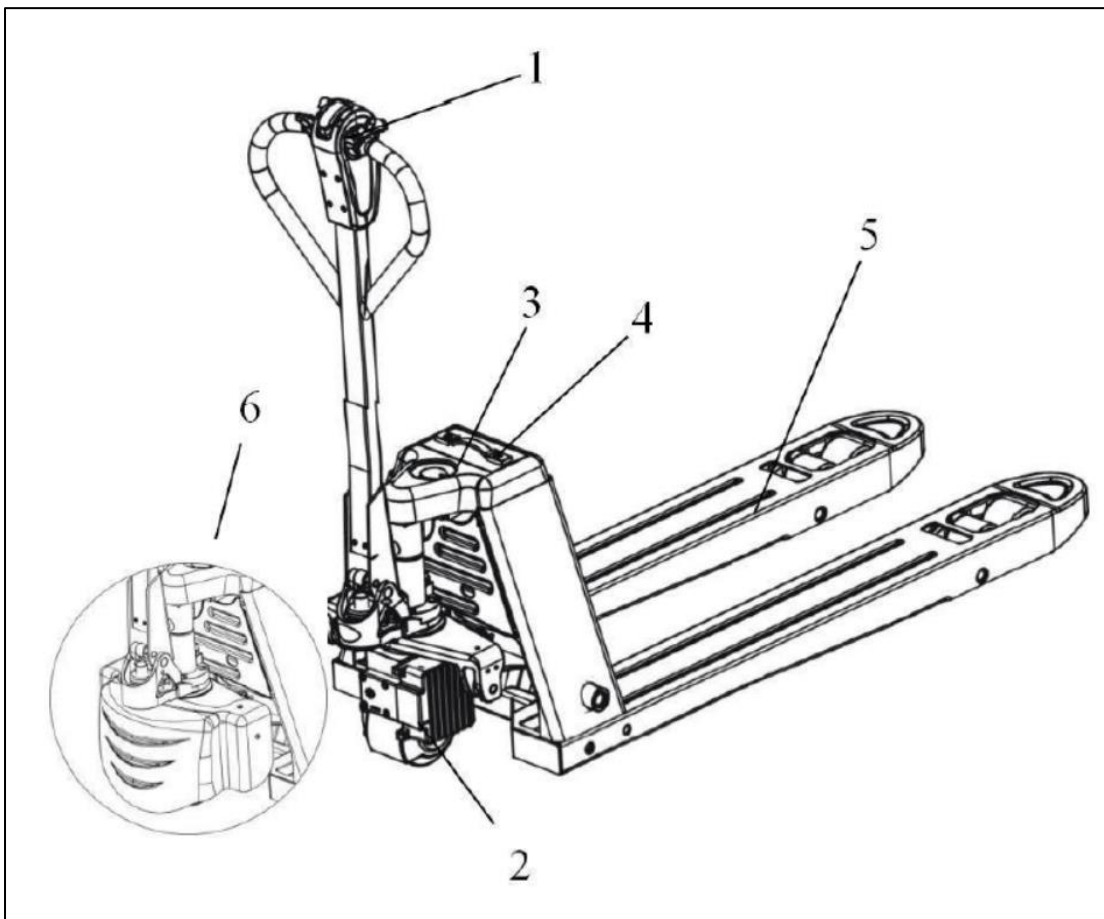
- **Use:**

This electric lifting truck series is designed for transport on level ground. It can be used for both open and closed pallets.

Temperature requirement:

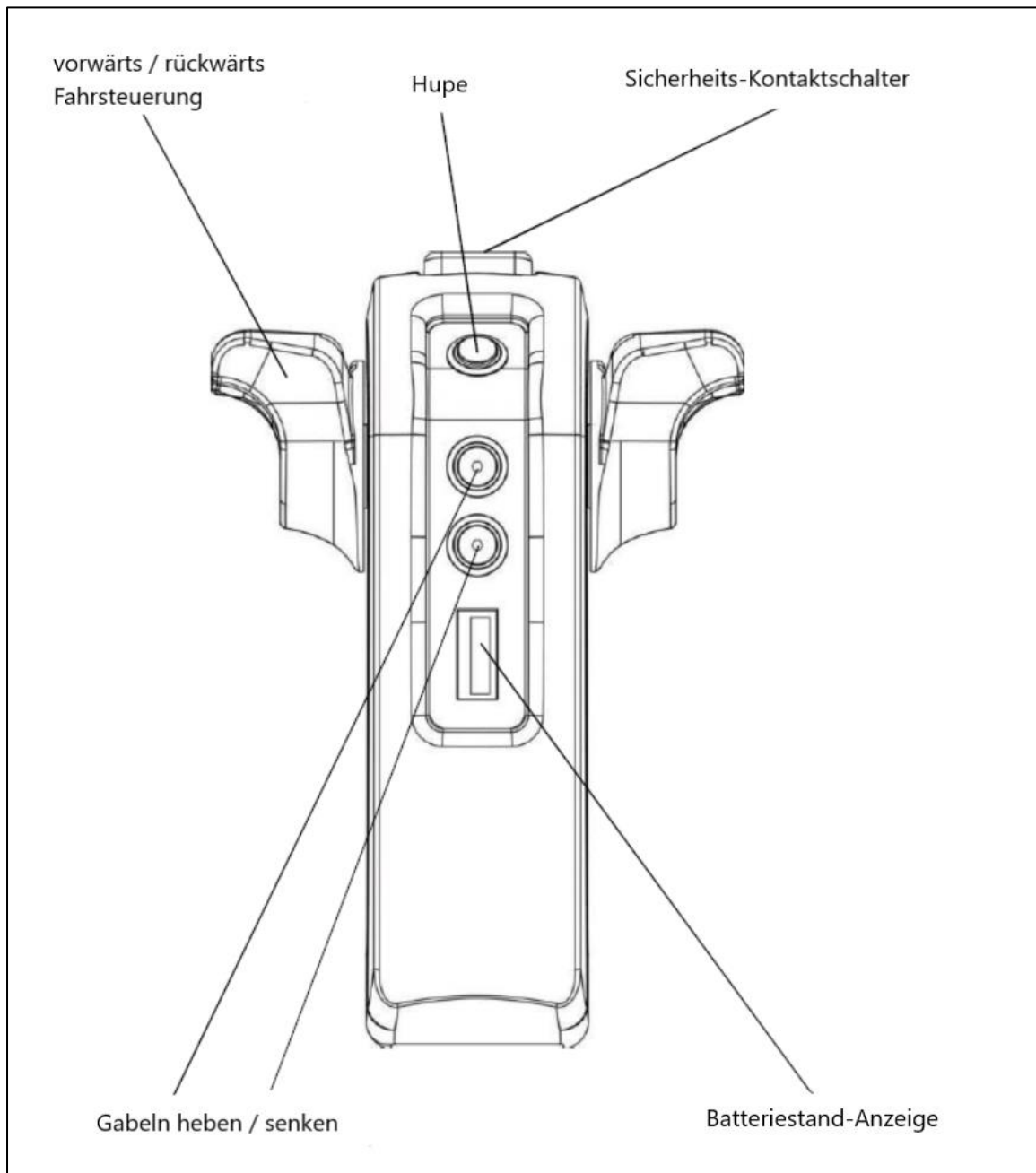
- Working temperature range: 0 - 45 degrees Celsius.
- Freezer protection parts must be used when the pallet is
- lifting truck is used in a cold room with a temperature of less than 5 degrees Celsius, or workplace with strong temperature fluctuations or humidity. This modification requires our approval.

- **Structure:**



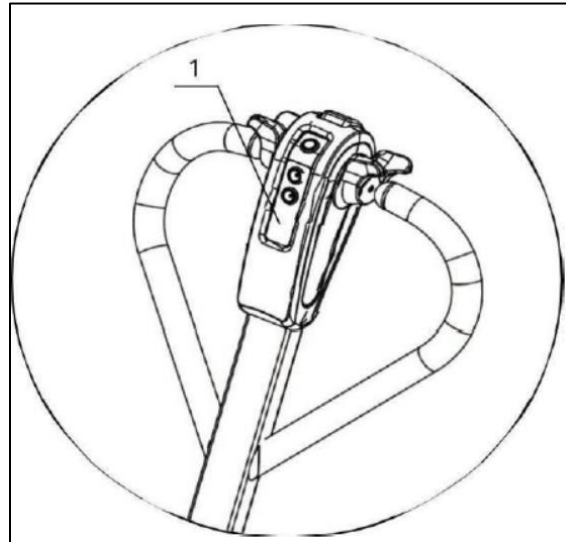
No.	Part	No.	Part
1	Control element	4	Lithium battery
2	Traction motor	5	Fork
3	Emergency stop	6	Cover

- **Control element:**



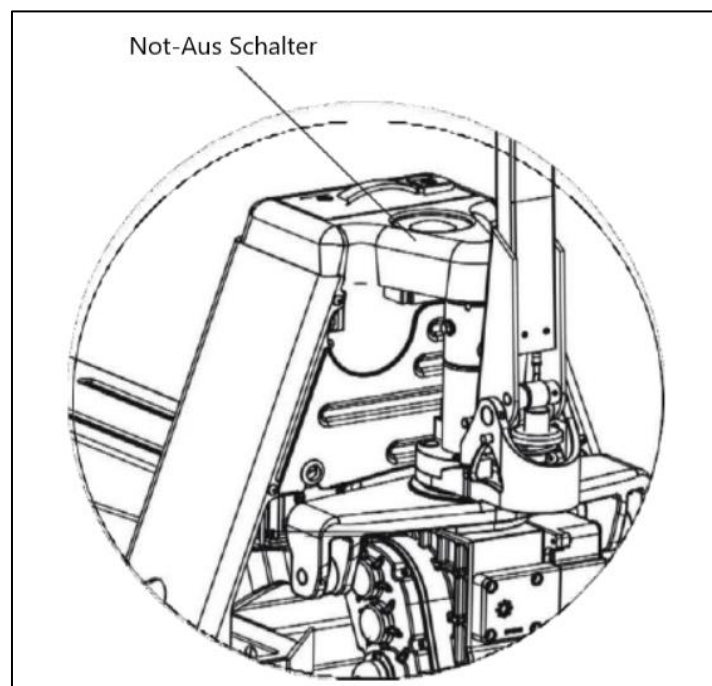
- **Battery level and error display:**

The display shows the remaining battery power and any error codes as well as the hours worked



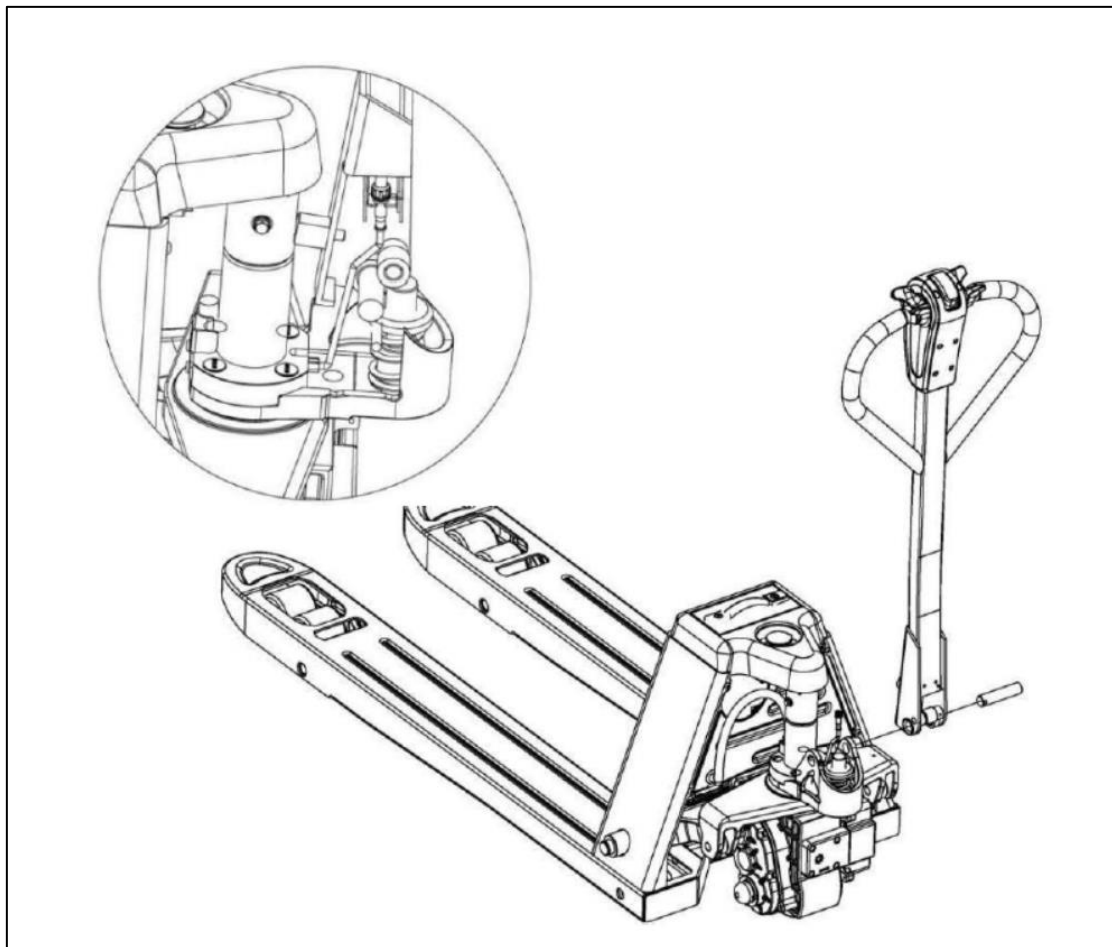
- **Emergency stop switch (power on/off):**

By pressing the emergency stop switch, the power supply is disconnected and all electrically controlled functions are put out of operation and the travel of the lift truck is stopped.

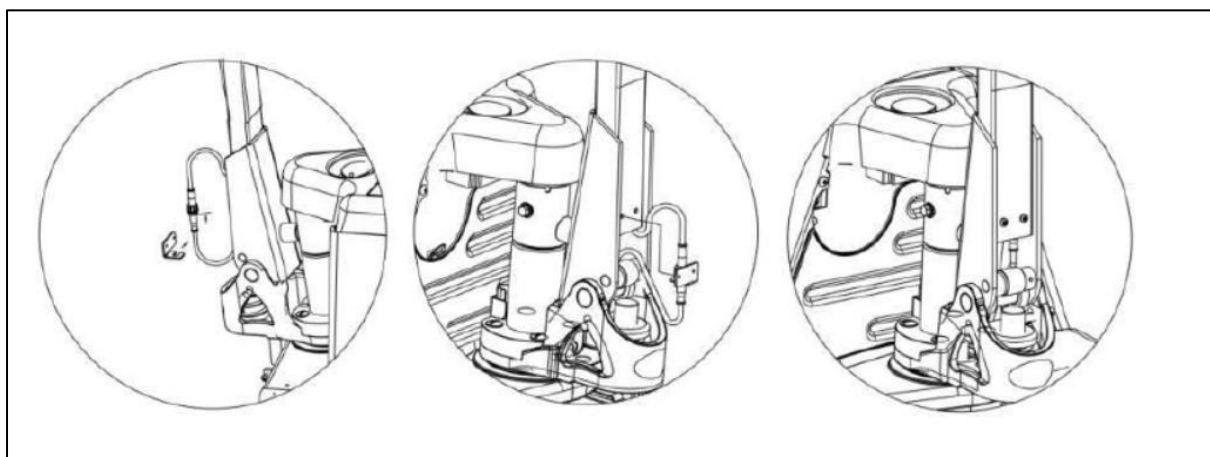


- **Mounting the drawbar:**

1. The numbers of the handles correspond to the chassis numbers.
2. The handle fits into the hole in the handle sleeve.
3. Fully assemble the handle pin shaft and the spring pin,
  1. make sure that the holes are in the correct position.
4. The wires should be connected and placed in the handle.
5. Pull the handle to the lowest position and remove the fixing pin to complete the installation of the handle.
6. Installing the wiring harness on the handle: as shown in the illustration, insert the wiring harness into the handle, taking care not to break the wires.




1. Hold the wires through the wire holder.
2. Insert the wire and the wire holder into the handle tube and fasten the screw.



- **Nameplate:**

<b>Electric Pallet Truck</b>	
<b>Model</b>	<b>Capacity</b>
<b>Load center</b>	<b>Fork Height</b>
<b>Fork Size</b>	<b>Battery</b>
<b>Self-Weight</b>	<b>Serial No.</b>
<b>MFG.Date</b>	

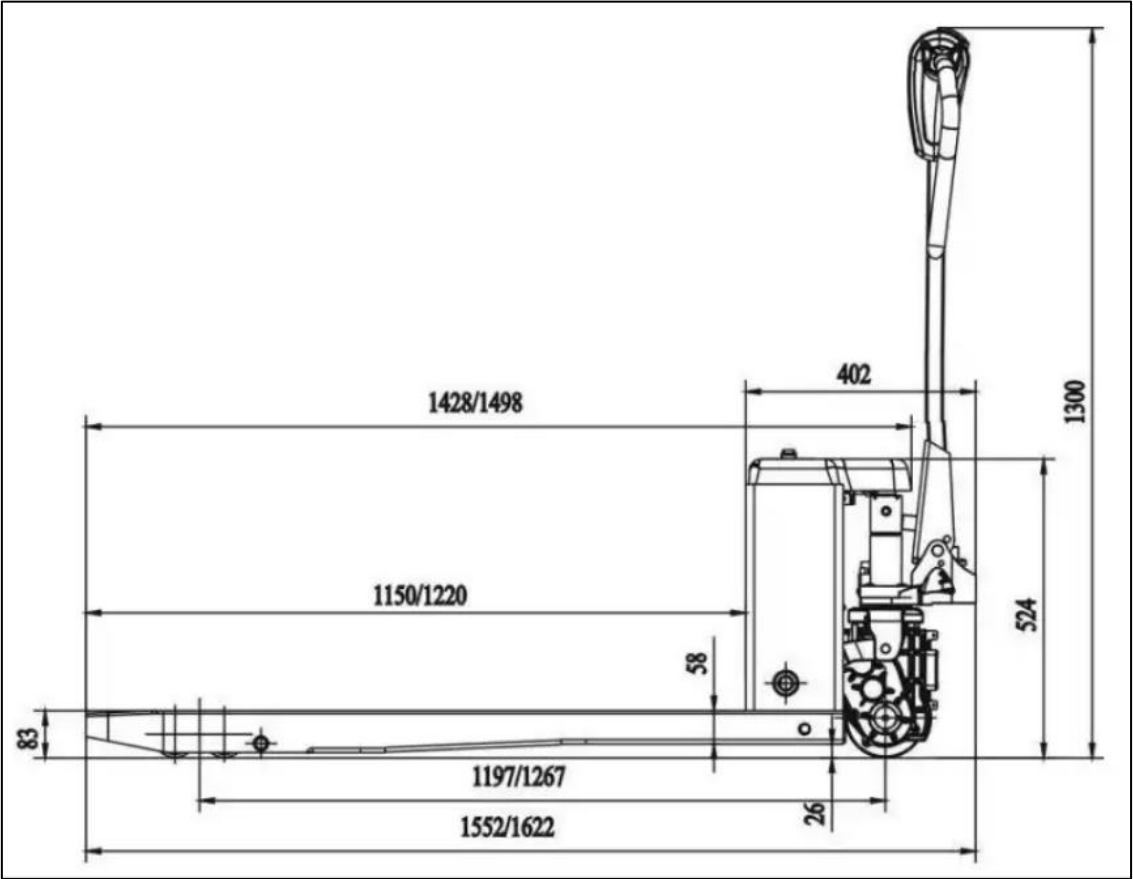
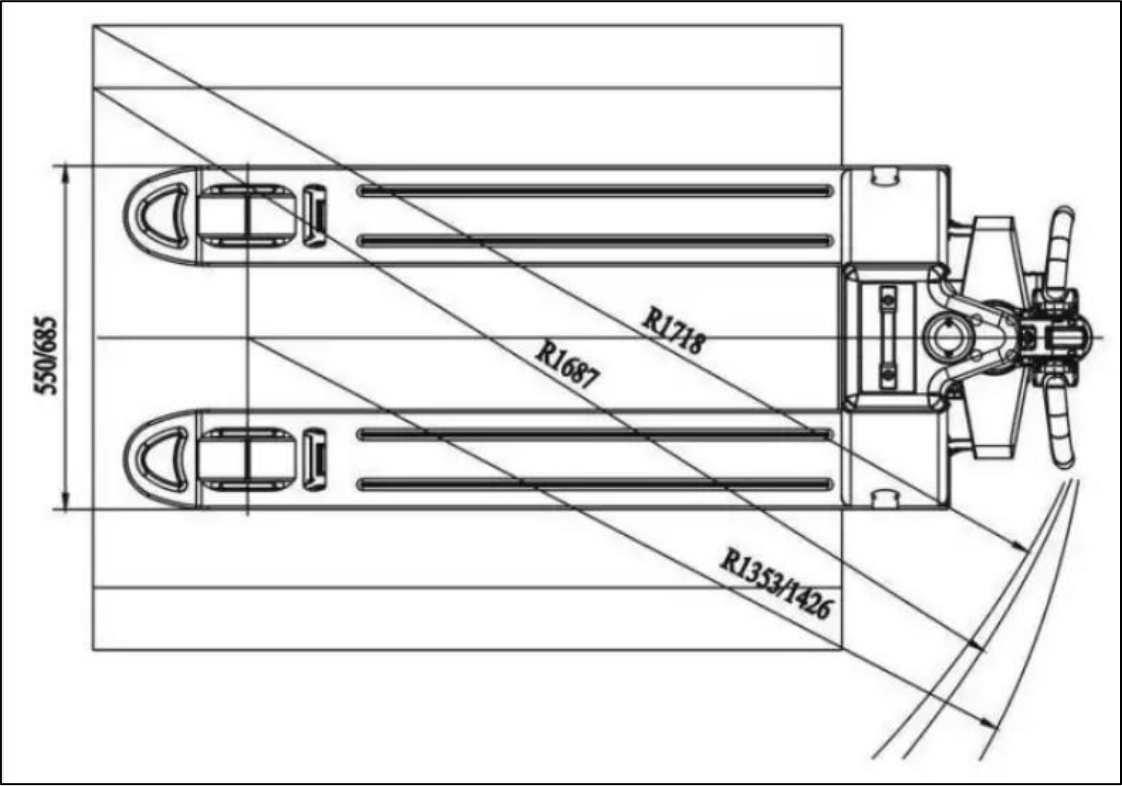


For queries to our technical support or to order spare parts, please quote the model number from the type plate.

- **Specifications:**

Model		ONE-XS 1500kg
Drive type		Electric
Load capacity	kg	1500
Load centre distance	mm	600
Fork length	mm	1150
Total length	mm	1552
Total height (with drawbar)	mm	1300
Width (total)	mm	550
Lifting height	mm	200
Fork length	mm	1150
Fork width	mm	550
Height from ground	mm	85
Aisle width for pallet 1000x1200 crossways	Branch(m m)	1718
Aisle width for pallet 800x1200 lengthways	Branch(m m)	1687
Turning radius	<i>Wa (mm)</i>	1353
Transport speed, loaded/unloaded	Km/h	4/5
Max. Climbing ability, loaded/unloaded	%	6/20
Drive motor power	KW	0.75
Hoist motor power	KW	0.5
Battery voltage/rated capacity	V/Ah	48/10
Brake		electromagnetic

- **Dimensions:**



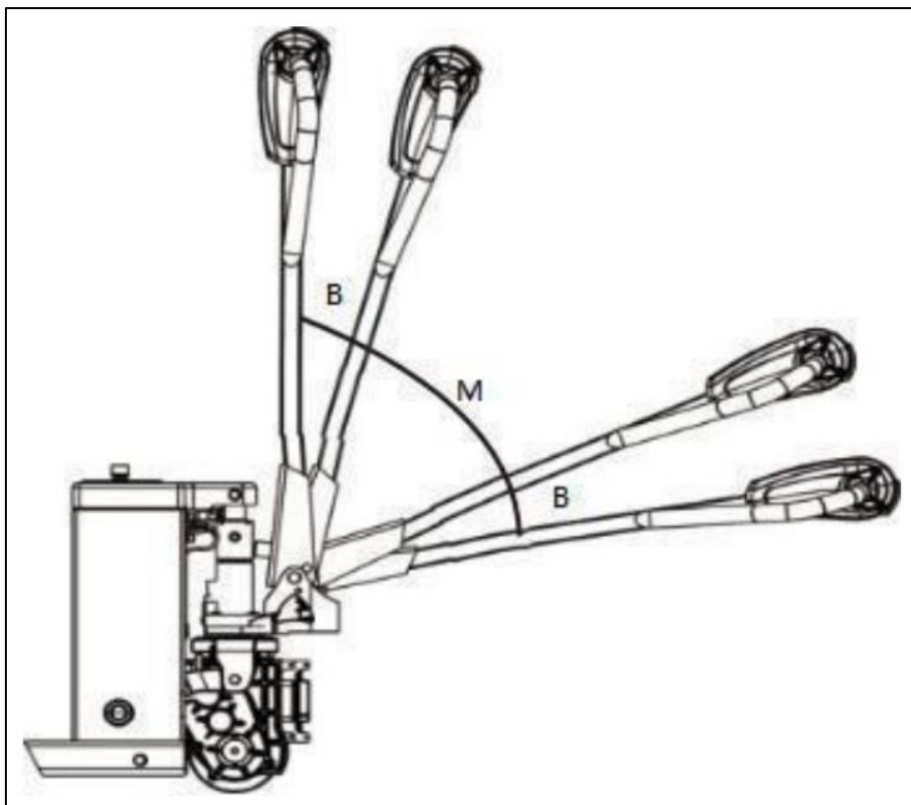
## II. Commissioning of the lift truck

The lift truck may only be operated with a battery. Check and test the lift truck before using it for the first time:

1. Check the equipment for visible defects
2. Check the hydraulic system for functionality
3. Insert the battery - Be careful not to damage the cables
4. Charge the battery
5. The rollers of the lift truck are adaptable and may therefore show slight deformations after a longer period of standstill. This is normal. The rollers will regain their original shape after a period of use.

- **Driving operation of the lift truck:**

Move the tiller down to the area marked "M". Move the drive lever back towards you to drive the lift truck forward. The higher the pressure on the travel lever, the faster the lift truck travels. The travel speed is therefore infinitely adjustable.



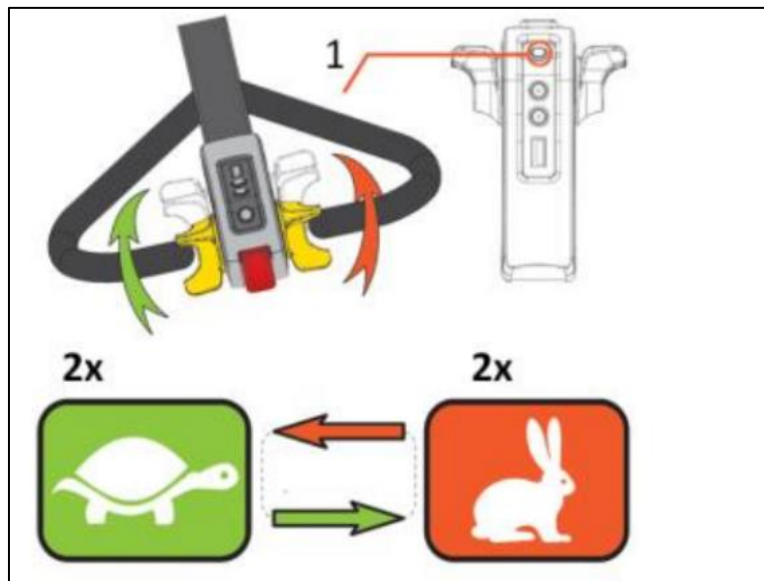
## Electric lifting truck ONE-XS 1500kg

Brakes of the lift truck:

1. Releasing the drawbar (regenerative braking)
2. Moving the drawbar to swivel range "B"
3. Moving the drawbar to the lowest position
4. Pressing the emergency stop button (only in emergencies!)

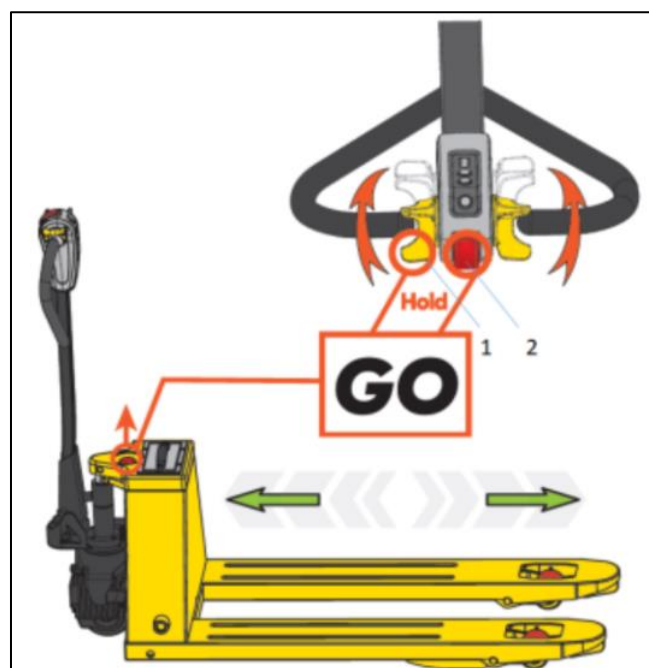
- **Special functions:**

1. Set slow / fast driving speed:



Hold down the horn (1) and press the driving lever forward twice to change from one speed to the other.

2. Driving with the drawbar upright:



Press emergency reverse switch and travel lever, then unlock emergency stop switch. The lift truck can now be moved with the tiller upright.

3. Brake release mode (brake off - emergency operation):



The brake release mode may only be used in emergencies! Keep horn (1) pressed and unlock emergency stop switch. The brake function is deactivated.

### III. Operating instructions

- **Safety regulations:**

1. The operator must be trained in the use of the lift truck by the respective department.
2. The operator must be trained in the use of the lift truck and any emergency situations that may arise.
3. The operator must have read and understood the operating instructions.
4. The operator is responsible for operating the lifting truck in accordance with the relevant rules and regulations.
5. The operator must wear appropriate safety shoes and suitable work clothing.
6. The lift truck may only be operated by authorised personnel.
7. It is prohibited to transport or lift persons or animals with the lift truck.
8. The operator is responsible for the safe use of the lift truck.
9. The lift truck must not be used if it has any defects in use, such as worn wheels, poor braking and the like. In such a case, the lift truck must first be inspected and serviced by a competent person.



Safety shoes must be worn when operating the forklift.



When assembling or disassembling the forklift, always wear protective goggles to avoid injury.



**Caution: If the truck is damaged or safety is compromised, discontinue use.**



**Caution: The truck can only be used on hard and smooth ground. Do not operate the truck in the following environmental situations:**

- The air contains dust or gas that can cause a fire or explosion.
- In cold storage or low temperature, salty or other corrosive environments.
- Rainy outdoor environment / operation on granules or green areas



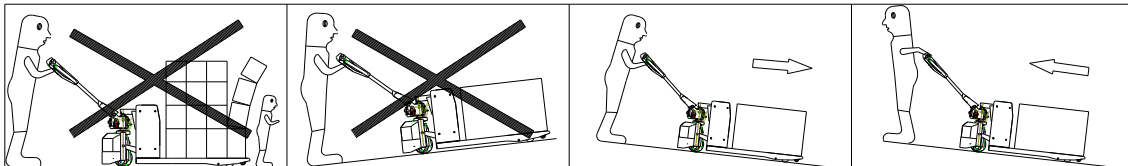
**Attention:**

- When operating the forklift truck, one should judge carefully and act responsibly.
- Do not operate the stacker by hand or with shoes that have been in contact with oil.
- The operator must not wear loose clothing or jewellery.



**Attention:**

- When operating the forklift, make sure that the floor has sufficient load-bearing capacity and that the load here is the sum of the weight of the forklift and the weight of the goods.
- If there is a protruding object on or around the lift truck that may cause injury to people or damage to the lift truck, increased caution is required.
- It is strictly forbidden for persons to be in the vicinity of the forklift truck if they can be injured, e.g., if goods fall down.



**Caution: The operator must be very careful when handling goods on slopes. The operator must work on the higher part of slopes as shown in the figure above.**



**Warning:**

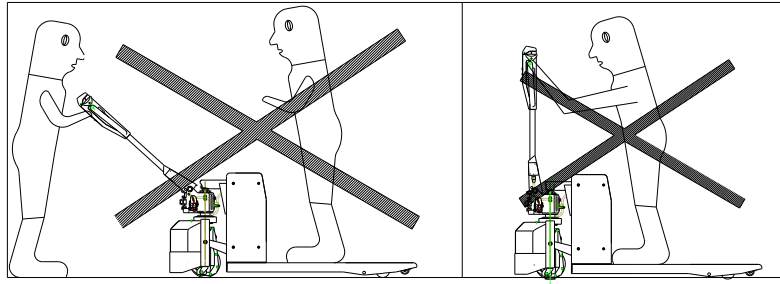
- When turning, high speed operation should be avoided to prevent the lift truck from tipping over.
- The goods must not be stacked too high so as not to block the line of sight.
- The braking process should be light and very careful to prevent the goods from slipping off the lifting truck and being damaged as a result.
- It is not permitted to turn the lift truck on an incline.
- Before pushing the lift truck into a lift, the operator must ensure that the lift can support the total weight of the lift truck and goods, the total weight of the operator and other persons in the lift. When entering the lift, make sure that the goods enter first and then the operator. When the lift truck and goods enter or exit the lift, no other persons may be in the lift.



**Caution:**

- The load weight should not exceed the rated load of the lift truck.
- When stacking the goods, do not stack the goods too high so that the goods do not fall over or the lift truck tips over during handling.
- It is strictly forbidden to use this lift truck for transporting people.
- No other persons should be in the area of the lift truck operation to avoid injury and death if the lift truck suddenly breaks down in operation.

- When operating the lever or pushing the lift truck, make sure that the hand is placed over the lever.



**Caution:**

- It is not permitted to operate the lift truck in the rain.
- When the lift truck is not in use, please switch off the general power supply.

• **Scope:**

This lift truck is suitable for use on hard and smooth indoor floors. It is not permitted to operate the lift truck for unsuitable uses.

- The ambient temperature must not exceed +45°C and must not fall below 0°C.
- The use of the lift truck in highly flammable or explosive areas is prohibited
- Use of the lift truck in acid-based and other corrosive environments is prohibited

• **Parking the lift truck:**

- When parking the lift truck, the forks must be lowered to the minimum height.
- It is not permitted to park the lift truck on the slope.
- It is not permitted to park the lift truck in an emergency lane.
- It is not permitted to park the lift truck in a place that blocks traffic or interferes with operations.
- Press the emergency stop button after you have safely parked the lift truck.

## IV. Battery operation and maintenance

- **Battery type and precautions for use:**

Battery Type : Lithium battery / Battery Voltage 48 V

Precautions:

1. The ambient temperature of the battery should be -10 ~ 45 °C
2. Fully charge and discharge every 3 months if the battery is stored for a longer period of time.
3. Fully charge the battery before first use or after prolonged storage.
4. Do not short-circuit the battery as this may permanently damage the battery.
5. The battery must not be burnt or destroyed, otherwise toxic gases will be released and there is a risk of explosion.
6. Do not weld the battery
7. Do not store the battery in an unfavourable environment, such as extreme temperatures, and avoid frequent overcharging / discharging
8. If the battery is hot, do not touch it until it has cooled down.
9. Hold the puller when unplugging the battery connector, the cable must not be pulled off directly
10. If the battery is hot after use and is being recharged, it should be cooled in a ventilated environment.
11. Do not put the battery in water
12. Do not try to cut, squeeze or hit the battery, the battery could heat up or ignite. The lye from the batteries is harmful to the skin and eyes and damages clothing.
13. Keep the battery away from children and contact a doctor immediately if you notice that the lye has been swallowed.

- **Charging the battery:**

1. Remove the plug from the battery.
2. Connect the charger plug. The battery can be charged in the lift truck as well as when removed.

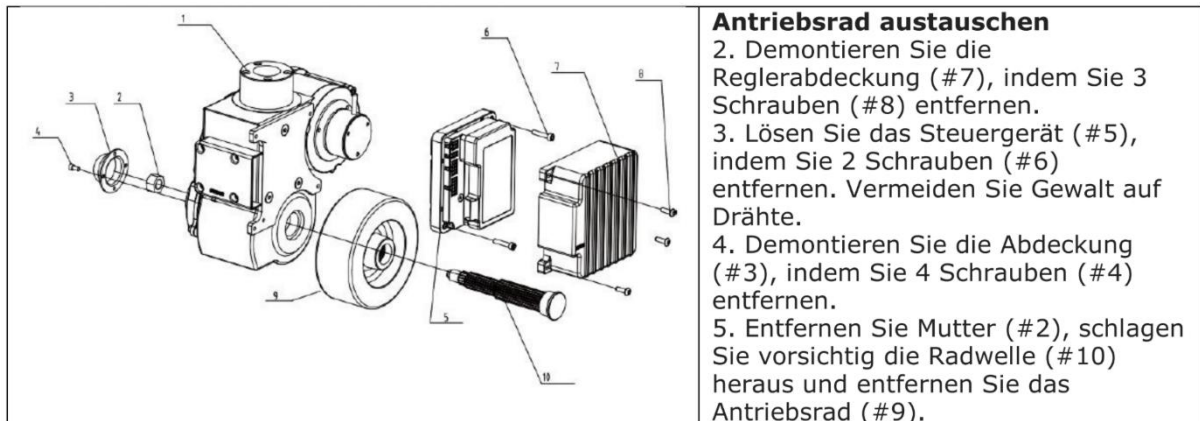


- **Precautions when charging the battery:**

1. Only use the lithium-ion charger supplied. Voltage of the charger 48V, Max. Charging voltage 54.6V, Charging current 6-7A
2. The battery must not be charged in reverse.
3. Stop charging immediately if the battery becomes hot during charging, recharge it after it has cooled down.
4. Hold the pull-off handle when plugging in the battery connector, do not pull off the cable directly

## V. Maintenance and servicing of the lift truck

Satisfactory operation of the lift truck depends on careful maintenance. If maintenance is neglected, people's safety may be endangered, and property may be damaged. When the lift truck is in use, regular inspection should be carried out and any points requiring maintenance should be rectified in good time. To ensure safety and prolong the life of the hand truck, do not operate the hand truck with defects.



Maintenance: Lift truck maintenance is usually divided into three levels, routine maintenance, level 1 maintenance and level 2 maintenance.

**Routine maintenance:** Once a day and the main content is to keep the surface clean and check if the power cord is damaged.

**Level 1:** Once a week. In addition to the contents of routine maintenance, maintenance should focus on whether the operation of the components is normal, whether the fasteners are loose, whether there is oil leakage, whether there is abnormal wear of the mechanical components, whether there is abnormal temperature rise or sparks in the electrical equipment, etc. If an abnormal situation is detected, adjustment and troubleshooting should be carried out.

**Level 2:** It should be carried out periodically and the overall inspection should be carried out in accordance with the following requirements:

a. Mechanical maintenance should be carried out every six months. The main tasks are to change the lubricating oil for the transmission gear and the drive wheel bearing, apply lubricant to various swivel joints, checking whether the fasteners are loose, whether the wheels rotate elastically, whether the fork rises and falls normally. The operating noise of the truck should not exceed 70db after maintenance.

b. Maintenance of the hydraulic system: Once every 12 months. Check that the oil cylinders are in normal condition, that there are no internal or external leaks and that the hydraulic oil is clean. The hydraulic oil is usually changed every 12 months. The ISO oil standard is used for hydraulic oil. When the ambient temperature is -5 ~ 40°C, HL-N32 is used, and when the ambient temperature is -35 ~ -5°C, HV-N20 low-temperature hydraulic oil is used. The waste oil from the replacement

Electric lifting truck ONE-XS 1500kg

should be done according to the relevant local regulations and laws. Check whether the operation of the load limiting valve is normal.

c. Electrical equipment maintenance: Should be carried out every three months to check whether the connections of the electrical equipment are reliable, whether the switches are working normally and whether the insulation of the electrical parts are in normal condition (The insulation resistance of the electrical equipment and the truck body should be greater than 0.5MΩ).

## VI. Troubleshooting

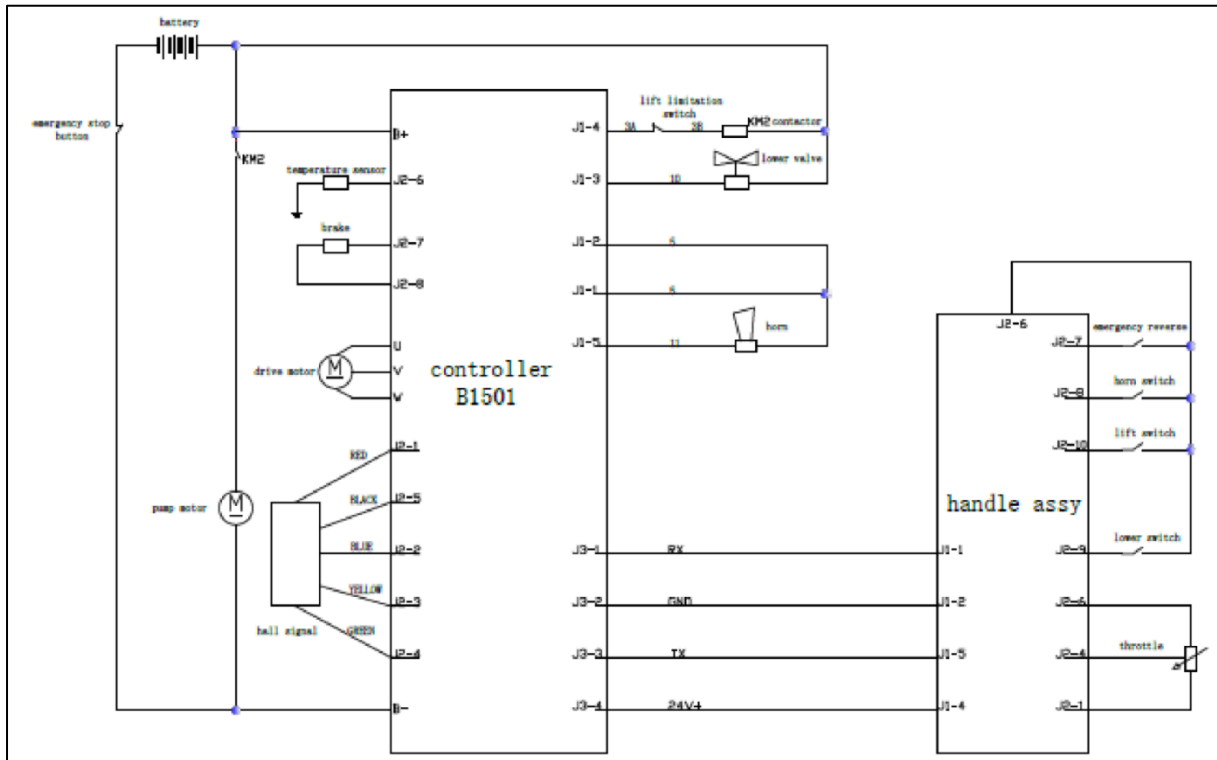
The following table shows some common faults of the truck in operation and troubleshooting : .

No.	Disruptions	Cause	Troubleshooting
1	Hydraulic oil leaks	<ol style="list-style-type: none"> <li>1. failed oil seal</li> <li>2. slight damage or wear to the surface of one or two components.</li> <li>3. loose connection</li> </ol>	<ol style="list-style-type: none"> <li>1. replace the oil seal</li> </ol> Replace the damaged components Tighten the connection again.
2	Fork does not lift	<ol style="list-style-type: none"> <li>1. Viscosity of hydraulic oil too high or hydraulic oil was not injected.</li> <li>2. Foreign matter in the oil.</li> <li>3. The hydraulic unit is damaged.</li> </ol>	<ol style="list-style-type: none"> <li>1. replace hydraulic oil</li> <li>2. remove foreign bodies in the oil or replace hydraulic oil.</li> </ol> Replace the hydraulic unit
3	Fork does not lower	<ol style="list-style-type: none"> <li>1. Manual lowering valve is not set</li> </ol>	<ol style="list-style-type: none"> <li>1. Adjust the position of the lowering valve</li> </ol>
4	The motor is not functional	<ol style="list-style-type: none"> <li>The power switch is not switched on.</li> <li>2. battery is completely discharged</li> <li>3. brake is not released</li> <li>4. burnt fuse</li> </ol>	<ol style="list-style-type: none"> <li>1. insert the key and switch on the power supply</li> <li>2. charging</li> <li>3. check the lift switch on the lever if it is pressed due to a collision and the brake switch has been reset.</li> <li>4. replace fuse</li> </ol>
5	The charger cannot charge	Damaged charger	Replace the charger

## VII. Environmental protection

The used batteries and hydraulic oil must be disposed of in accordance with the relevant local regulations and laws. Attention must be paid to environmental protection.

## VIII. Electrical circuit diagram





## EC Declaration of conformity

Producer:

**Trading EU GmbH**  
**Gruckinger Straße 4**  
**D - 85461 Bockhorn**

The producer hereby declares that the following product

Product name:

**Electric lifting truck with  
lithium-ion battery**

Type:

**ONE-XS 1500kg**

is in accordance with the following guidelines:

**EC machinery directive 2006/42/EC**

**Directive 2014/30/EU on electromagnetic compatibility**

Harmonized standards applied:

**EN ISO 12100:2010**

**EN ISO 3691-1:2015+A1:2020**

**EN 16307-1:2020**

**EN 1175:2020**

**EN13059:2002+A1:2008**

**EN 12053:2001+A1:2008**

**EN 12895:2015+A1:2019**

Name and address of the person authorized to compile the technical documentation:

Trading EU GmbH  
Gruckinger Str. 4  
D – 85461 Bockhorn

Bockhorn, 22.04.2026

Place, Date

A handwritten signature in black ink, appearing to read 'Michael Seibold'.

Managing Director Michael Seibold