

Operating instructions for electric trolley

BEAM



BEFORE OPERATING THIS PRODUCT, READ THIS MANUAL AND FOLLOW ALL SAFETY AND OPERATING INSTRUCTIONS.

Save these instructions for future reference

Electric trolley BEAM, with motor drive. Suitable for I-steel beams.

The motor-driven trolley is a lifting machine suitable for bridge models, single-beam models and rotating arm models and is often used for the assembly of machine equipment, the lifting and moving of goods, etc. in factories, mines, wharfs, warehouses and building yards.

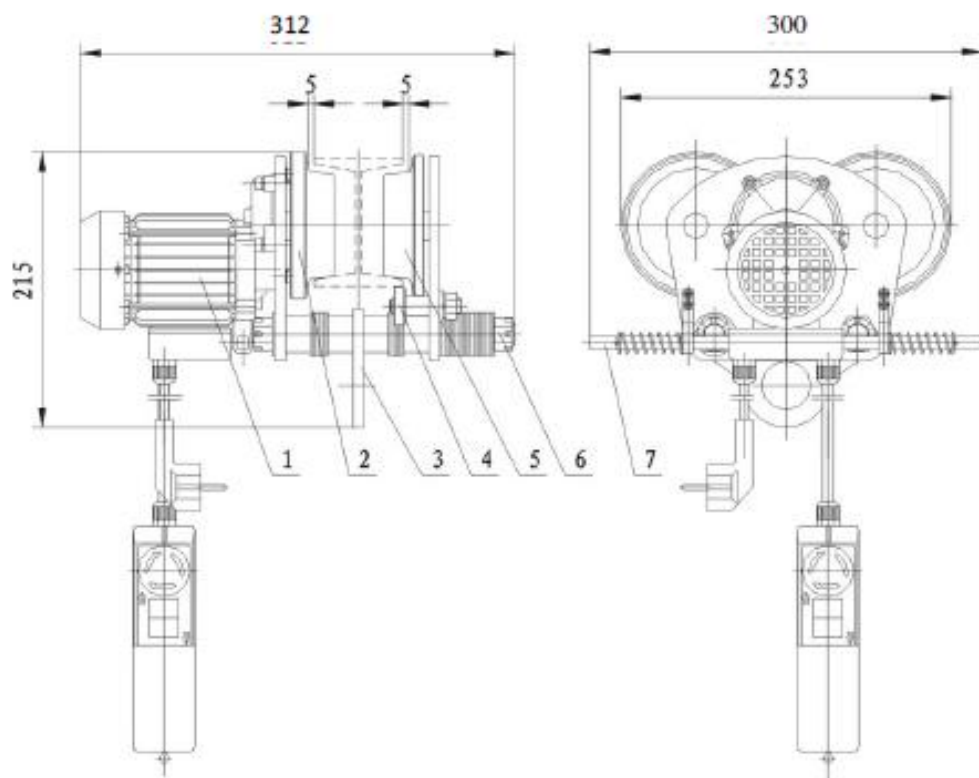
DESIGN

1. The electric trolley is fixed by the left driving wheel (S), the right driving wheel (2), the balance disc (4), the fixed threaded mandrel (6), the hook plate (3), the spacer (7) and the motor (I).
2. In order to meet the different widths of the beams, it is some washers to adjust the space. Place it inside or outside the main beam, depending on your requirements.

TECHNICAL DATA

	BEAM
Rated load weight (kg)	999kg
Rated voltage (V)	230V/50Hz
Input power (W)	200
Travel speed (m/min)	16
Minimum curve radius (m)	1
Beam width (mm)	68-110
Net weight (kg)	14,5
Current A	0,88
Degree of protection	IP54
Duty cycle	S3-25%-10min

*Duty cycle, e.g. S3-25%-10min: S3=intermittent periodic operation. This means that the machine may run for a maximum of 10 minutes. 25%(2.5min.)



Use:

1. The electric trolley is designed for indoor use
.
2. The electric trolley is the ideal device for your garage, shed or similar location for moving all types of loads.
3. This electric trolley cannot be used to transport hot molten masses. It is not designed for use in aggressive environments and low temperatures.
4. Read the operating instructions completely before using the trolley
.
5. Make sure that the operator knows how the machine works and how it should be operated.
6. The user must always work in accordance with the operating instructions
.
7. The rated capacity of the machine does not vary with the position of the load.
8. The trolley is not designed for continuous use. The duty rate is based on intermittent operation.
9. The value of the emission sound pressure level at the operator's position is lower than 70 dB.
10. Required power supply: voltage 230V±10%, frequency 50Hz±1%.
11. The trolley is designed to be used at ambient temperatures between 0°C and 40°C, relative humidity below 85%, and at an altitude of less than 1000 m above sea level
.
12. The trolley's transportation and storage temperature may be above -25°C and below 55°C. The maximum temperature must not exceed 70°C.

Safety instructions:

1. Always check that the voltage matches the voltage on the rating plate. If the mains voltage is not suitable, this can lead to abnormal operation or personal injury.
2. Your socket outlet must be earthed and your electrical system must be fitted with a residual current device.
3. It is forbidden to move loads in excess of the rated load of the trolley.
4. Use the equipment only for its intended purpose. It is forbidden to transport people with the electric trolley.
5. Do not pull on the cable to disconnect the plug. Protect the cable from heat, oil and sharp edges.
6. Do not attempt to move fixed or blocked loads.
7. Unplug the plug from the socket when not in use.
8. Keep children and other unauthorized persons away from the machine.
9. Make sure that the direction of travel of the electric trolley matches the direction indicated on the controls.
10. Inspect the trolley; check that the switches are in good working order.
11. Have your tool repaired by a professional; otherwise, it may pose a hazard to the user.
12. Avoid rapid on and off sequences.
13. Do not allow your attention to be diverted from the operation of the electric trolley.
14. Do not stand or work under a moving area.

INSTALLATION

1. The instructions are suitable for all models of the TD series electric trolley that we produce.

See the attached design for details of assembly.

2. After assembly, first fix the screw (1) on the rail of the steel beam by turning it for a light load on a trial basis

3. Voltage requirement: single-phase 230V/50Hz.

Use

1 Do not overload the trolley

2 It is forbidden to walk or work under the load while it is being lifted and moved.

3 Make sure that the center of gravity of the goods is in the same plane with the "I" steel beam or does not move.

4 If anything unusual is noticed during lifting and moving, stop it immediately and check it.

5 Any "I" steel beam that has warped, has a torque, is cracked, or does not meet the standards cannot be used as a monorail for electric trolley.

Maintenance:

Caution! Always make sure that the machine is not connected to the power supply when performing maintenance on the mechanism.

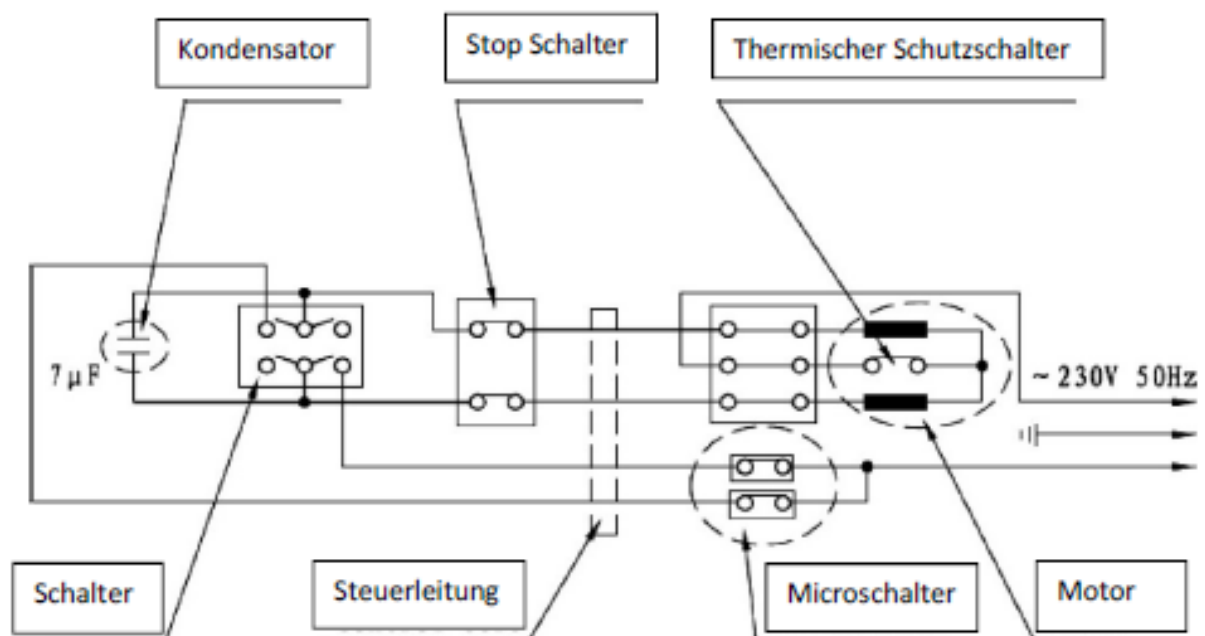
1. Check the power and control cables regularly.

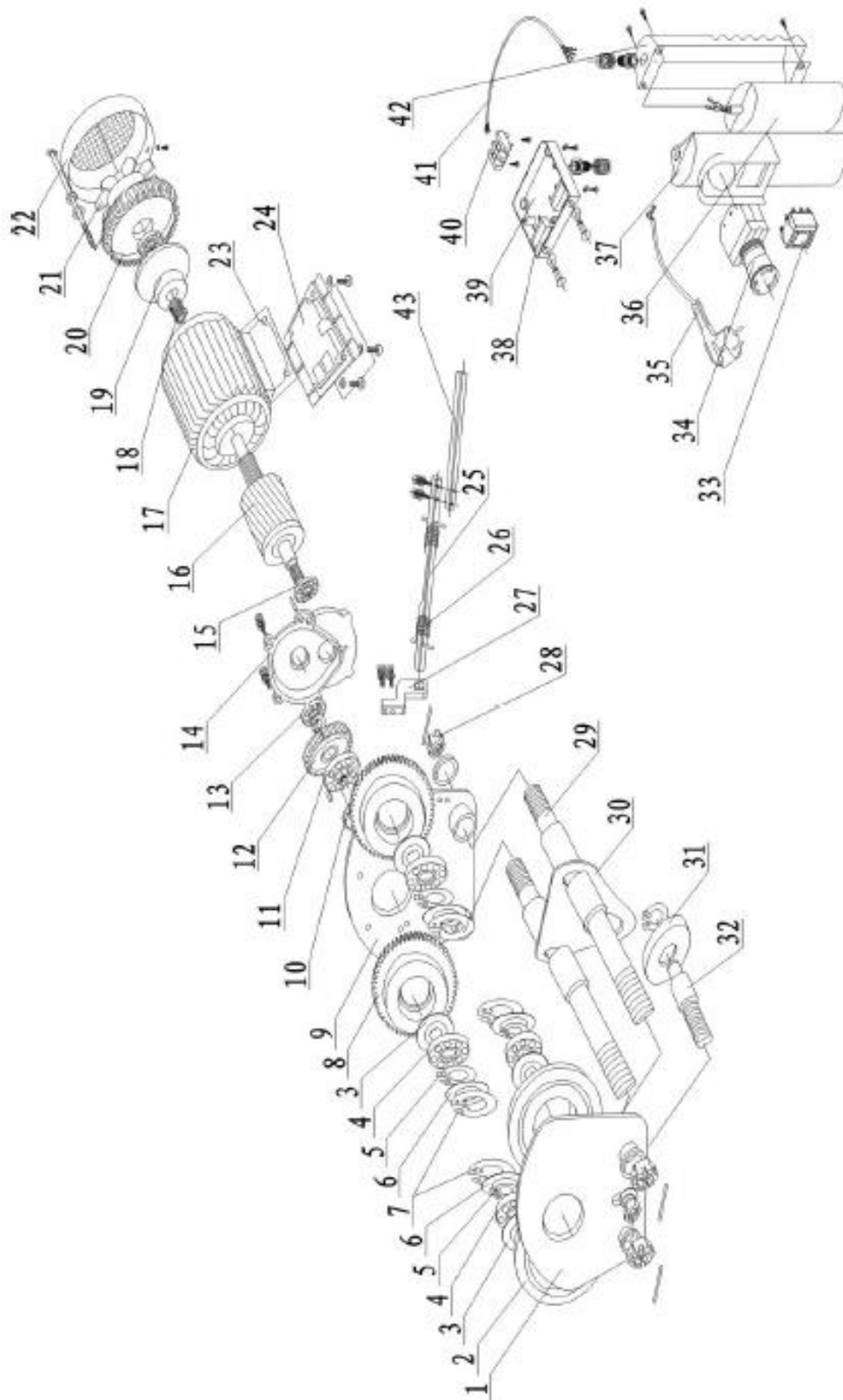
2. Regularly ensure that the trolley's end switches are working properly.

See below for the test. When the left (right) moving trolley moves the end rod, the motor must come to a stop.

3. Regularly add lubricating oil to the gearbox and check all mounting and fixing components.

SCHALTPLAN





No	Part Name	Qty	No	Part Name	Qty
1	Drive gear plate	1	23	Terminal box spacer	1
2	Drive gear	2	24	Bottom terminal box	1
3	Inner oil level holder	4	25	Limit place rod	1
4	Bearing (6204-2RD)	4	26	Limit place spring	2
5	Snap ring for shaft 020	4	27	Limit place support	2
6	Outer oil spacer	4	28	Hex nut M6*1.5	4
7	Snap ring for bore	4	29	Fixed screw mandrel	2
8	Action wheel	2	30	Hook plate	1
9	Action wheel plate	1	31	Balance wheel	1
10	Gear shaft	1	32	Balance shaft	1
11	Bearing (6204-2N)	4	33	Positive and negative switches	1
12	Large gear	1	34	Emergency stop switch	1
13	Bearing (61900)	1	35	Three-core plug	1
14	Front cover	1	36	Capacitor	1
15	Bearing (6000-2RS)	2	37	Handle cover	1
16	Rotor	1	38	Micro switch	2
17	Stator	1	39	Terminal box	1
18	Spring	1	40	Terminal block	1
19	Brake disc	1	41	Four-core cable	1
20	Gear cover	1	42	handle base	1
21	Ventilation wing	1	43	limit fastener	2
22	Blower cover	1			