

Operating instructions for manual trolleys

TROLLEY, GEARED



BEFORE OPERATING THIS PRODUCT, READ THIS MANUAL AND FOLLOW ALL SAFETY AND OPERATING INSTRUCTIONS.

Save these instructions for future reference.

Installation:

Measure the actual width of the beam. Install the required number of spacers evenly on the inside of the side plates so that the dimension between the suspension flanges is 6 mm 1/4 (max) greater than the width of the runway beam. Install the remaining washers outside the side plates and attach nuts to the hanger pins. At least one washer must always be placed on the inside and outside of each trolley side plate (see diagram N).

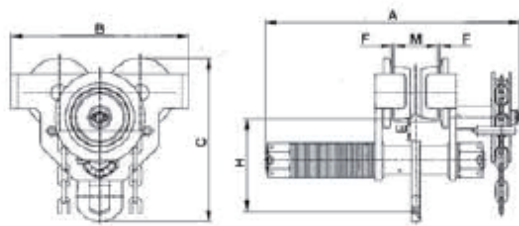
Loosen the nuts on the hanger pins and spread the side plates apart so that the wheels can be slid over the track beams. Screw the nuts down tight against the washers, then hang a light load on the carriage to make sure that all four wheels contact the track beam, screw the nuts down tight against the washers, and then lock them with locking devices. Nuts must be tightened

When assembling the gearbox slide with the minimum carrier width, the suspension pin must be moved so that it does not cover the handwheel. Hang the maximum safe working load on the trolley and then slowly run the unit along the entire length of the raceway to ensure satisfactory operation.

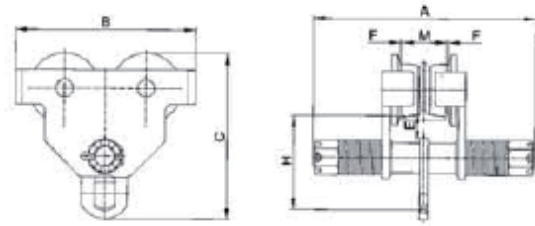
WARNING

To prevent property damage and/or personal injury:

- 1. Do not exceed the maximum capacity of the cart.**
- 2. Do not use the cart to lift or transport people.**
- 3. Do not use a damaged or malfunctioning cart.**
- 4. Do not leave load on cart unattended unless special precautions are taken.**
- 5. Do not lift or transport loads above people and ensure that all personnel stay clear of the load being carried.**



GEARED TROLLEY



PLAIN TROLLEY

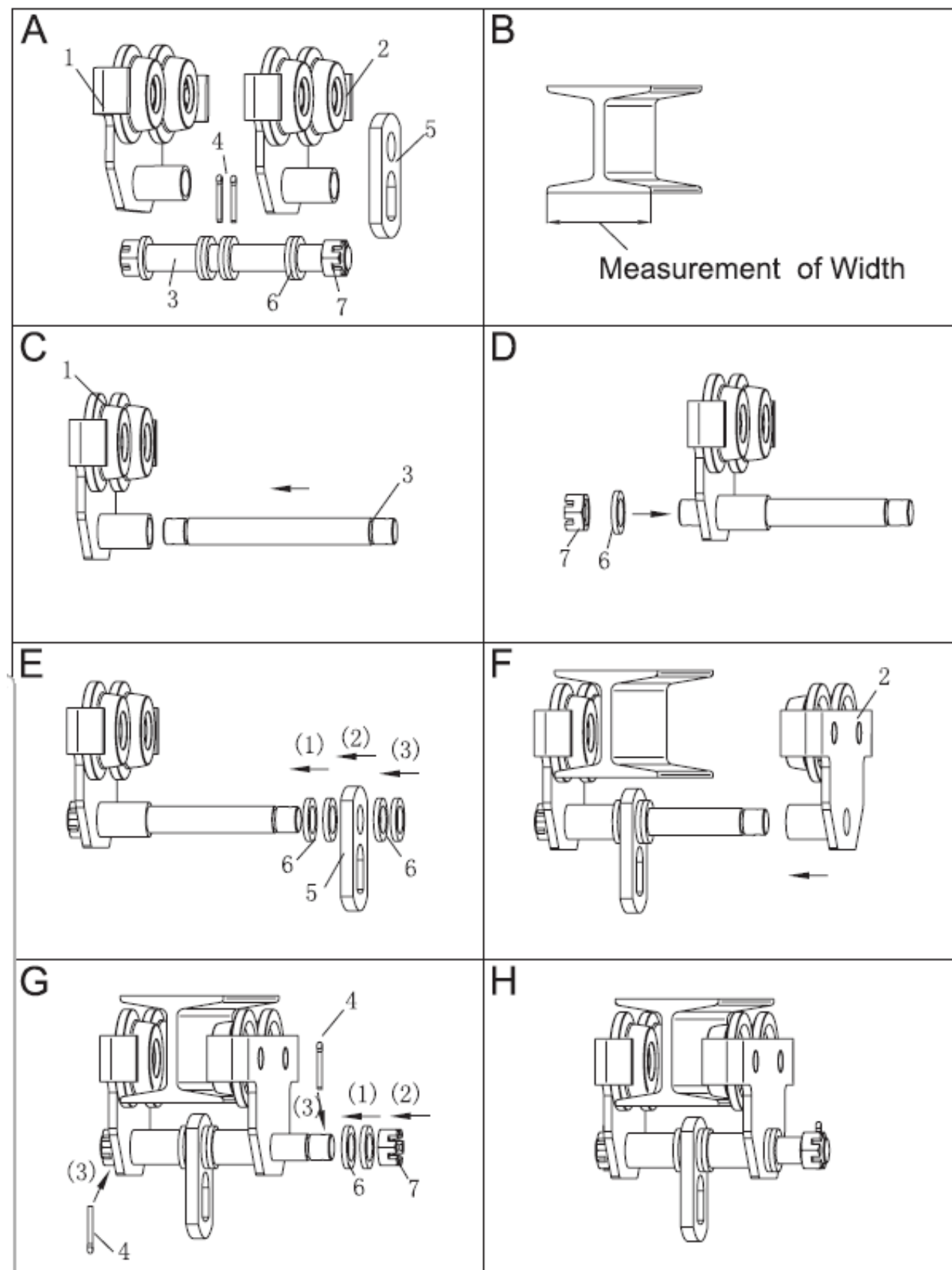
PLAIN TROLLEY SERIES SPECIFICATIONS

Capacity	I-Beam Recommended [mm]	N. W. IKGS	A	B	C	E	H	Volume mm
0.5t	75-125	6	198	204	188	23	113	215*75*155
	75-180	7	251					280*75*143
1t	75-125	8	220	250	214	11	118	260*80*180
	75-180	9	262					285*80*180
2t	100-150	11	243	270	227	14	125	280*155*210
	100-200	13	293					325*105*210
3t	100-150	22	268	315	304	8	165	325*115*235
	100-250	23	318					370*115*235
5t	125-175	30	305	358	334	21	183	375*120*285
	125-250	31	380					420*140*285
10t	110-200	79	405	430	434	36	250	500*280*350
	110-300	81	503					

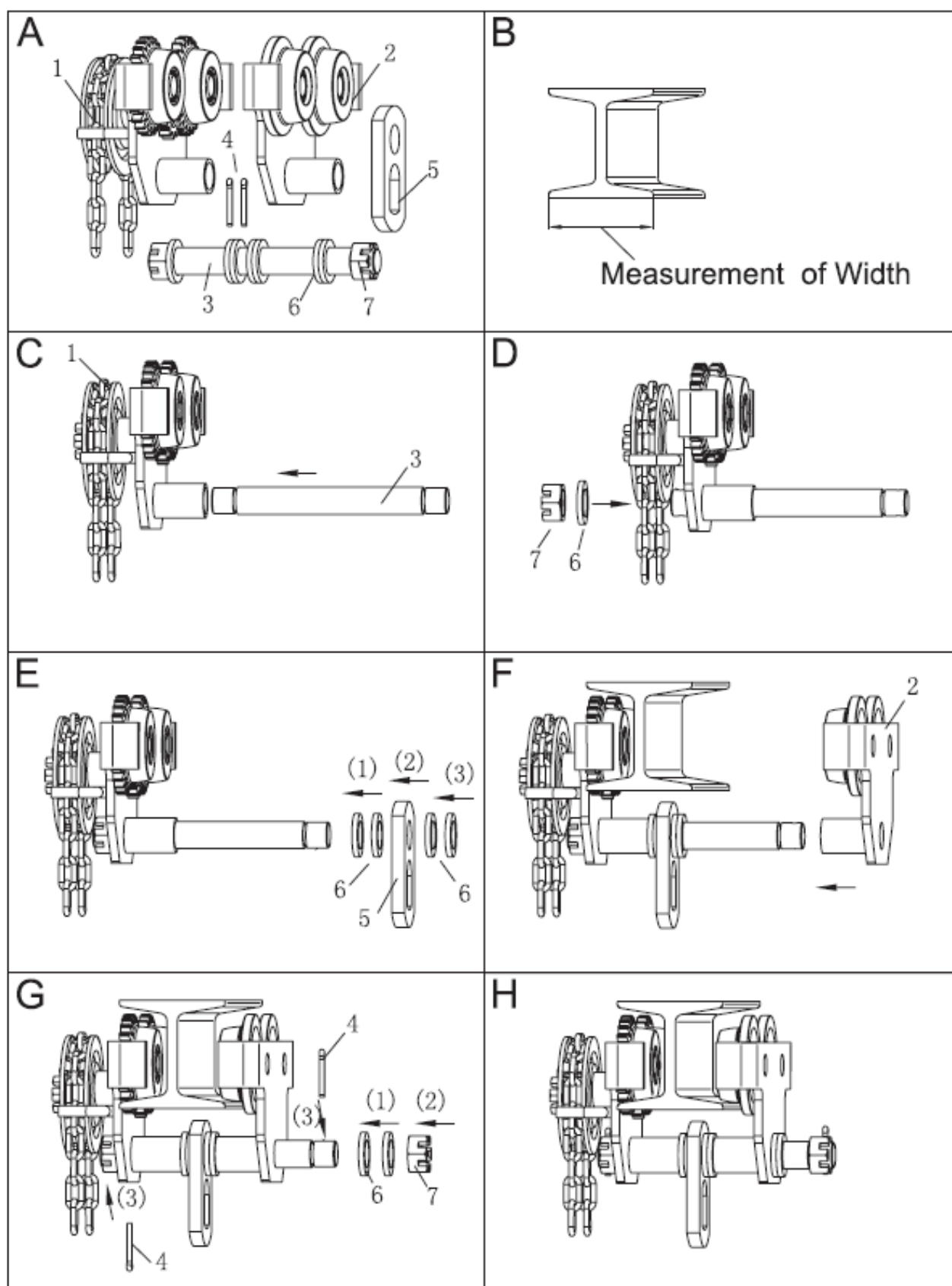
GEARED TROLLEY SERIES SPECIFICATIONS

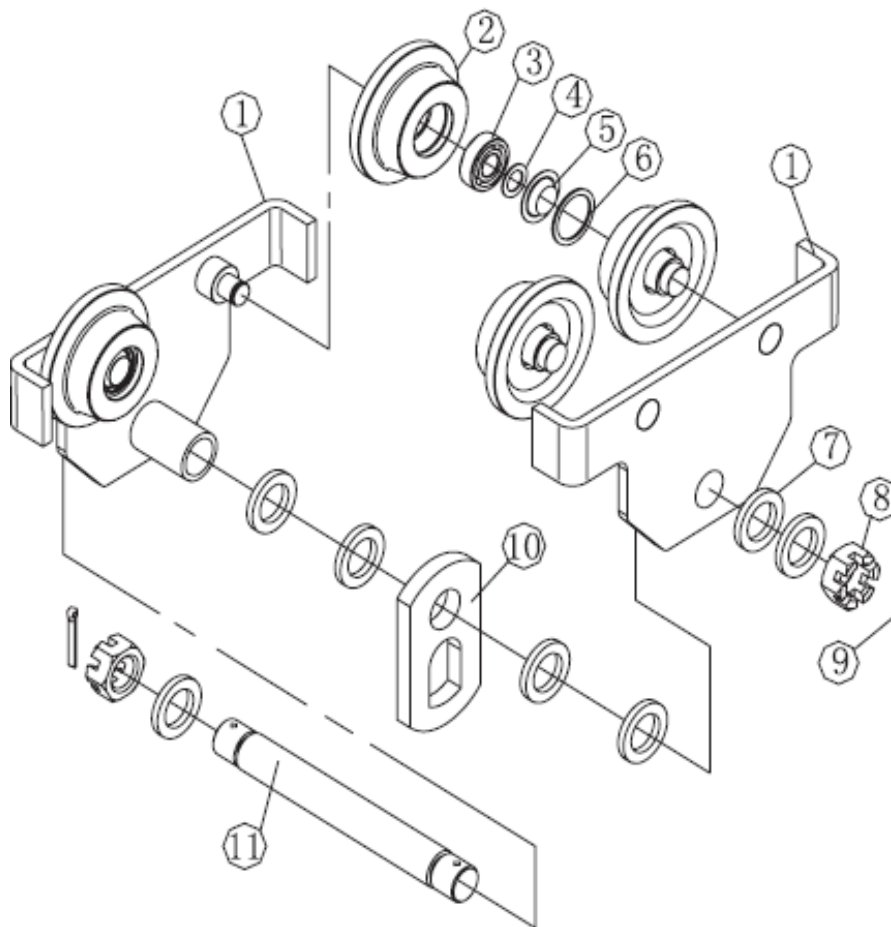
Capacity	I-Beam Recommended [mm]	N. W. IKGS	A	B	C	E	H	Volume mm
0.5t	75-125	9	271	204	188	23	113	215*150*140
	75-180	10	326					280*150*140
1t	75-125	11	258	250	214	11	118	260*145*160
	75-180	12	304					285*145*160
2t	100-150	15	284	270	227	14	125	280*155*185
	100-200	16	340					325*165*185
3t	100-150	25	312	315	304	8	165	325*185*210
	100-250	25.5	362					370*185*210
5t	125-175	33	365	358	334	21	183	375*200*255
	125-250	34	439					420*225*255
10t	110-200	82	458	430	434	36	250	500*280*350
	110-300	83	556					

PLAIN TROLLEY ASSEMBLY INSTRUCTIONS

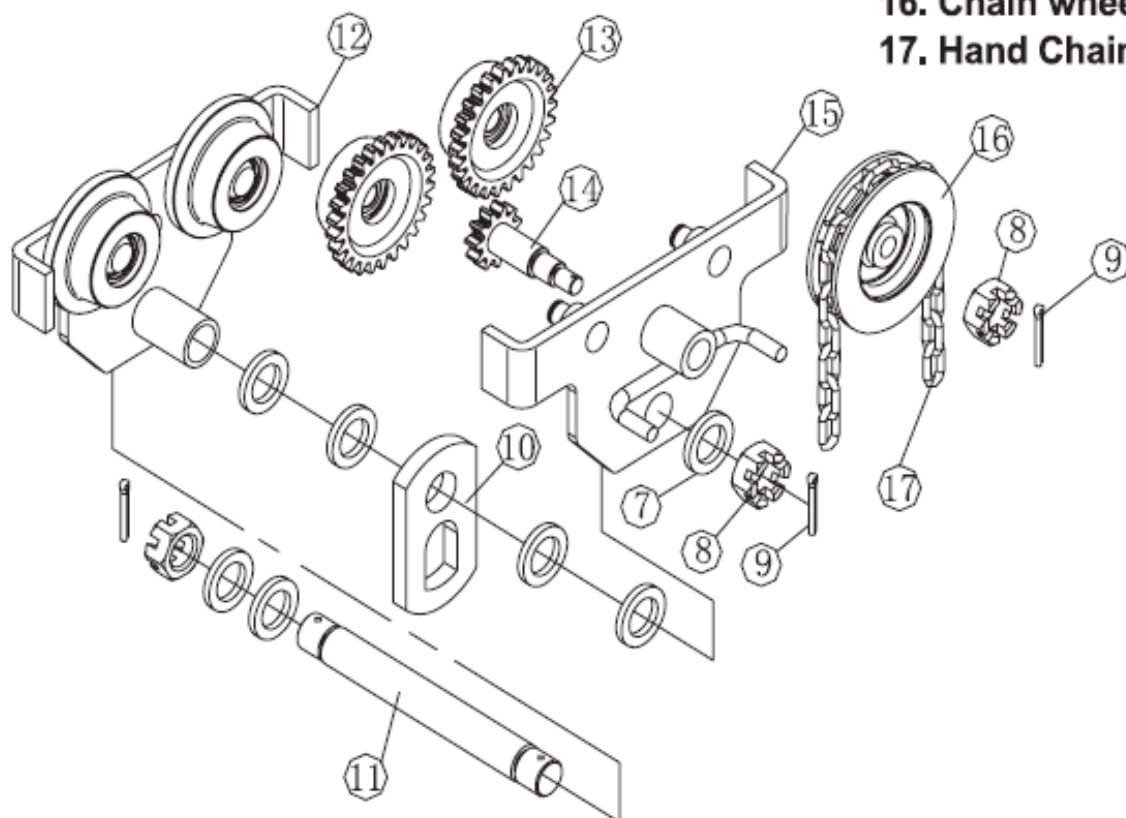


GEARED TROLLEY ASSEMBLY INSTRUCTIONS





1. Side plate assembly
2. Driven wheel
3. Bearing
4. Retaining ring
5. Bearing cap
6. Bearing ring
7. Spacer washer
8. Hex nut
9. Splitpin
10. Suspension plate
11. Suspension pin
12. Left side plate assembly
13. Geared wheel
14. Driven spindle
15. Right side plate assembly
16. Chain wheel
17. Hand Chain



Safety instructions:

1. General safety precautions

- Load limit: Check the load capacity of the trolley and make sure that the load to be lifted does not exceed it.
- Visual inspection: Check the trolley before each use for damage, wear or other abnormalities.
- User competence: Only trained personnel may operate the trolley.
- Load positioning: The load must always be centered and securely suspended in the trolley to avoid sloping loads.

2. Installation and assembly

- Suitable beams: Make sure that the beam on which the trolley is running is stable, straight and suitable for the intended load.
- Check assembly: Make sure that the trolley is correctly assembled and securely attached to the beam.
- Screw tightness: Regularly check the tightness of screws, bolts and nuts.

3. Operation

- Smooth movement: Move the trolley slowly and evenly to avoid swinging or tipping the load.
- Do not stand under load: People must never stand under suspended loads.
- Avoid jerky movements: Avoid jerky movements or abrupt pulling to avoid destabilizing the load and the trolley.
- Permissible inclinations: The trolley must not be operated on steep beams or in unsuitable environmental conditions (e.g. strong vibrations).

4. Maintenance and repair

- Regular lubrication: Lubricate the moving parts regularly according to the manufacturer's instructions to ensure smooth operation.
- Inspection: Have the trolley regularly inspected by an expert.
- Replace wear parts: Replace worn or damaged parts immediately.

5. Prohibited actions

- No overloading: Never exceed the specified load capacity.
- Improper use: Do not use the trolley for purposes other than moving loads (e.g. climbing, pulling people).
- Avoid tampering: Do not make any unauthorized modifications or repairs to the trolley.

•

6. Emergency measures

- Emergency plan: Provide clear instructions and an emergency plan in case of a defect or accident.
- Stop in case of problems: Stop operation immediately if irregularities occur.

These instructions are for general guidance. Please read the specific operating instructions of the manufacturer for further details and regulations.