

TABLE 1000kg / 10010331 / HIW2.0EU
TABLE 2000kg / 10010331 / HIW4.0EU



ISO9001
ISO14001



Original of the OPERATING INSTRUCTIONS

Keep for future use

Address of the manufacturer

Trading EU GmbH
Gruckingerstrasse 4
D - 85461 Bockhorn

Tel.: +49 (0) 8123 - 989 0 900
Fax: +49 (0) 8123 - 989 0 904
E-mail: info@tradingeu.de
Web: www.tradingeu.de

Trading EU GmbH, Gruckinger Str. 4, D - 85461 Bockhorn
www.tradingeu.de

Dear customer

This powerful lift table is an indispensable product for everyday lifting work.

When using electric platforms, some safety measures must be taken to avoid injury to persons and damage to the product.

Electric platforms should only be used by instructed personnel.

Please read these instructions and keep them in a safe place so that they are always to hand.

We accept no liability for accidents and damage caused by non-observance of these instructions!

Only suitable for commercial, industrial or professional applications.

Operating instructions

Document number:	Electric platform Pallit TABLE
Version:	1.0
Creation date:	01.01.2020
Last change:	01.09.2022
Model:	TABLE 1000kg / 10010331 / HIW2.0EU TABLE 2000kg / 10010331 / HIW4.0EU
Year of manufacture:	2022

Customer entries

Inventory no:	
Location:	

Storage

The operating instructions must be kept in the responsible specialist department. They must always be at hand.

Content

I. Specifications 4

II. Safety instructions 4

III. Operating guidance and maintenance.....6

IV. Protection of the environment6

V. Applications7

VI. Troubleshooting8

VII. Electrical system9

VIII. Parts lists 12

I. Specifications

TYPE		TABLE 1000kg	TABLE 2000kg
Capacity	Kg	1000	2000
Max. height	mm	1010	1010
Min. height	mm	190	190
Dimension of the table	mm	1300x800	1300x800
Lifting speed	S	26	40
Lower speed	S	20	30
Pump electric current	L/min	3	3
Oil tank	L	2	3
Pump station		AC3x380, 750W	AC3x380, 750W
Weight	Kg	220	280

II. Safety instructions



CAUTION! Never use the lift table to lift/lower people or animals!

1. This appliance may only be operated by qualified, trained persons.
2. Keep the immediate working environment clean. Untidy work areas and can cause accidents.
3. Please take environmental influences into account. Ensure that your workplace is well illuminated. Do not use the unit in a flammable or explosive environment.
4. Protect yourself from electric shocks. Avoid contact with earthed surfaces (e.g., pipes, radiators, cookers, or refrigerators).
5. Keep this unit away from unauthorized persons. Prevent others from touching during operation. Ensure that persons keep a sufficient distance from the working area.
6. The lift table must not be overloaded under any circumstances! Please do not exceed the maximum load capacity (see type plate).
7. One-sided loading of the lift table is not permitted. Ensure even load distribution.
8. It is forbidden to assemble and use the lift table on uneven ground or in an inclined position. Place the device on a level, clean surface.

9. Do not use the unit in aggressive environments or at low temperatures.
10. Wear safe working clothes. Never wear loose clothing or jewellery; these could be caught by the moving parts of the machine. Wearing safety equipment (such as rubber gloves, non-slip footwear, ear and hair protection, etc.) is recommended when working.
11. When the lift table is not in use, the platform should be lowered.
12. If the appliance is not used for a long time, disconnect it from the mains.
13. Always disconnect the mains plug before carrying out maintenance work.
14. Never reach under the scissor unit with your hand or foot. There is a risk of injury.
15. Do not lift people. Persons may fall down and suffer serious injury.
16. Always work carefully and with great caution. Do not operate it when you are tired or under the influence of medication, alcohol, drugs, or other narcotics.
17. Check the components for damage. Before commissioning, check the unit for any damaged components, especially damaged safety components, to ensure proper operation and fulfilment of the intended function. Check the adjustment and connection of moving parts, check all components for breakage, connection and other conditions that may affect proper operation. Damaged components, especially damaged safety devices, must be repaired or replaced by a specialist, unless otherwise stated in these operating instructions. Please have damaged switches repaired by a specialist. Never use the machine if it cannot be switched off or on with the main switch.
18. Use only the accessories recommended by the manufacturer. Use of accessories or attachments other than those described in this manual may result in injury.
19. Have your lift table repaired only by qualified personnel or by the manufacturer. The use of original spare parts is mandatory; otherwise, serious injuries may occur.
20. Make sure to operate the emergency stop switch to stop the machine in case of a dangerous emergency situation. Return the red switch head to the operating state in the direction of the arrow (clockwise) when the danger has passed.
21. The unit is equipped with a pinch protection under the platform. This is a safety-relevant component. Check the function regularly. Do not disable the function by fixing the safety frame or otherwise bypassing the circuit. There is an increased potential for injury if this is done.
22. To avoid leakage during use of the products, the user should prepare some absorbent materials (wood scraps or dry dust cloths) to soak up the leaking oil in time. To avoid further pollution of the environment, the used absorbent materials should be handed in to special departments of the local authorities.

III. Operating guidance and maintenance

1. Emergency switch

When you press this switch, it turns the power off, and if you then turn it clockwise, the power is restored.

2. Lifting switch

When you press this switch, the table rises; when you release your hand, the table no longer rises.

3. Lowering switch

When you press this switch, the table lowers; when you release your hand, the table stops lowering.

→ **The table cannot lift or lower when the function of safety protection frame starts. When you press down the lifting or lowering switch, the table will lift or lower again.**

4. Hydraulic oil

Please check the oil level every six months. The oil can be hydraulic oil: ISO VG 32(GB11118-89), its viscosity should be 32cSt at 40°C, total volume is about 4.0lt.

5. Daily check and maintenance

It is necessary to check the truck daily. Special attention should be paid to the rollers, the axles, as thread, rags, etc., it may block the rollers; the scissors and the table should be checked, they may be deformed; the table should be unloaded and lowered in the lowest position when the job is over.

6. Lubrication

Use motor oil or grease to lubricate all movable parts.

IV. Protection of the environment



Worn-out electrical appliances are recyclable and do not belong in household waste! Please actively support us in conserving resources and protecting the environment by handing in this appliance at the collection points (if available).

1. Environmentally hazardous waste such as batteries and electronic equipment have negative effects on the environment or health if not handled properly.
2. Waste packages should be sorted by materials and disposed of in designated waste bins collected by local environmental protection authorities. In order to avoid environmental pollution, it is forbidden to throw away the waste indiscriminately.
3. To avoid leakage during use of the products, the user should prepare some absorbent materials (wood scraps or dry dust cloths) to soak up the leaking oil in time. To avoid further pollution of the environment, the used absorbent materials should be handed in to special departments of the local authorities

V. Applications

- **Preparation**

Before commissioning, you should make some preparations:

- Make sure that the voltage of your mains supply matches the voltage indicated on the rating plate and that the appliance is fitted with the correct mains plug.
- Before connecting to the mains, press the emergency stop switch on the unit

Caution: Make sure that no persons are standing on the lift table or the immediate working area.

- Connect the unit to the mains.

Caution: The power cable must not be live but should have enough reserve. In case of a longer distance, use an extension cable. Do not run over the cable as this may damage the cable. A damaged cable can lead to an electric shock! A damaged cable may only be repaired by qualified personnel.

- Before official commissioning, please first carry out an idle test and check the functions:
 - a. The up/down switch function ensures control of raising and lowering.
 - b. The function of the platform shutdown strap to ensure that the shutdown works when lowering.
 - c. Abnormal noises during commissioning.
 - d. Tightness of the hydraulic lines
 - e. Obvious damage to the platform
 - f. Obvious damage to hydraulic or power lines
- Check the platform before commissioning - avoid commissioning if there is obvious damage

VI. Troubleshooting

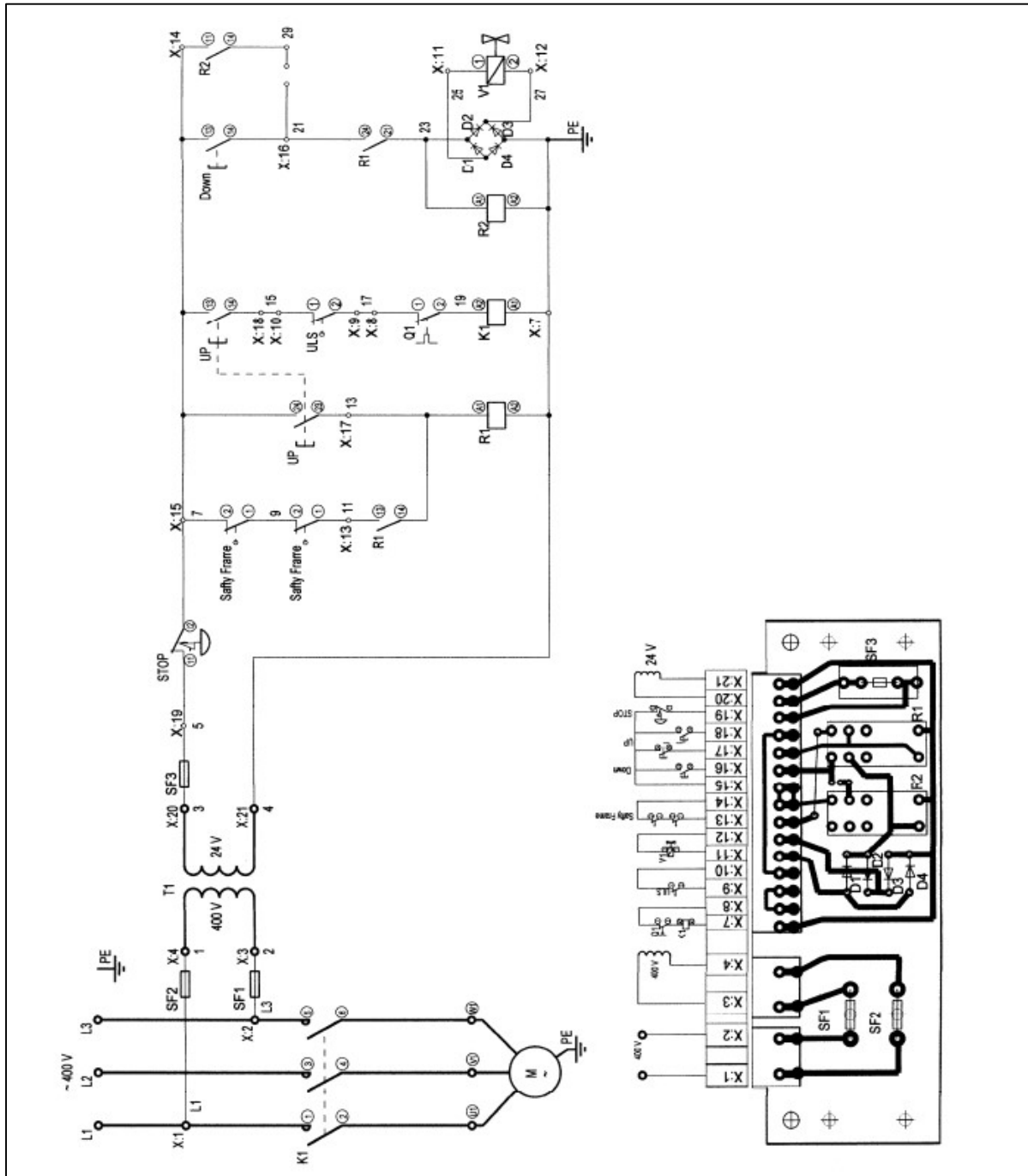
No	Problem	Explanation	Solution
1	The table cannot be raised to the maximum height.	<ul style="list-style-type: none"> -The hydraulic oil is not sufficient. -The position of the drive switch. 	<ul style="list-style-type: none"> -Refill hydraulic oil -Set the position of the driving switch.
2	The table cannot be lifted	<ul style="list-style-type: none"> -No or too little hydraulic oil. -Electromagnetic valve cannot function. 	<ul style="list-style-type: none"> -Refill oil -Change of the electromagnetic valve
3	The motor does not start	<ul style="list-style-type: none"> -The emergency switch is turned off. -The connection of the electric cable is loose. -The contactor of the DC motor is damaged. 	<ul style="list-style-type: none"> -Turn the emergency switch clockwise. -Tighten; -Replace it with a new one.
4	The platform cannot be lowered	<ul style="list-style-type: none"> -The piston rod or mast is deformed due to partial load on one side or overload. -The fork has been held in the high position for a long time, causing the piston rod to wear and rust and jam. -The pump's drain valve is impaired in function due to abrasion. 	<ul style="list-style-type: none"> -Replace with a new copy -Keep the fork in the lowest position when not in use and pay special attention to the lubrication of the piston rod. -Replace it with a new one.
5	Leakage	<ul style="list-style-type: none"> -The sealing elements are worn or damaged. -Some parts are cracked. 	<ul style="list-style-type: none"> - Replace it with a new one. - Replace it with a new one.
6	The platform lowers itself	<ul style="list-style-type: none"> -Contaminants in the oil cause the drain valve to no longer close tightly. -The sealing elements are worn or damaged. -The drain valve is damaged. 	<ul style="list-style-type: none"> - Replace it with a new one. - Replace it with a new one. - Replace it with a new one.

NOTE: Do not attempt to repair the lift table yourself unless you are trained and authorised to do so.

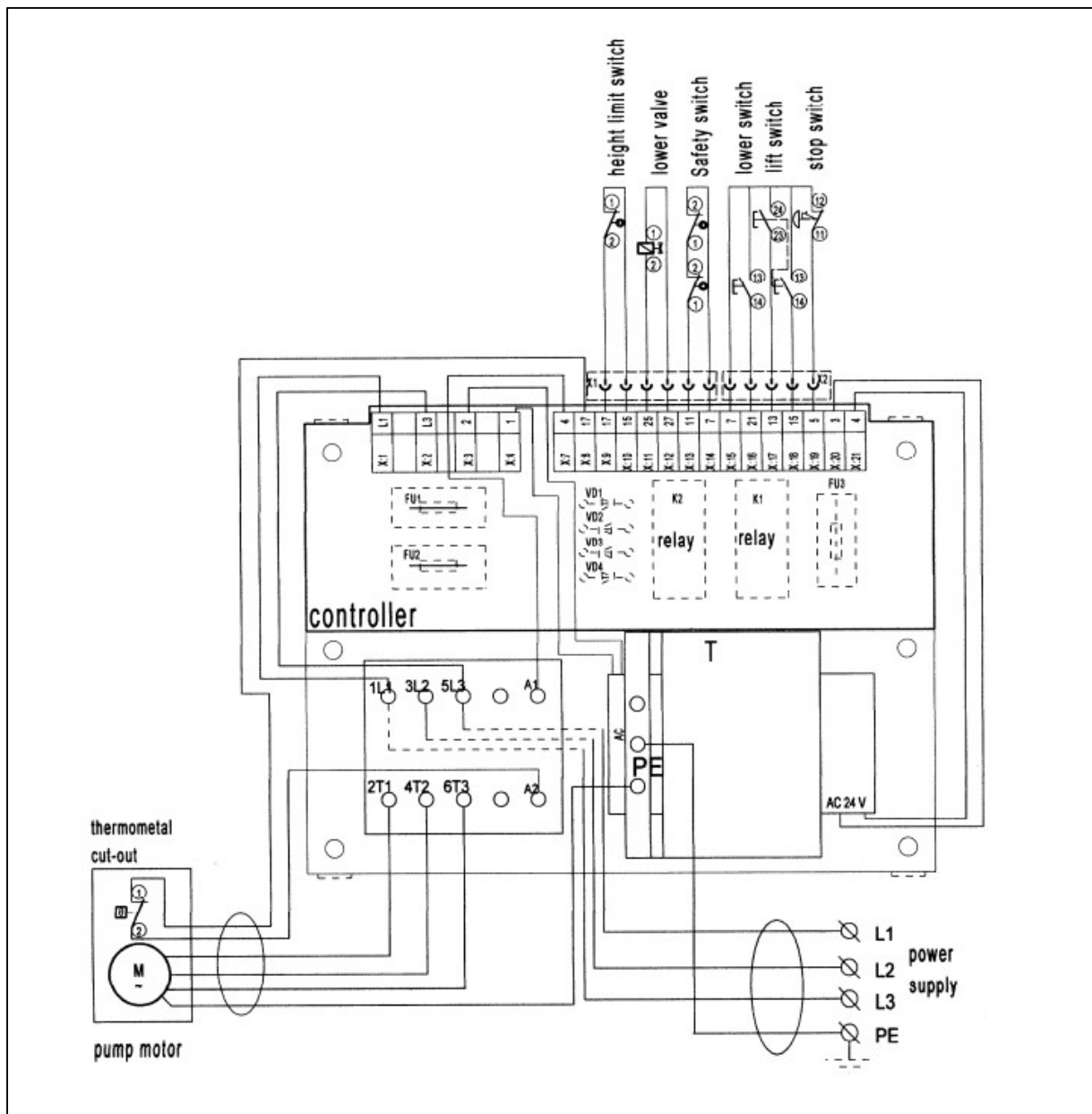
Contact the manufacturer or a service partner recommended by the manufacturer.

VII. Electrical system

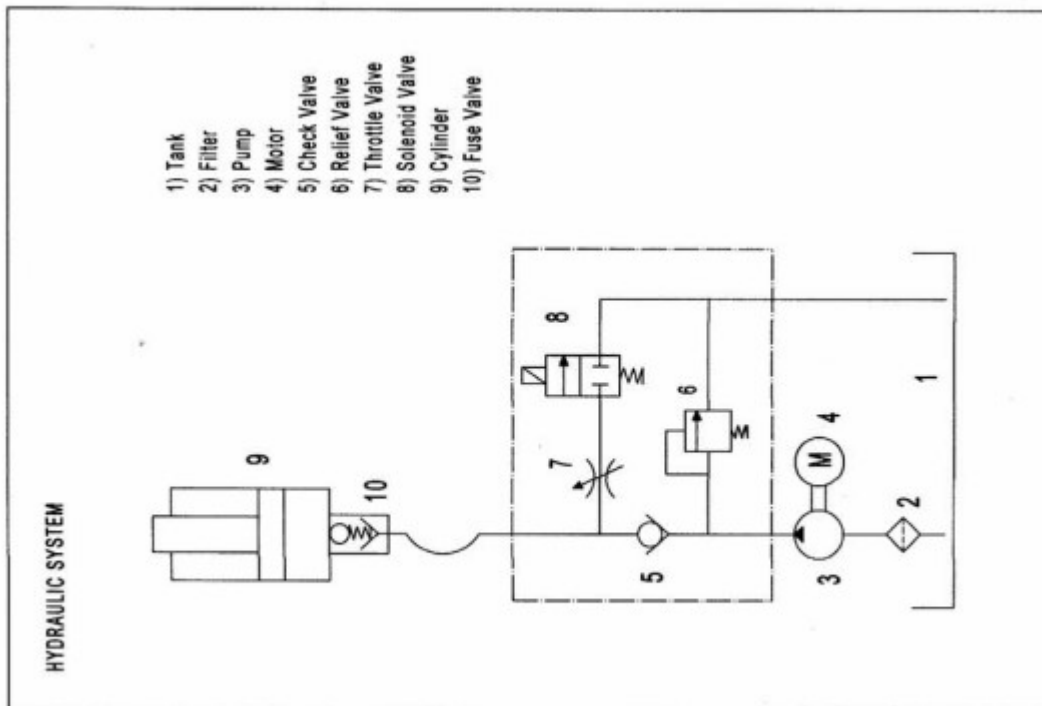
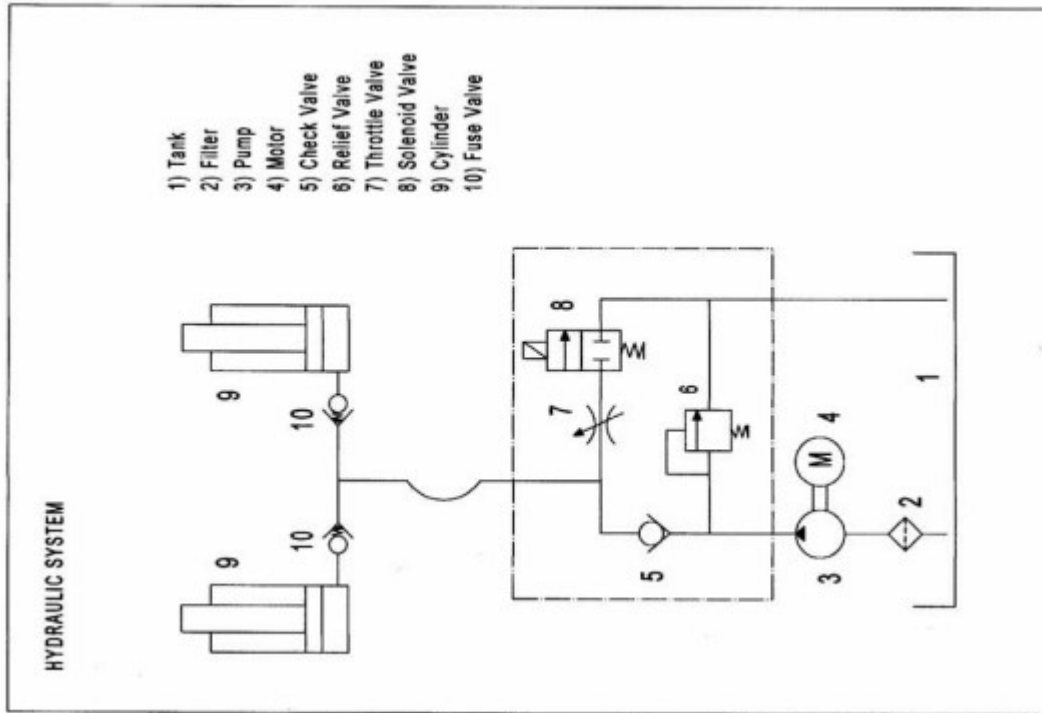
- Circuit Diagram



- Connection diagram

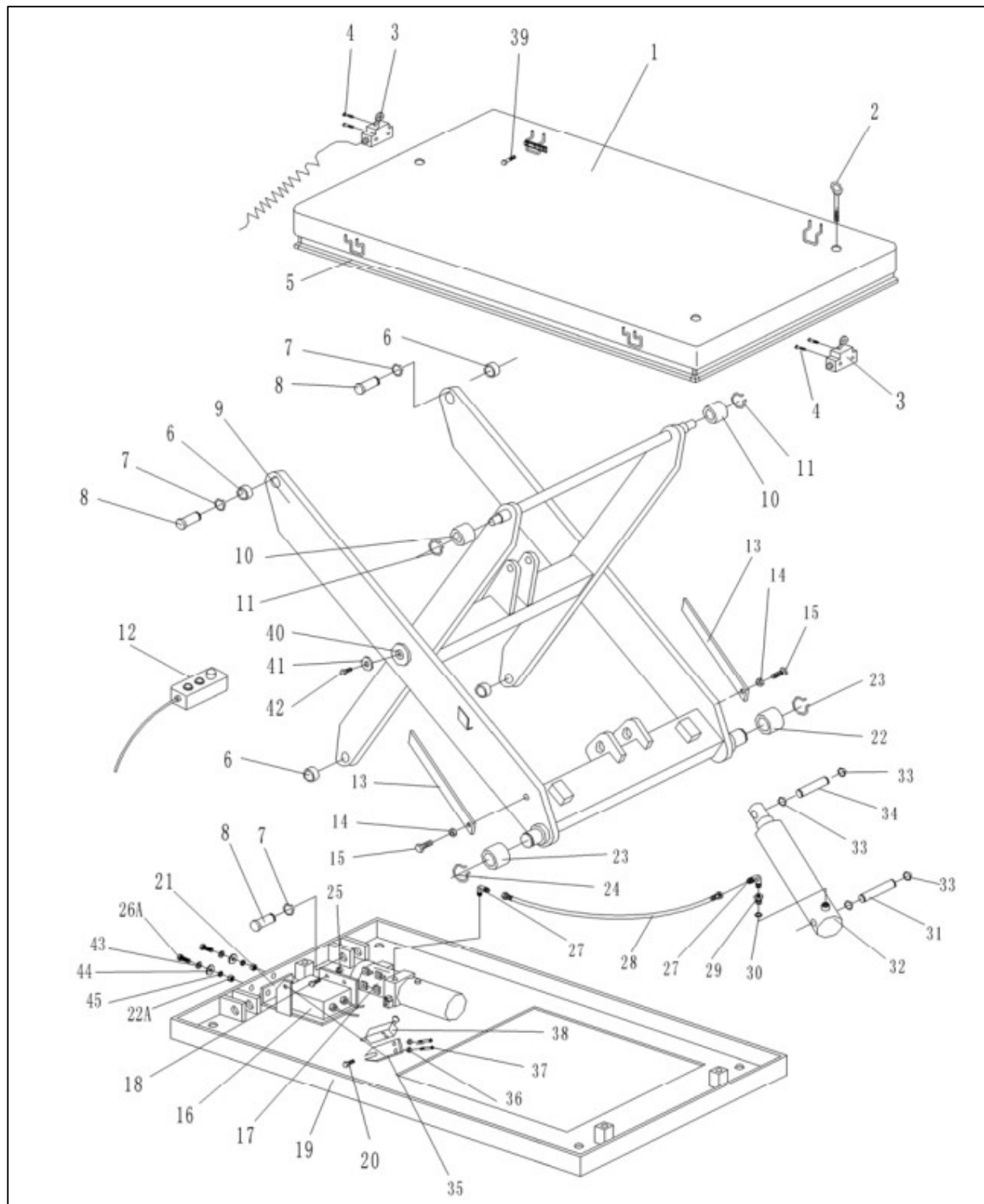


- Hydraulic system



VIII. Parts lists

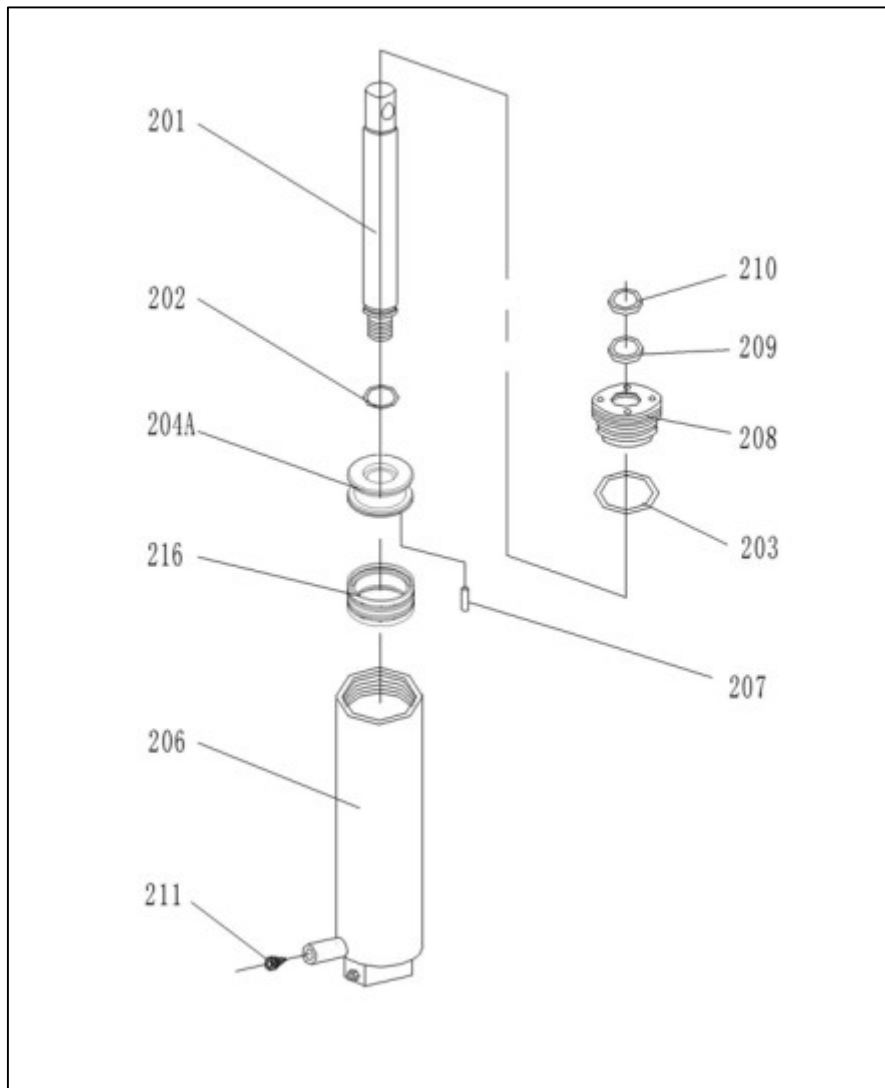
- TABLE 1000kg



- **Part list of TABLE 1000kg**

No	Description	Quantity	No	Description	Quantity.
1	Table	1	24	Retaining Ring	2
2	Bolt	3	25	Nut	4
3	Microswitch	2	26A	Screw	2
4	Bolt	4	27	90°Curve	2
5	Safety Border	1	28	Hose	1
6	Bushing	4	29	Reduction	1
7	Retaining Ring	4	30	Seal Washer	1
8	Shaft	4	31	Screw	2
9	Fork Arm	1	32	Cylinder	1
10	Roller	2	33	Retaining Ring	4
11	Retaining Ring	2	34	Shaft	1
12	Control Switch	1	35	Plank	1
13	Support Plank	2	36	Nut	2
14	Nut	2	37	Bolt	2
15	Screw	2	38	Microswitch	1
16	Chopper	1	39	Bolt	4
17	Pump	1	40	Shaft	1
18	Screw	4	41	Washer	2
19	Bottom Plank	1	42	Screw	2
20	Bolt	1	43	Washer	2
21	Connect Plank	1	44	Washer	2
22A	Nut	2	45	Elastic Washer	2
23	Roller	2			

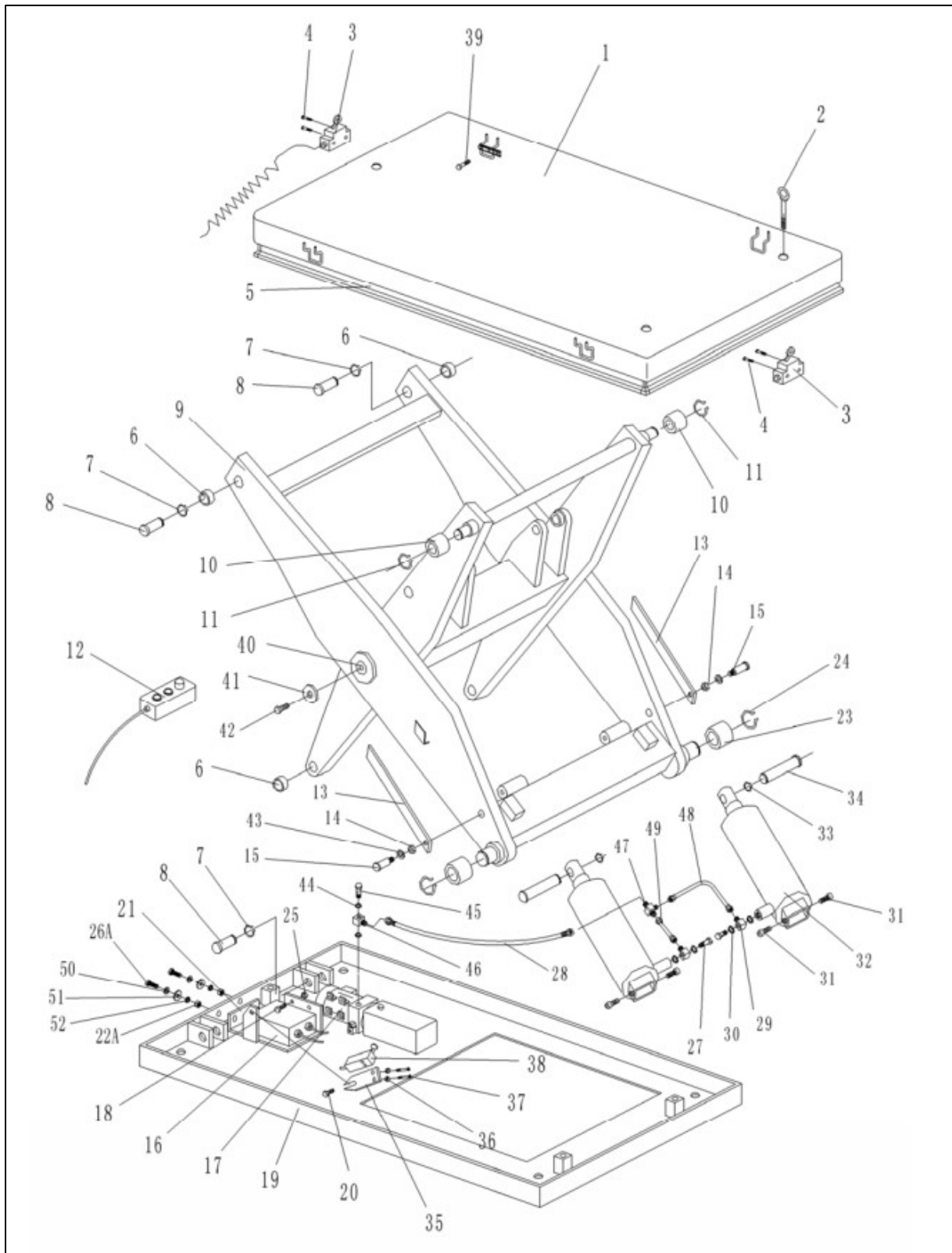
- **Cylinder of TABLE 1000kg**



- **Part list of the cylinder of TABLE 1000kg**

No	Description	Quantity	No	Description	Quantity
201	Piston Rod	1	208	Cylinder Cap	1
202	O-Ring	1	209	Y-Seal	1
203	O-Ring	1	210	Dust Ring	1
204A	Piston	1 (replaceable w. 216)	211	Safety Valve	1
206	Housing	1	216	Combined Seal Ring	1
207	Pin	1			

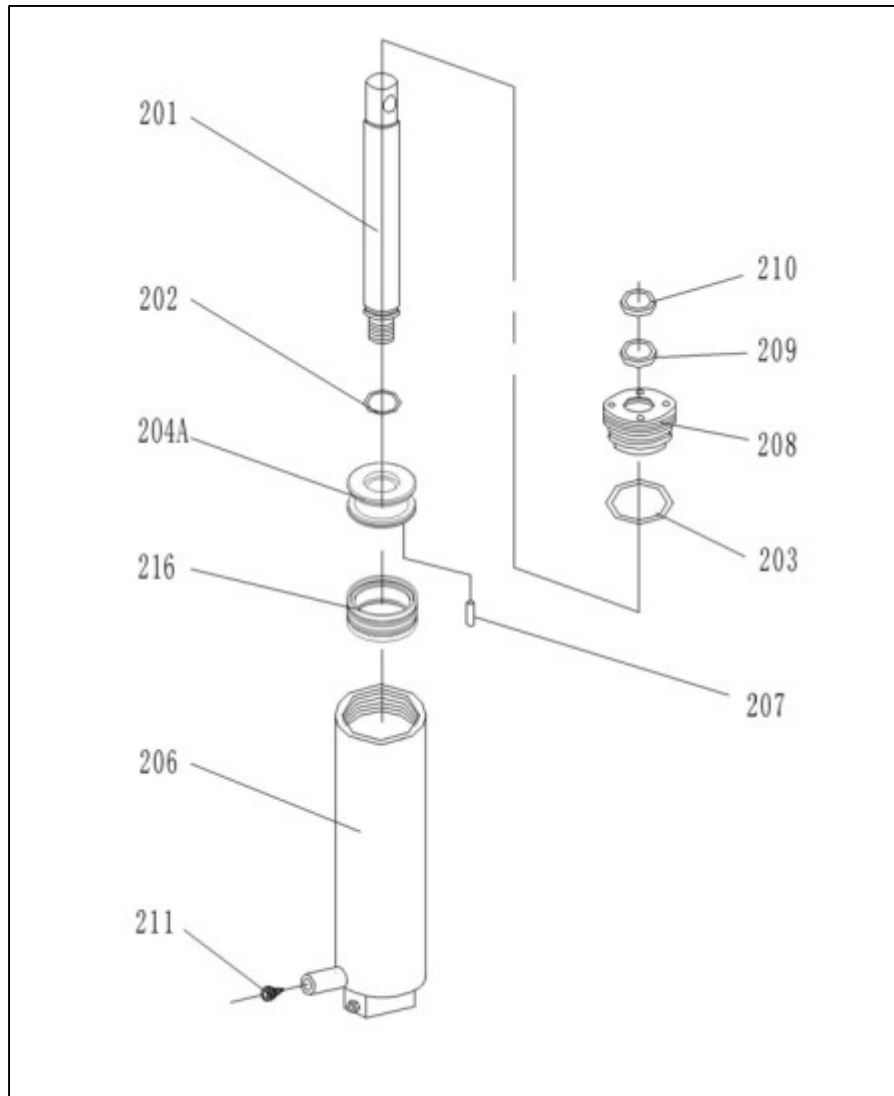
- TABLE 2000kg



- **Part list of TABLE 2000kg**

No	Description	Quantity	No	Description	Quantity
1	Table	1	27	Hollow Screw	2
2	Bolt	3	28	Hose	1
3	Microswitch	2	29	Square Joint	2
4	Bolt	4	30	Seal Washer	4
5	Safety Border	1	31	Screw	4
6	Bushing	4	32	Cylinder	2
7	Retaining Ring	4	33	Retaining Ring	2
8	Shaft	4	34	Shaft	2
9	Fork Arm	1	35	Plank	1
10	Roller	2	36	Nut	2
11	Retaining Ring	2	37	Bolt	2
12	Control Switch	1	38	Microswitch	1
13	Support Plank	2	39	Bolt	4
14	Nut	2	40	Shaft	1
15	Screw	2	41	Washer	2
16	Chopper	1	42	Screw	2
17	Pump	1	43	Washer	2
18	Screw	4	44	Seal Washer	2
19	Bottom Plank	1	45	Hollow Screw	1
20	Bolt	1	46	Square Joint	1
21	Connect Plank	1	47	Connection	1
22A	Nut	2	48	Pipe	1
23	Roller	2	49	Pipe	1
24	Retaining Ring	2	50	Washer	2
25	Nut	4	51	Washer	2
26A	Screw	2	52	Elastic Washer	2

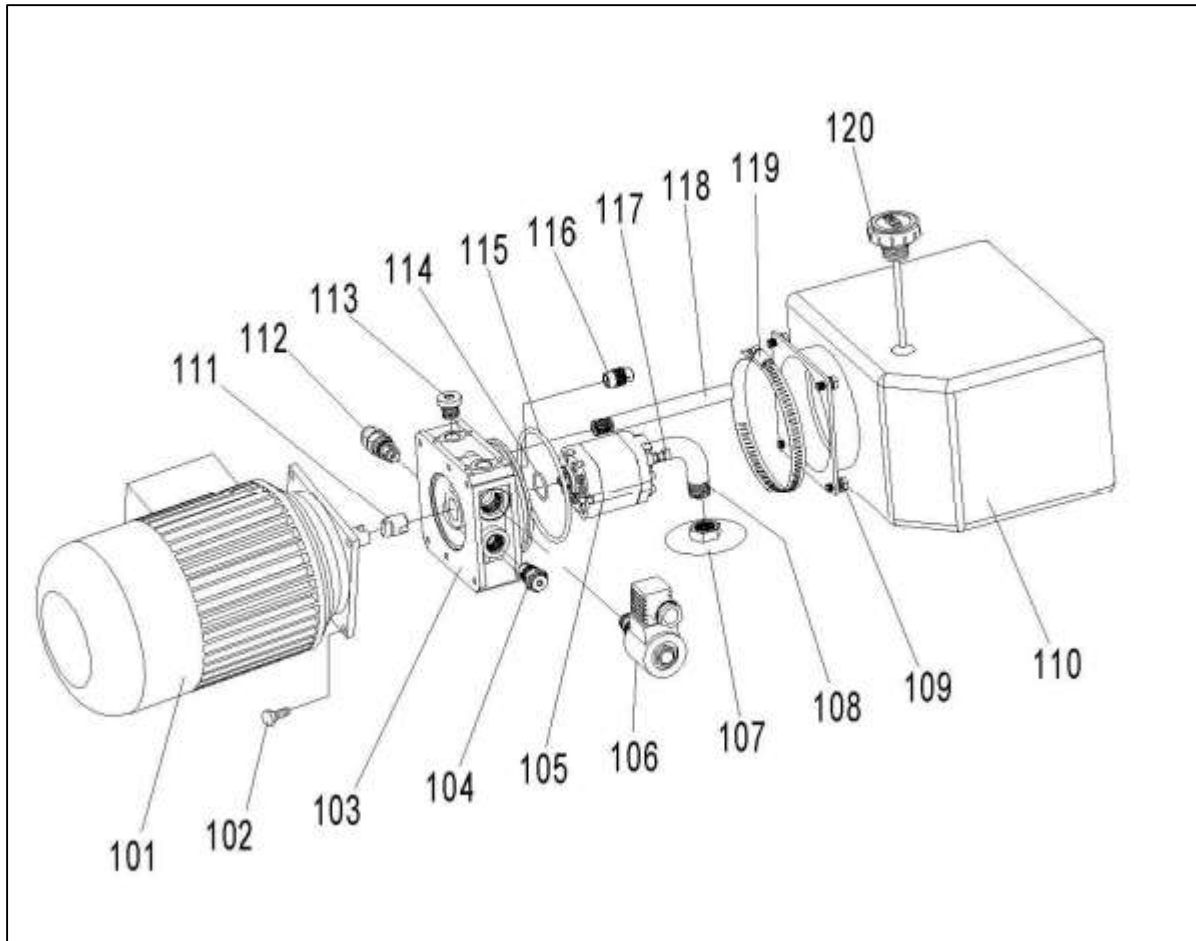
- **Cylinder of TABLE 2000kg**



- **Part list of cylinder of TABLE 2000kg**

No	Description	Quantity	No	Description	Quantity
201	Piston Rod	1	212	Cylinder Cap	1
202	O-Ring	1	213	Y-Seal	1
203	O-Ring	1	214	Dust Ring	1
204A	Piston	1 (replaceable with 216)	215	Safety Valve	1
206	Housing	1	216	Combined Seal Ring	1
207	Pin	1			

- **Pump station for TABLE 1000kg / 2000kg**



- **Part list of pump station for TABLE 1000kg / 2000kg**

No	Description	Quantity	No	Description	Quantity
101	Motor (0.75KW380V)	1	112	Relief Valve	1
102	Bolt	4	113	T Port Plug	1
103	Central Manifold	1	114	O-Ring ($\varnothing 21.2 \times 1.8$)	1
104	Check Valve	1	115	O-Ring ($\varnothing 87.5 \times 3.55$)	1
105	Gear Pump	1	116	Throttle valve 3.5l/min (1000kg)	1
106	Solenoid Valve	1		Throttle valve 4.9l/min (2000kg)	
107	Suction Filter	1			
108	Suction Angle Pipe	1	117	Screws M5x65	2
109	Screws M5x15	4	118	Return Pipe	1
110	Plastic Tank (3.5L)	1	119	Clamp	1
111	Connector	1	120	Breather Cap	1