

Operating instructions for hand-held floor cleaning machine

CLEAN-M



Please read these instructions carefully before use and keep them in a safe place.



05/2024

Foreword

All models are equipped with this manual. This manual contains important instructions for operating and maintaining the machine.

Please read this manual carefully before starting up or using this machine and familiarize yourself with it.

Each new model also comes with a complete parts manual, which should be used when replacing parts. To ensure timely delivery, please follow the instructions in the "Parts Ordering Procedure" section of the parts manual.

This machine can provide efficient service. By following these instructions, the machine can achieve the best results at the lowest cost:

- Operate the machine carefully.
- Maintain the machine regularly according to the maintenance instructions in the operating manual.
- Use parts manufactured by the original manufacturer or of equivalent quality for maintenance.

Parts and accessories can be ordered online, by

phone, fax, or email. Environmental protection

Please dispose of packaging materials, old machine components such as batteries, antifreeze, oil, and other toxic liquids in accordance with local waste disposal regulations, taking environmental safety into account.

Please ensure proper recycling.

Machine data

Please fill in for future reference.

Model number _____ Machine serial number _____ Machine
option _____ Sales representative ___ Sales
representative's phone number _____ Customer number _____ Installation
date _____

Contents

1. Safety instructions	1
2. Safety labels	3
3. Machines	5
3.1 Unpacking the machine.....	5
3.2 Installing the battery	5
4. Machine operating mode	6
4.1 Cleaning	6
5. Information about the brush and scouring pad.....	6
6. Installing the machine	7
6.1 Attaching the suction rake assembly.....	7
6.2 Installing the brush disc.....	7
6.3 Filling the solution container.....	8
7. Machine operation	9
7.1 Checking before commissioning	9
7.2 Switching on the machine	9
7.3 During machine	10
7.4 Battery indicator.....	11
7.5 Overload reset switch.....	11
7.6 Water tank	11
7.7 Empty the collection container.....	11
7.8 Empty solvent tank	12
8. Battery charging	12
8.1 Battery charger specifications.....	12
8.2 Using the battery charger.....	12
8.3 Precautions for installing and using the battery.....	13
8.4 Operating status of the LED indicator on the smart charger	14
9. Machine maintenance	15
9.1 Daily maintenance (after each use)	15
9.2 Weekly maintenance.....	17
10. Handling the machine.....	18
11. Storing the machine.....	18
12. Troubleshooting.....	19
13. Battery charger error codes	20
14. Technical parameters	21

1. Safety instructions

This device is a commercial product. It is specifically designed for cleaning hard floors indoors and must not be used for any other purpose. Please be sure to use the scouring pads, brushes, and neutral cleaning agents recommended for this device.

The following safety instructions and the heading "For safety reasons" are used throughout this manual and have the following functions as described:

Warning: Warns of serious injury or death or unsafe operating conditions.

Safety instructions: Instructions that must be observed for the safe use of the machine.

The following safety instructions indicate situations that may pose potential hazards to operators or equipment. All operators must read, understand, and follow the following safety instructions.

Warning: Fire or explosion hazard.

– Do not use flammable liquids; do not operate the machine near or in locations with flammable liquids, gases, or combustible dust.

This device is not equipped with an explosion-proof motor. During start-up and operation, the electric motor of this device generates sparks. If this device is used in locations with flammable gases, liquids, or combustible dust, it may cause a flash fire or explosion.

– Do not pick up combustible materials or reactive metals.

Warning: Risk of electric shock.

– Before repairing the machine, disconnect the battery cables and the charging plug.

– Do not use a damaged power cord to charge the battery. Do not modify the plug.

– If the charger's power cord is damaged or defective, it must be replaced by the manufacturer or its maintenance service provider or similarly qualified personnel with the appropriate qualifications in order to avoid hazards.

Warning: The rotating brush is in operation. Keep your hands away. Switch off the device before repairing it.

For safety reasons:

1. Do not operate the device in the following cases:

– In contact with flammable liquids or in the vicinity of flammable gases, as this may result in an explosion or flash fire.

– Unless you are trained and authorized.

– Unless the operating instructions have been read and understood.

– Normal operating conditions are not present.

2. Before starting the machine:

- Ensure that all safety devices are in place and functioning properly.

3. When using the machine:

- Please walk slowly on slopes or slippery surfaces.
- Wear non-slip shoes.
- Please slow down when turning.
- Report immediately if the machine is damaged or not working properly.
- Do not allow children to play on or near the machine.
- Observe the mixing ratios and handling instructions on the chemical containers.
- Do not work on slopes with a gradient of more than 5% (3°).

4. Before leaving or repairing the machine:

- Park the machine on level ground.
- Switch off the machine.
- Remove the key.

5. When repairing the machine:

- Do not move any parts. Do not wear loose tops, shirts, or sleeves.
- Disconnect the battery cables before operating the machine.
- Wear protective gloves and goggles when handling the battery or battery cables.
- Do not rinse the machine with high-pressure cleaners or water pipes. This can cause the electrical system to fail.
- Use replacement parts provided or approved by the manufacturer.
- All maintenance work must be performed by qualified maintenance personnel.
- Do not modify the original design of the machine.

6. When using trucks or trailers to transport machines:

- Empty the water tank before transport.
- Use the recommended loading/unloading ramp to load and unload machines from trucks or trailers.
- Remove the battery before handling the machine.
- Please carry the machine with the help of other people.
- Switch off the machine.
- Lower the brush disc motor to the lower position.
- Secure the machine with ropes.

2. Safety stickers

The safety stickers are affixed to the machine in the specified locations. If a sticker is missing, damaged, or difficult to see, please replace it.



The label for the rotating brush is located on the brush head.

Warning: The rotating brush is in operation.

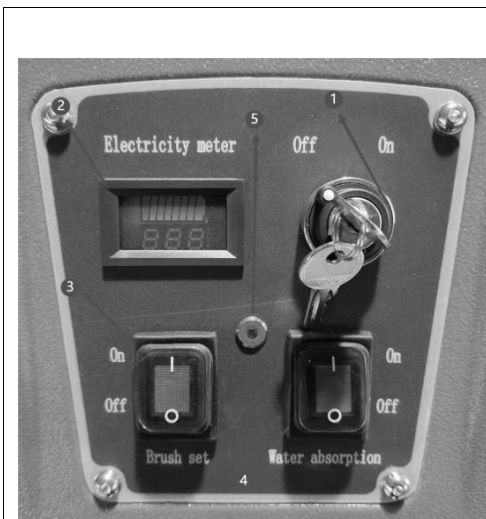
Keep your hands away. Please turn off the device before repairing it.

Warning:

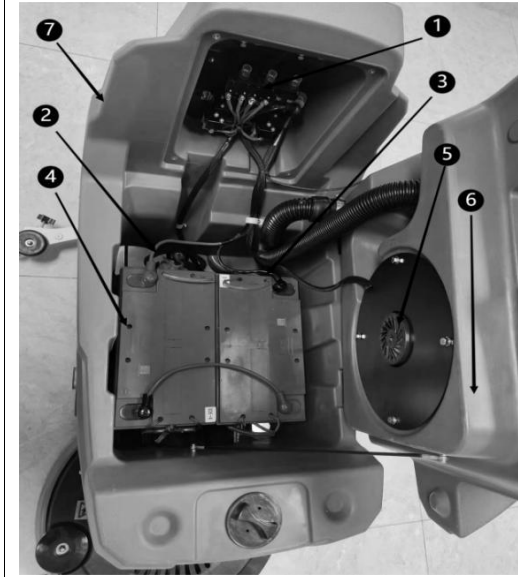
The label is located in the collection container



N0.	Name
①	Cover of the collection container
②	Main handle on the chassis
③	Fresh water inlet
④	Brush disc protection
⑤	Brush disc
⑥	Brush disc stop ring
⑦	Drive wheel
⑧	Guide wheel



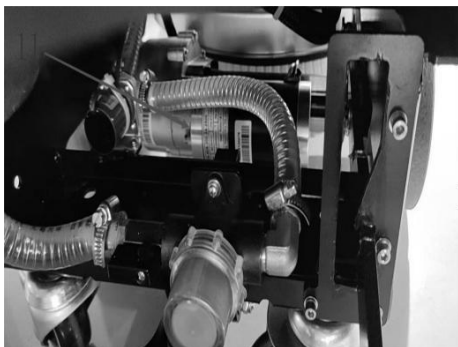
N0.	Name
①	Main switch
②	Battery indicator
③	Brush disc motor switch
④	Motor for suction rake
⑤	Error indicator light



NO.	v
①	
②	
③	
④	
⑤	
⑥	
⑦	



No.	Name	
①	Handle for scraper	
②	Charging port	
③	Clear water filter	
④	Pedal for raising the brush disc	
⑤	Suction rake assembly	
⑥	Suction pipe	
⑦	Blow-off pipe	
⑧	Transparent water level tube	
⑨	Outlet	
⑩	Self-driving	Speed Controller
④	Motor drive	



3. Machine description

3.1 Unpacking the machine

- (1) Carefully check the packaging for damage. Report any damage to the carrier immediately.
- (2) Check the list of freight contents. If any items are missing, please contact the dealer.

Cargo contents:

- 2-12 V battery – optional
 - 220 V, 15 A smart charger
 - $\phi 10$ cable, 30 cm long, for connecting the battery
 - 4 plastic sleeves for battery connection
 - One suction rake assembly
 - One brush disc and one needle holder
 - Scouring pad must be purchased separately.
- (3) Before unpacking the machine, remove the sheet metal fasteners from the large rollers. Carefully remove the machine from the shelf with the help of other people.

Note: If no loading/unloading surface is used, do not push the machine directly to avoid damage.

3.2 Installing the battery

For safety reasons: When repairing the machine, wear protective gloves and safety goggles when handling the battery and battery cables.

Recommended battery specifications:

Two maintenance-free 12 V batteries with 100 Ah

Two maintenance-free 12 V batteries with 110 Ah

Maximum battery volume: 330 mm x 171 mm x 216 mm

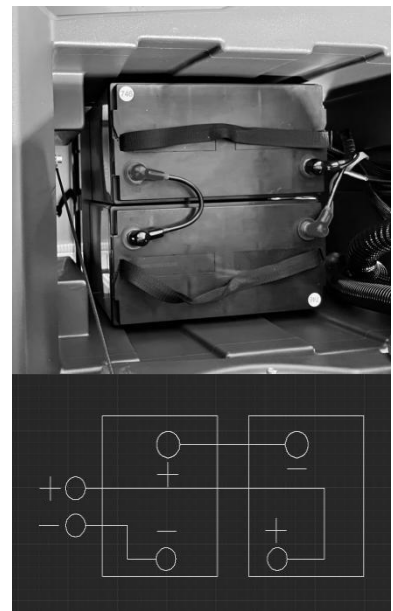
Step 1: Place the machine on level ground, turn off all power switches, and remove the key.

Step 2: Lift the drip tray so that you can access the battery compartment. (Figure 1)

Step 3: Carefully insert the battery into the battery compartment and arrange the battery terminals as shown in the following illustration (Figure 2).

Step 4: Connect the battery cables to the battery terminals as shown in the illustration (Figure 2).

Red is connected to the positive terminal (+) and black to the negative terminal (-).



4. How the machine works

4.1 Cleaning method:

Water and cleaning agent flow through water valves and solenoid valves to the brush disc and the floor. Clean the floor with cleaning agent and water by rotating the brush disc. The resulting waste water is sucked into the collection tank via the suction rake assembly and the suction motor as the machine moves forward.

5. Information about the brush and scouring pad

To achieve optimum cleaning results, please use a suitable brush.

The recommended brushes and scouring pads are as follows:

Needle holder: 530 mm 19" needle holder

Brush disc: 530 mm 19" floor brush

Polishing pad (white) – used to care for very slippery or polished floors; first wet the floor, then clean it to avoid scratches.

Upholstery pad (red) – for removing light dirt without damaging the floor.

Scouring pad (blue) – for removing medium to heavy dirt. Remove dirt, stains, and sanding marks to prepare the floor surface for recoating.

Folding pad (brown) – for removing the coating from the floor surface for recoating.

Gravity folding pad (black) – for removing heavy coatings or substrates or for scrubbing with strong force.

6. Machine installation

6.1 Connecting the suction rake assembly

Step 1: Place the machine on level ground, turn off all power switches, and remove the key.

Step 2: Pull the suction rake's lifting bar to the upper position.



Step 3: Attach the suction rake to the suction rake bracket as shown in the illustration. Ensure that the fastening knob is fully inserted into the slot, then tighten the knob.



Step 4: Connect the suction pipe to the suction rake assembly as shown in the illustration.



Step 5: Check the suction rake strip and make adjustments if necessary (see "Adjusting the suction rake strip").

6.2 Installing the brush disc

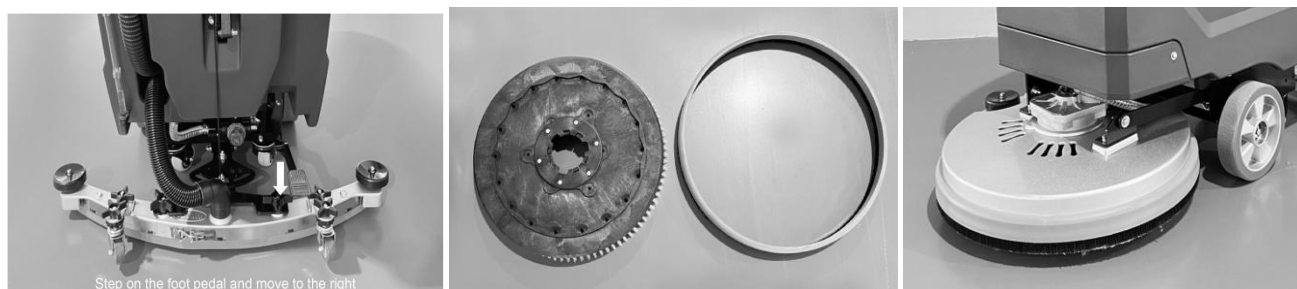
Safety note: Before installing the brush disc or needle holder, place the machine on a horizontal surface, turn off

all power switches off, and remove the key.

Step 1: Place the machine on a level surface, turn off all power sources, and remove the key.

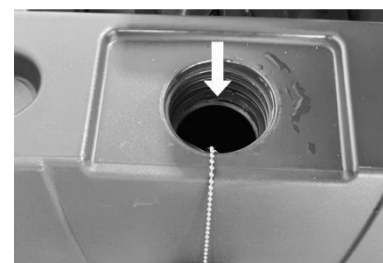
Step 2: Press down on the brush disc lift pedal and move it to the right (as indicated by the arrow) to raise the brush disc motor.

Step 3: Insert the needle holder/brush wheel into the center of the brush wheel cover.



6.3 Filling the solution tank

There is a water filling opening at the front of the machine through which the solution can be poured into the solution tank.



For floor cleaning: Use hot water (up to 60°C). According to the mixture
Follow the instructions on the container and add the recommended amount of detergent to the solution tank to mix it.

Note: If you use a bucket to fill the solution tank, make sure that the bucket is clean. Do not use the same bucket to fill the solution tank and empty waste water.

Note: Always use the recommended commercial cleaning agent for cleaning. If the machine is damaged due to improper use of cleaning agents (do not use granular cleaning agents such as washing powder), the manufacturer will not honor the warranty.

Warning: Be aware of the risk of fire or explosion. Do not use flammable liquids.

For safety reasons: When using the machine, please observe the mixing ratio and handling instructions on the chemical container.

7. Operation of the machine

Safety note: Only operate the machine after you have read and understood the operating instructions.

Warning: Fire or explosion hazard. Never operate the machine near or in locations with flammable liquids, gases, or combustible dust.

7.1 Checks before commissioning

- Remove dust from the floor.
- Check the battery indicator scale (see "Battery indicator").
- Check the scouring pad/brush for wear.
- Check the suction comb strip for wear and adjust the angle accordingly.
- Ensure that the collection container is empty and that the waste water filter screen is installed and clean.

7.2 Turn on the device.

Step 1: Turn on the power supply.

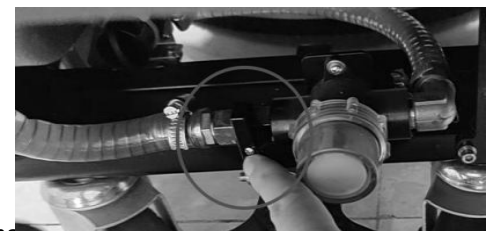
Turn on the main switch and press the button for the brush disc motor and the button for the suction rake motor.



Step 2: Press the brush disc motor pedal and move it to the left (as indicated by the arrow) to attach the brush disc. Lower the suction rake lifting handle to lower the suction rake assembly to the floor. The suction motor is operating.



Step 3: For different floor cleaning requirements, the water output can be controlled by moving the water valve switch up and down.



Step 4: To finish cleaning, turn off the brush disc, suction rake motor, and main power supply to raise the brush disc and suction rake.

7.3 During machine operation

Warning: Do not pick up flammable materials or reactive metals to prevent fires or explosions.

For safety reasons: Walk slowly and wear non-slip shoes when moving on sloped or slippery surfaces.

1. The cleaning strips must overlap by 5 cm.
2. Keep the device moving to avoid damaging the floor.
3. Clean the cleaning area in advance to avoid scuff marks. If scratches are visible on the floor after using the moving suction rake, wipe the strip with a cloth and remove the dirt.
4. Do not operate the device on slopes with a gradient of more than 5% (3°).
5. If there is too much foam, please add the recommended commercially available defoamer to the recovery tank.
6. Note: No foam must enter the waste water filter screen in the recovery tank to prevent damage to the

suction motor.

7. Double cleaning is recommended for extremely dirty areas. First, lift the suction rake for cleaning; after soaking it in the solution for 3-5 minutes, lower the suction rake and clean it again.

8. When personnel leave the machine, please lift the suction rake and brush disc, turn off all power switches, and remove the key.

7.4 Battery indicator

The battery indicator shows the battery's charge status. When the battery is fully charged, all indicator lights are on. As energy consumption increases, the indicator lights go out from right to left.

Note: To extend the life of the battery, please recharge it in a timely manner after using the device.

When the power level reaches the last 4 levels, please stop cleaning. This will prevent the battery from being completely discharged. Please immediately move the device to the charging area to charge the battery: .



7.5 Overload reset switch

The control panel of this device is equipped with a resettable overload reset switch to prevent damage to the electric door lock. Overload reset switch (see Fig. 14).

The control panel of this machine is equipped with two reset switches. The upper one is for the suction motor and the lower one is for the brush disc motor.

If the overload reset switch is triggered, please determine the cause of the trigger, allow the motor to cool down, and then manually press the overload reset switch.

If a machine needs to be repaired, please contact the authorized service center.



7.6 Emptying the water tank

The collection container must be emptied and cleaned after each use.

For safety reasons: Before leaving or repairing the machine, place it on level ground, switch it off, and remove the key.

7.7 Empty the collection tank

Step 1: Move the machine to the emptying location and turn off the power switch. Step 2: Hold the drain pipe with the opening facing upwards, remove the pipe cap, and lower the pipe to empty it.

Note: Do not use the same bucket to pour the solution into the solution tank.



if this bucket is used to collect the wastewater drained from the recovery tank.

7.8 Empty the solvent tank

To drain the remaining water from the solvent tank, open the drain pipe cap of the solvent tank (Fig. 16).



8. Charging the battery

The following charging instructions apply to the charger supplied with this device.

Note: To extend the life of the battery, please charge it promptly after using the device to prevent damage to the battery due to prolonged power failure.

8.1 Battery charger specifications

- Charger type: Fully automatic intelligent charger
- Maintenance-free battery
- Output voltage: -24 V
- Output current: 15 A

8.2 Using the battery charger

The operating instructions for the battery charger can be found in the operating manual supplied.

1. Set up the machine in a well-ventilated area.

Warning: Beware of fire and explosion hazards. Keep away from sparks or open flames for safe use.

2. Place the machine on a level and dry floor, lift the suction rake and brush disc, switch off all power switches, and remove the key.

3. Plug the power cord of the electrical appliance into a properly grounded outlet.

4. Plug the DC connector of the charger into the battery charging socket



port on the back of the device (Fig. 17).

Note: Once the charger is connected, the device will no longer function.

Note: Please do not disconnect the charger's DC cable from the socket on the device during charging. This will prevent arcing. If charging must be interrupted, disconnect the power cord first.

8.3 Precautions for installing and using the battery

- (1) Before using the battery, check that each battery is undamaged, clean, and clearly marked, and clean the battery surface with a dry cloth. Check the open-circuit voltage of the battery, whether the positive and negative terminals are clearly marked, and whether there is any reverse polarity.
- (2) The battery must be installed upright in accordance with the requirements of the drawings and must not be turned upside down. The distance between adjacent batteries must be at least 5 mm. After completing the installation, check that the positive and negative terminals of each battery comply with the requirements of the installation drawings, and then connect each battery as a whole group with wires.
- (3) After the battery is fully installed, check whether the connecting parts are loose. When tightening the connecting parts, be careful not to use too much force, as this may damage the terminal. Generally, the tightening force should not exceed 15 N · m.
- (4) When installing the batteries as a whole, adjust the pads between the batteries so that the batteries stand upright, and tighten the batteries to prevent them from wobbling and bumping into each other.
- (5) Electric door locks, safety seats, and other devices that can easily generate sparks must be isolated from the battery.
- (6) The batteries leave the factory in a charged state. As a rule, the user can insert the battery directly for use. If the battery is not used for a long period of time (more than 2 months), for example, it must be charged according to the charging method before use.
- (7) The battery must not be stored near sources of fire or heat. Direct sunlight must be strictly avoided during hot summer months. Avoid strong vibrations, impacts, and short circuits between the positive and negative terminals of the battery.
- (8) Battery capacity depends on an ambient temperature of 25 °C. For every 1 °C drop in temperature, battery capacity decreases by approximately 1%. The influence of temperature must be taken into account during use, and use in environments below -10 °C should be avoided as far as possible.

- (9) Batteries must not be disassembled without authorization in order to avoid hazards.
- (10) Used batteries must be recycled and must not be disposed of arbitrarily, as this can harm the environment.
- (11) During charging, monitor the battery temperature to prevent overheating.
- (12) Using the device with a battery that has not supplied power for a long period of time is strictly prohibited. The battery must be fully charged before use.
- (13) Always remember not to charge the device too frequently or operate it in conditions with frequent power outages, as this may damage the battery. The manufacturer is not liable for any damage to the battery caused by this.

8.4 Operating status of the LED indicator on the smart charger

LED light	Finger status	Operating status
LED1, LED2	Flashing, fan not rotating	Pre-charging status [Charging time: 3 hours]
LED1、 LED2	Red light on, fan rotating	Constant current status [Charging time: 7–8 hours]
LED1、 LED2	Red light on, fan running	Constant voltage status [Charging time: 4.5 hours]
LED1、 LED2	LED1 red light on, LED2 green light on, fan not running	Low constant current status [Charging time: 4.5 hours]
LED1、 LED2	LED1 off, LED2 green, fan not running	Charging complete
Notes		
Several cases in which LED2 lights up red	Short circuit in the load	
	Cable connected upside down	
	Short circuit in the battery cable	
	Overheating – LED2 lights up orange	

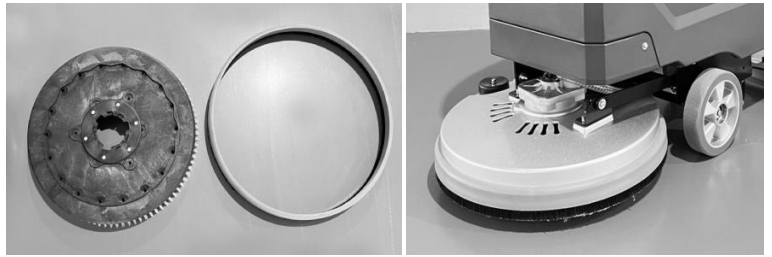
9. Machine maintenance

To keep the machine in optimal operating condition, daily, weekly, and monthly maintenance tasks must be performed.

Warning: Beware of the risk of electric shock. Please disconnect the battery cables before performing maintenance on the machine.

9.1 Daily maintenance (after each use)

Step 1: Empty and clean the collection tank.



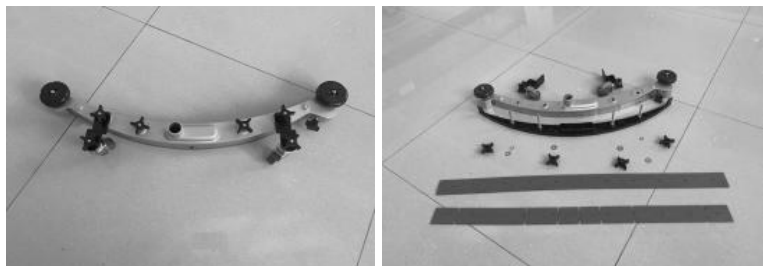
Step 2: Empty the solvent tank, remove the clean water filter, clean it, and reinsert it.



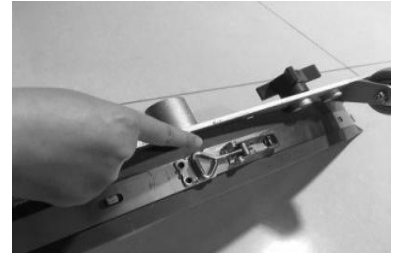
Step 3: Make sure to press the brush disc motor button when lifting the brush disc motor. Once the brush disc motor is rotating, close the brush disc motor button. Then remove the scouring pad and brush and clean them. If worn, please use the scouring pad or replace it.



Step 4: Clean the suction rake strip. Move the suction rake assembly to the raised position to avoid damaging the strip.



Step 5: Check the wear condition of the edges of the suction comb strip (Fig. 23). If worn, please replace both ends of the strip. (See "Replacing the suction comb strip")



Step 7: Wipe the machine with a multi-purpose cleaner and a damp cloth (Fig. 24). Safety note: Do not clean the machine with a high-pressure cleaner or water jet, as this may cause the electrical system to fail.

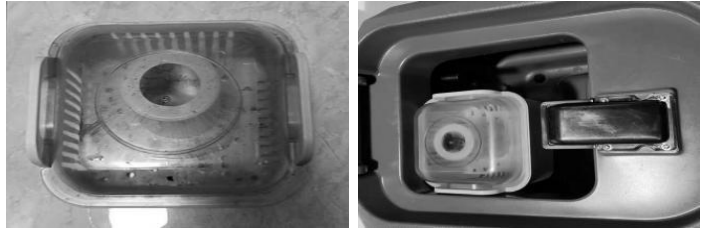


Step 8: To extend the battery life, charge the battery in a timely manner after using the machine to prevent the battery from being damaged by power loss (Fig. 25).



9.2 Weekly maintenance

Step 1: Remove the solvent tank from under the machine and clean the filter screen. Be sure to empty the solvent tank before removing the filter screen.



Step 2: Clean the top of the battery to prevent corrosion of the electrodes and check whether the cable connections are loose.



Step 3: Check the seal on the recovery tank lid for foreign objects or damage. If damaged, please replace it.



10. Handling the machine

If you are transporting the machine with a truck or trailer, please observe the following lashing procedures:

- (1) Raise the suction rake and brush head.
- (2) Use the recommended loading/unloading area to load the machine.
- (3) Position the front of the machine close to the front of the truck or trailer. Once the machine is stable, lower the brush head and suction rake.
- (4) Place an obstacle behind each drive wheel to prevent the machine from slipping.
- (5) Secure the top of the machine with ropes to prevent it from tipping over. Brackets must be attached to the loading area of the truck or trailer.

For safety reasons: Please use a recommended loading area when loading and unloading the machine with a truck or trailer. Always secure the machine with ropes on the truck or trailer.

11. Storage of the machine

- (1) Charge the battery before storing the machine. Do not store the machine with a nearly empty battery. For longer storage periods, you should charge the battery every 2–3 months to prevent long-term performance loss and damage.
- (2) Drain the water from the water tank and rinse it thoroughly.
- (3) Store the machine in a dry place and keep the suction rake and brush disc in a raised position.
- (4) Open the waste water cover to facilitate ventilation.

Note: Never expose the machine to rain. Store it indoors.

- (5) If the machine is stored at temperatures below freezing, follow the instructions below for frost protection.

Frost protection

Pour 4 liters (1 gallon) of undiluted recreational vehicle (RV) antifreeze into the solvent tank.

For safety reasons: Avoid contact of the antifreeze with your eyes. Wear safety goggles.

Important: Flush the antifreeze from the solvent tank before starting up the machine.

12. Troubleshooting

Problem	Cause	Solution
The machine does not work.	The switch is not turned on or is damaged.	Turn on the switch with the key or replace the switch.
	The suction disc motor is not switched on or is damaged.	Turn on the switch or replace it.
	The suction motor button is not switched on or is damaged.	Turn on the switch or replace it.
	The battery is empty or damaged.	Please charge or replace the battery.
	The overload reset switch trips.	Eliminate the short-circuit fault and press the overload reset switch down.
The charger is not working.	The plug is not connected to the power supply.	Check the plug connection.
	The positive and negative connection cables are connected incorrectly.	Connect the positive and negative terminals correctly.
	The charger is not working.	See the charger error code.
The brush disc motor is not working.	The brush disc is lifted off the floor or the brush disc motor button is damaged.	Replace the microswitch of the brush disc motor.
	The motor switch is damaged.	Replace the motor microswitch.
	The overload reset switch is tripping.	Fix the fault and press the overload reset switch.
	Wear on the motor carbon brush	Please contact customer service.
	The connection of the motor brush plate is loose.	Reattach the connection.
	The brush disc motor is damaged.	Replace the motor.
The machine cannot move forward.	The steering wheel is damaged.	Replace the steering wheel.
	The large steering roller is damaged.	Replace the large steering roller.
	The adjustment nut on the brush disc is loose.	Readjust the adjustment nut on the brush disc.
	The suction motor is damaged.	Replace the suction motor.
	The collection container is full.	Empty the waste water.
The suction power is insufficient.	The collection container is full or the suction pipe is damaged.	Empty the collection container or replace the suction pipe.
	The drain pipe cover is not sealed.	Replace the drain pipe cover.

Problem	Cause	Solution
The suction power is insufficient.	The waste water filter screen in the collection container is clogged.	Clean the waste water filter screen.
	Foreign objects on the seal of the waste water pipe cover.	Remove the foreign objects and replace the waste water pipe cover.
	Wear on the suction rake strip	Replace or renew the suction rake strip.
	The suction rake strip cannot be bent properly.	Adjust the height of the suction rake strip.
	The suction motor is damaged.	Replace the suction motor.
	Foreign objects on the waste water pipe cover	Remove the foreign objects from the waste water pipe cover.
	The battery level is low.	Charge the battery.
The runtime is reduced.	The battery level is low.	Please fully charge the battery.
	The battery is defective.	Replace the battery.
	The battery needs maintenance.	See "Battery maintenance."
	The battery charger is not working.	Maintenance or replacement of the battery charger
Little or no water is flowing out.	Filter screen of the solvent tank	Clean the filter screen of the solvent tank.
	The water valve switch is defective.	Replace the water valve switch.
	The solenoid valve is defective.	Replace the solenoid valve.

13. Battery charger error codes

Code	Error	Solution
LED2 lights up green and flashes	The battery voltage is below 22 V.	Charge the battery for half an hour with 24 V, 15–25 Ah, and then use the smart charger for daily charging.
	The battery level is reversed and cannot reach 22.4 V.	
LED2 lights up red.	The battery voltage is lower than 22 V.	The battery connector is not properly connected. The battery circuit is interrupted.
Notes	1. The charger for batteries with liquid refill cannot charge maintenance-free batteries, as this can easily cause the charger to burn out.	
	2. Maintenance-free chargers can charge wet-cell batteries, but the batteries cannot be fully charged.	
	3. If the voltage is below 22 V, the smart charger cannot function.	
	4. If the battery voltage is below 23 V, the battery will issue a warning to charge. Please charge it in a timely manner.	
	5. The above errors all occur with new batteries. Old batteries must be serviced and replaced.	
	6. Under normal circumstances, the power indicator on the device's control panel will emit a warning when the battery level is low. Please charge the battery in a timely manner. If it is not charged for a long period of time, the above errors will occur.	

14. Technical parameters

Item	Dimensions/Capacity	
Cleaning width (brush size in inches)	540 mm/19"	
Squeegee width	830	
Capacity of solvent tank	55	
Recovery tank capacity	60	
Battery	24 V/100 Ah	
Drive motor	300 W	
Vacuum motor	500 W	
Brush motor	550	
Continuous operating time	2 to 4 hours	
Weight (including battery)	148 kg	
Max. cleaning capacity per hour	2600 m ² /h	
Product dimensions	1200 × 780 × 960 mm	