

# SK® U660E

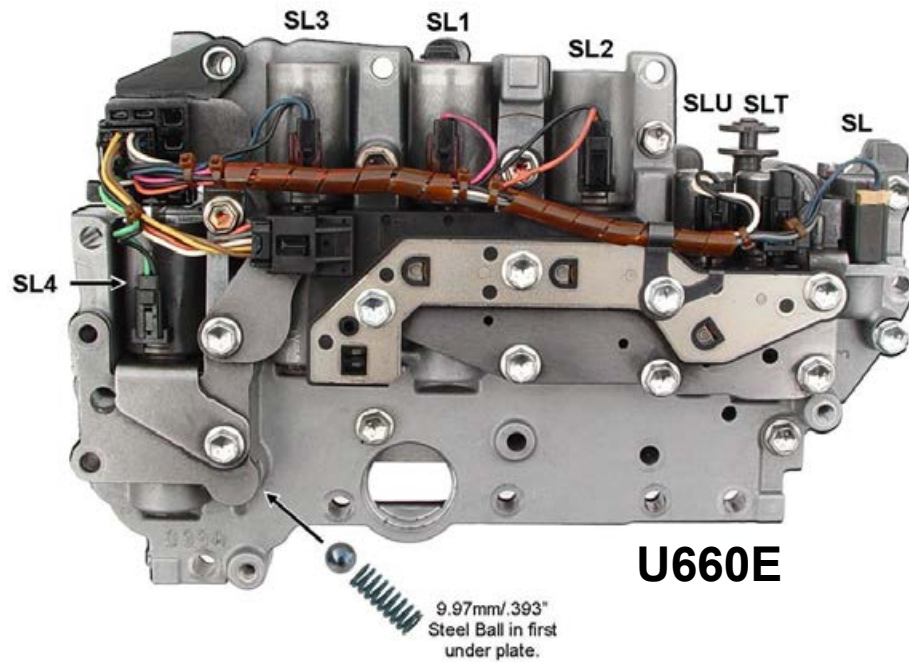


## Corrects/Prevents/Reduces

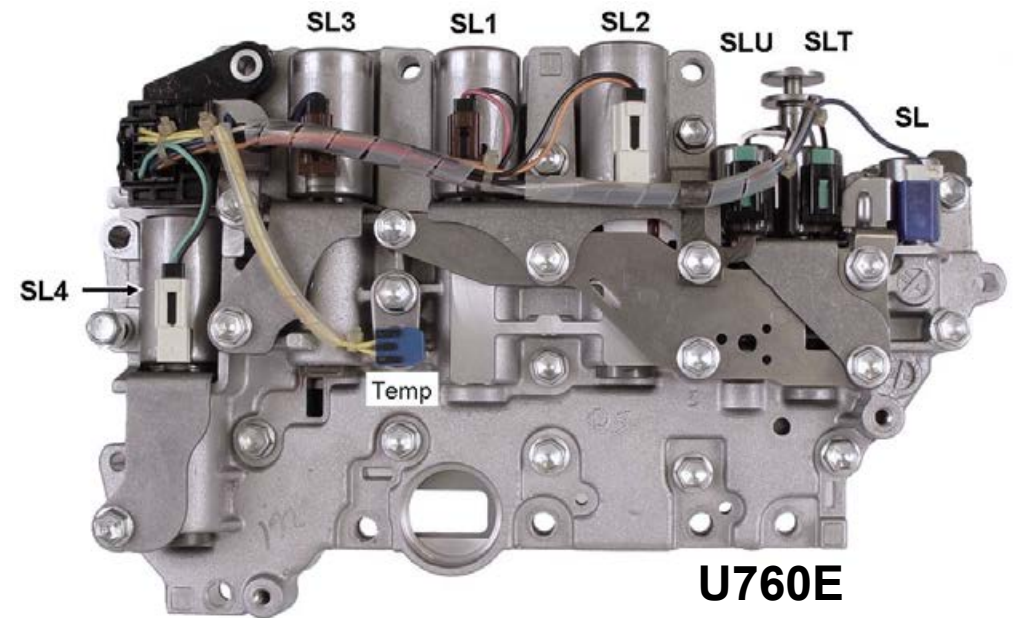
Shuttle Shift, Flare on 2-3 Shift, Slips with throttle in 3rd and/or 4th, TCC Slip codes.

For Professional Use Only!

**This Product Does Not Fit U760E Models!  
Order SK®U760E**



**U660E**



**U760E**

### Tech Note:

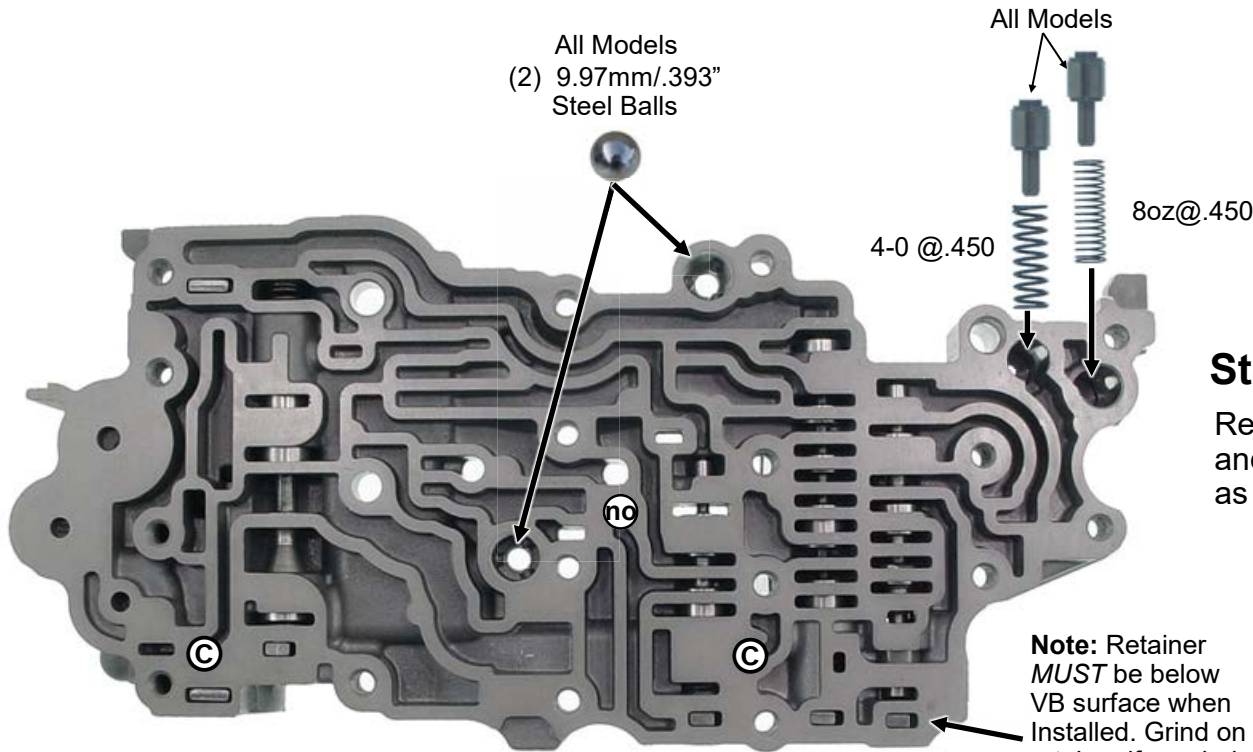
Always mark the current locations of check balls, retainers etc. to insure they are returned to their original locations even if they differ from what is shown. This is a typical layout of these valve body's. Use care in disassembling.

**Planetary failure always REQUIRES a complete strip and cleaning of the valve-body!**



# Accumulator Body Repairs

Pay Attention to Small Part Locations!



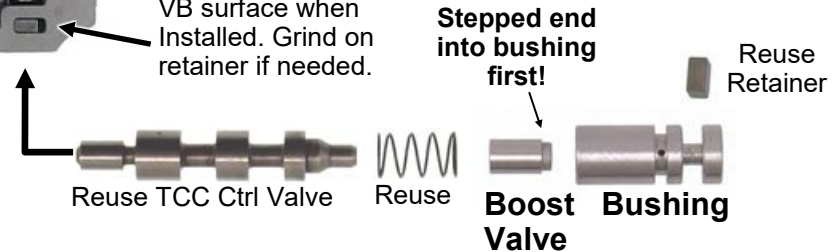
## Step 1

Remove and discard original TCC Boost Valve and Bushing. Clean out VB bore. Reassemble as shown with **New Boost Valve and Bushing**.

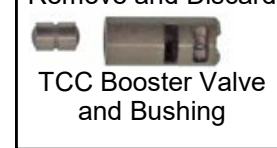
(2) 5.50mm/.217" Plastic Balls

©

**Note:** Retainer *MUST* be below VB surface when Installed. Grind on retainer if needed.



Remove and Discard



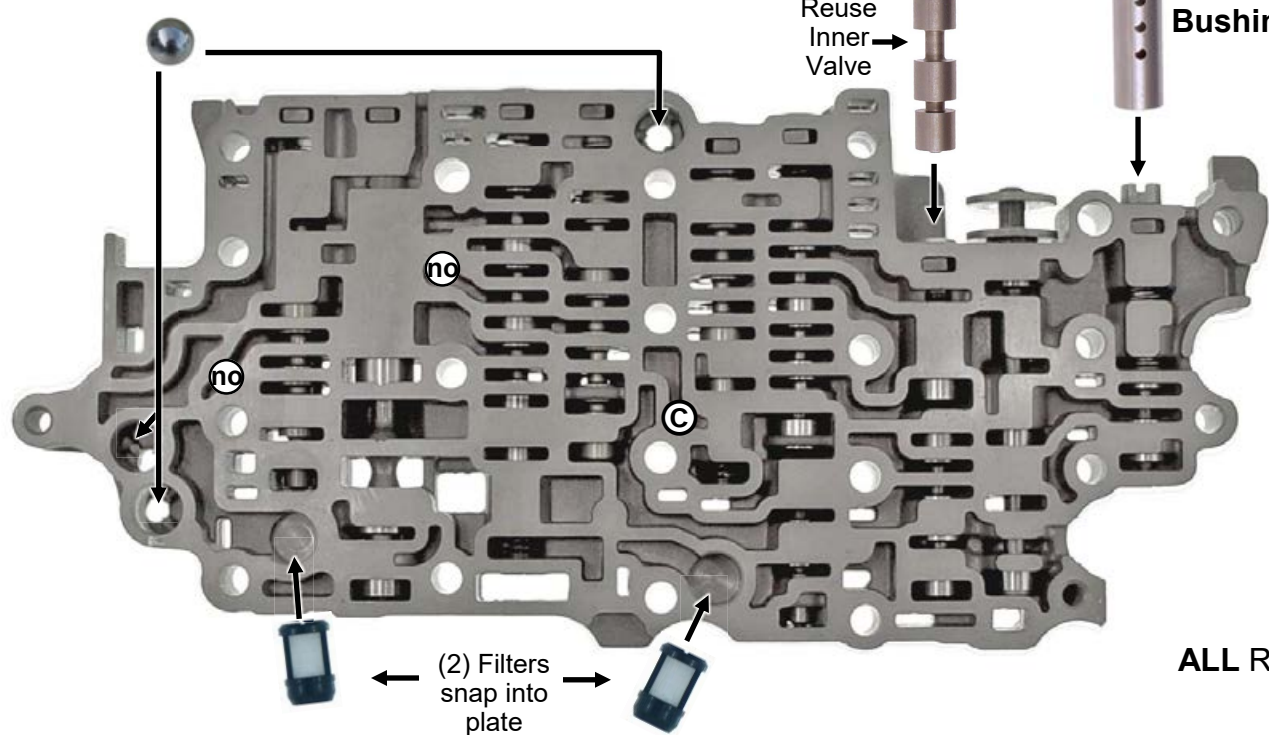
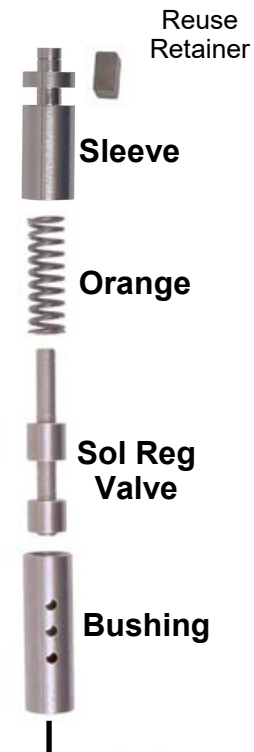
**ALL Retainers MUST NOT** extend up above VB surface when installed!

# Mid-Body Repairs

## Step 1

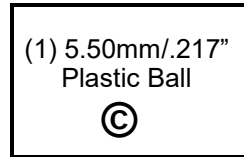
Remove and discard original B2 Regulator Outer Valve and Spring.  
Install **NEW B2 Reg** outer Valve and **White** Spring. Reuse original End Plug and Retainer.

(3) 9.97mm/.393"  
Steel Balls



## Step 2

Remove and discard original Sol Regulator Valve, Spring and Stepped End Plug.  
Install **NEW** Bushing, Valve, **Orange** Spring and Outer Sleeve. Reuse original Retainer.



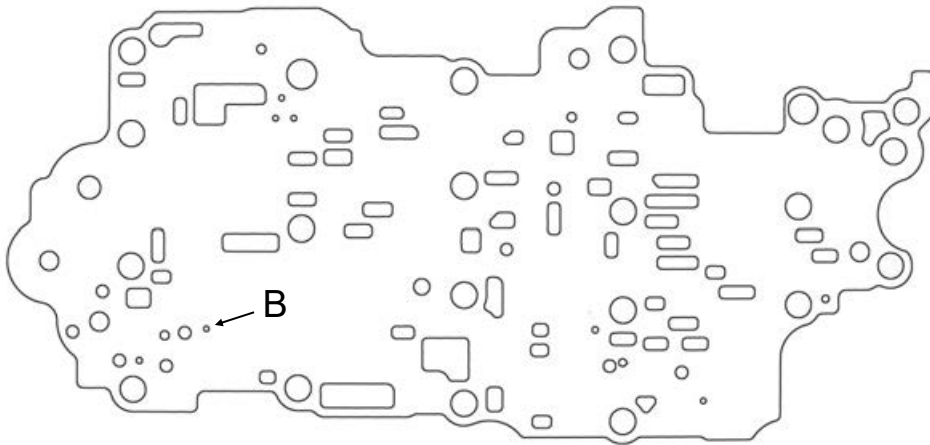
**ALL** Retainers **MUST NOT** extend up above VB surface when installed!

## Plate Updates

**Help This Trans Stay Cool!  
Do these steps!**

### Step 2

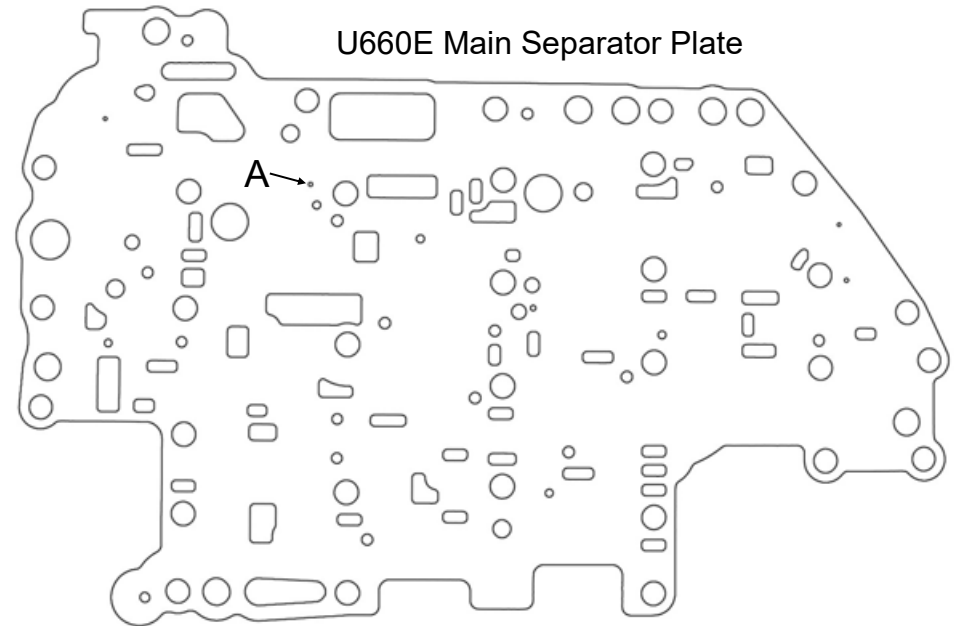
Enlarge Lower Body bottom separator plate hole "B" with .055 drill provided.



U660E Accumulator Body Separator Plate

### Step 1

Enlarge main separator plate hole "A" with .055 drill provided.



U660E Main Separator Plate

This page ends the U660E repair work.  
Always reassemble any loose small parts  
the way you found them.