

When It Rains, It Drains



An Overview of (MCC) Meadows at Chandler Creek MUD Storm Water Management Program

What will we learn in this Presentation?

- What is storm water and why can it be a problem in our community?
- What is our community doing to manage storm water and what are the benefits?

household wastewater
(toilet, sinks, etc.)



catch basin



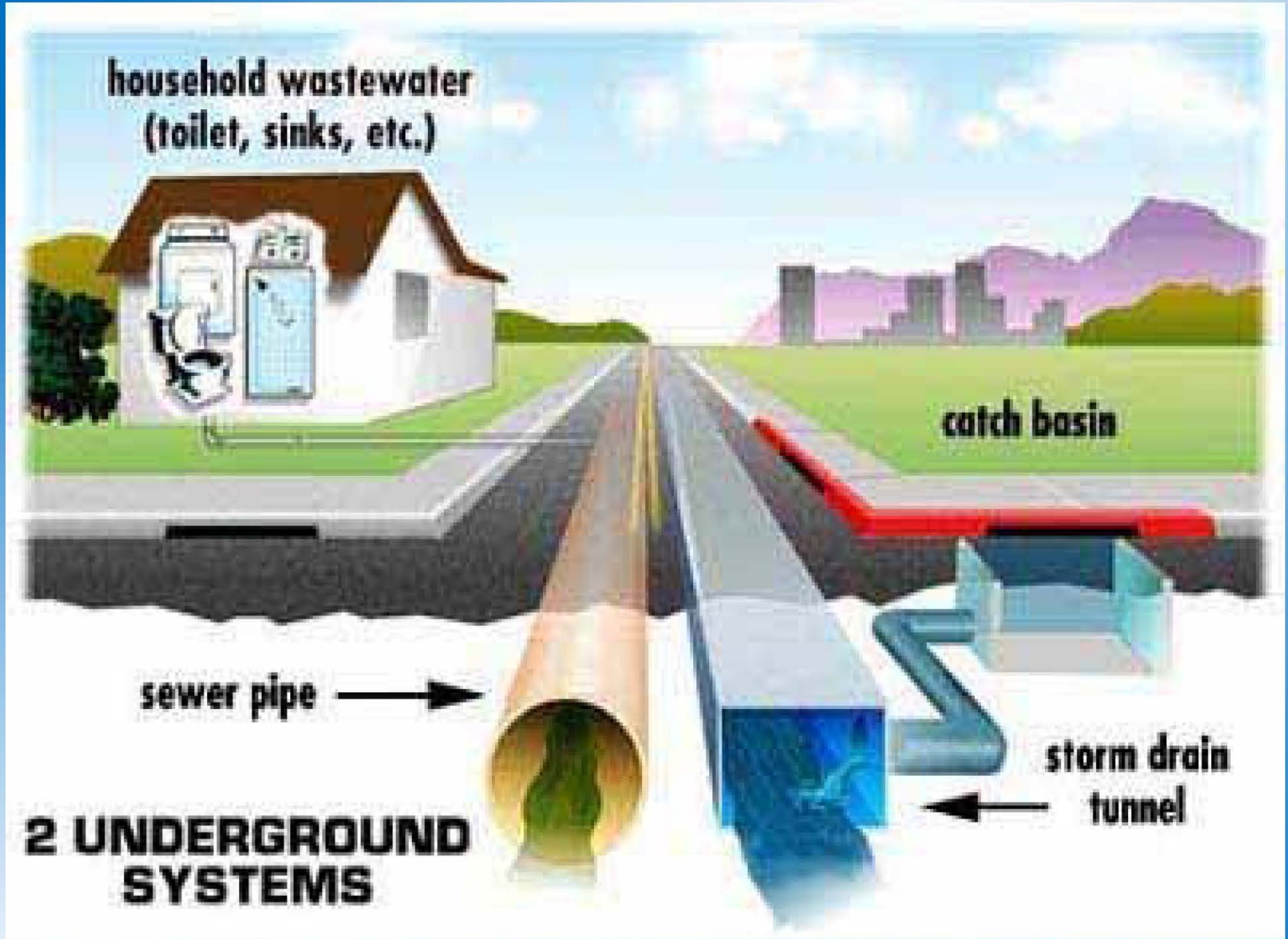
sewer pipe



storm drain
tunnel



**2 UNDERGROUND
SYSTEMS**



What is Storm Water?

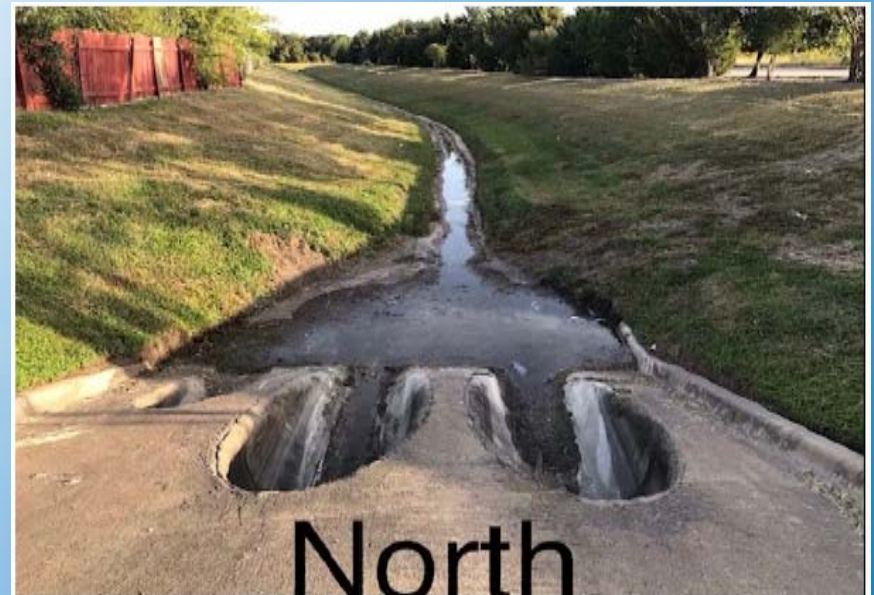
- Rain events
- Other surface runoff and drainage

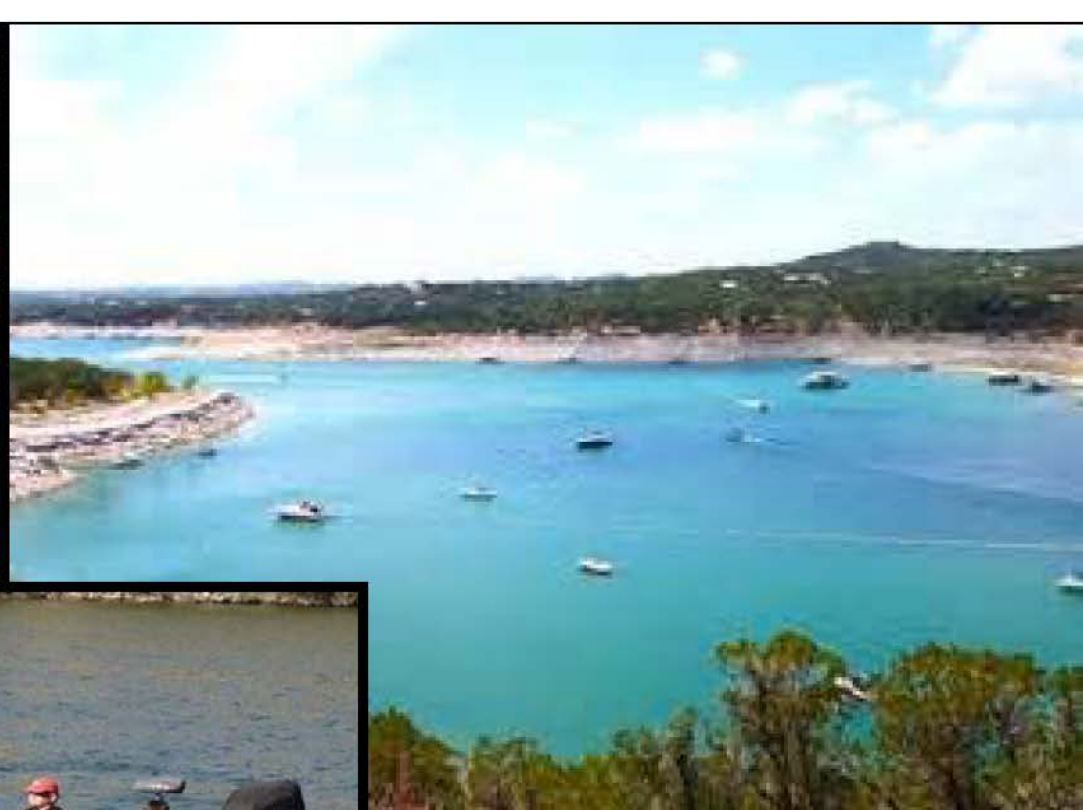


Where Does Storm Water Go In Our Community?

- Travels over land and may infiltrate into the soil or evaporate back into the atmosphere
- Carried through municipal storm sewer system (MS4)
- Discharges into Edwards Aquifer

North Bowman Pond





Clean Water

A “Point” of Confusion: Point Source vs. Nonpoint Source

- **POINT source**

- Travels through a conveyance system (rain or irrigation water)
- Regulated under permit program

- **NONPOINT source**

- Runoff that is not a point source
- Addressed through voluntary programs

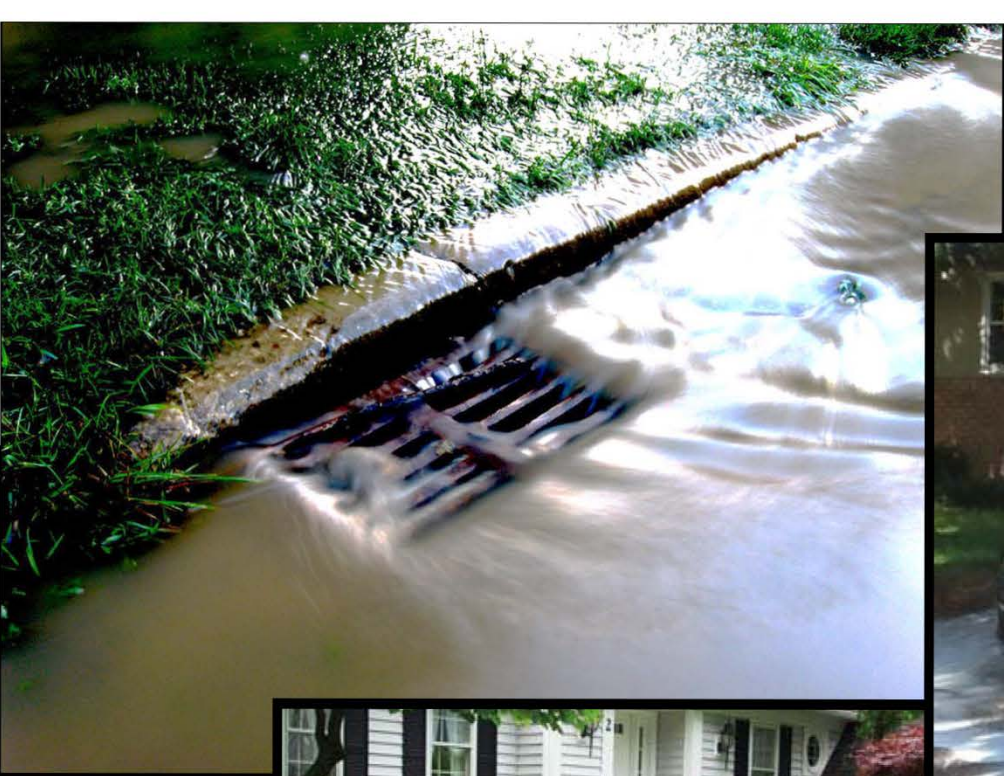
nonpoint source



Storm Water Pollutants

- Sediment
- Trace Metals
- Oil and Grease
- Nutrients
- Toxic Chemicals
- Thermal Impacts
- Bacteria
- Chlorides
- Oxygen Demand









Why is Storm Water a Problem?

- Problem: Non-storm water discharges enter systems
- Cause: Illicit discharges (household chemicals, etc.)
- Cause: Illicit connections (industrial wastewater)



**Now We Know About Storm
Water and Its Impacts on
Our Community. . .**

**But What Are We
Doing About It?**

Storm Water Permit Program for Small Communities

- New federal regulation requires a permit for our community (MS4)
- TCEQ (Texas Commission on Environmental Quality) created state permitting program to meet federal regulation

What Does Our Permit Require?

- Track and report progress toward goals
- Implement a storm water management program



Our Storm Water Program

- Public Education
- Construction Site Runoff Management
- Illicit Discharge Detection and Elimination
- Public Involvement
- Post-Construction Storm Water Management
- Good Housekeeping and Pollution Prevention

Public Education and Outreach

- Distribute educational materials developed by TCEQ and other governmental agencies

Bowman Pond

- Develop outreach plan for community



Community Involvement

- Create an public involvement plan
- Hold a public meeting on the program
- Provide public notice
- Start a volunteer program
 - Water Quality Monitoring
 - Storm Drain Stenciling
 - Stream Clean-Ups

Cyclone Ridge Pond



Illicit Discharge Detection and Elimination

- Develop storm sewer system map
- Implement program to detect non-storm water in system
- Educate community on problems related to dumping in storm sewers



Construction Site Storm Water Runoff Control

- Coordinate with Round Rock & Williamson County
 - Erosion and Sediment Control Program
- Educate construction industry and residents



Pollution Prevention & Good Housekeeping

- Train Inframark employees on good housekeeping practices
- Educate community on pollution prevention



**How Will Our
Storm Water
Program Benefit
Our Community?**

Expected Benefits of Our Storm Water Program

- Enhanced opportunities for recreation (pond improvements)
- Reduced flood damage
- Drinking water benefits
- Reduced illness
- Enhanced aesthetic value in the District

How Can You Get Involved?

- Pass on information about the storm water program to your neighbors and local businesses
- Report any storm water issues to Inframark or through the MUD website.

<https://chandlercreekmud.org/>



For More Information. . .

- Email Tobin Hurley Tobin.Hurley@Inframark.com
- Email MCC Board Directors
 - walter.berry@chandlercreekmud.org ; bob.wohlford@chandlercreekmud.org ; shelley.janda@chandlercreekmud.org ; adrian.bustillos@chandlercreekmud.org ; cassandra.brown@chandlercreekmud.org
- Call Inframark 512-820-5297