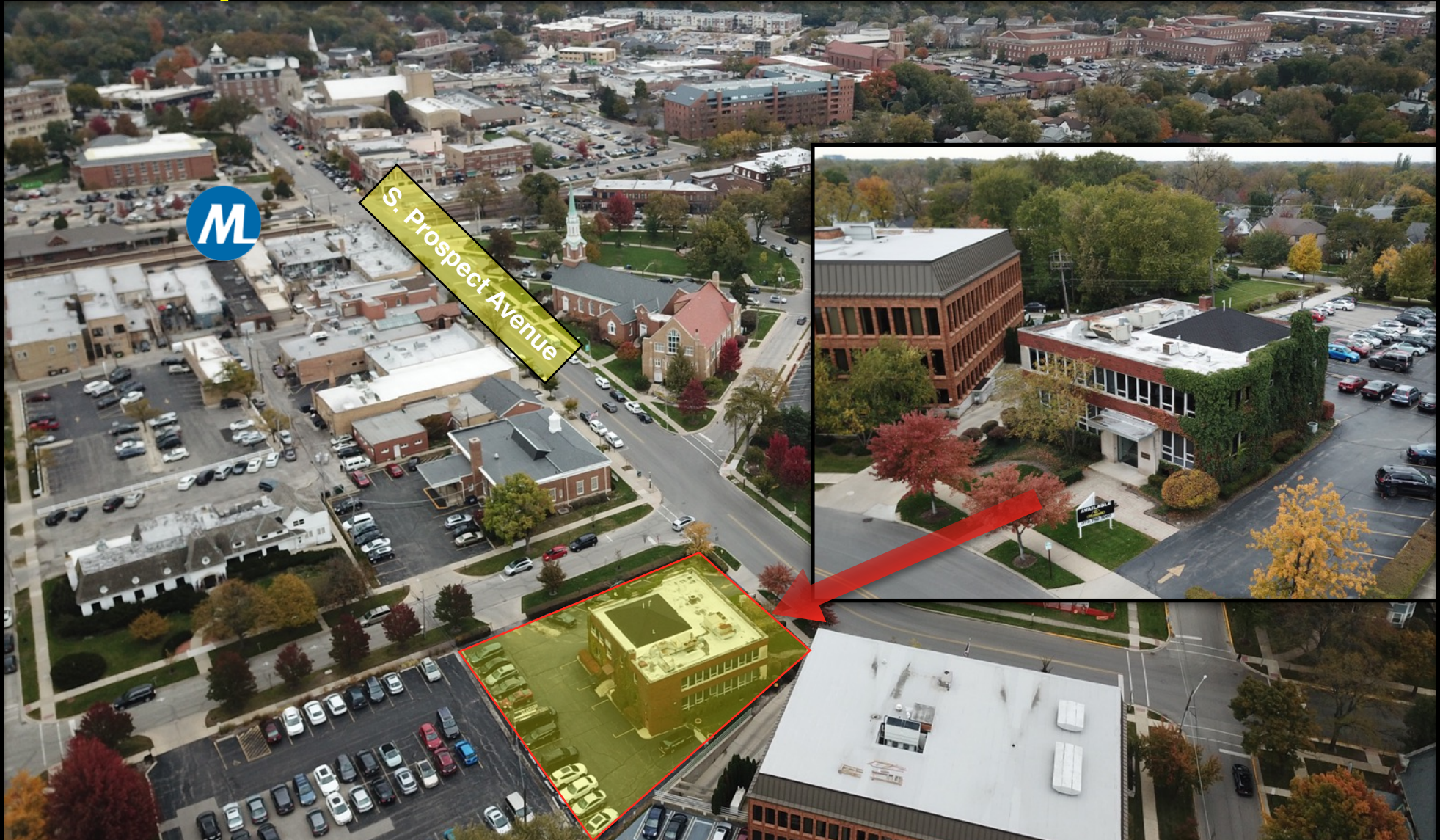


Available
For Lease



Uptown Park Ridge - Office Building

200 S. Prospect Avenue, Park Ridge, IL 60068



CONTACT INFORMATION

John O'Flaherty | Broker | O: 773.792.3000 | C: 773.406.5800 | john@troyrealtyltd.com

Stephen Cioromski | Brokers Associate | O: 773.792.3000 | C: 847.612.8716 | stephen@troyrealtyltd.com

The information contained herein is from other sources believed to be reliable. No independent investigation of the property or the information contained herein has been made, and no representation is made as to the accuracy or completeness thereof. Terms are subject to errors, omissions and change without notice.

www.troy-companies.com



Property Highlights

200 S. Prospect Avenue, Park Ridge, IL 60068

Property Overview

This office building is situated in the heart of Uptown Park Ridge. Access to shops, restaurants, and the Metra are all within walking distance.

The building is composed of three levels and is perfect for a single tenant user, or ownership is willing to divide the suites and work with tenants to accommodate their office needs.

- Ground Floor - 2,400 SF
- First Floor - 3,400 SF
- Second Floor - 3,400 SF



Asking Rate: \$18/psf - \$22/psf Net

- Approx. 9200 +/- Square Foot Building
- 27 off street parking spaces
- Move in ready
- Divisible down to 2,400 SF suite

CONTACT INFORMATION

John O'Flaherty | Broker | O: 773.792.3000 | C: 773.406.5800 | john@troyrealtyltd.com

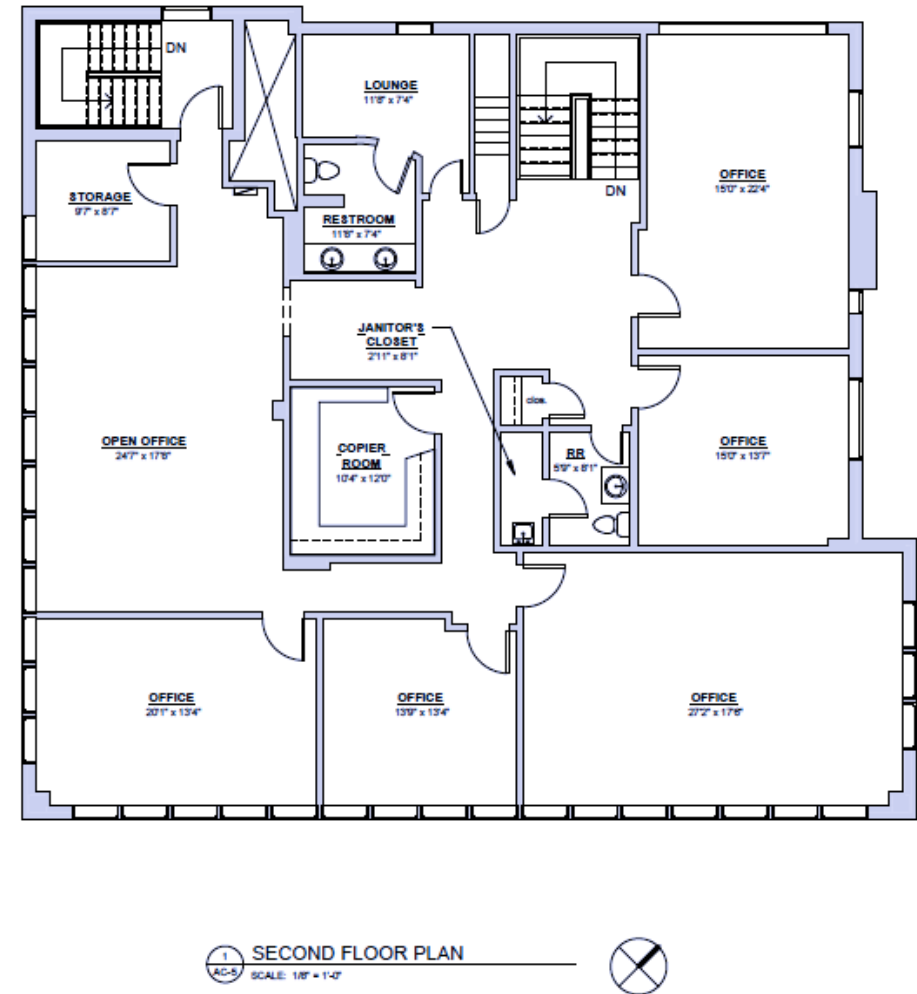
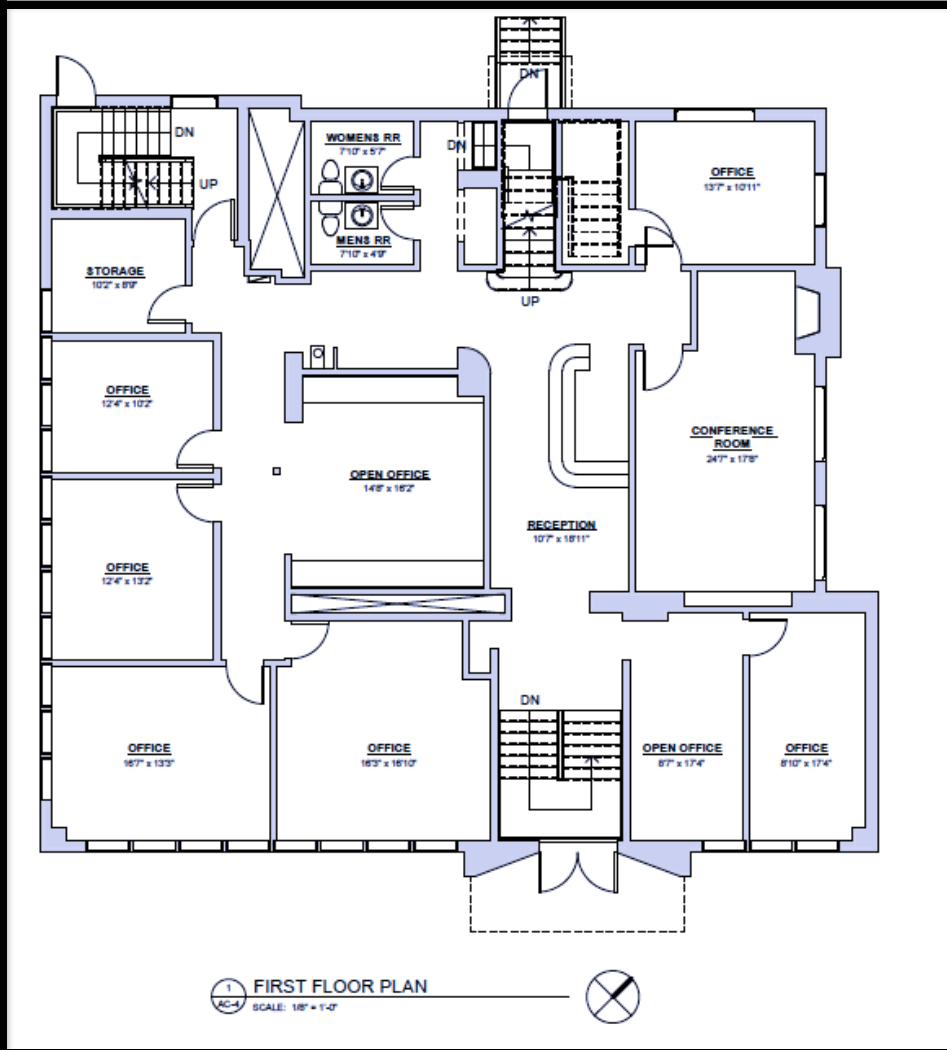
Stephen Cioromski | Brokers Associate | O: 773.792.3000 | C: 847.612.8716 | stephen@troyrealtyltd.com

The information contained herein is from other sources believed to be reliable. No independent investigation of the property or the information contained herein has been made, and no representation is made as to the accuracy or completeness thereof. Terms are subject to errors, omissions and change without notice.

www.troy-companies.com

Floor Plans

200 S. Prospect Avenue, Park Ridge, IL 60068



*Lower Level Floor Plan not shown

CONTACT INFORMATION

John O'Flaherty | Broker | O: 773.792.3000 | C: 773.406.5800 | john@troyrealtyltd.com

Stephen Cioromski | Brokers Associate | O: 773.792.3000 | C: 847.612.8716 | stephen@troyrealtyltd.com

The information contained herein is from other sources believed to be reliable. No independent investigation of the property or the information contained herein has been made, and no representation is made as to the accuracy or completeness thereof. Terms are subject to errors, omissions and change without notice.