

TRUMP® INTERNATIONAL HOTEL  
WASHINGTON, D.C.

The most *exclusive suites* in the city.



Trump International Hotel Washington, D.C. is where extraordinary attention to detail and service surpass all others. It is where the most discerning travelers receive the excellence expected and the suite space they need and want.

From our Junior Suites to the oversized 6,300 sq. ft. Trump Townhouse, the thirty-five finely appointed suites provide luxurious amenities and offer distinct features making each stay memorable.



First and only *Forbes Five-Star Hotel*  
in downtown Washington, D.C.



## Suites & Amenities

	TRUMP TOWNHOUSE*	PRESIDENTIAL SUITE*	FRANKLIN SUITE*	POSTMASTER SUITE	CAPITOL SUITE*	WASHINGTON SUITE*	NANCY HANKS SUITE*	PENNSYLVANIA AVENUE SUITE*	DELUXE, PREMIER, EXECUTIVE ONE BEDROOMS	IVANKA SUITE*	JUNIOR SUITES
<b>SQ FT</b>	6,300	4,000	2,000	1,600	1,630	1,660	1,645	1,500	600-1270	860	530-800
<b>SQ M</b>	585	371	185	148	151	154	152	139	55-117	79	49-74

Suites at Trump International Hotel Washington, D.C.

\*Denotes signature suite

### AMENITIES

- King sized bed with signature Trump Hotels pillow top mattress
- Evening service with bottled water
- Nespresso® beverage system
- Electric sheers and drapes
- Clothes steamer
- Access to fitness center
- Daily shoe shine

### BATHROOM

- Italian marble baths
- Deep soaking tub
- Glass-enclosed shower
- Natura Bissé Diamond Collection bath amenities
- Custom designed plush bathrobes and linens

### TECHNOLOGY

- Complimentary wireless high-speed internet
- 55" Hd flat-screen television with smart device capability
- Complimentary digital access to over 5,000 newspapers and magazines
- VOIP phone calls

### ADDITIONAL AMENITIES FOR SIGNATURE SUITES

- Full mini-bar with complimentary non-alcoholic beverages
- Assistance of personal shopper for select boutiques
- Hotel car service providing transportation within the city
- Unpacking and packing services
- Walk-in closets

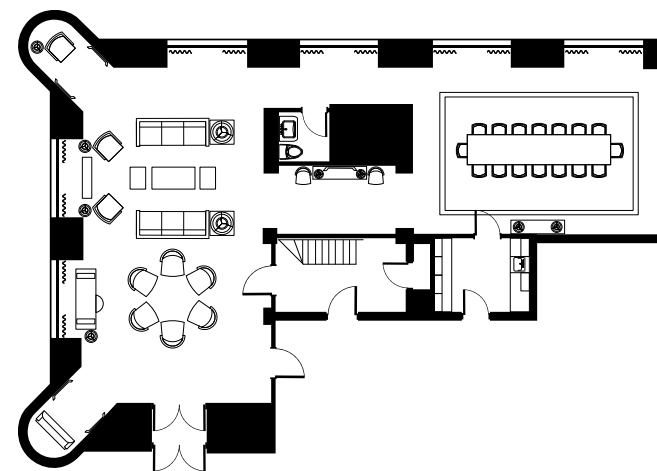


## Trump Townhouse

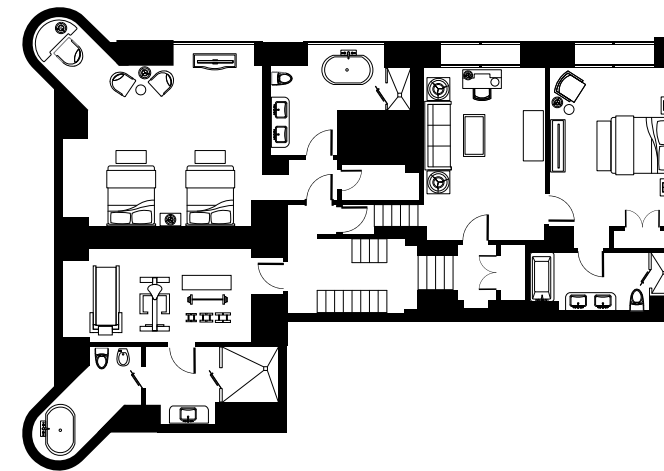
6,300 sq ft / 585 sq m

**WITH AN ENVIABLE AND EXCLUSIVE PENNSYLVANIA AVENUE ADDRESS,** the Trump Townhouse is the largest suite in Washington, D.C. Discreetly located off of the Grand Lobby the suite has a private entrance on Pennsylvania Avenue. A large light-filled living room, dining room that seats 16, and a dedicated pantry/kitchen area with separate butler entrance fills the first level. The upper level features an additional living room, two spacious bedrooms, an expansive spa bathroom, and private workout room. With 24/7 butler, chef, personal trainer and chauffeur available, The Trump Townhouse provides the best of luxury hotel accommodations in Washington, D.C.

First Floor



Second Floor

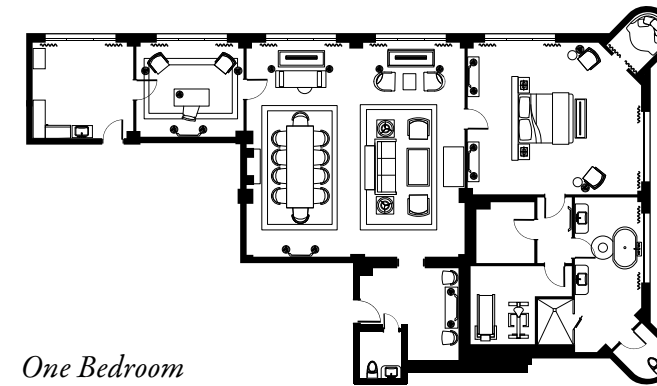




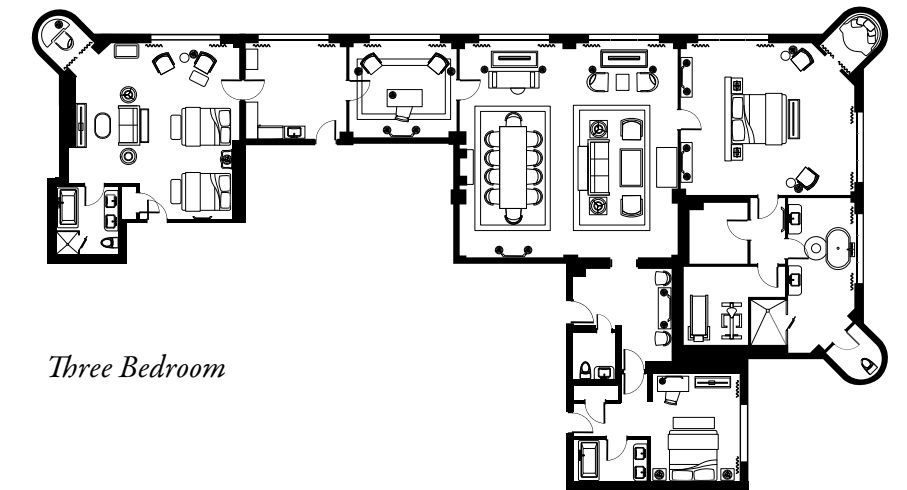
## Presidential Suite

4,000 sq ft / 371 sq m

**THE ORIGINAL OFFICE OF THE POSTMASTER GENERAL**, this suite showcases the history of the building with historic window cornices, fireplace and crown moldings. Combinable for a one, two or three-bedroom suite, the dedicated pantry/service area with separate butler entrance, dining table for ten, private study, workout room, walk-in closet and spacious marble bath have made this a suite in high demand among many elite travelers.



*One Bedroom*



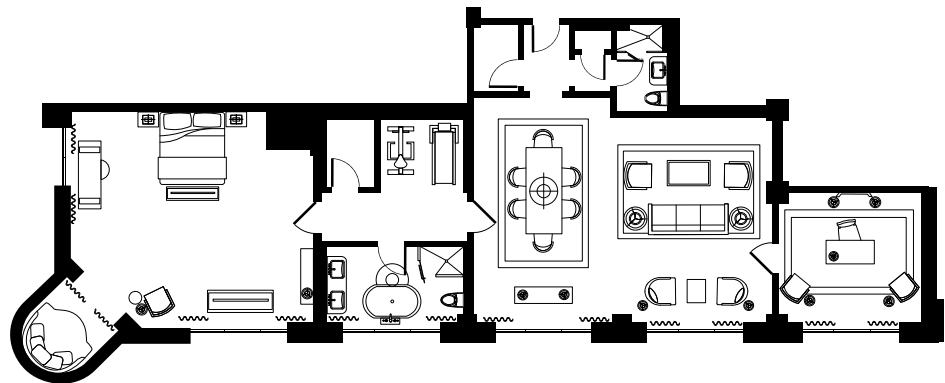
*Three Bedroom*



## Franklin Suite

2,000 sq ft / 185 sq m

**CONTEMPORARY BLUE ACCENTS HIGHLIGHT** the sunlit separate living, dining and bedroom areas as well as two full bathrooms, private study and workout space.

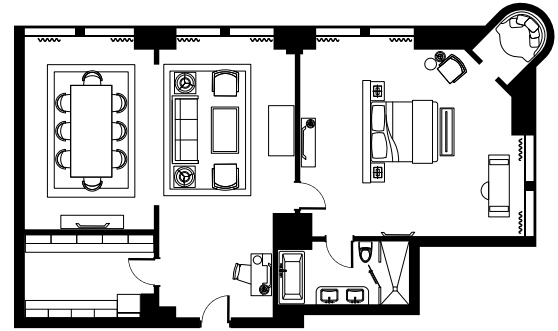




## Postmaster Suite

*1,600 sq ft / 148 sq m*

**LIGHT FILLED AND CLASSICALLY FURNISHED**, this one bedroom suite features a separate bedroom, living room, dining table for eight and convenient service pantry. The classic decor and signature blues complement the rich wood and fabrics and offer a sense of Washington, D.C. elegance.



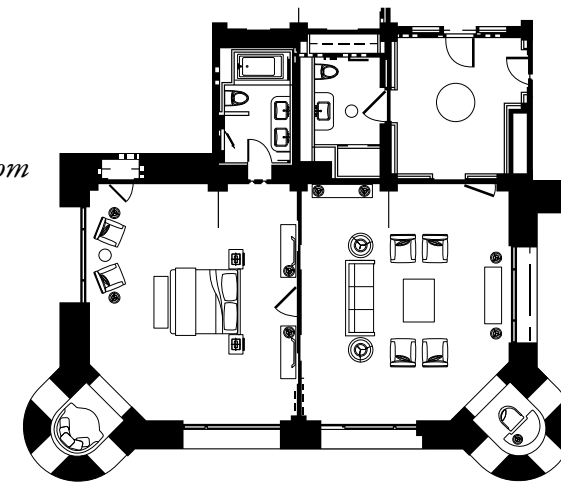


## Capitol Suite

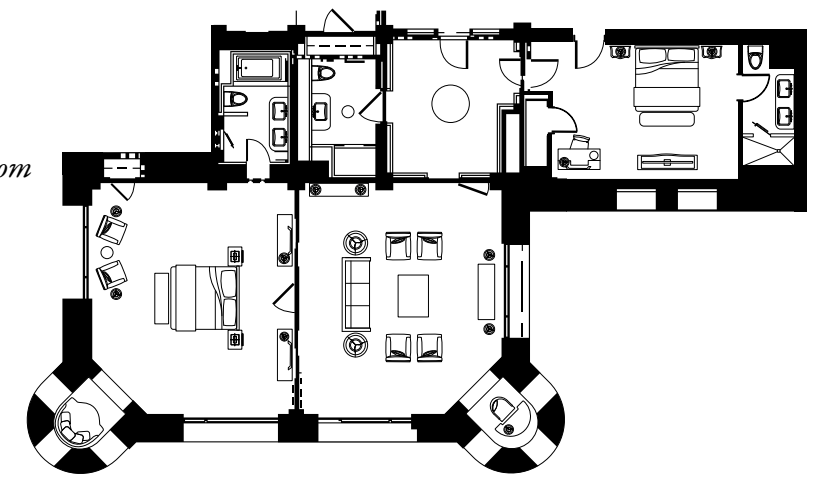
1,630 sq ft / 151 sq m

APPROPRIATELY NAMED FOR THE VIEWS OF THE U.S. CAPITOL BUILDING, these suites have two full bathrooms and a large separate living room. Each may be combined with a second connecting bedroom for a two bedroom, 2,100 sq. ft. suite.

One Bedroom



Two Bedroom



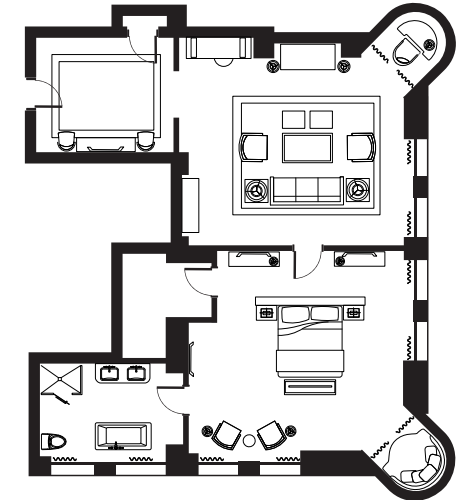




## Washington Suite

1,660 sq ft / 154 sq m

**WITH VIEWS OF THE WASHINGTON MONUMENT**, guests have a true sense of place when staying in this luxurious suite with separate living and bedroom spaces. High ceilings, spacious marble bath, and canopy bed add to the suite's refined elegance.

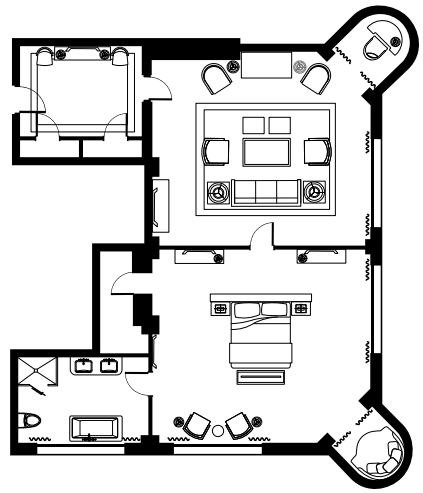




## Nancy Hanks Suite

1,645 sq ft / 152 sq m

**THIS ONE BEDROOM SUITE IS NAMED AFTER THE FORMER CHAIRMAN** of the National Endowment for the Arts credited with saving the Old Post Office from demolition and preserving it for generations to come.

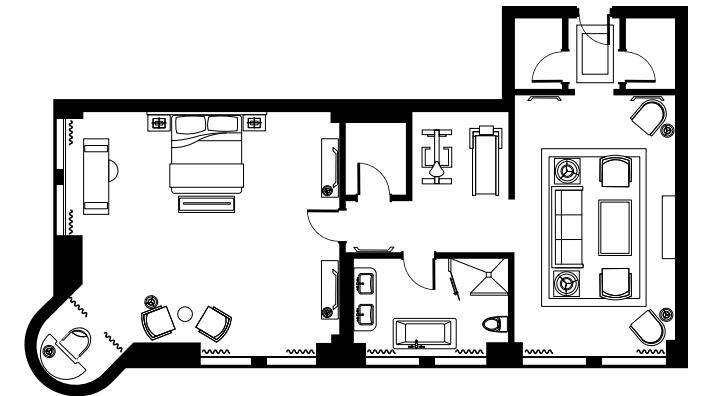




## Pennsylvania Avenue Suite

*1,500 sq ft / 139 sq m*

**NAMED FOR IT'S LOCATION ON THE NORTH SIDE OF THE PROPERTY** this spacious suite with separate living room, oversized bedroom, and marble bath offers the perfect view to overlook the activity on the most famous avenue in the country.



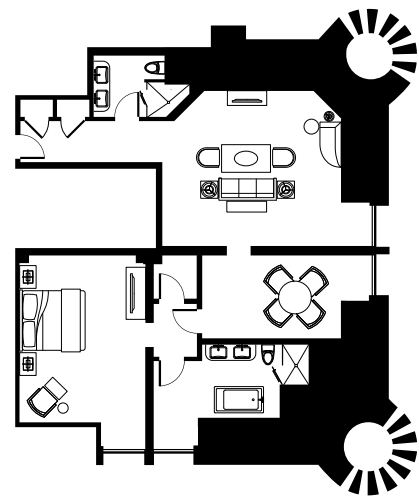


## One-Bedroom Suites

600 - 1270 sq.ft / 55-117 sq.m

**THE DELUXE, PREMIER, AND EXECUTIVE ONE BEDROOM SUITES** are furnished with classic decor and provide a warm and welcoming retreat from the bustling city on some of the highest floors of the property.

*Executive  
One Bedroom*



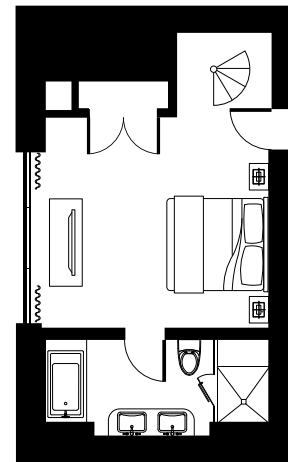


## Ivanka Suite

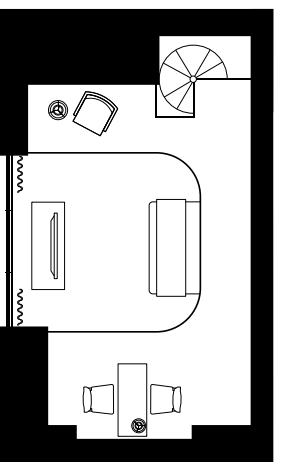
860 sq ft / 79 sq m

**THIS ONE OF A KIND SUITE WITH INTERNAL STAIRCASE** features a loft and private sitting area, executive desk and walls adorned with “timeless” photographs.

*First Floor*



*Second Floor*



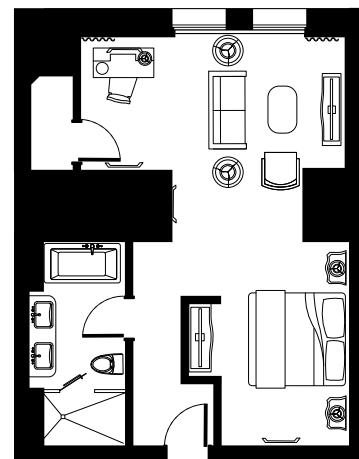


## Junior Suites

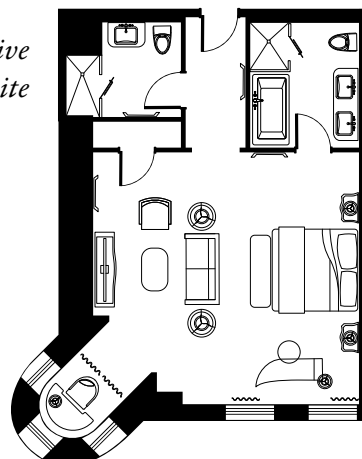
530 - 800 sq ft / 49 - 74 sq m

**THESE SPACIOUS AND LIGHT-FILLED SUITES** with city views boast classically furnished decor and richly furnished seating areas.

*Junior Suite*



*Executive Junior Suite*





[TRUMPHOTELS.COM/WASHINGTON-DC](https://trumphotels.com/washington-dc)