

## **DROP** ceiling baffle

### Drop Everything

Graceful curves do some heavy lifting with the Drop ceiling baffle system, offering a soft, organic aesthetic that delivers high-powered acoustic absorption. With varying heights, a flexible profile and the option of tapered or straight baffles, the Drop is endlessly customizable and adaptable. Made of lightweight felt, Drop is a breeze to install — easily giving you curves in all the right places.



# SPECS

## PRODUCT

Drop ceiling baffle

## CONTENT

Polyester (PET) felt  
60% pre-consumer recycled

## SIZING

Custom is TURF's standard. Everything is made to order, and can be adapted to fit unique spaces.

# SPACING

Typical spacing is dependent on the baffle depth, however 8", 10", and 12" are common.

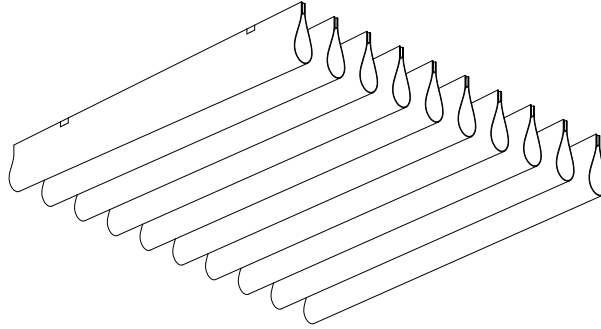
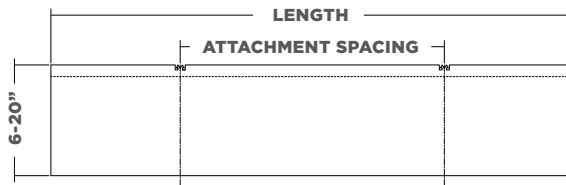
# LENGTH

Small (12" - 35.5" L)  
Medium (36" - 71.5" L)  
Large (72" - 95" L)  
Custom (96" - 119" L)

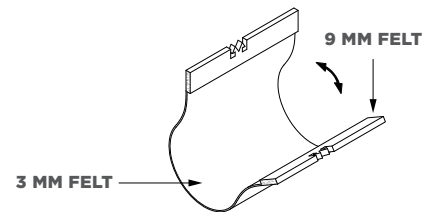
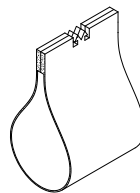
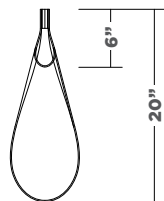
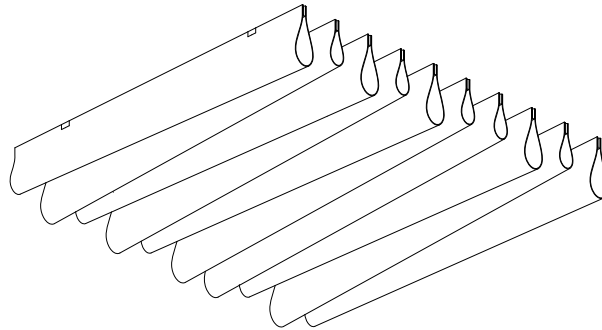
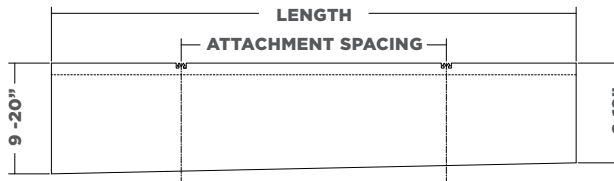
# CONNECTIONS

## FELTLOCK

## DROP STRAIGHT



## DROP TAPERED

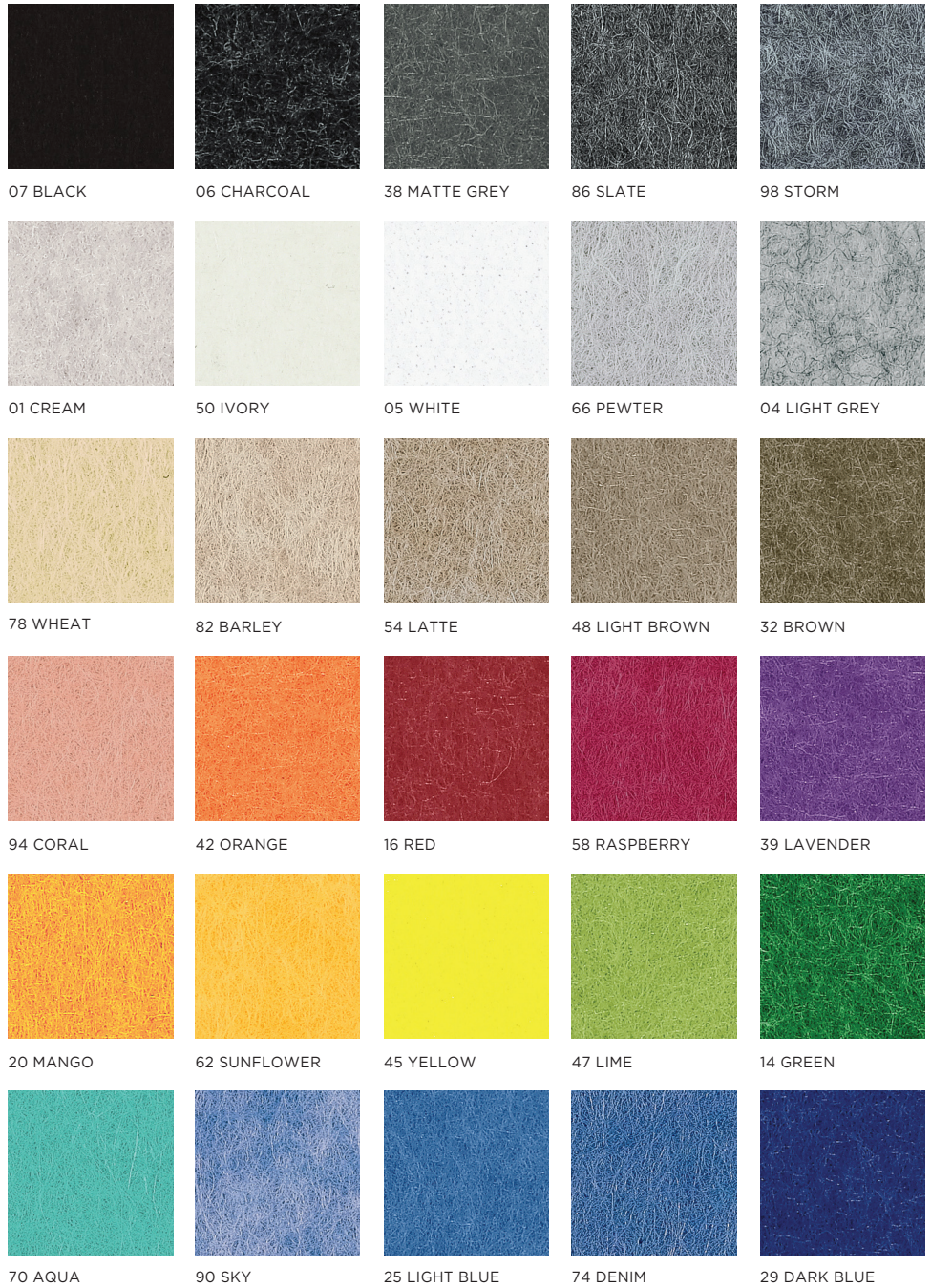


# 9MM FELT

This product is made with 9 mm PET felt board. The process used to create PET felt often results in a heathered effect where multiple tones are present. Slight variations in color should be expected when using this sustainable material.

Felt thickness is 9 mm +/- 0.5 mm.

**Monitors and printers vary. Please request a material sample to verify felt colors.**



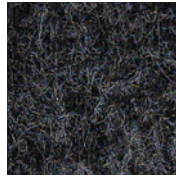
# 3MM FELT

In addition to the 9mm boards we can also integrate 3mm PET fabric into the products through lamination. The layered material enhances not only the acoustic performance, but allows for color combinations and color reveals.

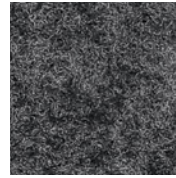
**Monitors and printers vary. Please request a material sample to verify felt colors.**



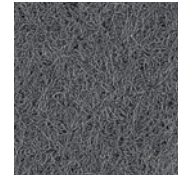
R11 BLACK



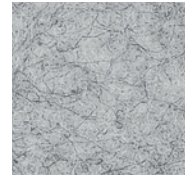
R28 MIDNIGHT



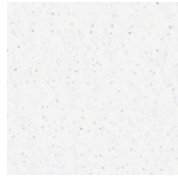
R02 DARK GREY



R25 FLINT



R03 LIGHT GREY



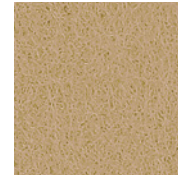
R01 WHITE



R09 BISQUE



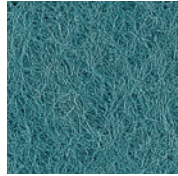
R13 PARCHMENT



R20 TAN



R07 MARIGOLD



R22 TEAL



R19 BLUE

# TECH

## ACOUSTICS

ASTM C423-17: Type J Mounting

## FIRE RATING

ASTM E-84 - Class A

## VOC

ASTM D5116 Compliant

# DETAILS

## DURABILITY

Contract

## LEAD TIME

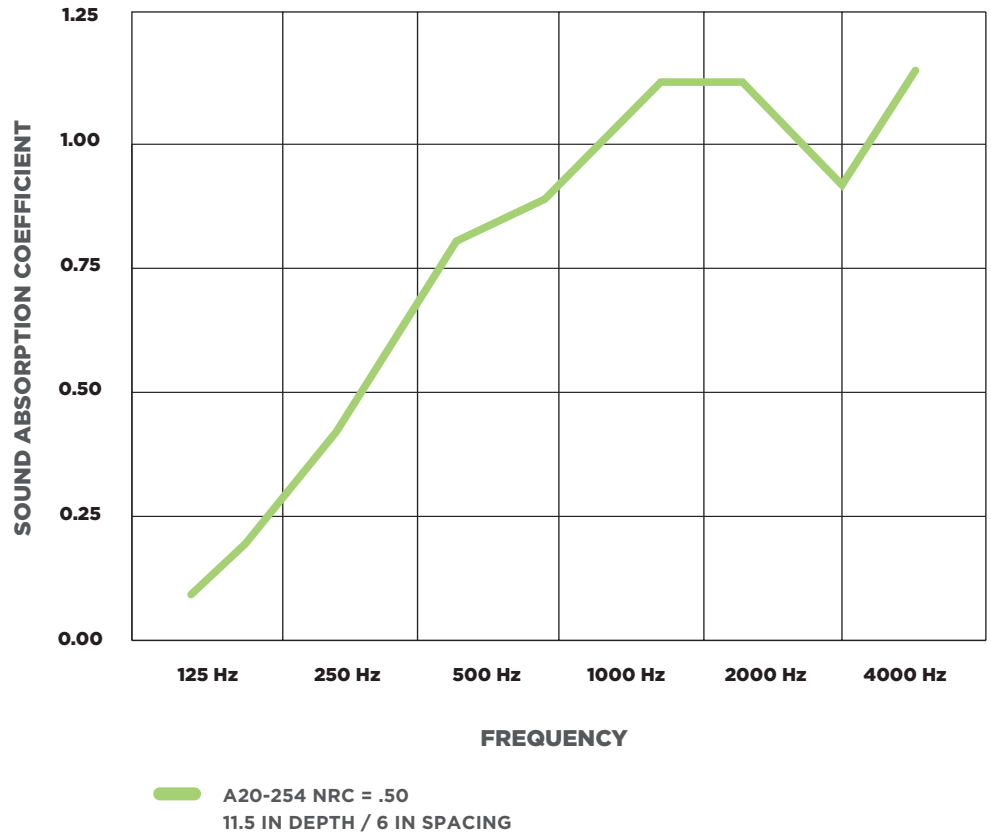
Ships in four (4) weeks

## WARRANTY

Three (3) years

## MAINTENANCE

Vacuum to remove any particulate matter and air-borne debris or dust. Compressed air can be used to dust the material in difficult to reach areas for large assemblies. Contact us for more information relative to spot cleaning.



ASTM C 423-17: Type J Mounting: The specimen is an array of spaced sound absorbing baffles suspended from a cable approximately 1206.5mm (47.5 in.) above the horizontal test surface. This approximates the mounting method of a typical ceiling baffle installation. The baffles were evenly distributed in four rows four units each. Baffles were spaced 305 (12 in.) apart. Rows were spaced 762mm (30 in. apart)

# Declare.

## TURF 9mm PET Acoustic Panel

**Turf Design**

**Final Assembly:** Elgin, Illinois, USA  
**Life Expectancy:** 50 Year(s)  
**End of Life Options:** Salvageable/Reusable in its Entirety, Recyclable (100%)

**Ingredients:**  
Polyethylene terephthalate; PET; Antioxidant 1076; Benzenamine, 4-(1-methyl-1-phenylethyl)-; N-(4-(1-methyl-1-phenylethyl)phenyl)-; Benzenepropanoic acid, 3,5-bis(1-(dimethylethyl)-4-hydroxy- octadecyl ester); Octadecanamide, N,N-12-ethanediybis; Stearic Acid; Titanium dioxide

**Living Building Challenge Criteria:** Compliant

**I-13 Red List:**  
 LBC Red List Free % Disclosed: 100% at 100ppm  
 LBC Red List Approved VOC Content: Not Applicable  
 Declared

**I-10 Interior Performance:** CDPH Standard Method v13-2010  
**I-14 Responsible Sourcing:** Not Applicable

TFD-0002  
EXP: 01 NOV 2021  
Original Issue Date: 2019

FOR MORE INFORMATION ON LBC CERTIFICATION, VISIT: [www.livingbuildingchallenge.org/declare](https://www.livingbuildingchallenge.org/declare)

