

MAZE carved wall tile

Maze turns the corner on acoustic performance with a deceptively simple pattern of diagonal lines that trap noise. Made from sound absorbing PET felt, the carved wall tile is available in a single color (9 mm) or in two-tone styles (12 and 18 mm).



PATENT PENDING

SPECS

PRODUCT

Maze carved wall tile

CONTENT

polyester (PET) felt
60% pre-consumer recycled

9MM TILE

DIMENSIONS

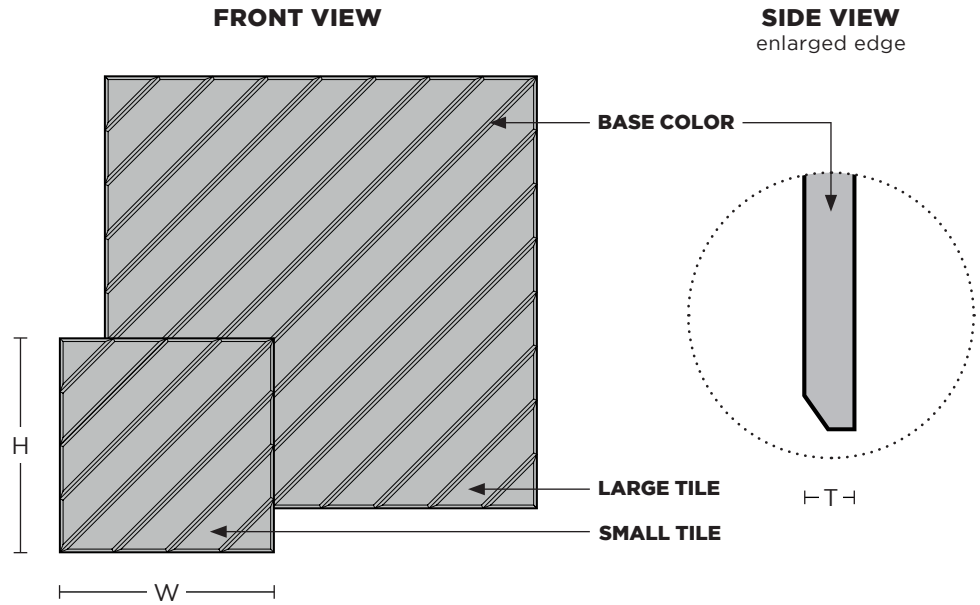
11.75" W x 11.75" H x 9 mm T (small)
23.5" W x 23.5" H x 9 mm T (large)*

FELT THICKNESS

9 mm (base)

BEVELED EDGE

carved at a 45° angle
4.5 mm from the bottom



12MM TILE

DIMENSIONS

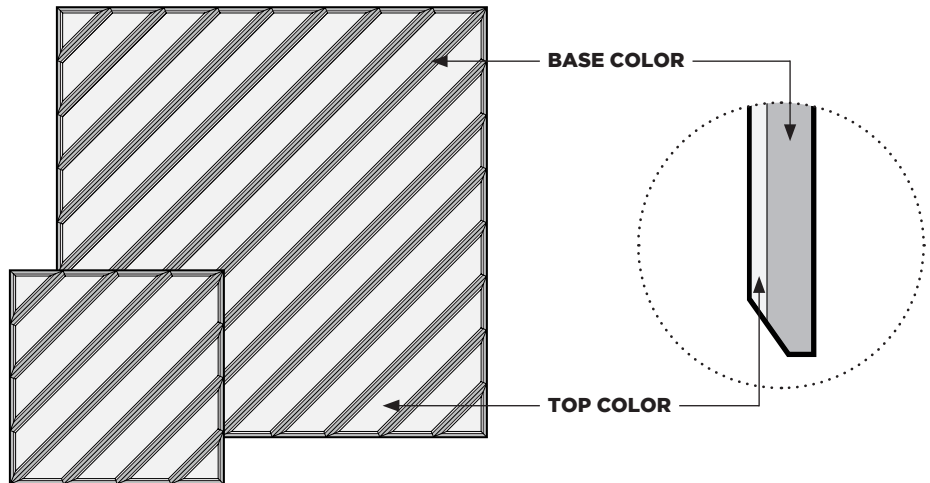
11.75" W x 11.75" H x 12 mm T (small)
23.5" W x 23.5" H x 12 mm T (large)*

FELT THICKNESS

9 mm (base) + 3 mm (top)

BEVELED EDGE

carved at a 45° angle
4.5 mm from the bottom



18MM TILE

DIMENSIONS

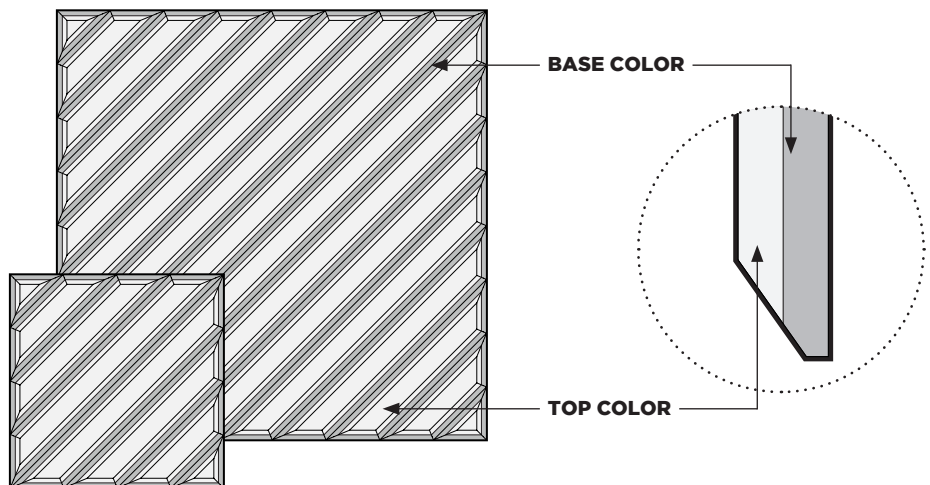
11.75" W x 11.75" H x 18 mm T (small)
23.5" W x 23.5" H x 18 mm T (large)*

FELT THICKNESS

9 mm (base) + 9 mm (top)

BEVELED EDGE

carved at a 45° angle
6.5 mm from the bottom



*Large tile carving pattern has the same scale as small tile carving pattern.



9MM FELT

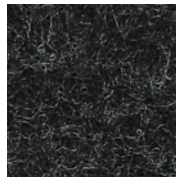
TURF's Maze carved wall tile is made with 9mm PET felt board. The process used to create PET felt often results in a heathered effect where multiple tones are present. Slight variations in color should be expected when using this sustainable material.

Felt thickness is 9mm +/- 0.5 mm.

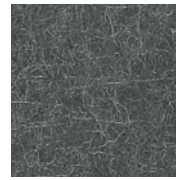
Monitors and printers vary. Please request a material sample to verify felt colors.



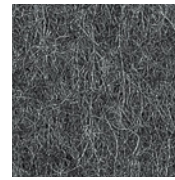
07 BLACK



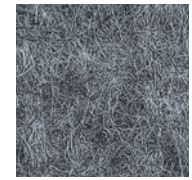
06 CHARCOAL



38 MATTE GREY



86 SLATE



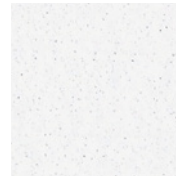
98 STORM



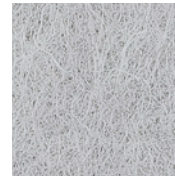
01 CREAM



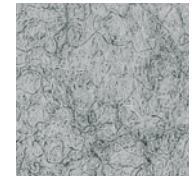
50 IVORY



05 WHITE



66 PEWTER



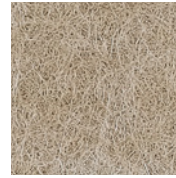
04 LIGHT GREY



78 WHEAT



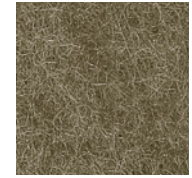
82 BARLEY



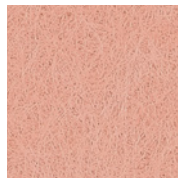
54 LATTE



48 LIGHT BROWN



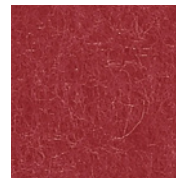
32 BROWN



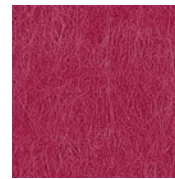
94 CORAL



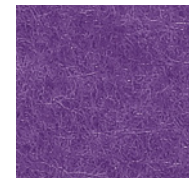
42 ORANGE



16 RED



58 RASPBERRY



39 LAVENDER



20 MANGO



62 SUNFLOWER



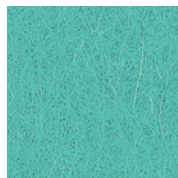
45 YELLOW



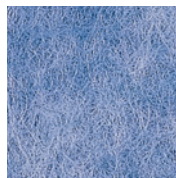
47 LIME



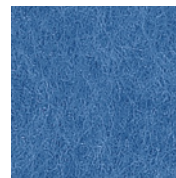
14 GREEN



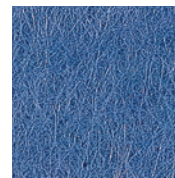
70 AQUA



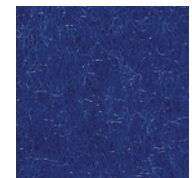
90 SKY



25 LIGHT BLUE



74 DENIM



29 DARK BLUE

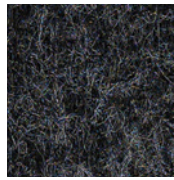
3MM FELT

In addition to the 9mm boards we can also integrate 3mm PET fabric into the products through lamination. The layered material enhances not only the acoustic performance, but allows for color combinations and color reveals.

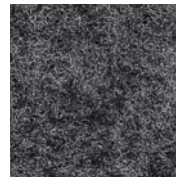
Monitors and printers vary. Please request a material sample to verify felt colors.



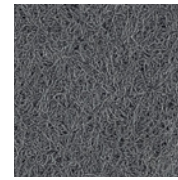
R11 BLACK



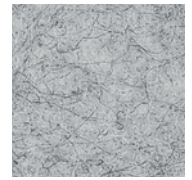
R28 MIDNIGHT



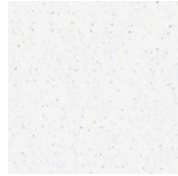
R02 DARK GREY



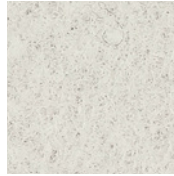
R25 FLINT



R03 LIGHT GREY



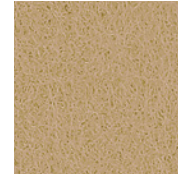
R01 WHITE



R09 BISQUE



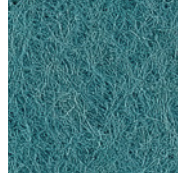
R13 PARCHMENT



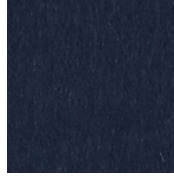
R20 TAN



R07 MARIGOLD



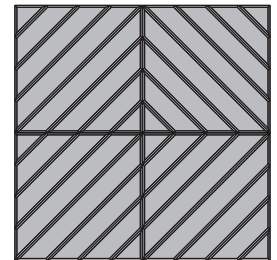
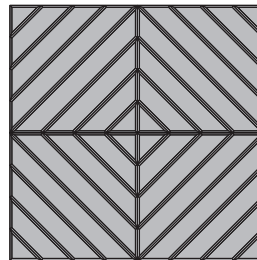
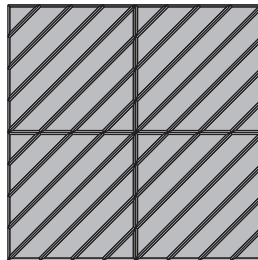
R22 TEAL



R19 BLUE

LAYOUT

Maze's square tiles can be rotated—or not—to create unique configurations.



TECH

ACOUSTICS

ASTM C423-17: Type A Mounting

FIRE RATING

ASTM E-84 - Class A

VOC

ASTM D5116 Compliant



TURF 9mm PET Acoustic Panel
Turf Design

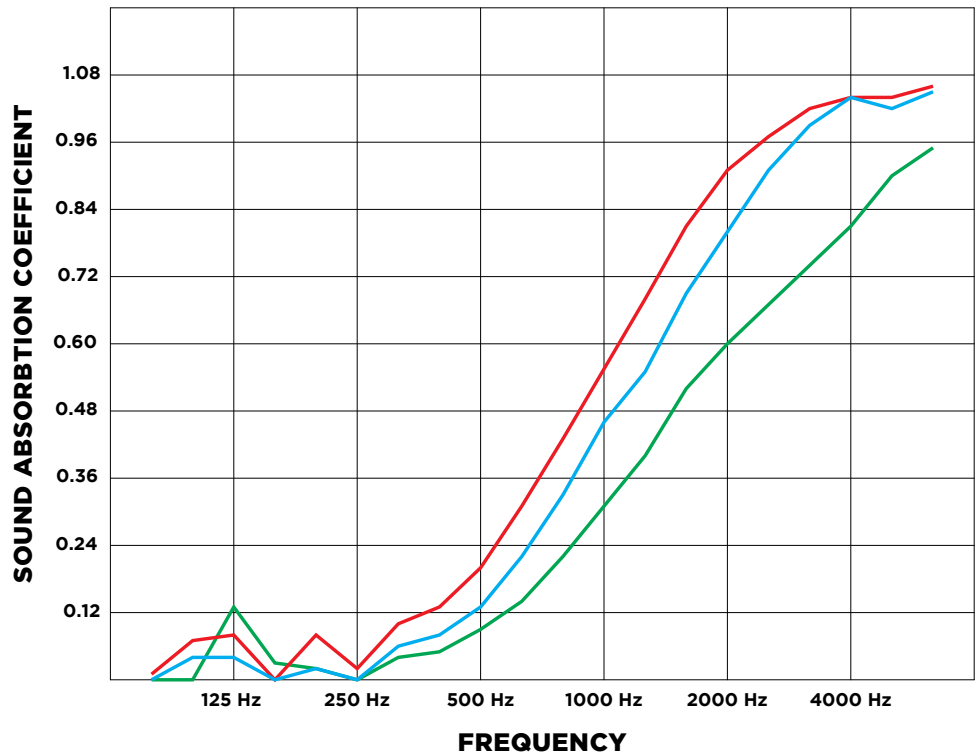
Final Assembly: Elgin, Illinois, USA
Life Expectancy: 50 Years
End of Life Options: Salvageable/Reusable in its Entirety, Recyclable (100%)

Ingredients:
Polyethylene Terephthalate; PET; Antioxidant 1076; Benzenamine, 4-(1-Methyl-1-Phenylethyl)-N-[4-(1-Methyl-1-Phenylethyl)Phenyl]-, Benzenepropanoic Acid, 3,5-Bis(1,1-Dimethylethyl)-4-Hydroxy-, Octadecyl Ester, Octadecanamide, N,N'-1,2-Ethanediybis-, Stearic Acid, Titanium Dioxide

Living Building Challenge Criteria:

TFD-0002	EXP 01 DEC 2020
VOC Content: N/A	VOC Emissions: CDPH Compliant
Declaration Status	<input checked="" type="checkbox"/> LBC Red List Free
	<input type="checkbox"/> LBC Compliant
	<input type="checkbox"/> Declared

MANUFACTURER RESPONSIBLE FOR LABEL ACCURACY
INTERNATIONAL LIVING FUTURE INSTITUTE™ declareproducts.com



9MM TILE: NRC = 0.25 12MM TILE: NRC = 0.35 18MM TILE: NRC = 0.40

ASTM C423-17: Type A Mounting. Carved wall tile NRC varies depending on field conditions and arrangement. Contact TURF for testing details.

DETAILS

LEAD TIME

ships in four (4) weeks

INSTALLATION

Maze is available with or without an adhesive backing. More information is available in the carved wall tile installation instructions.

WARRANTY

three (3) years

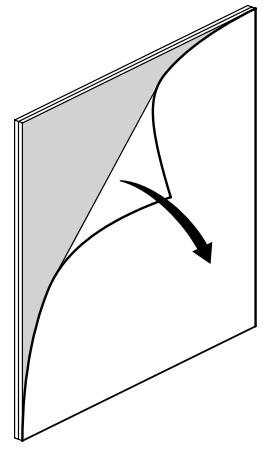
MAINTENANCE

Vacuum occasionally to remove any particulate matter and air-borne debris or dust. Compressed air can be used to dust the material in difficult to reach areas for large assemblies. Use standard household cleaners for spot cleaning.

CUSTOM

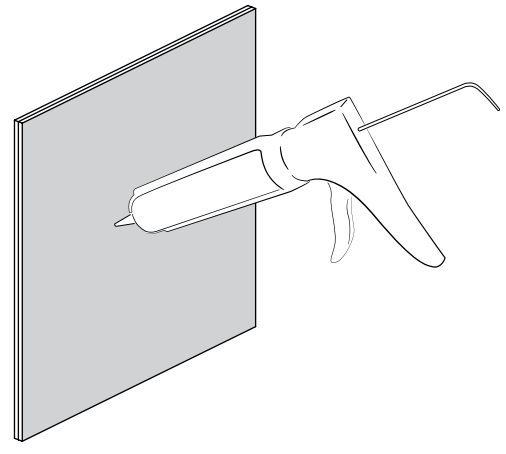
Maze carved wall tiles may be customized with additional layers and colors. Contact your rep for details.

ADHESIVE BACKING



A manufacturer-applied adhesive backing is available. The pressure-activated backing instantly adheres to a variety of wall surfaces.

CONSTRUCTION ADHESIVE



Carved wall tiles without an adhesive backing should be installed with a construction-grade adhesive specified by the contractor.

