

## **PLANK** carved wall tile

Respect the rectangle (and its incredible design potential). Plank carved wall tile lets you build a range of designs, from classic herringbones to random stacks of dots and dashes. What's Morse code for "all while reducing noise"? Made from sound-absorbing PET felt, this carved wall tile is available in TURF's 9 mm felt colors.



# SPECS

## PRODUCT

Plank carved wall tile

## CONTENT

Polyester (PET) felt  
60% pre-consumer recycled

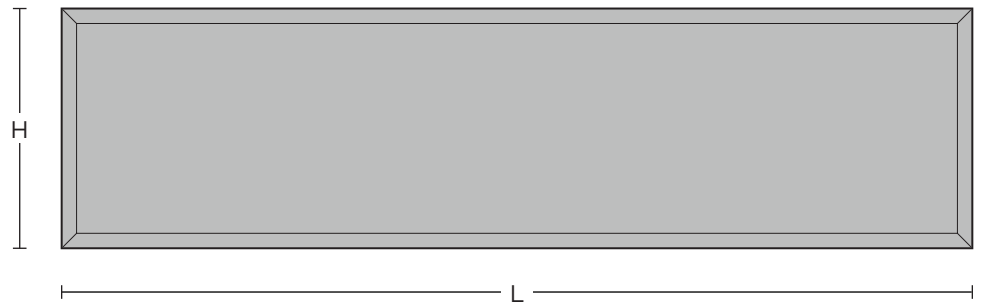
## FELT THICKNESS

9 mm

## BEVELED EDGE

Carved at a 45° angle  
4.5 mm from the bottom

## ELEVATION



# DIMENSIONS

TURF's carved wall tiles are made to order. These suggested sizes fit nicely together, but any size is available up to 47" square.

## STANDARD LENGTHS

11.75" L  
23.5" L  
47" L

## MAX LENGTH

47" L

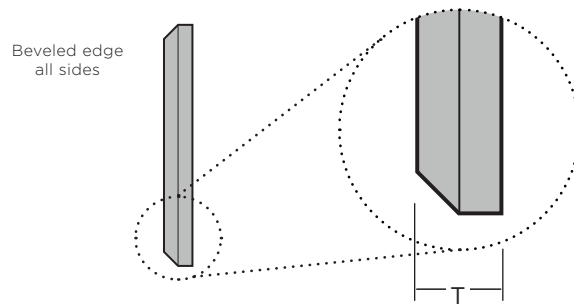
## STANDARD HEIGHTS

3" H  
4.5" H  
6" H

## MAX HEIGHT

47" H

## SIDE ELEVATION

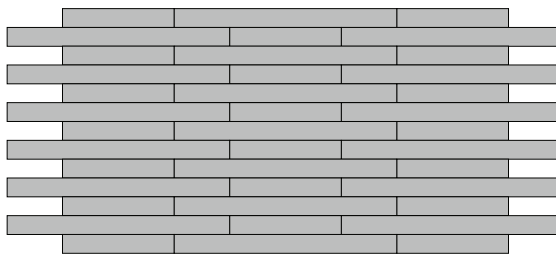


# LAYOUT

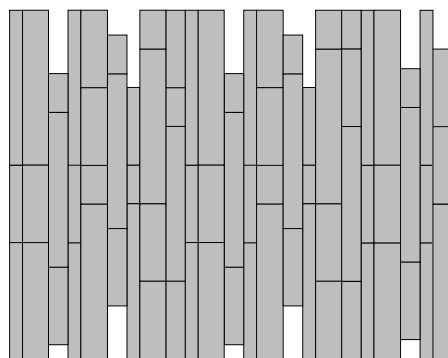
With nine different standard sizes and 17 colors, Plank's simple shape can make complex patterns.

Trim Plank tiles in the field to accommodate doorways and corners.

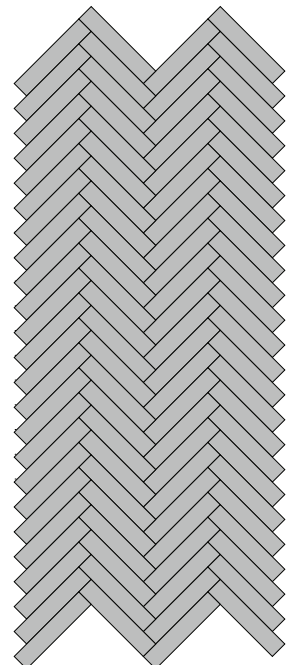
We recommend ordering additional materials to account for on-site trimming and adjustments as site conditions require.



running bond with alternating 47" L x 6" H and 23.5" L x 6" H tiles



semi-stacked vertical bond with all nine standard sizes



herringbone of 11.75" L x 6" H tiles

# 9MM FELT

TURF's Plank carved wall tile is made with 9mm recycled PET felt board.

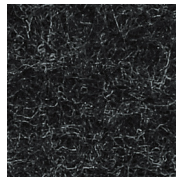
The process used to create PET felt often results in a heathered effect where multiple tones are present. Slight variations in color should be expected when using this sustainable material.

Felt thickness is 9mm +/- 0.5 mm.

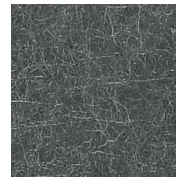
**Monitors and printers vary. Please request a material sample to verify felt colors.**



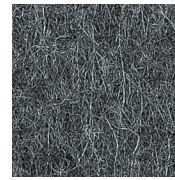
07 BLACK



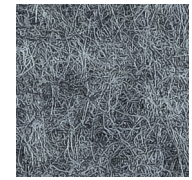
06 CHARCOAL



38 MATTE GREY



86 SLATE



98 STORM



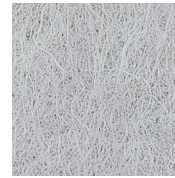
01 CREAM



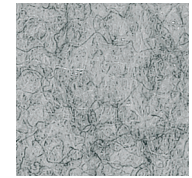
50 IVORY



05 WHITE



66 PEWTER



04 LIGHT GREY



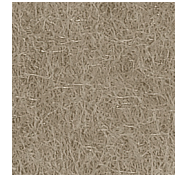
78 WHEAT



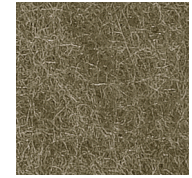
82 BARLEY



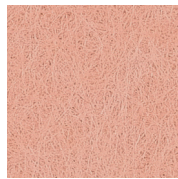
54 LATTE



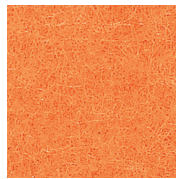
48 LIGHT BROWN



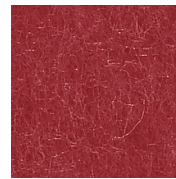
32 BROWN



94 CORAL



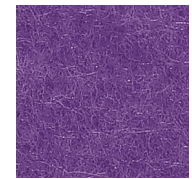
42 ORANGE



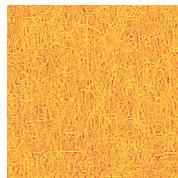
16 RED



58 RASPBERRY



39 LAVENDER



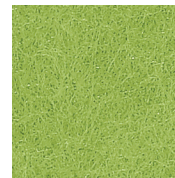
20 MANGO



62 SUNFLOWER



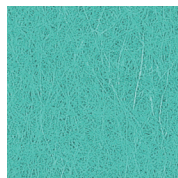
45 YELLOW



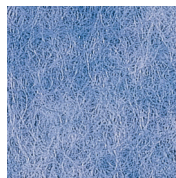
47 LIME



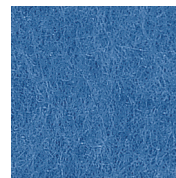
14 GREEN



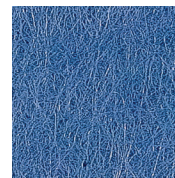
70 AQUA



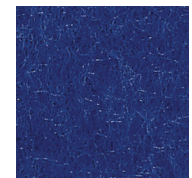
90 SKY



25 LIGHT BLUE



74 DENIM



29 DARK BLUE

# TECH

## ACOUSTICS

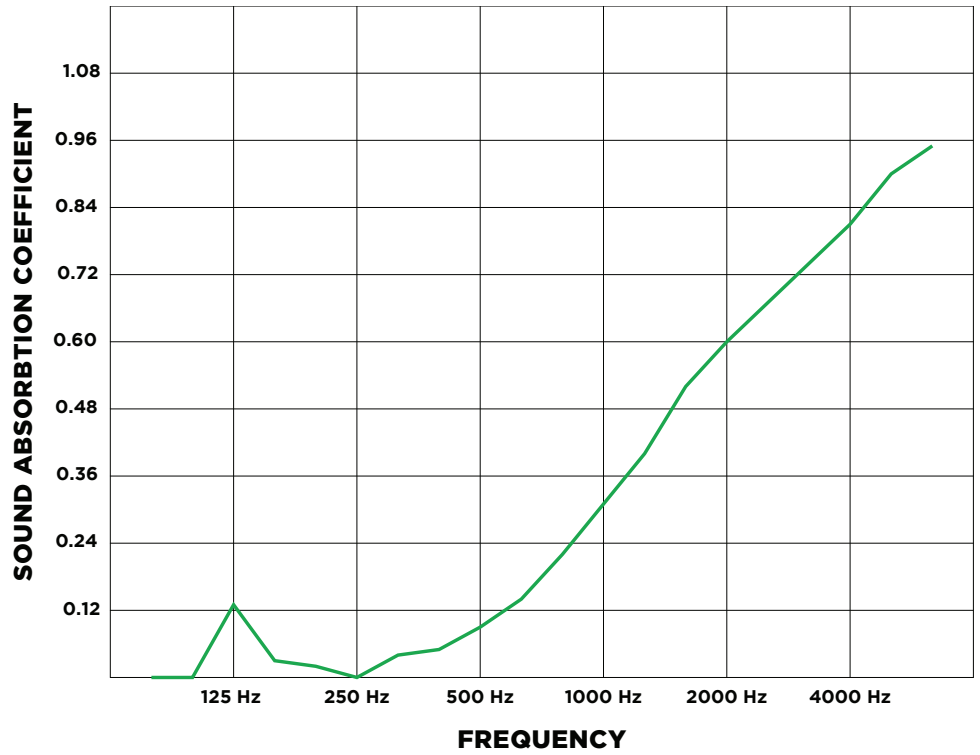
ASTM C423-17: Type A Mounting

## FIRE RATING

ASTM E-84 - Class A

## VOC

ASTM D5116 Compliant



9MM TILE: NRC = 0.25

ASTM C 423-17: Type A Mounting. Carved wall tile NRC varies depending on field conditions and arrangement. Contact TURF for testing details.

# INSTALLATION

Plank is available with or without an adhesive backing. More information is available in the carved wall tile installation instructions.

## LEAD TIME

Ships in four (4) weeks

## WARRANTY

Three (3) years

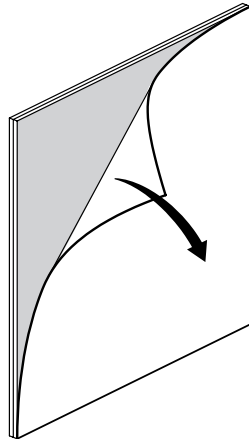
## MAINTENANCE

Vacuum occasionally to remove any particulate matter and air-borne debris or dust. Compressed air can be used to dust the material in difficult to reach areas for large assemblies. Use standard household cleaners for spot cleaning.

## CUSTOM

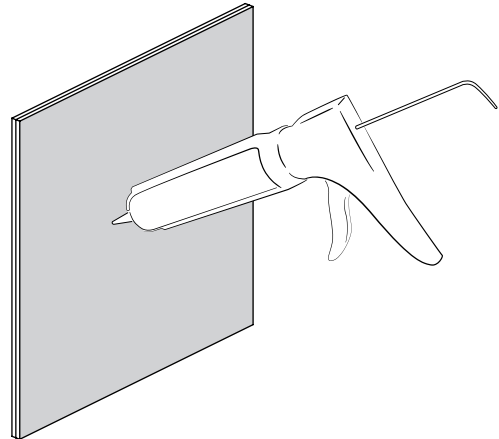
Plank carved wall tiles may be customized with additional layers and colors. Contact your rep for details.

## ADHESIVE BACKING



A manufacturer-applied adhesive backing is available. The pressure-activated backing instantly adheres to a variety of wall surfaces.

## CONSTRUCTION ADHESIVE



Carved wall tiles without an adhesive backing should be installed with a construction-grade adhesive specified by the contractor.