

## REED wall panel

Between the Lines

Drown out distractions with Reed, the acoustic wall panel system that defines your space with quiet grace. With its beautiful, undulating form, Reed is endlessly flexible and adaptable. Its design speaks louder than words — and has an acoustic performance that makes sure of it.



PATENT PENDING

# SPECS

## PRODUCT

Reed

## CONTENT

Polyester (PET) felt  
60% pre-consumer recycled

## SIZING

Custom is TURF's standard.  
Everything is made to order and  
can be adapted to fit any height.

# DIMENSIONS

## HEIGHT

24" - 120"

## WIDTH

12 or 24"

## STANDARD DEPTH

3" D

## FELT THICKNESS

9 mm

# CONNECTIONS

## Z-CLIP

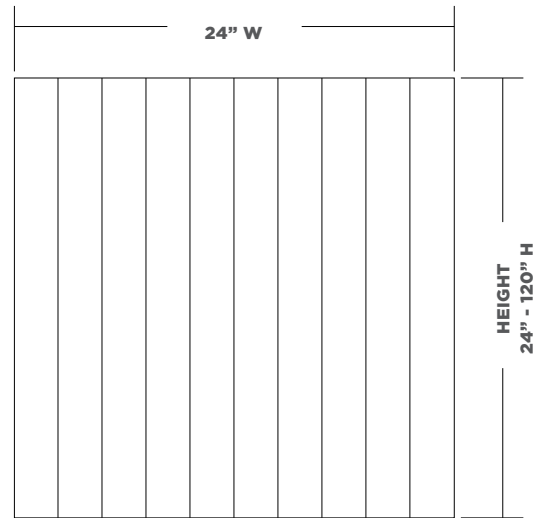
## CONNECTION BY OTHERS

Construction Adhesive

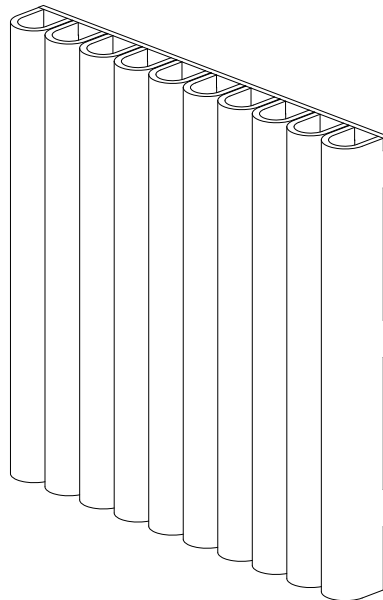
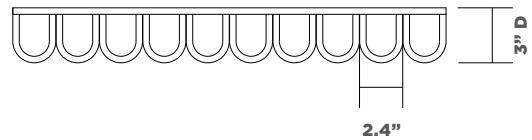
**SIDE**



**FACE**



**TOP**



# 9MM FELT

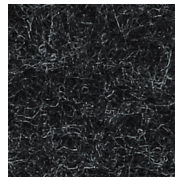
This product is made with 9 mm PET felt board. The process used to create PET felt often results in a heathered effect where multiple tones are present. Slight variations in color should be expected when using this sustainable material.

Felt thickness is 9 mm +/- 0.5 mm.

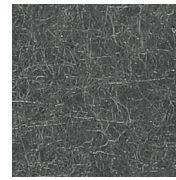
**Monitors and printers vary. Please request a material sample to verify felt colors.**



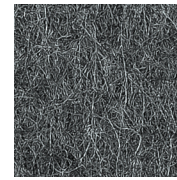
07 BLACK



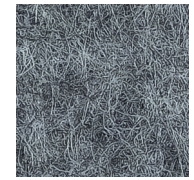
06 CHARCOAL



38 MATTE GREY



86 SLATE



98 STORM



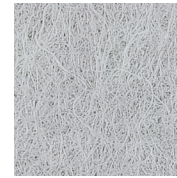
01 CREAM



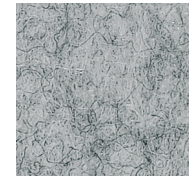
50 IVORY



05 WHITE



66 PEWTER



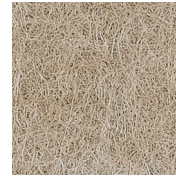
04 LIGHT GREY



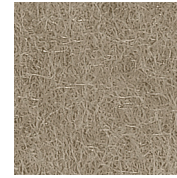
78 WHEAT



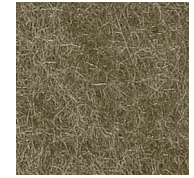
82 BARLEY



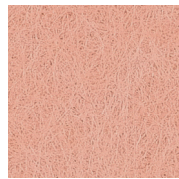
54 LATTE



48 LIGHT BROWN



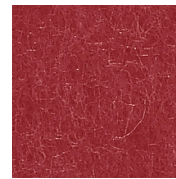
32 BROWN



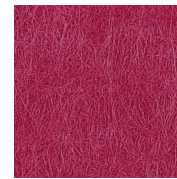
94 CORAL



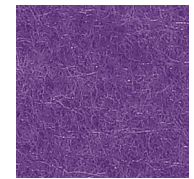
42 ORANGE



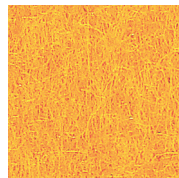
16 RED



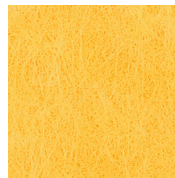
58 RASPBERRY



39 LAVENDER



20 MANGO



62 SUNFLOWER



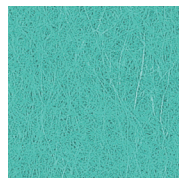
45 YELLOW



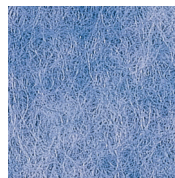
47 LIME



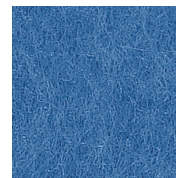
14 GREEN



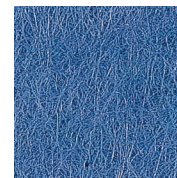
70 AQUA



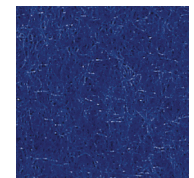
90 SKY



25 LIGHT BLUE



74 DENIM



29 DARK BLUE

# TECH

## ACOUSTICS

ASTM C423-17: Type A Mounting

## FIRE RATING

ASTM E-84 - Class A

## VOC

ASTM D5116 Compliant

# DETAILS

## DURABILITY

Contract

## LEAD TIME

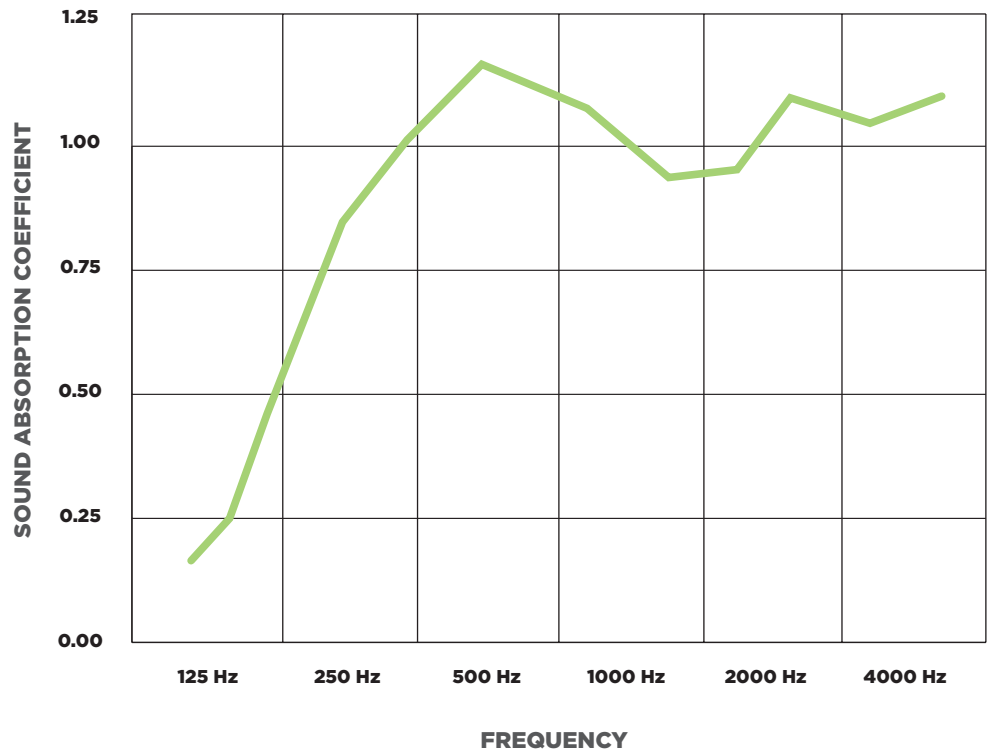
Ships in four (4) weeks

## WARRANTY

Three (3) years

## MAINTENANCE

Vacuum to remove any particulate matter and air-borne debris or dust. Compressed air can be used to dust the material in difficult to reach areas for large assemblies. Contact us for more information relative to spot cleaning.



— NRC = .92

ASTM C423-17: Type A Mounting: The specimen mounting was laid directly against the test surface. Perimeter edges were sealed with metal framing.

**Declare.**

**TURF 9mm PET Acoustic Panel**  
Turf Design

Final Assembly: Elgin, Illinois, USA  
Life Expectancy: 50 Years  
End of Life Options: Salvageable/Reusable in its Entirety, Recyclable (100%)

Ingredients:

Polyethylene Terephthalate; PET; Antioxidant 1076; Benzenamine, 4-(1-Methyl-1-Phenylethyl)-N-[4-(1-Methyl-1-Phenylethyl)Phenyl]-; Benzenepropanoic Acid, 3,5-Bis(1,1-Dimethylethyl)-4-Hydroxy-, Octadecyl Ester, Octadecanamide, N,N'-1,2-Ethanediybis-, Stearic Acid, Titanium Dioxide

Living Building Challenge Criteria:

TFD-0002 EXP 01 DEC 2020  
VOC Content: N/A VOC Emissions: CDPH Compliant  
Declaration Status  LBC Red List Free  
 LBC Compliant  
 Declared

MANUFACTURER RESPONSIBLE FOR LABEL ACCURACY  
INTERNATIONAL LIVING FUTURE INSTITUTE™ [declareproducts.com](http://declareproducts.com)

