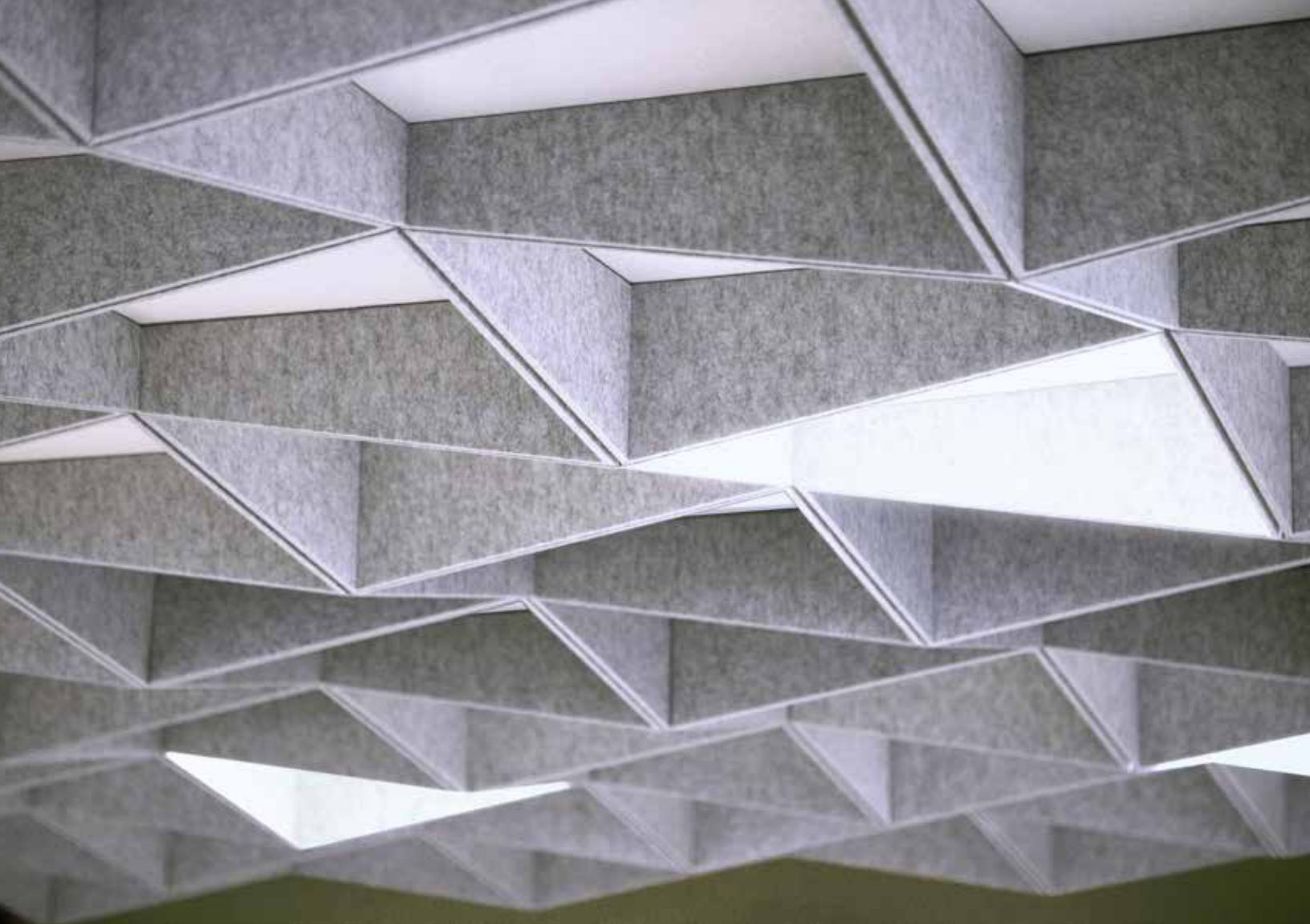


Switchblade

by

T U R F

PATENT PENDING

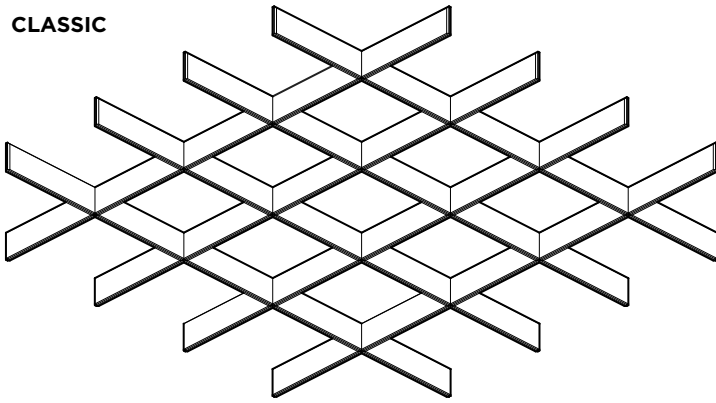


Switchblade

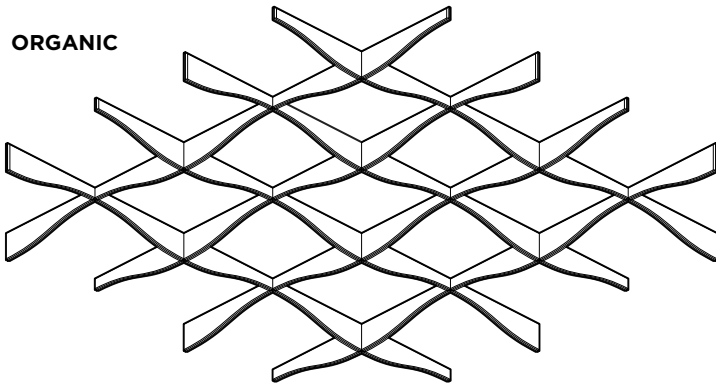
Join the fight against ho-hum and humming. The Switchblade ceiling system attaches to a tee grid with magnets, leaving existing ACT tiles untouched. The baffles mix and match, so it's easy to switch up styles, switch up colors and switch up your ceiling.

DESIGN SYSTEMS

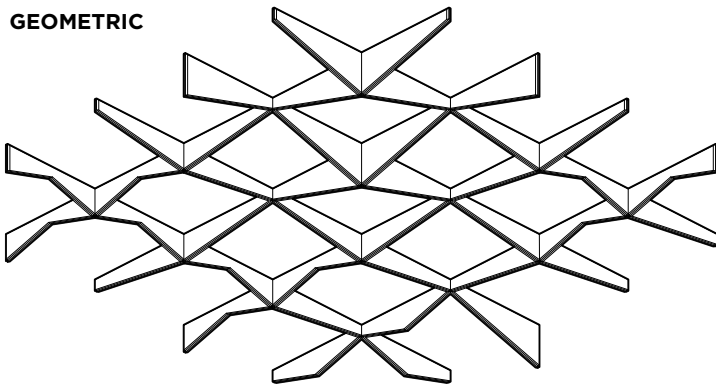
CLASSIC



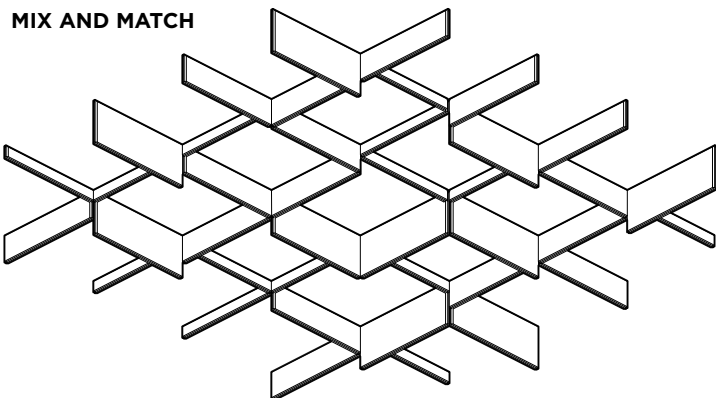
ORGANIC



GEOMETRIC



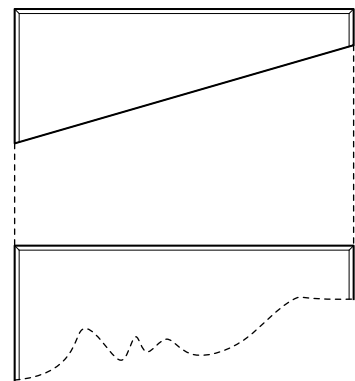
MIX AND MATCH



Switchblade comes in three design systems: Classic, Organic and Geometric.

The systems mix and match. Each system is made of individual baffle profiles that occupy a 2' section of tee grid. Since the baffles are compatible across systems, the overall design can pixelate, fade out and transition as needed for the space.

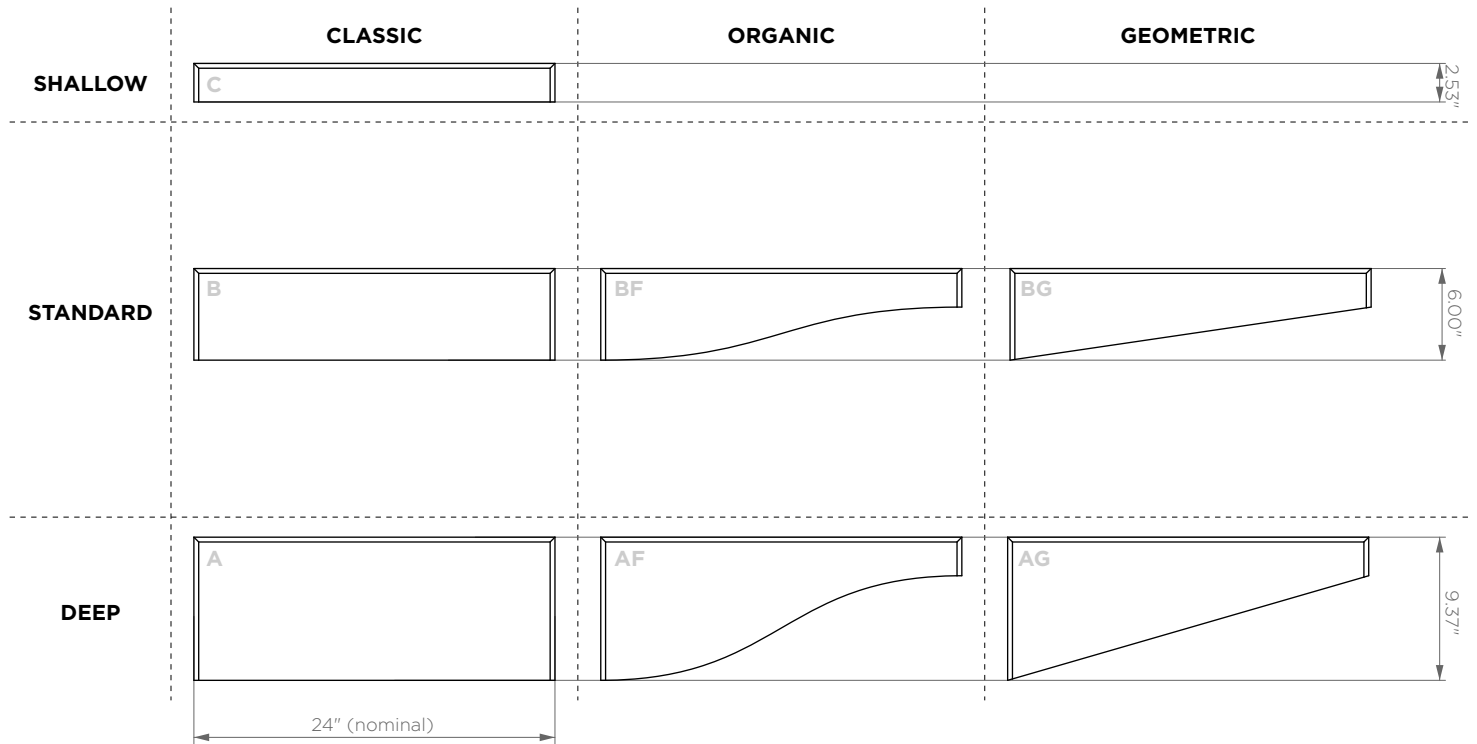
CUSTOM SYSTEMS AND PROFILES



Current baffle profiles aren't cutting it? TURF can customize them to meet the needs of a project. Contact your rep to get started.

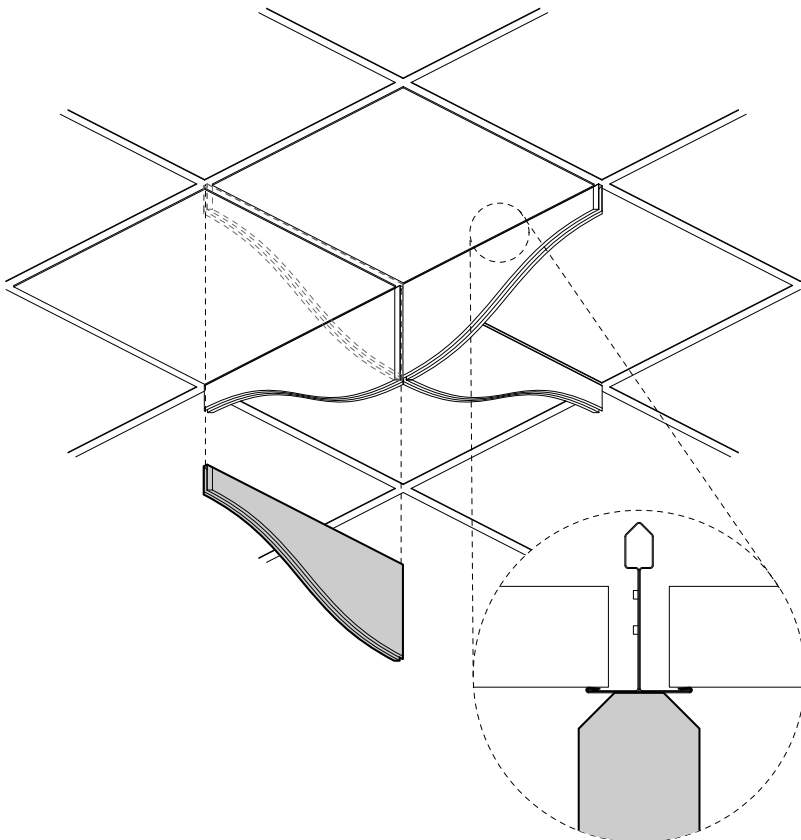
COMPONENTS + INSTALLATION

SYSTEM COMPONENTS AND SIZING



Switchblade baffles come in three sizing categories (Shallow, Standard and Deep) across three design systems (Classic, Organic and Geometric).

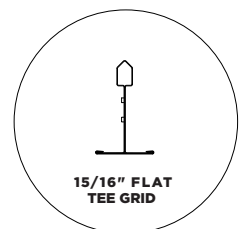
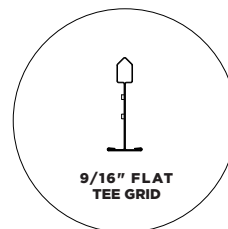
INSTALLATION TO 2' x 2' TEE GRID



Embedded magnets make the installation of Switchblade quick and easy.

The baffles snap to the exposed face of tee grid. They can be adjusted by either removing and reinstalling them or by sliding them along the grid.

Switchblade is compatible with 2' x 2' tee grid with a flat 9/16" or 15/16" cross section. For a solid connection, the grid must have an exposed flat face and be made of steel or another ferrous metal.

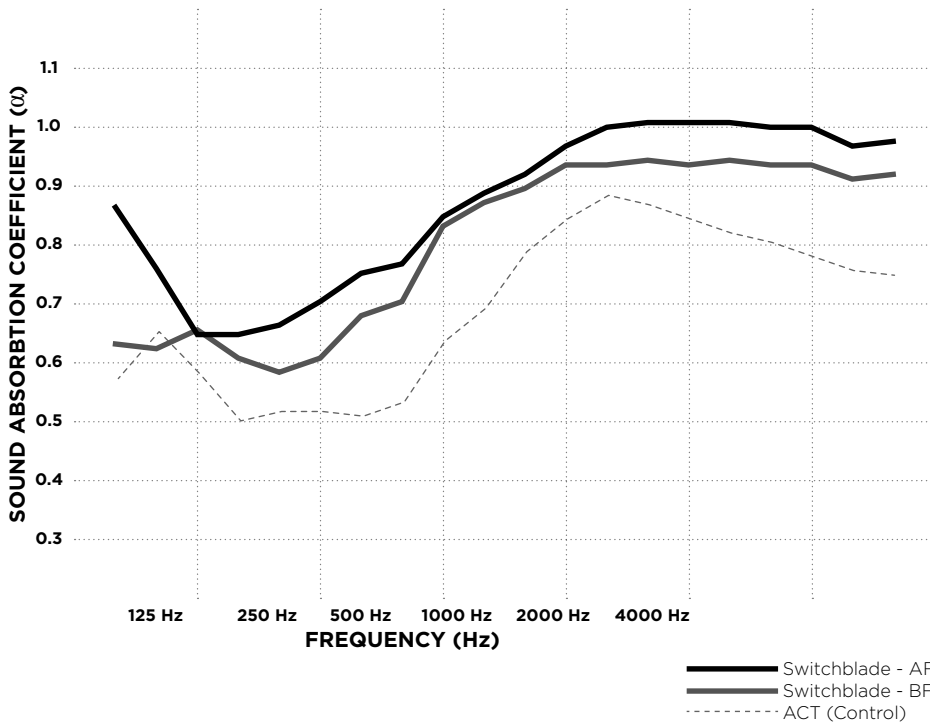


MATERIAL SPECIFICATIONS + TECHNICAL DATA

PRODUCT NAME	Switchblade (patent pending)
CONTENT	9 mm PET, up to 60% recycled content
SIZE RANGE	24" (nominal) Length x Varying Height x 27 mm
INSTALLATION HARDWARE	Two magnetic connections. For use on steel tee grid systems only, see installation notes for compatible types.
WARRANTY	Three years
MAINTENANCE	Vacuum occasionally to remove any particulate matter and air-borne debris or dust. Compressed air can be used to dust the material in difficult to reach areas for large assemblies. Contact TURF for additional details.
LEAD TIME	Ships four (4) weeks from signed approval
VOC	ASTM D 5116 Compliant
FIRE RATING	Product made from Class A PET felt material tested under ASTM E-84.
ACOUSTICS	ASTM C423-17: NRC = 0.85 (Switchblade AF Baffle Type Configuration) Type E-400 Mounting: 400 mm from panel surface to test surface to resemble suspended grid ceiling.



ASTM C 423-17 (Product)



Hz	ACT (CONTROL) α	AF MODULES α	BF MODULES α
80 Hz	.47	.83	.54
100 Hz	.57	.70	.53
125 Hz	.48	.56	.57
250 Hz	.40	.63	.79
500 Hz	.55	.81	.92
1000 Hz	.81	.96	.92
2000 Hz	.81	1.01	.92
4000 Hz	.73	1.00	.92
5000 Hz	.70	.96	.89
SAA	.64	.85	.78
NRC	.65	.85	.80

9MM FELT

TURF's Switchblade Baffles are made with 9mm PET felt board.

The process used to create PET felt often results in a heathered effect where multiple tones are present. Slight variations in color should be expected when using this sustainable material.

Felt thickness is 9mm +/- 0.5 mm.

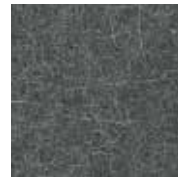
Monitors and printers vary. Please request a material sample to verify felt colors.



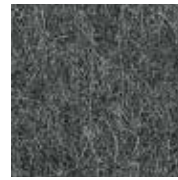
07 BLACK



06 CHARCOAL



38 MATTE GREY



86 SLATE



98 STORM



01 CREAM



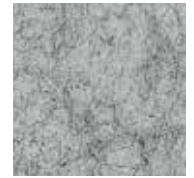
50 IVORY



05 WHITE



66 PEWTER



04 LIGHT GREY



78 WHEAT



82 BARLEY



54 LATTE



48 LIGHT BROWN



32 BROWN



94 CORAL



42 ORANGE



16 RED



58 RASPBERRY



39 LAVENDER



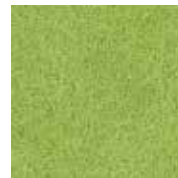
20 MANGO



62 SUNFLOWER



45 YELLOW



47 LIME



14 GREEN



70 AQUA



90 SKY



25 LIGHT BLUE



74 DENIM



29 DARK BLUE