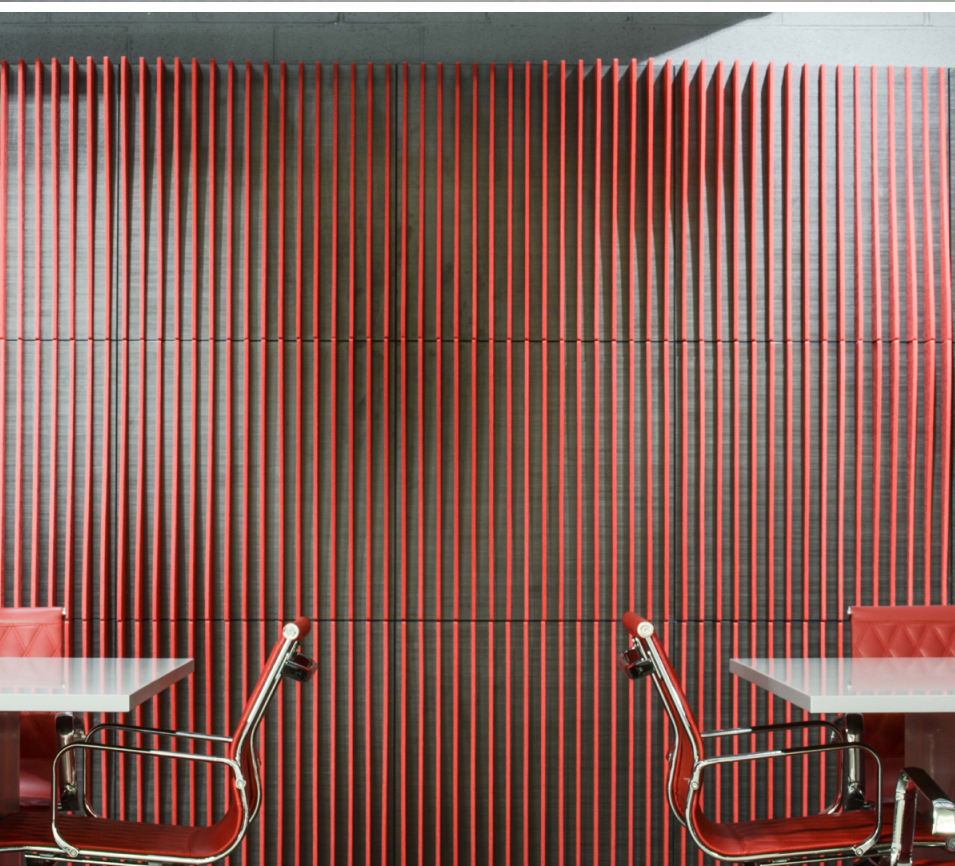


Torrent Tile

by

T U R F



Torrent Tile

MODULAR & CUSTOM

The Torrent Tile is a modular acoustic tiling system that can be easily configured to create seemingly endless "custom" wall sculptures. With only three modular Torrent Tiles, endless varieties of undulations, ebbs and flows, and transitions can be created within any interior environment.

Assembly

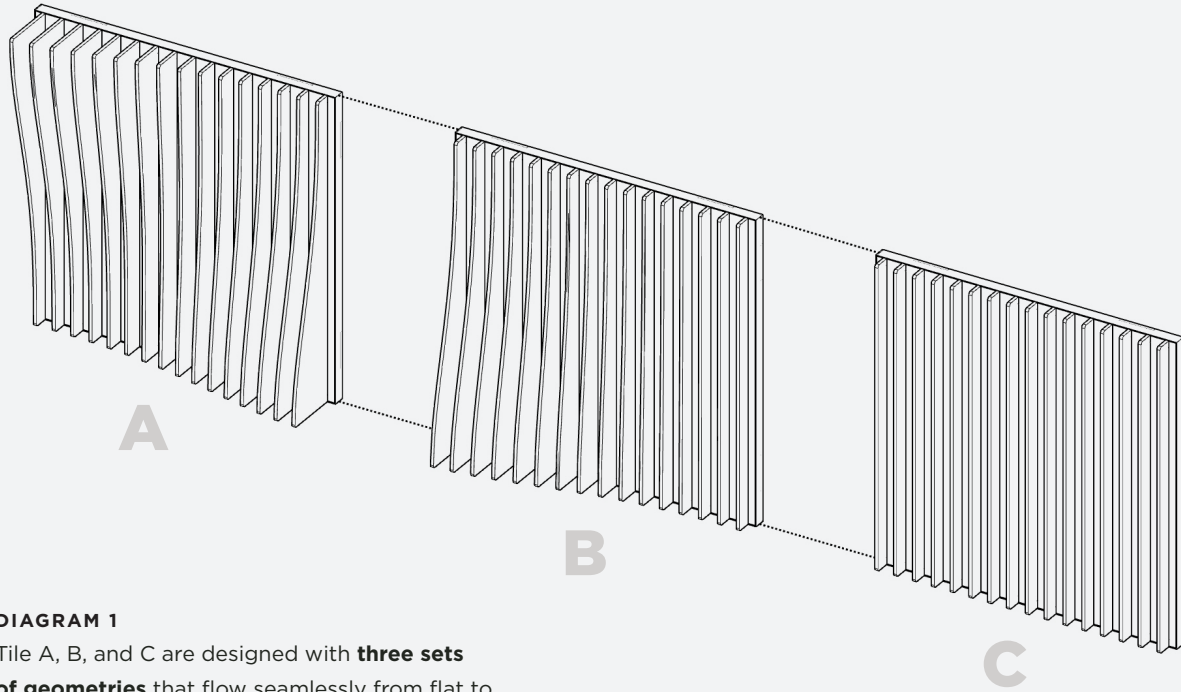
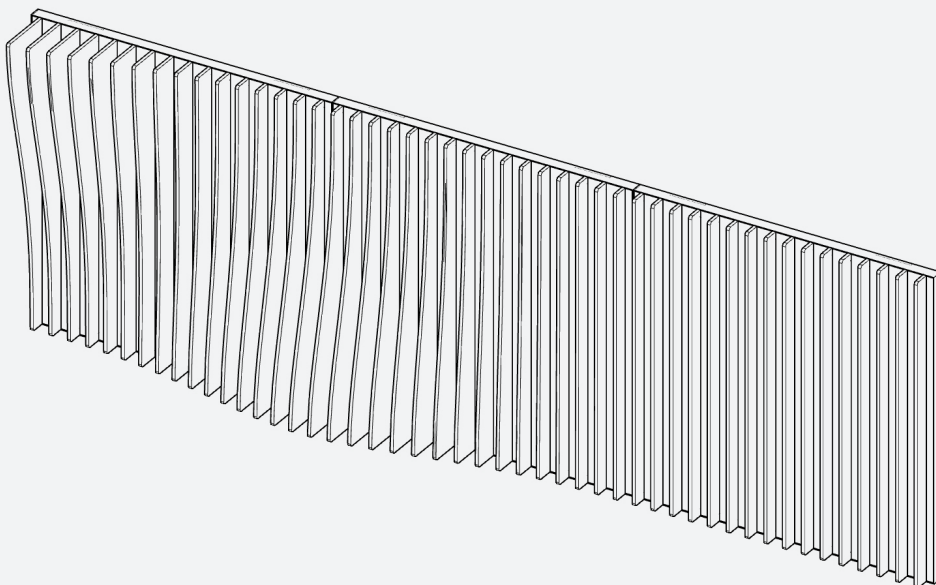


DIAGRAM 1

Tile A, B, and C are designed with **three sets of geometries** that flow seamlessly from flat to undulation when joined together.

DIAGRAM 2

The vertical slats create acoustic geometries that allow sound to enter, bounce around, and become absorbed.



Assembly

DIAGRAM 3

Torrent Tiles are designed so that their vertical slats can be reconfigured from **Right-to-Left** to **Left-to-Right**. This allows the undulation to continue horizontally and vertically by simply mirroring the tiles.

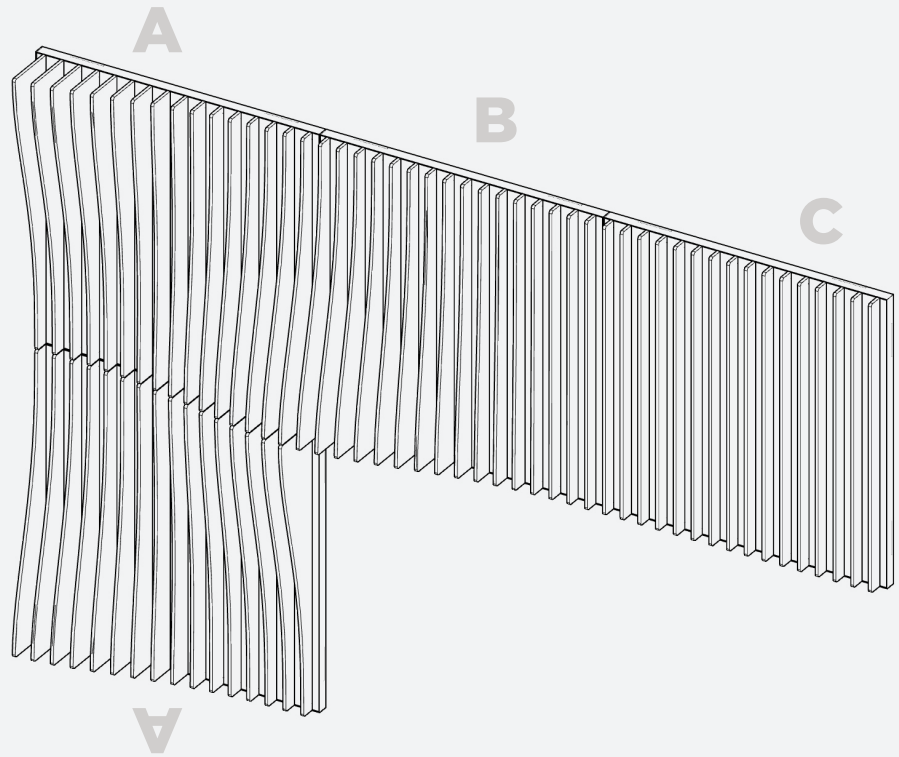
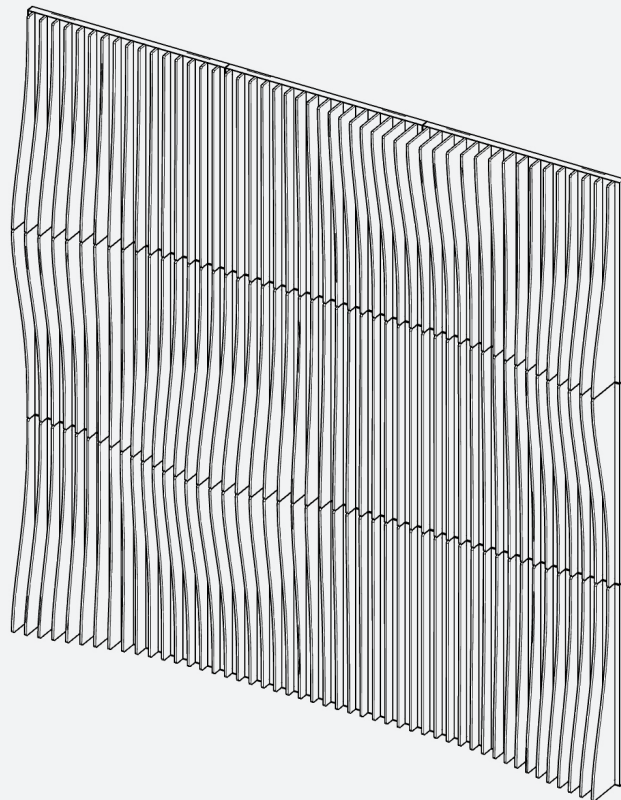


DIAGRAM 4

As the Torrent Tile process is repeated, an entire wall can be filled with a custom undulating form.

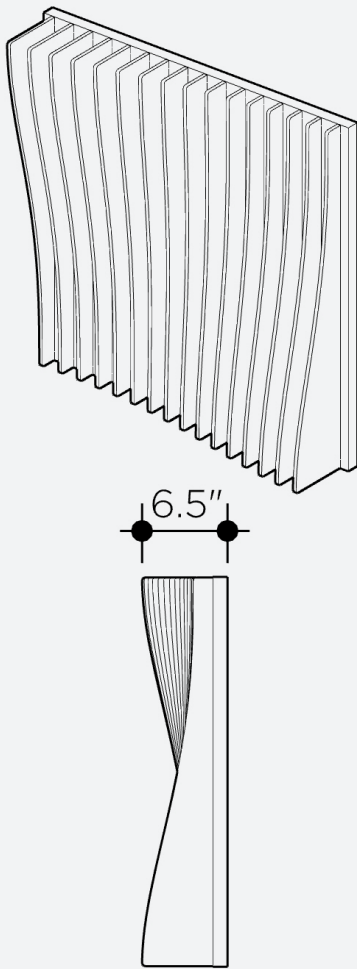


Tile A

1

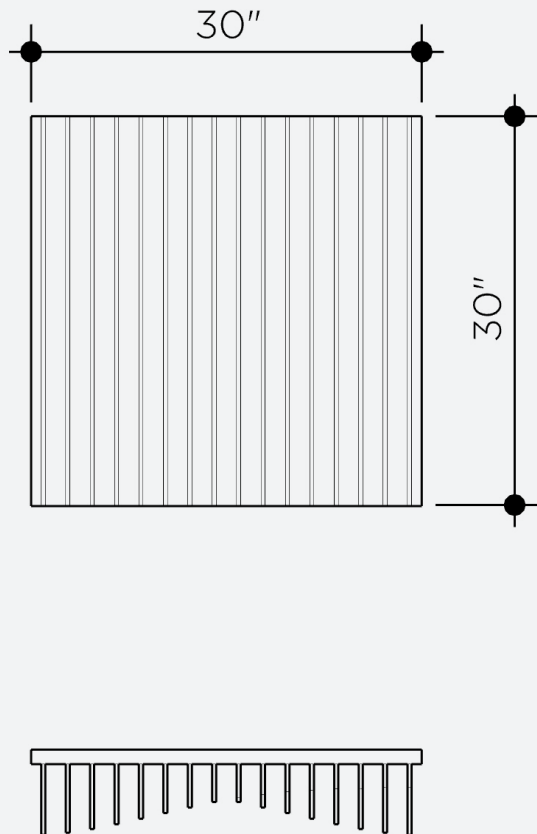
PERSPECTIVE DETAIL

Tile A is designed with an undulation in each corner which crates a sinuous undulating geometry when repeated.



2

FRONT ELEVATION DETAIL



3

SIDE ELEVATION DETAIL

Tile A **extends 6.5" from the wall**, allowing the felt material to be extremely rigid and strong enough to withstand being leaned on by users.

4

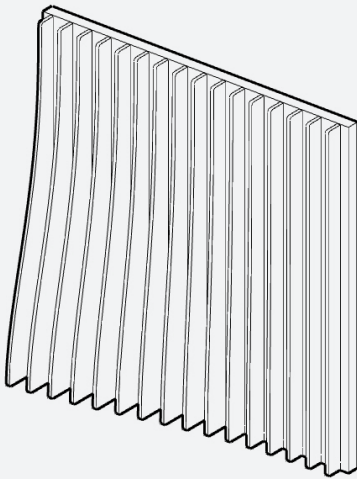
TOP VIEW DETAIL

Tile B

1

PERSPECTIVE DETAIL

Tile B is designed with an undulation in one corner and flat in the other, so that the designer can transition from Tile A to tile C. Tile B is the connecting tile that transitions from undulation to flat.



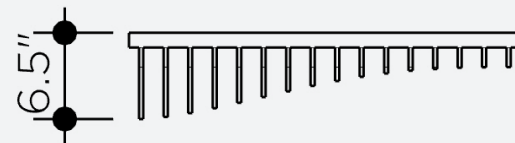
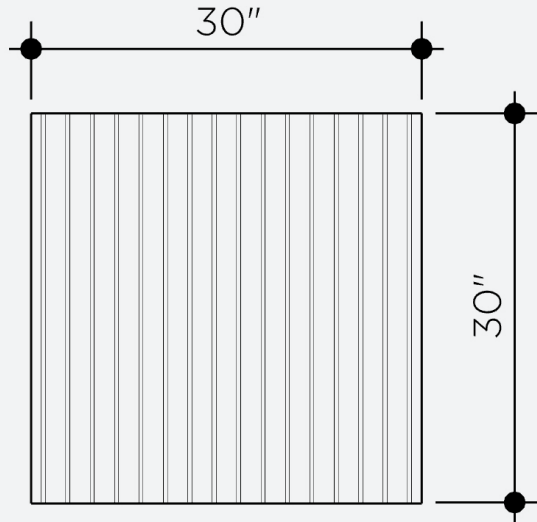
3

SIDE ELEVATION DETAIL

Tile B **extends 6.5" from the wall**, allowing the felt material to be extremely rigid and strong enough to withstand being leaned on by users.

2

FRONT ELEVATION DETAIL



4

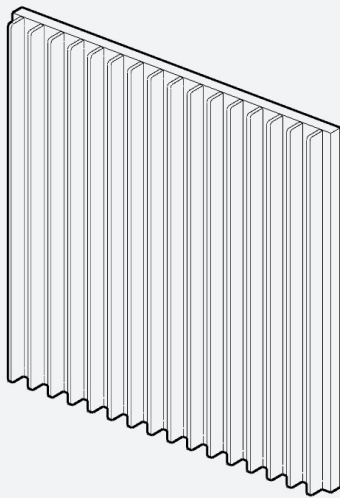
TOP VIEW DETAIL

Tile C

1

PERSPECTIVE DETAIL

Tile B is designed with an undulation in one corner and flat in the other, so that the designer can transition from Tile A to tile C. Tile B is the connecting tile that transitions from undulation to flat.



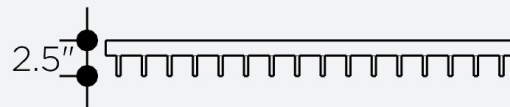
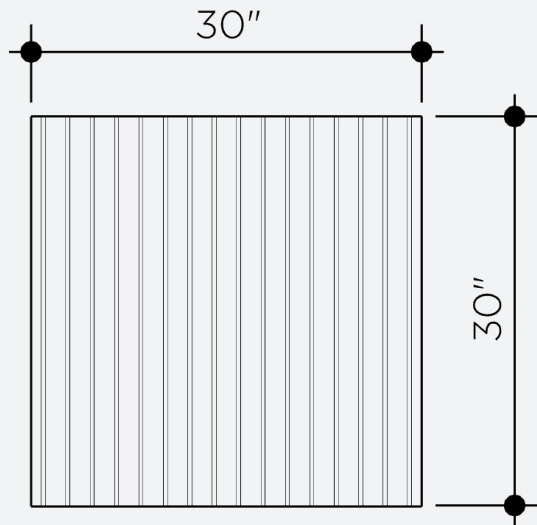
3

SIDE ELEVATION DETAIL

Tile C **extends 6.5" from the wall**, allowing the felt material to be extremely rigid and strong enough to withstand being leaned on by users.

2

FRONT ELEVATION DETAIL



4

TOP VIEW DETAIL

Specifications

PRODUCT NAME	Torrent Tile (patent pending)
CONTENT	Up to 60% Recycled Polyester Felt
FELT THICKNESS	9mm
PANEL THICKNESS	1.125"
STANDARD SIZE	30" X 30"
MAXIMUM SIZE	30" X 30"
EDGE OPTIONS	Exposed Felt with Felt Substrate
COMPONENTS	N/A
DURABILITY	Contract
MAINTENANCE	Vacuum occasionally to remove any particulate matter and air-borne debris or dust. Compressed air can be used to dust the material in difficult to reach areas or for large assemblies.
LEAD TIME	Shipped in 4 weeks.
ENVIRONMENTAL	9mm PET felt board is made from over 60% recycled polyester plastic, declare red list free. TURF is pursuing product transparency for LEED V4 MR Credit 4 Option 1, and MR Credit 3 Option 2 for recycled content. Declare Red List Free product.
VARIATION	PET Felt uses a traditional 'felting' process to create it's panels. This often results in a pleasing heathered effect, where multiple tones are present in the fiber. Slight and consistent variations in color should be expected when using this sustainable material.
ACOUSTICS	ASTM C 423: NRC [500hz] = .76 NRC [1000hz] = 1.00
FIRE RATING	FELT is UL Tested ASTM E-84: Class A

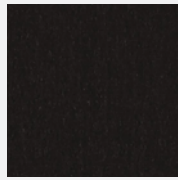
9MM FELT

TURF's Torrent carved wall tile is made with 9mm PET felt board.

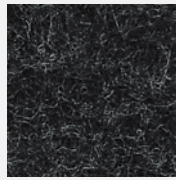
The process used to create PET felt often results in a heathered effect where multiple tones are present. Slight variations in color should be expected when using this sustainable material.

Felt thickness is 9mm +/- 0.5 mm.

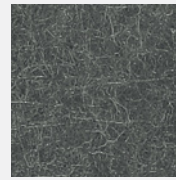
Monitors and printers vary. Please request a material sample to verify felt colors.



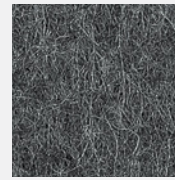
07 BLACK



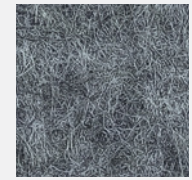
06 CHARCOAL



38 MATTE GREY



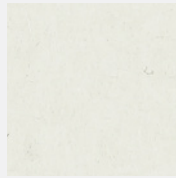
86 SLATE



98 STORM



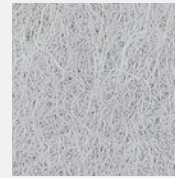
01 CREAM



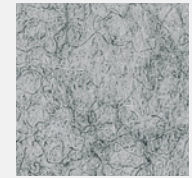
50 IVORY



05 WHITE



66 PEWTER



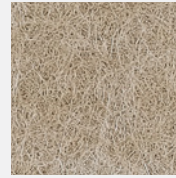
04 LIGHT GREY



78 WHEAT



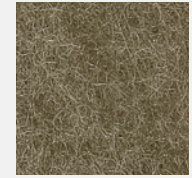
82 BARLEY



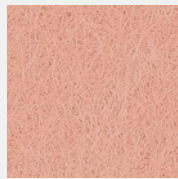
54 LATTE



48 LIGHT BROWN



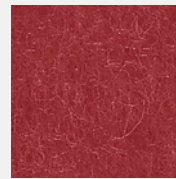
32 BROWN



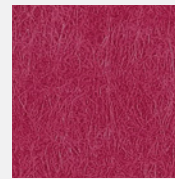
94 CORAL



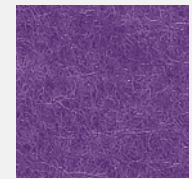
42 ORANGE



16 RED



58 RASPBERRY



39 LAVENDER



20 MANGO



62 SUNFLOWER



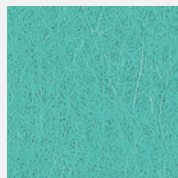
45 YELLOW



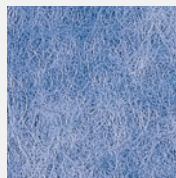
47 LIME



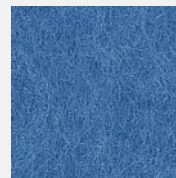
14 GREEN



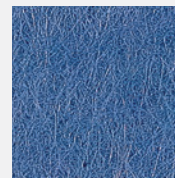
70 AQUA



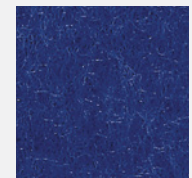
90 SKY



25 LIGHT BLUE



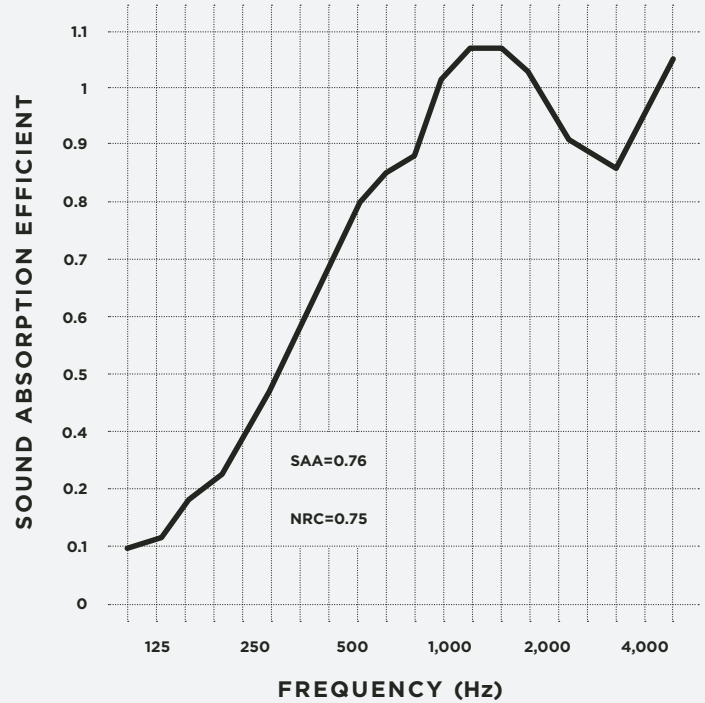
74 DENIM



29 DARK BLUE

Acoustic Testing (ASTM C 423)

FREQUENCY (Hz)	SOUND ABSORPTION COEFFICIENT
32	.03
40	.01
50	-.02
63	-.07
80	.06
100	.09
125	.12
160	.20
200	.24
250	.33
315	.45
400	.59
500	.76
630	.85
800	.89
1,000	1.00
1,250	1.06
1,600	1.06
2,000	.99
2,500	.89
3,150	.83
4,000	.94
5,000	1.04
6,300	1.00
8,000	1.05
10,000	1.07
12,500	1.07



TEST ARRANGEMENT

PET Acoustic panel +100mm air layer (Filled with 50mm rock wool board).

