



Warp Baffle

by

T U R F

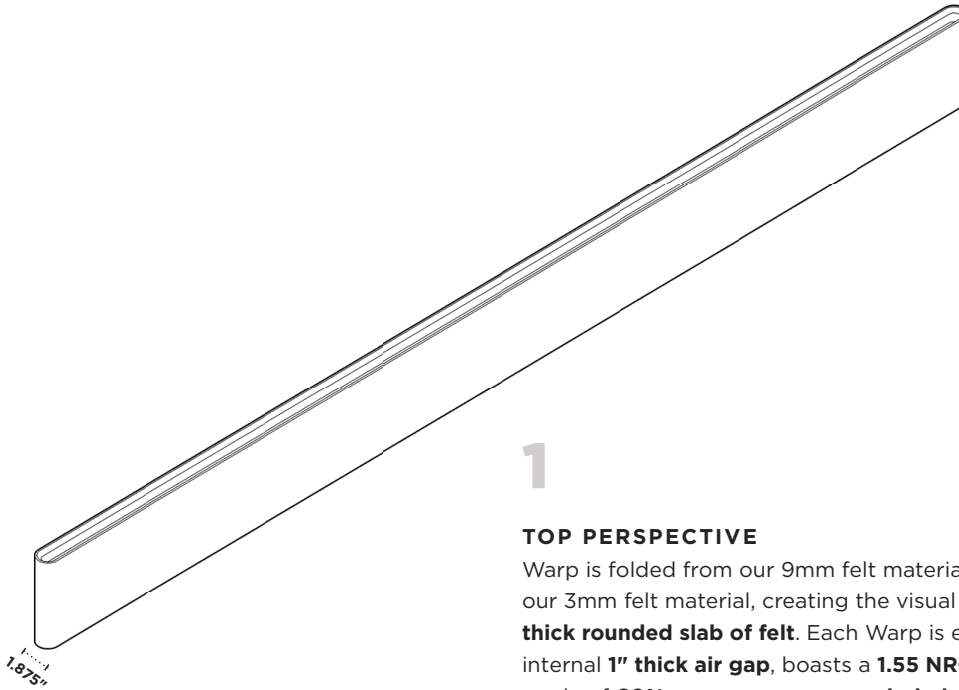


Warp Baffle

LINEAR & DYNAMIC

Warp employs the aesthetic of warp speed induced star streaks. Minimal, visually active, and sophisticated, Warp both encourages movement and absorbs the excessive noise generated by it.

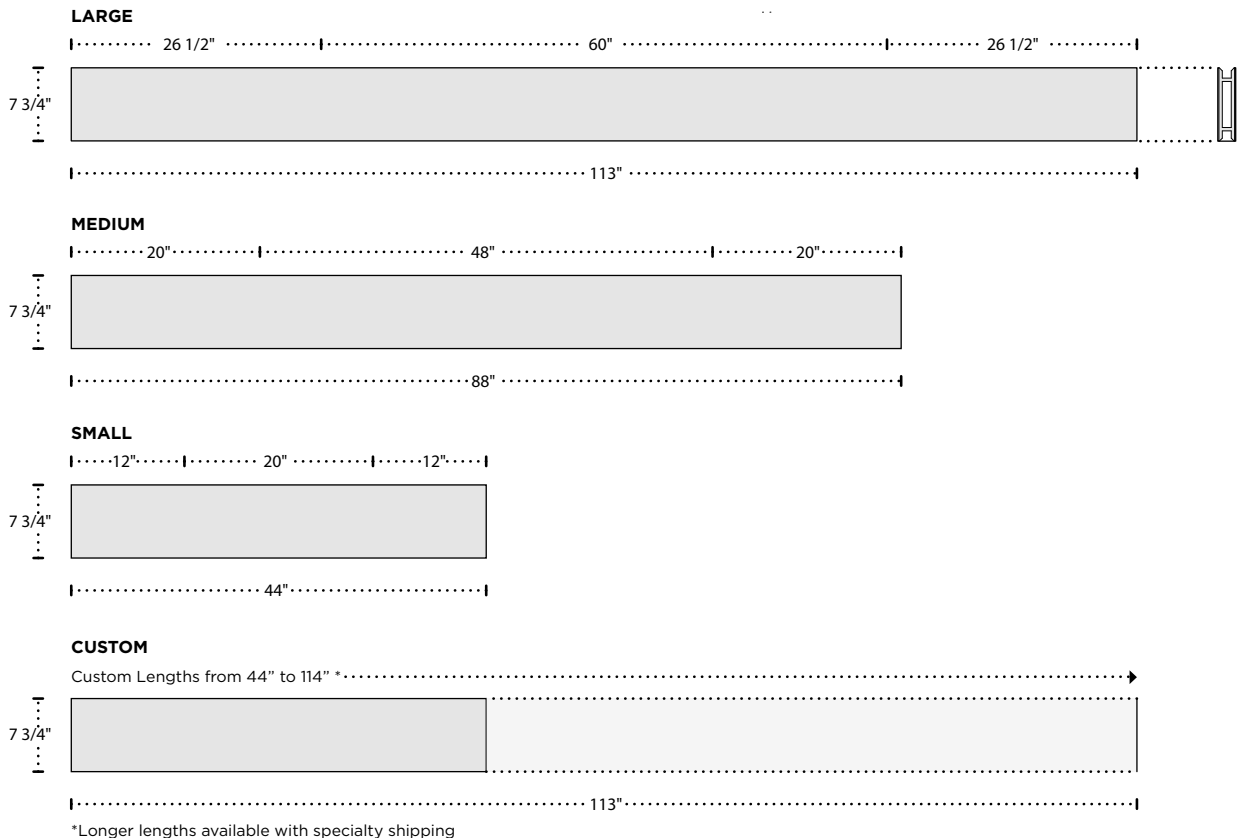
Baffle Sizes



1

TOP PERSPECTIVE

Warp is folded from our 9mm felt material and wrapped in our 3mm felt material, creating the visual effect of a **1.875" thick rounded slab of felt**. Each Warp is equipped with an internal **1" thick air gap**, boasts a **1.55 NRC rating**, and is made of **60% pre-consumer recycled plastic**.

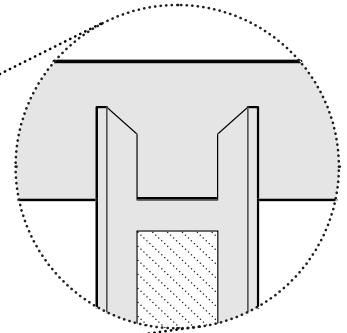
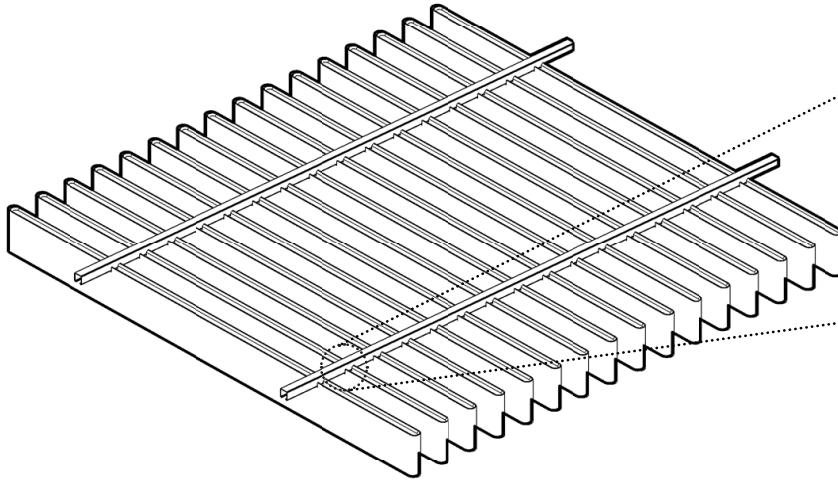


2

FRONT ELEVATION

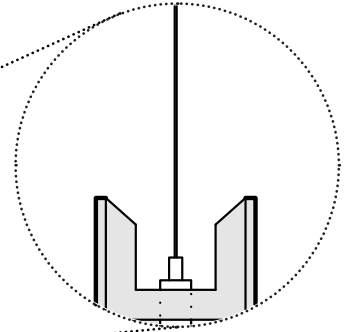
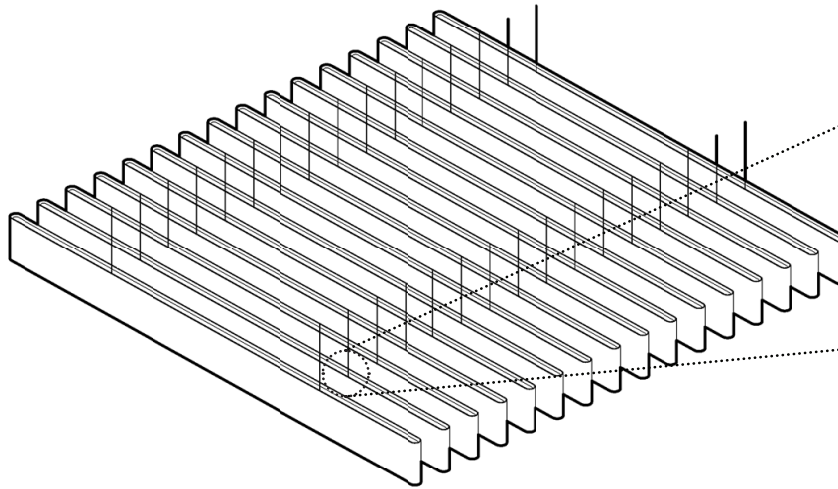
In addition to custom lengths up to 113", Warp also comes in three standard sizes, making this product incredibly flexible.

Connection Types



FELT LOCK

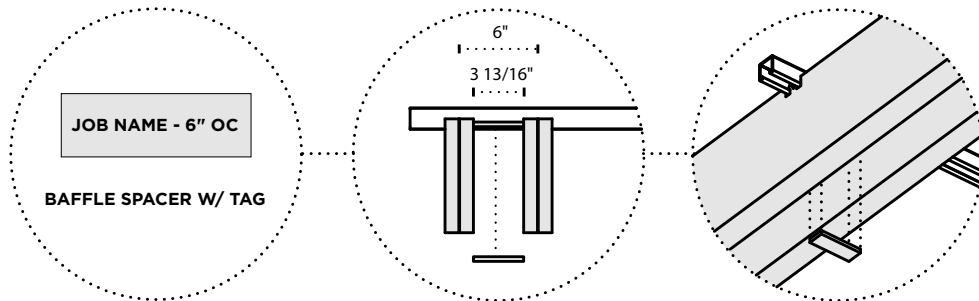
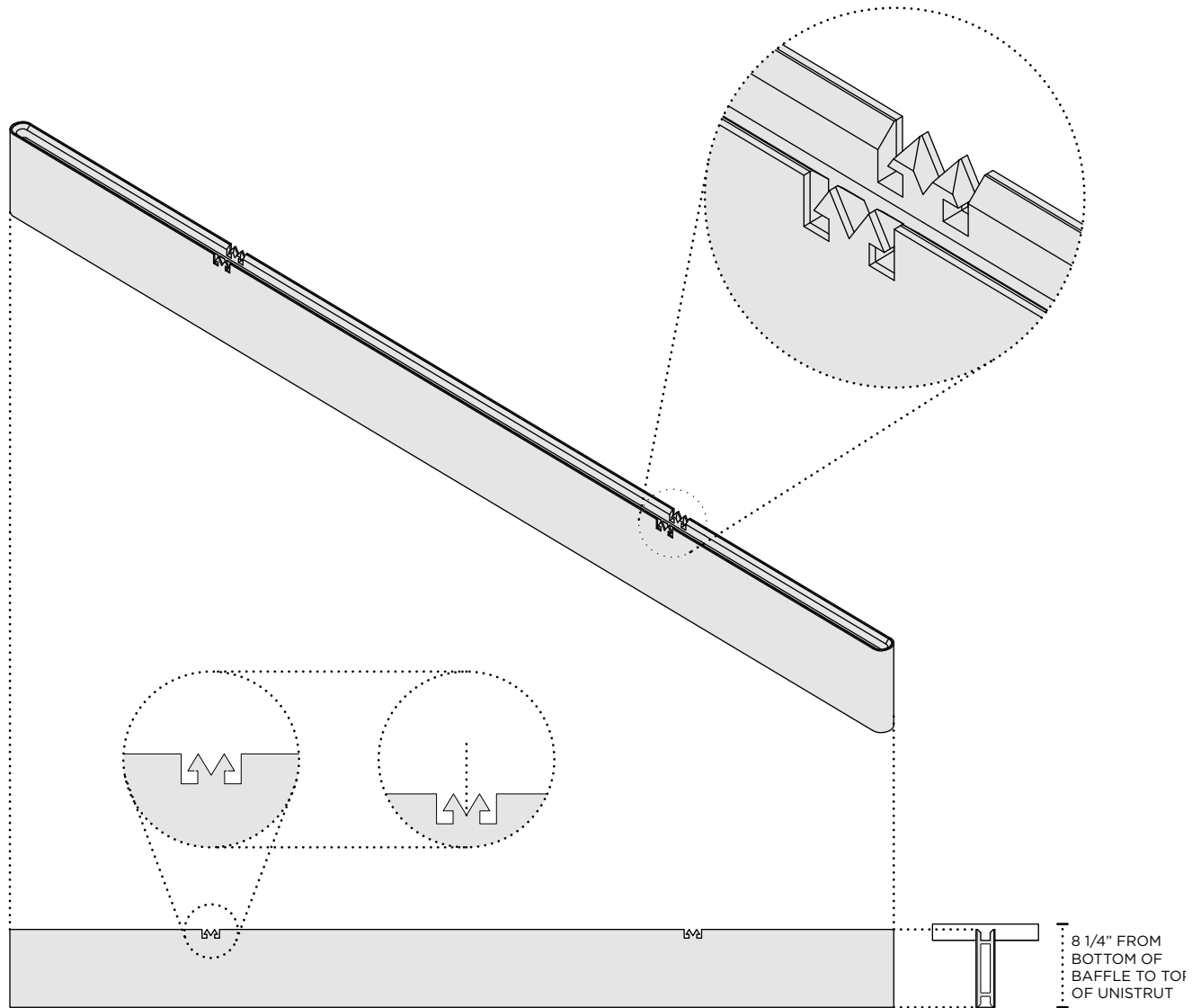
The baffles are — **in seconds** — snapped into place in standard lengths of **unistrut** — the industry's most universal installation hardware.



CABLE SUSPENSION

The baffles have embedded cable grippers, enabling them to snap - **in seconds** - into deck mounted **aircraft cables**.

Felt Lock



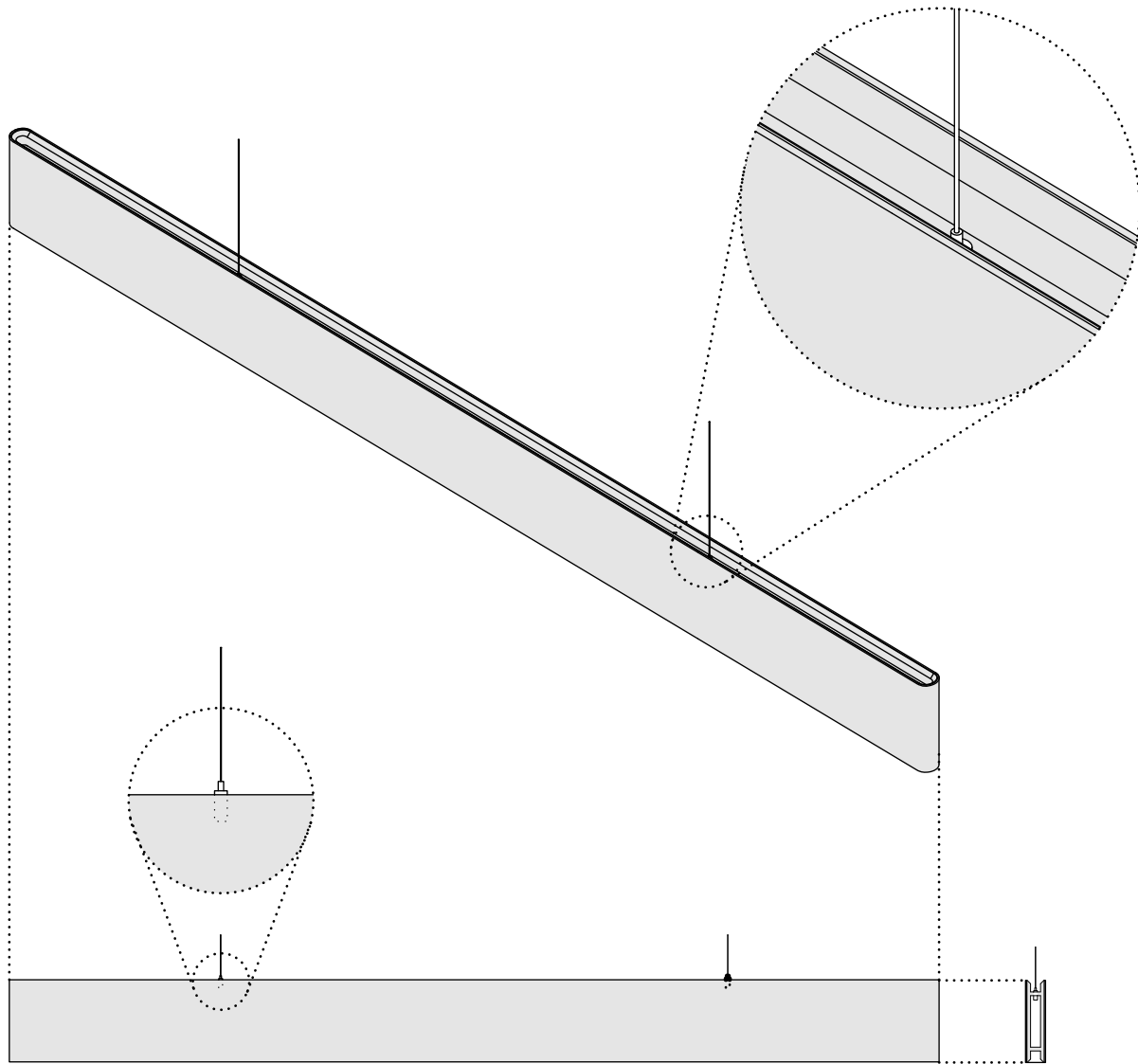
1

*Spacing dependent on project

BAFFLE ASSEMBLY

The baffles are — **in seconds** — snapped into place in standard lengths of **unistrut**—the industry's most universal installation hardware. Evenly spaced with 9mm strips of felt that slide into the unistrut channel in between baffles.

Cable Suspension



2

BAFFLE ASSEMBLY

Attached directly to the deck, air craft cables can be arranged in any desired pattern. The baffles have embedded cable grippers, enabling them to snap - **in seconds** - into the deck mounted cables.

Specifications

PRODUCT NAME	Warp Baffle
CONTENT	Up to 60% Pre-Consumer Recycled Content Polyester Felt
FELT THICKNESS	9mm + 3mm
PANEL THICKNESS	1.875"
SMALL	44" x 7.75" x 1.875"
MEDIUM	88" x 7.75" x 1.875"
LARGE	113" x 7.75" x 1.875"
EDGE OPTIONS	Exposed Felt
COMPONENTS	Standard P1000T unistrut, aircraft cables, Standard Tee Grid, or Steel Truss Joists
DURABILITY	Contract
MAINTENANCE	Vacuum occasionally to remove any particulate matter and air-borne debris or dust. Compressed air can be used to dust the material in difficult to reach areas for large assemblies.
LEAD TIME	Shipped in 4 weeks.
ENVIRONMENTAL	9mm PET felt board is made from up to 99% recycled polyester plastic, over 50% of which come from recycled water bottles. TURF has a Declare Label for this product. TURF is pursuing product transparency for LEED V4 MR Credit 4 Option 1, and MR Credit 3 Option 2 for recycled content.
VARIATION	PET Felt uses a traditional 'felting' process to create its panels. This often results in a pleasing heathered effect, where multiple tones are present in the fiber. Slight and consistent variations in color should be expected when using this sustainable material.
ACOUSTICS	ASTM C423-17: NRC = 0.75 (Material)
VOC	ASTM D 5116 Compliant
FIRE RATING	Product made from Class A PET felt material tested under ASTM E-84.

9MM FELT

TURF's Warp ceiling baffle is made with 9mm PET felt board.

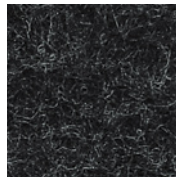
The process used to create PET felt often results in a heathered effect where multiple tones are present. Slight variations in color should be expected when using this sustainable material.

Felt thickness is 9mm +/- 0.5 mm.

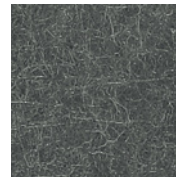
Monitors and printers vary. Please request a material sample to verify felt colors.



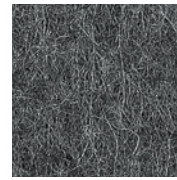
07 BLACK



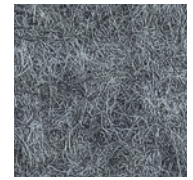
06 CHARCOAL



38 MATTE GREY



86 SLATE



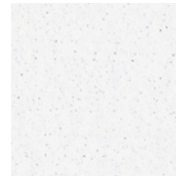
98 STORM



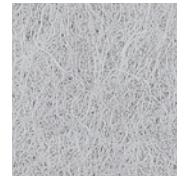
01 CREAM



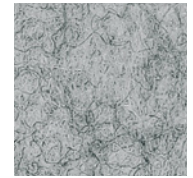
50 IVORY



05 WHITE



66 PEWTER



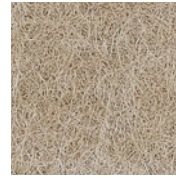
04 LIGHT GREY



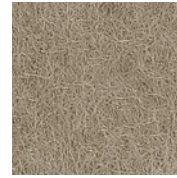
78 WHEAT



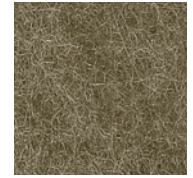
82 BARLEY



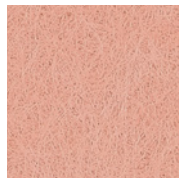
54 LATTE



48 LIGHT BROWN



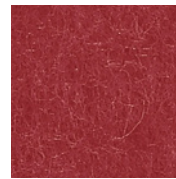
32 BROWN



94 CORAL



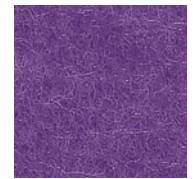
42 ORANGE



16 RED



58 RASPBERRY



39 LAVENDER



20 MANGO



62 SUNFLOWER



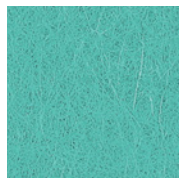
45 YELLOW



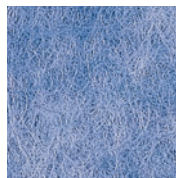
47 LIME



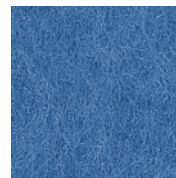
14 GREEN



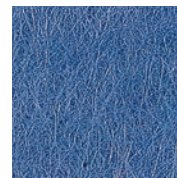
70 AQUA



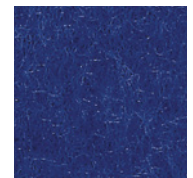
90 SKY



25 LIGHT BLUE



74 DENIM



29 DARK BLUE

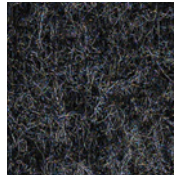
3MM FELT

In addition to the 9mm boards we can also integrate 3mm PET fabric into the products through lamination. The layered material enhances not only the acoustic performance, but allows for color combinations and color reveals.

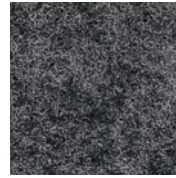
Monitors and printers vary. Please request a material sample to verify felt colors.



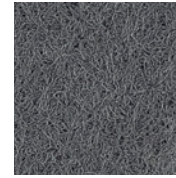
R11 BLACK



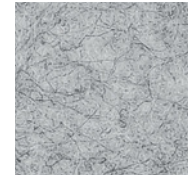
R28 MIDNIGHT



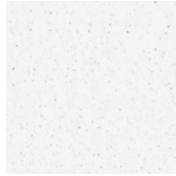
R02 DARK GREY



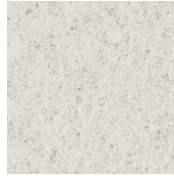
R25 FLINT



R03 LIGHT GREY



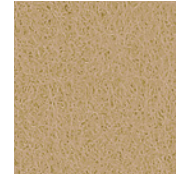
R01 WHITE



R09 BISQUE



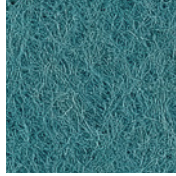
R13 PARCHMENT



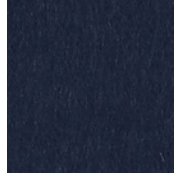
R20 TAN



R07 MARIGOLD



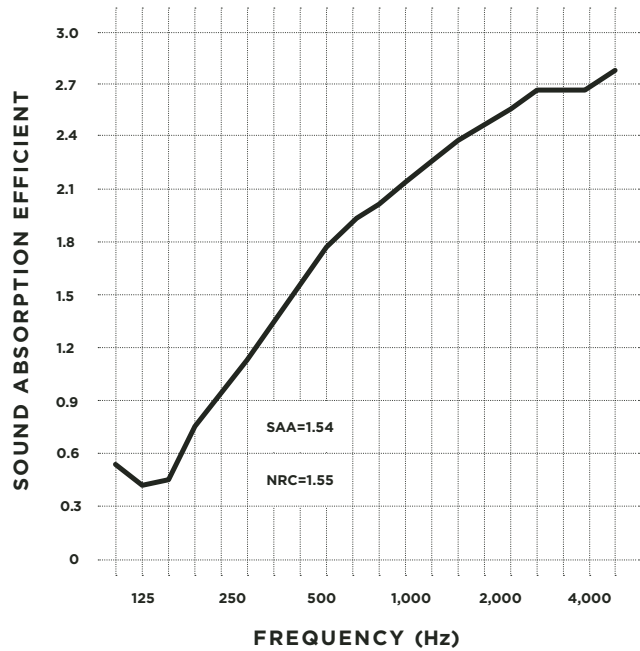
R22 TEAL



R19 BLUE

Acoustic Testing (ASTM C 423-17)

FREQUENCY (Hz)	SOUND ABSORPTION COEFFICIENT
32	.04
40	-.01
50	-.13
63	.49
80	.43
100	.30
125	.21
160	.22
200	.42
250	.57
315	.78
400	.98
500	1.22
630	1.42
800	1.63
1,000	1.88
1,250	2.15
1,600	2.32
2,000	2.48
2,500	2.58
3,150	2.56
4,000	2.56
5,000	2.64
6,300	2.61
8,000	2.63
10,000	2.60
12,500	2.41



TEST ARRANGEMENT

Type J Mounting: The specimen is an array of spaced sound absorbing baffles suspended from a cable approximately 1206.5mm (47.5 in.) above the horizontal test surface. This approximates the mounting method of a typical ceiling baffle installation. The baffles were evenly distributed in four rows four units each. Baffles were spaced 305 mm (12 in.) apart. Rows were spaced 762mm (30 in.) apart.

Declare.

TURF 9mm PET Acoustic Panel
Turf Design

Final Assembly: Elgin, Illinois, USA
Life Expectancy: 50 Years
End of Life Options: Salvageable/Reusable in its Entirety, Recyclable (100%)

Ingredients:
Polyethylene Terephthalate; PET; Antioxidant 1076; Benzenamine, 4-(1-Methyl-1-Phenylethyl)-N-[4-(1-Methyl-1-Phenylethyl)Phenyl]-, Benzenepropanoic Acid, 3,5-Bis(1,1-Dimethylethyl)-4-Hydroxy-, Octadecyl Ester, Octadecanamide, N,N'-1,2-Ethanediybis-, Stearic Acid, Titanium Dioxide

Living Building Challenge Criteria:

TFD-0002	EXP 01 DEC 2020
VOC Content: N/A	VOC Emissions: CDPH Compliant
Declaration Status	<input checked="" type="checkbox"/> LBC Red List Free
	<input type="checkbox"/> LBC Compliant
	<input type="checkbox"/> Declared

MANUFACTURER RESPONSIBLE FOR LABEL ACCURACY
INTERNATIONAL LIVING FUTURE INSTITUTE™ declareproducts.com