

SCANLINES

wall panel

A Sound Vision.

Enhance your image with TURF's groundbreaking and patent-pending Scanlines, the acoustic wall panel that transforms images into sound-absorbing works of art. Using our exclusive algorithm, we translate color variation into depth and use these interpretations to cut our PET felt accordingly, rendering your image into a multidimensional masterpiece with depth-defying sound absorption.



PATENT PENDING

SPECS

PRODUCT
Scanlines

CONTENT
Polyester (PET) felt
60% pre-consumer recycled

DIMENSIONS

PANEL HEIGHT
MAX 119" H

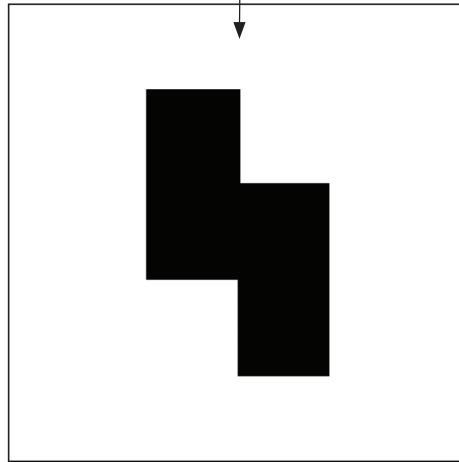
PANEL WIDTH
MAX 47.5" W

FELT THICKNESS
12 mm

CONNECTIONS

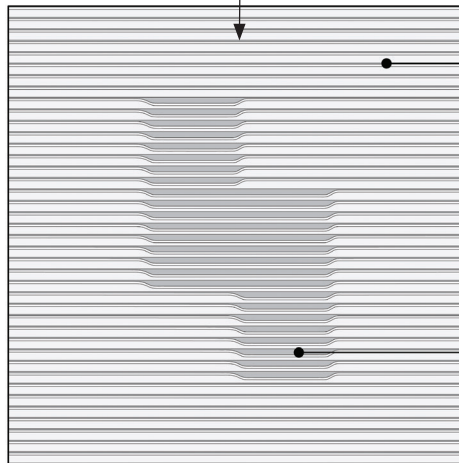
Z-CLIP
SELF ADHESIVE
CONSTRUCTION ADHESIVE

YOUR ARTWORK



Scanlines works by interpreting grayscale images pixel by pixel - this is the starting point for our algorithm.

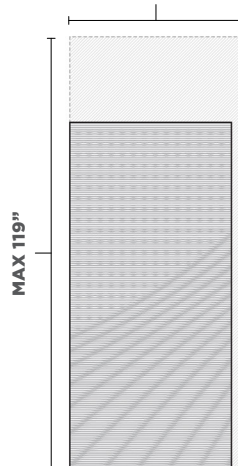
PROCESSED IMAGE



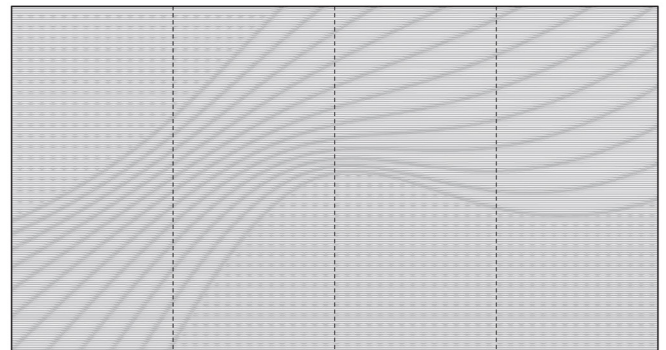
The light sections are interpreted as shallower cuts in the panel. The lighter the pixel, the less of the 9 mm material is revealed.

The dark sections are interpreted as deeper cuts in the panel. The darker the pixel, the more of the 9mm material is revealed.

MAX 47.5"

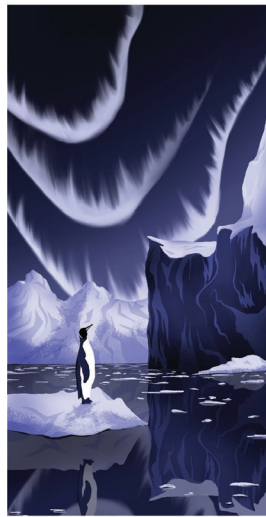


There are no limits to the number of panels used to display your artwork. We are able to control the seams with a tight butt joint to make it look like a continuous panel.



THE PROCESS

Every Scanlines project is going to be unique, so it's best to start a conversation with the Turf team to talk about the design intent.



Scanlines can start with just about any kind of image as an input, but some types of artwork are better than others for this process. Contrast, shading, and scale are all important considerations.



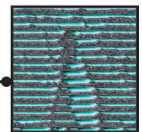
Once the artwork is selected, our first step is to convert it to a grayscale image. The light and dark areas will be interpreted as different cut depths.



The Turf team will process the image and create a simulation for your review. At this stage, you will be able to see how the cuts will be made and make adjustments to the artwork.



We'll help guide you through the process of selecting the right colors. Too much contrast can be dizzying, but not enough contrast makes the artwork hard to read.

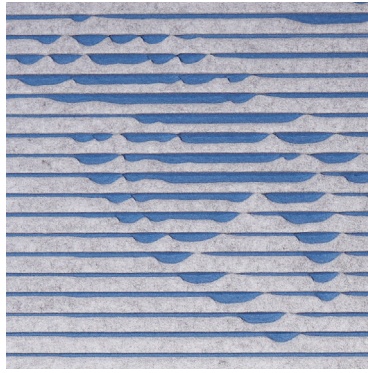


We will send you a 12"x12" sample of your color way to help make the decision.

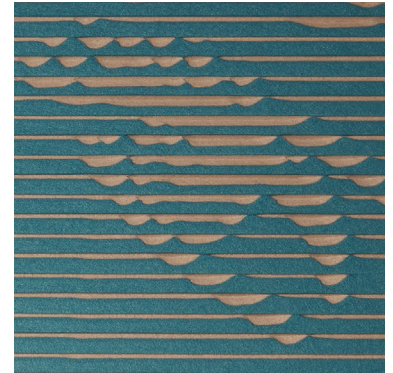
STARTING POINTS

There are a lot of colors to choose from, and it's important to be mindful of the contrast between the top and bottom layers. To help start the process, we've created several starting points. These are just a few color combinations that we've already tested and verified. There's enough contrast for readability, but it's not too much to create eye strain.

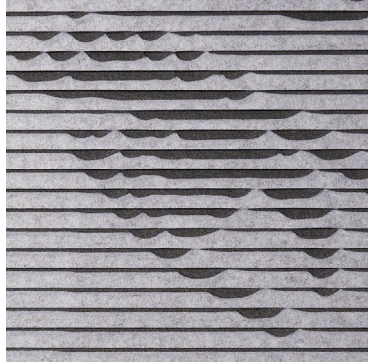
Working with the design team, we'll make sure to help guide you through the process of selecting balanced colors.



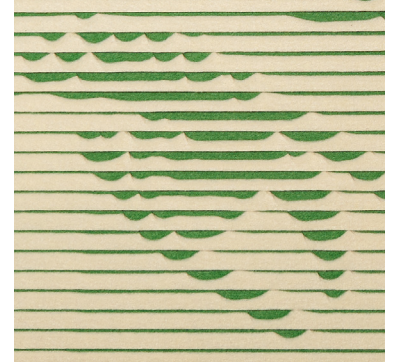
R03 LIGHT GREY
74 DENIM



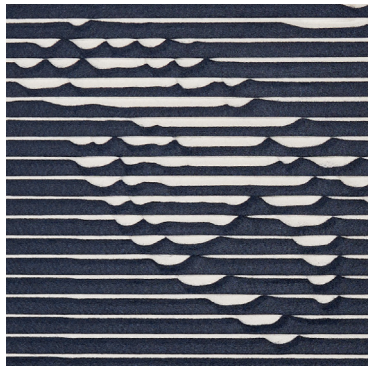
R22 TEAL
82 BARLEY



R03 LIGHT GREY
06 CHARCOAL



R13 PARCHMENT
14 GREEN



R19 BLUE
50 IVORY



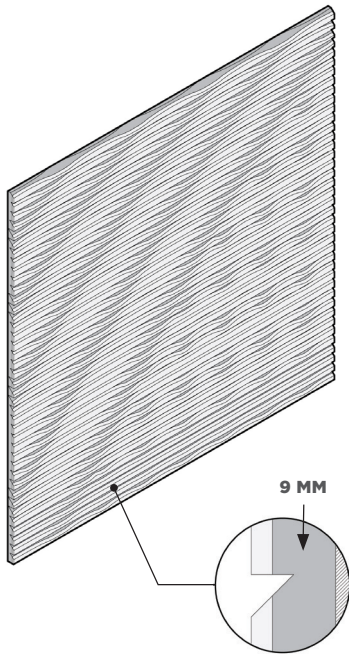
R09 BISQUE
82 BARLEY

9MM FELT

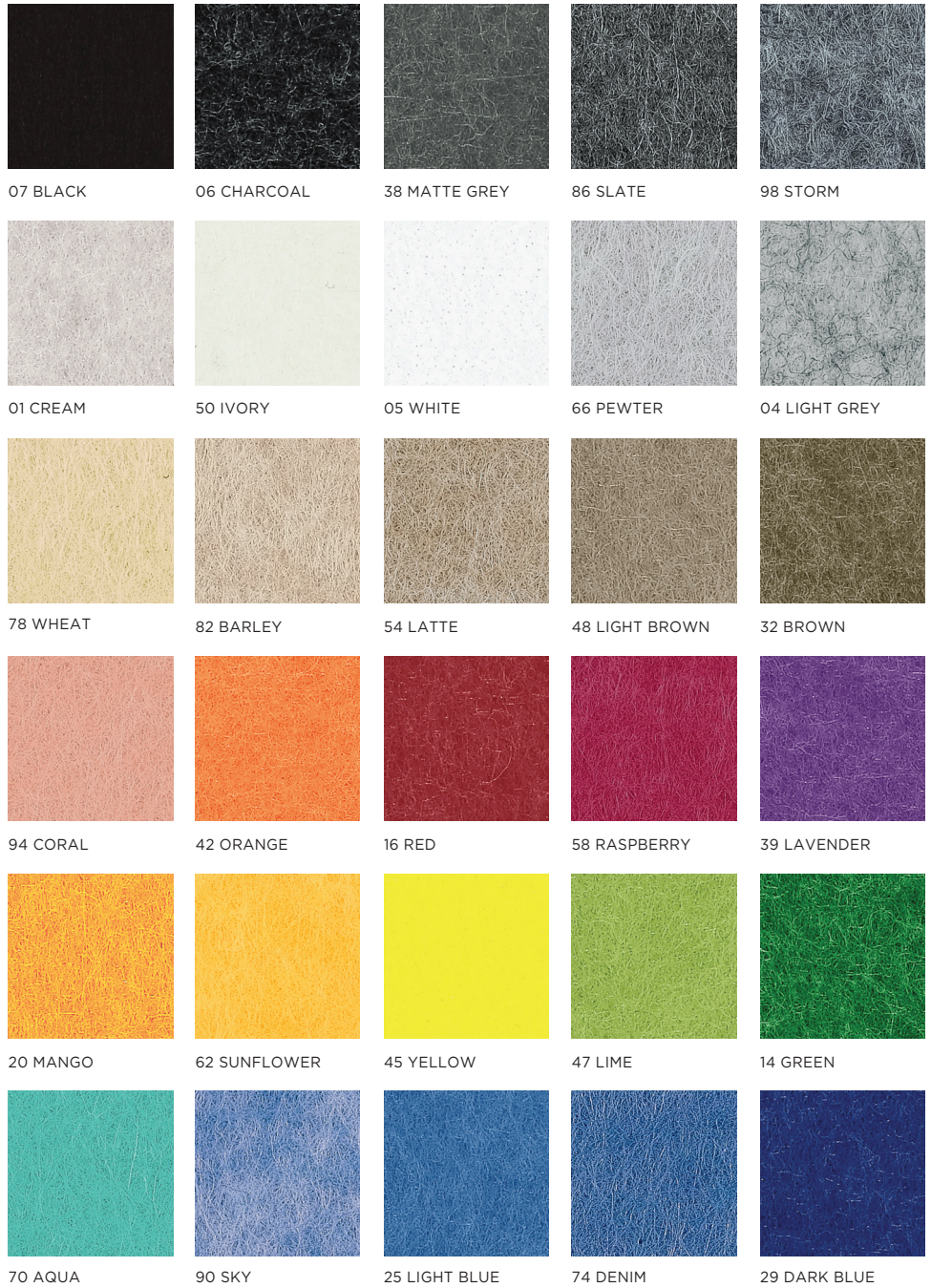
This product is made with 9 mm PET felt board. The process used to create PET felt often results in a heathered effect where multiple tones are present. Slight variations in color should be expected when using this sustainable material.

Felt thickness is 9 mm +/- 0.5 mm.

Monitors and printers vary. Please request a material sample to verify felt colors.



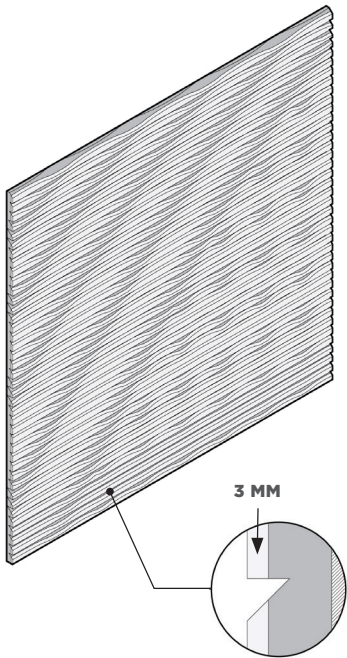
The substrate, revealed color, is 9 mm felt.



3MM FELT

In addition to the 9mm boards we can also integrate 3mm PET fabric into the products through lamination. The layered material enhances not only the acoustic performance, but allows for color combinations and color reveals.

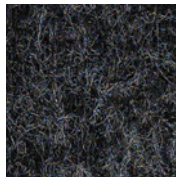
Monitors and printers vary. Please request a material sample to verify felt colors.



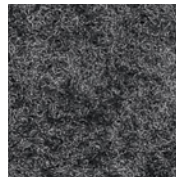
The top layer, removed material, is 3 mm felt.



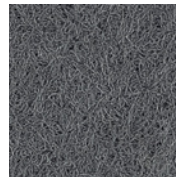
R11 BLACK



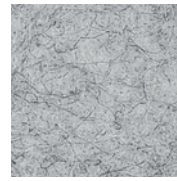
R28 MIDNIGHT



R02 DARK GREY



R25 FLINT



R03 LIGHT GREY



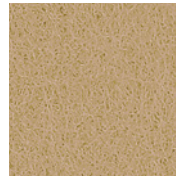
R01 WHITE



R09 BISQUE



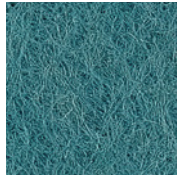
R13 PARCHMENT



R20 TAN



R07 MARIGOLD



R22 TEAL



R19 BLUE

TECH

ACOUSTICS

ASTM C423-17: Type A Mounting

FIRE RATING

ASTM E-84 – Class A

VOC

ASTM D5116 Compliant

DETAILS

DURABILITY

Contract

LEAD TIME

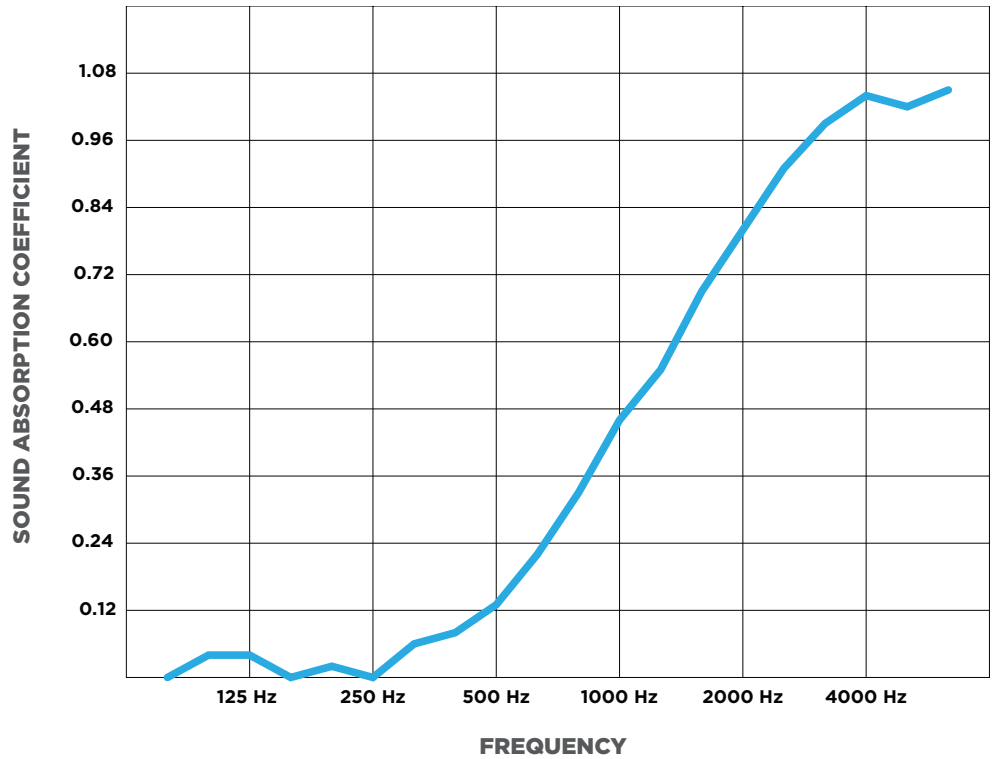
Ships in four (4) weeks

WARRANTY

Three (3) years

MAINTENANCE

Vacuum to remove any particulate matter and air-borne debris or dust. Compressed air can be used to dust the material in difficult to reach areas for large assemblies. Contact us for more information relative to spot cleaning.



12MM TILE: NRC = 0.35

ASTM C423-17: Type A Mounting. Carved wall tile NRC varies depending on field conditions and arrangement. Contact TURF for testing details.

Declare.

3mm + 9mm PET Acoustic Panel
TURF Design

Final Assembly: Elgin, Illinois, USA
Life Expectancy: 50 Year(s)
End of Life Options: Salvageable/Reusable in its Entirety, Recyclable (100%)

Ingredients:
PET, Flame Retardant, Lubricant, Pigment, Antioxidant 1, Antioxidant 2, Stabilizer

Living Building Challenge Criteria: Compliant

I-13 Red List:
 LBC Red List Free % Disclosed: 100% at 100ppm
 LBC Red List Approved VOC Content: Not Applicable
 Declared

I-10 Interior Performance: CDPH Standard Method v1.1-2010
I-14 Responsible Sourcing: Not Applicable

TFD-0002
 EXP. 01 NOV 2021
 Original Issue Date: 2019

INTERNATIONAL LIVING FUTURE INSTITUTE™ living-future.org/declare

