

AMOEBEA carved wall tile

Amoeba is TURF's sound-eating wall tile! The playful pattern expands from a single square into unique designs of circular cells and linked nodes. Made from sound-absorbing PET felt, the carved wall tile is available in TURF's 9 mm felt colors.



PATENT PENDING

SPECS

PRODUCT

Amoeba carved wall tile

CONTENT

polyester (PET) felt
60% pre-consumer recycled

BEVELED EDGE

carved at a 45° angle, 4.5 mm from the bottom on curved edges only

ONE COLOR 9MM TILE

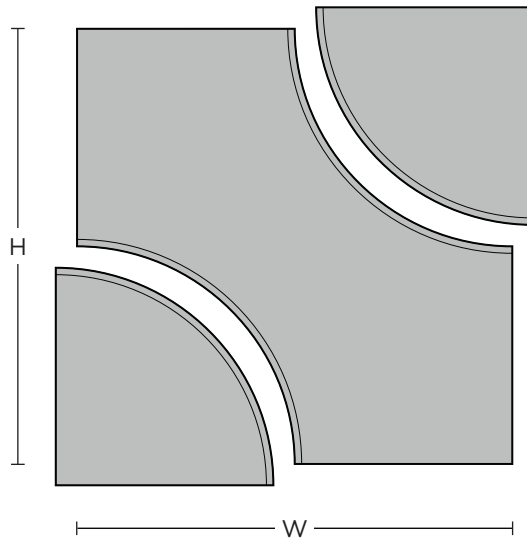
DIMENSIONS

11.75" W x 11.75" H x 9 mm T

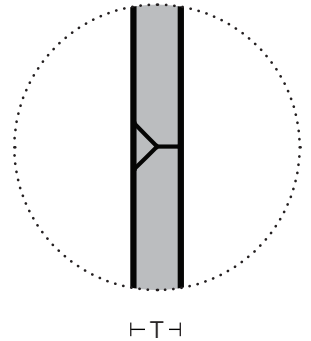
FELT THICKNESS

9 mm

FRONT VIEW



SIDE VIEW
enlarged edge



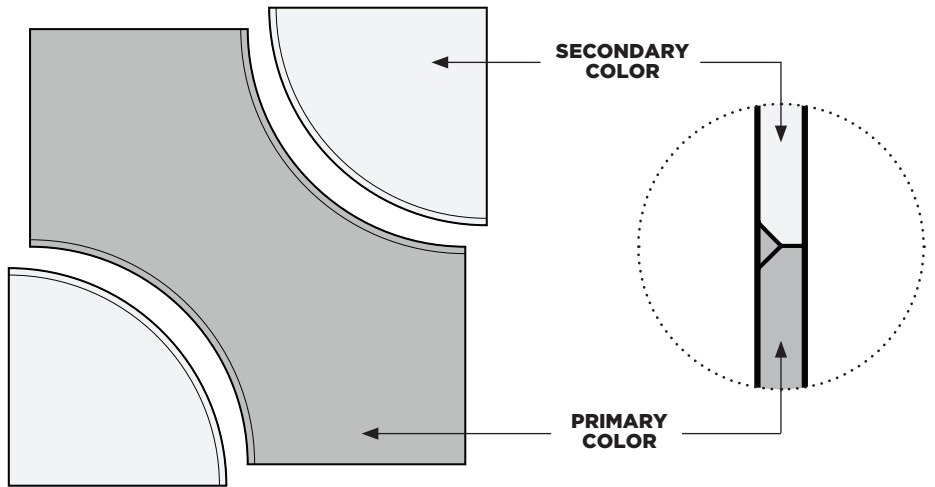
TWO COLOR 9MM TILE

DIMENSIONS

11.75" W x 11.75" H x 9 mm T

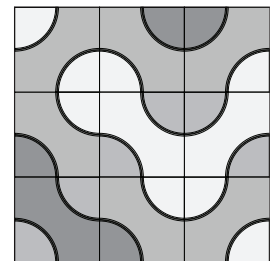
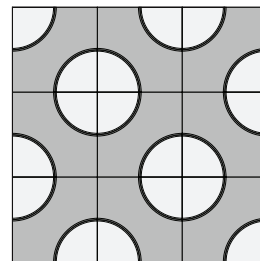
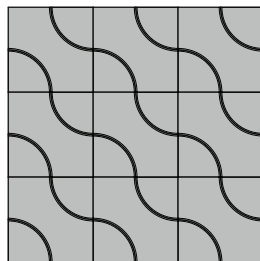
FELT THICKNESS

9 mm



LAYOUT

Amoeba's unique shapes may be configured in a variety of ways using one, two or more colors.



9MM FELT

TURF's Amoeba carved wall tile is made with 9mm PET felt board.

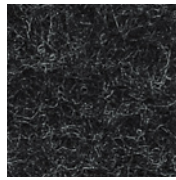
The process used to create PET felt often results in a heathered effect where multiple tones are present. Slight variations in color should be expected when using this sustainable material.

Felt thickness is 9mm +/- 0.5 mm.

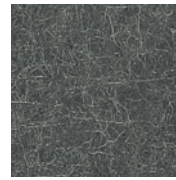
Monitors and printers vary. Please request a material sample to verify felt colors.



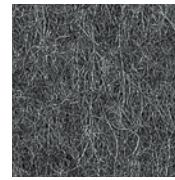
07 BLACK



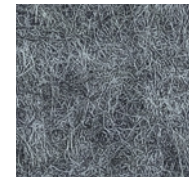
06 CHARCOAL



38 MATTE GREY



86 SLATE



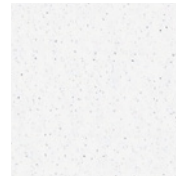
98 STORM



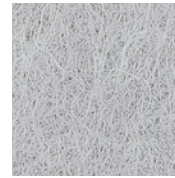
01 CREAM



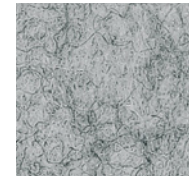
50 IVORY



05 WHITE



66 PEWTER



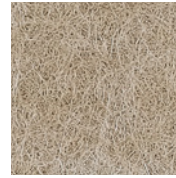
04 LIGHT GREY



78 WHEAT



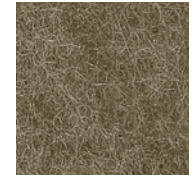
82 BARLEY



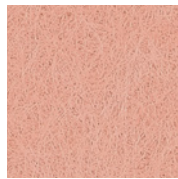
54 LATTE



48 LIGHT BROWN



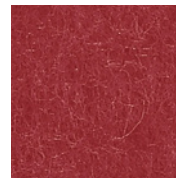
32 BROWN



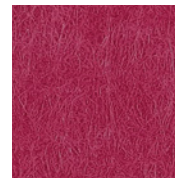
94 CORAL



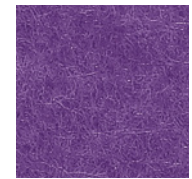
42 ORANGE



16 RED



58 RASPBERRY



39 LAVENDER



20 MANGO



62 SUNFLOWER



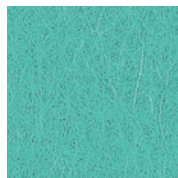
45 YELLOW



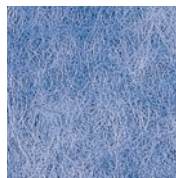
47 LIME



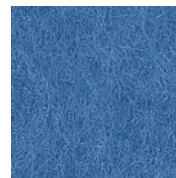
14 GREEN



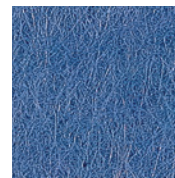
70 AQUA



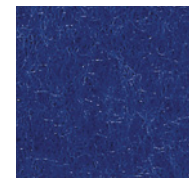
90 SKY



25 LIGHT BLUE



74 DENIM



29 DARK BLUE

TECH

ACOUSTICS

ASTM C423-17: Type A Mounting

FIRE RATING

ASTM E-84 - Class A

VOC

ASTM D5116 Compliant



TURF 9mm PET Acoustic Panel
Turf Design

Final Assembly: Elgin, Illinois, USA
Life Expectancy: 50 Years
End of Life Options: Salvageable/Reusable in its Entirety, Recyclable (100%)

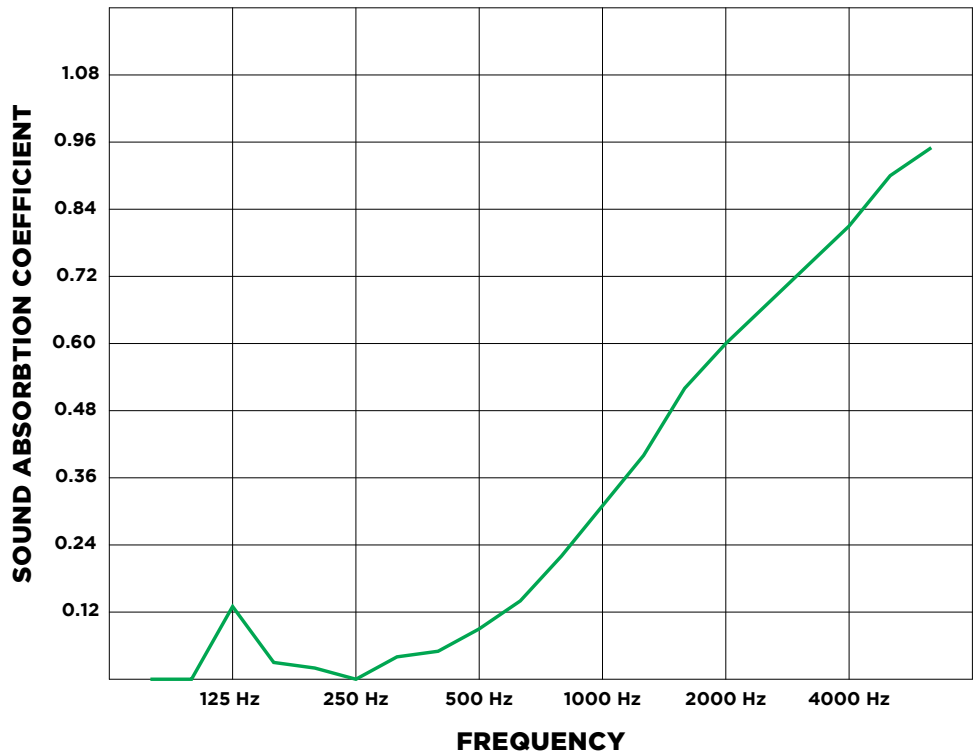
Ingredients:

Polyethylene Terephthalate: PET; Antioxidant 1076: Benzenamine, 4-(1-Methyl-1-Phenylethyl)-N-[4-(1-Methyl-1-Phenylethyl)Phenyl]-, Benzenepropanoic Acid, 3,5-Bis(1,1-Dimethylethyl)-4-Hydroxy-, Octadecyl Ester, Octadecanamide, N,N'-1,2-Ethanediybis-, Stearic Acid, Titanium Dioxide

Living Building Challenge Criteria:

TFD-0002	EXP 01 DEC 2020
VOC Content: N/A	VOC Emissions: CDPH Compliant
Declaration Status	<input checked="" type="checkbox"/> LBC Red List Free
	<input type="checkbox"/> LBC Compliant
	<input type="checkbox"/> Declared

MANUFACTURER RESPONSIBLE FOR LABEL ACCURACY
INTERNATIONAL LIVING FUTURE INSTITUTE™ declareproducts.com



■ 9MM TILE: NRC = 0.25

ASTM C423-17: Type A Mounting. Carved wall tile NRC varies depending on field conditions and arrangement. Contact TURF for testing details.

DETAILS

LEAD TIME

ships in four (4) weeks

INSTALLATION

Amoeba is available with or without an adhesive backing. More information is available in the carved wall tile installation instructions.

WARRANTY

three (3) years

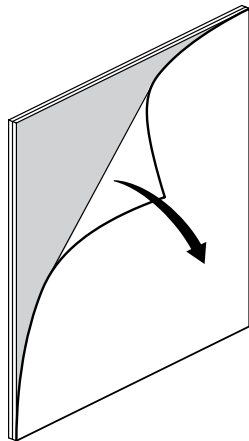
MAINTENANCE

Vacuum occasionally to remove any particulate matter and air-borne debris or dust. Compressed air can be used to dust the material in difficult to reach areas for large assemblies. Use standard household cleaners for spot cleaning.

CUSTOM

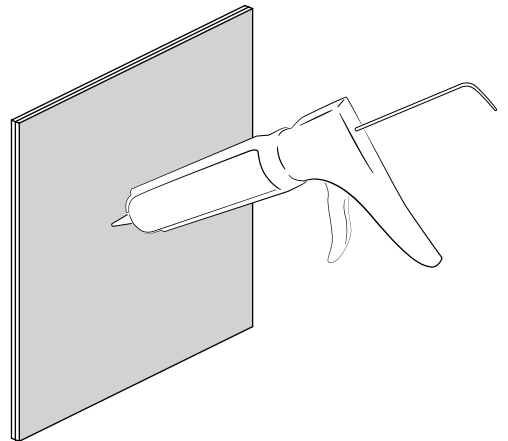
Amoeba carved wall tiles may be customized with additional layers and colors. Contact your rep for details.

ADHESIVE BACKING



A manufacturer-applied adhesive backing is available. The pressure-activated backing instantly adheres to a variety of wall surfaces.

CONSTRUCTION ADHESIVE



Carved wall tiles without an adhesive backing should be installed with a construction-grade adhesive specified by the contractor.