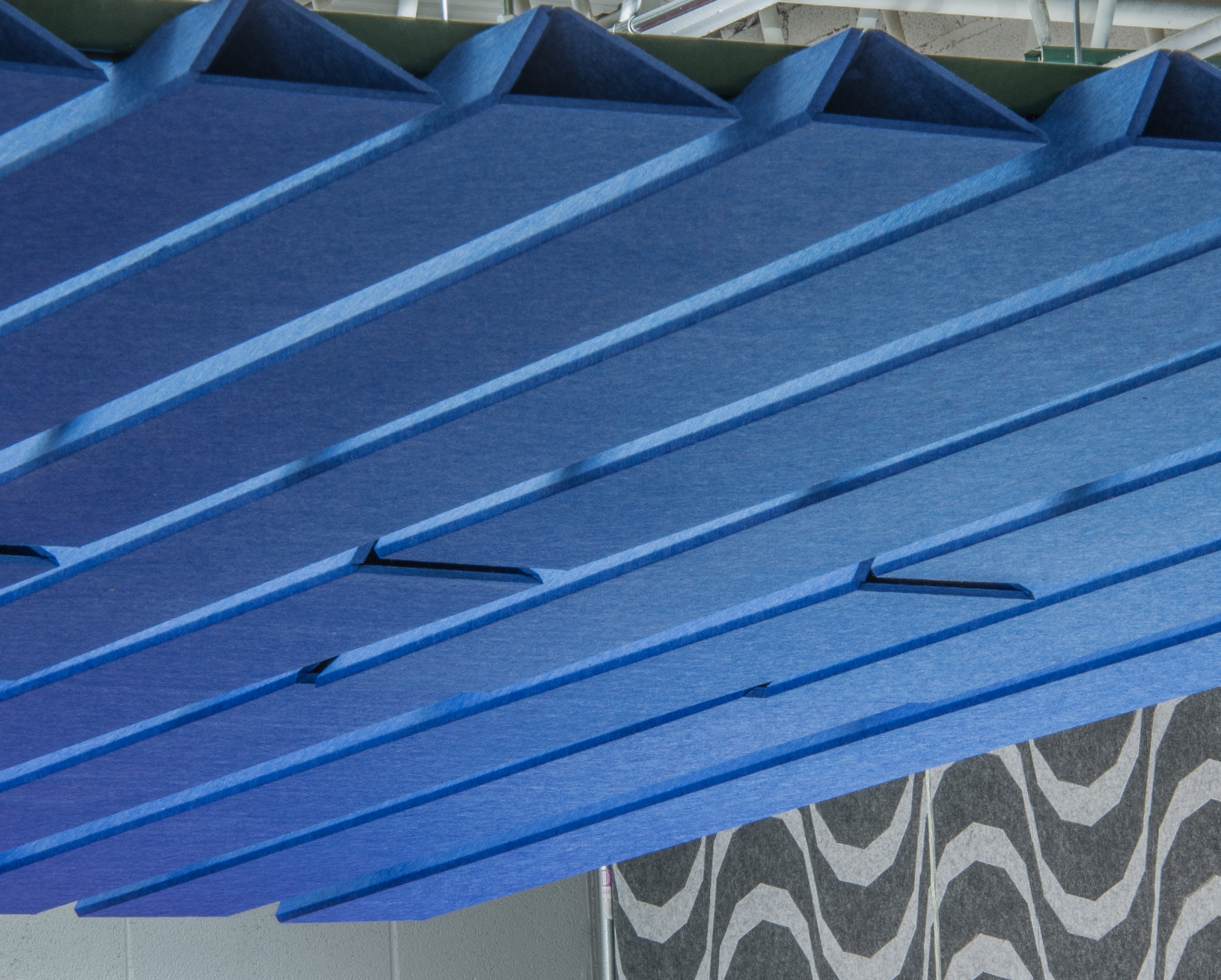


A close-up photograph of a staircase with blue carpeting. The stairs are viewed from a low angle, showing the blue carpeted treads and the dark blue, possibly felt, risers. A white handrail is visible on the left side of the frame. The background is slightly blurred, showing a white metal structure.

Boom Stick

by

T U R F

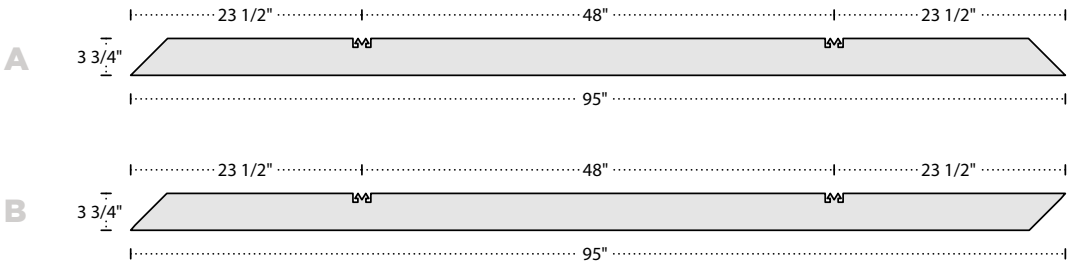


Boom Stick

TRIANGULAR & BOLD

Visually resonant and acoustically permeable, the Boom Stick was made for turning heads and absorbing decibels. Minimal and sophisticated, the Boom Stick baffle is the acoustic savior you have been waiting for.

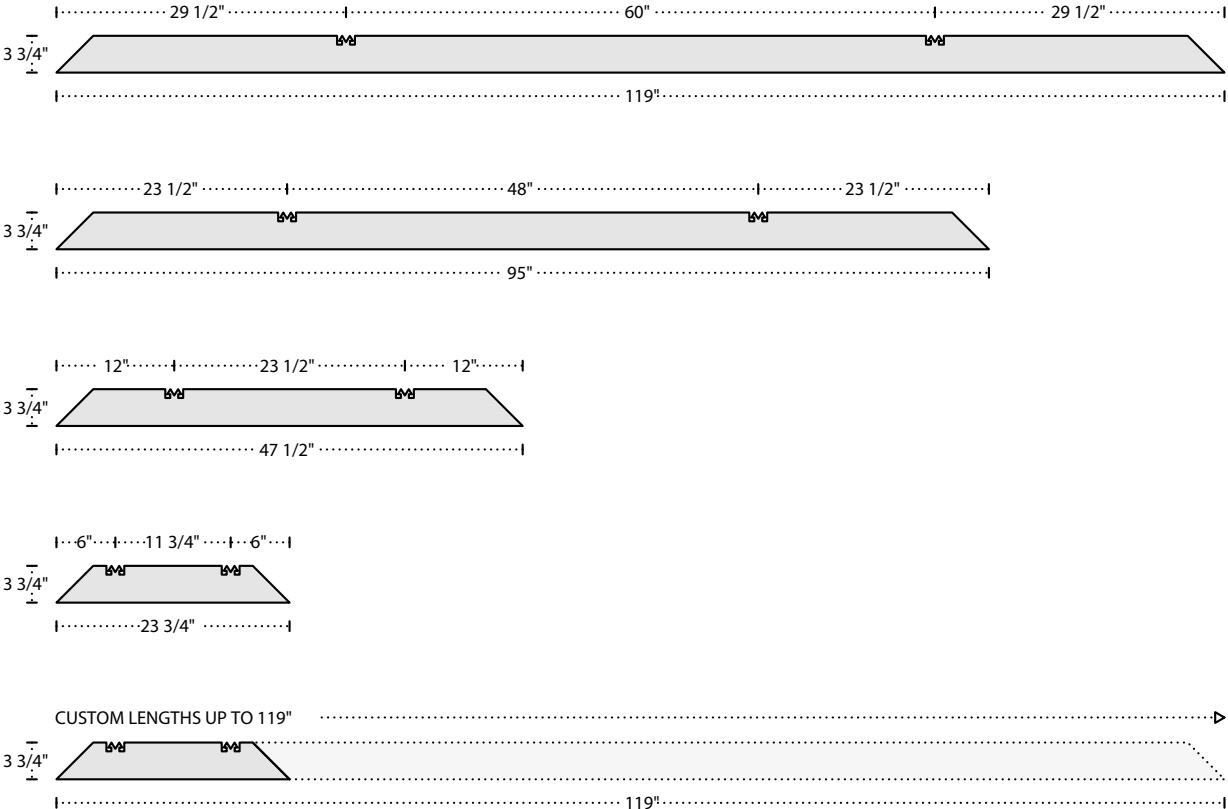
Baffle Sizes



1

BAFFLE OPTIONS A & B

The Boom Stick is folded from a single sheet of 9mm felt material, creating a triangular profiled baffle. Each Boom Stick is equipped with an internal **3" air gap**, boasts a **1.55 NRC rating**, and is made of **99% post-consumer recycled plastic**.

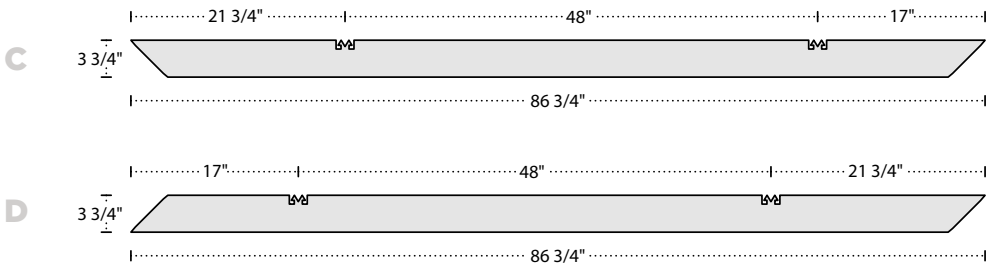


2

FRONT ELEVATION

In addition to custom lengths up to 119", Boom Sticks A and B also come in three standard sizes, making this product incredibly flexible.

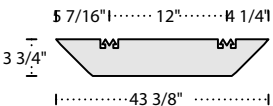
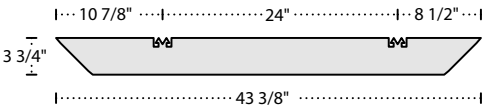
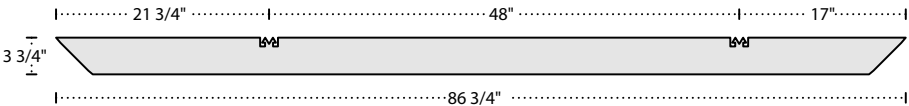
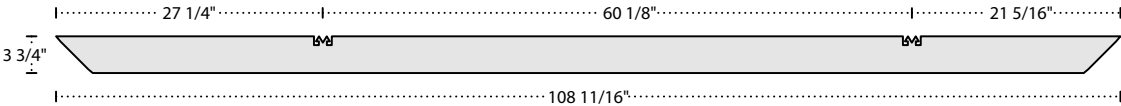
Baffle Sizes



1

BAFFLE OPTIONS C & D

The Boom Stick is folded from a single sheet of 9mm felt material, creating a triangular profiled baffle. Each Boom Stick is equipped with an internal **3" air gap**, boasts a **1.55 NRC rating**, and is made of **99% post-consumer recycled plastic**.

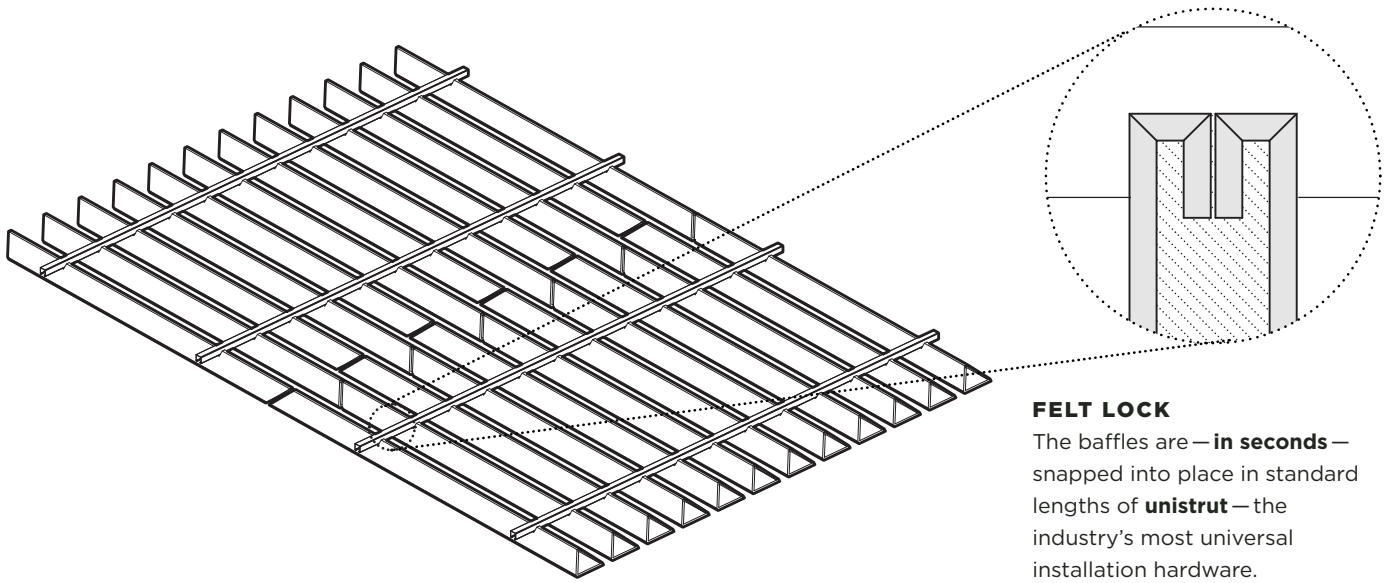


2

FRONT ELEVATION

In addition to custom lengths up to 108 11/16", Boom Sticks C and D also come in three standard sizes, making this product incredibly flexible.

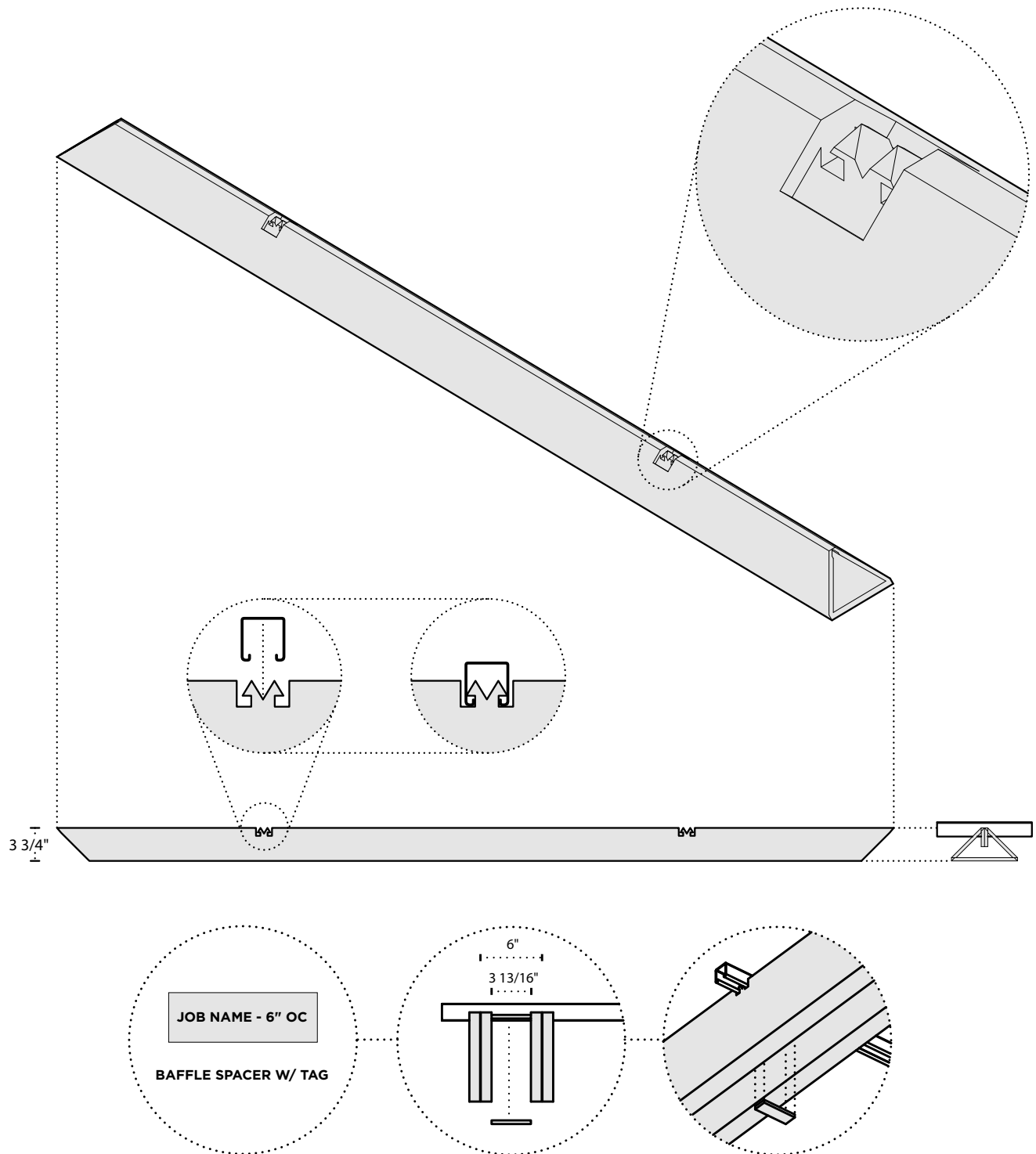
Connection Types



FELT LOCK

The baffles are — **in seconds** — snapped into place in standard lengths of **unistrut** — the industry's most universal installation hardware.

Felt Lock



1

*Spacing dependent on project

BAFFLE ASSEMBLY

The baffles are — **in seconds** — snapped into place in standard lengths of **unistrut** — the industry’s most universal installation hardware. Evenly spaced with 9mm strips of felt that slide into the unistrut channel in between baffles.

Specifications

PRODUCT NAME	Boom Stick
CONTENT	Up to 60% Pre-Consumer Recycled Content
FELT THICKNESS	9mm
PANEL THICKNESS	Varies
SMALLEST SIZE	3.75" x 7.5" x 21.625"
MAXIMUM SIZE	3.75" x 7.5" x 119"
EDGE OPTIONS	Exposed Felt
COMPONENTS	UNISTRUT P1000T Standard, nylon panel clip, universal steel Tee Grid, 1/16th inch Aircraft Cable. (supplied by installer)
DURABILITY	Contract
MAINTENANCE	Vacuum occasionally to remove any particulate matter and air-borne debris or dust. Compressed air can be used to dust the material in difficult to reach areas for large assemblies.
LEAD TIME	Shipped in 4 weeks.
ENVIRONMENTAL	9mm PET felt board is made from up to 99% recycled polyester plastic, over 50% of which come from recycled water bottles. TURF has a Declare Label for this product. TURF is pursuing product transparency for LEED V4 MR Credit 4 Option 1, and MR Credit 3 Option 2 for recycled content.
VARIATION	PET Felt uses a traditional 'felting' process to create its panels. This often results in a pleasing heathered effect, where multiple tones are present in the fiber. Slight and consistent variations in color should be expected when using this sustainable material.
ACOUSTICS	ASTM C423-17: NRC = 0.75 (Material)
VOC	ASTM D 5116 Compliant
FIRE RATING	Product made from Class A PET felt material tested under ASTM E-84.

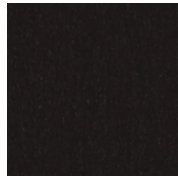
9MM FELT

TURF's Book stick ceiling baffle is made with 9mm PET felt board.

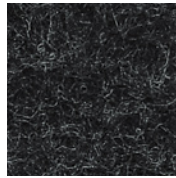
The process used to create PET felt often results in a heathered effect where multiple tones are present. Slight variations in color should be expected when using this sustainable material.

Felt thickness is 9mm +/- 0.5 mm.

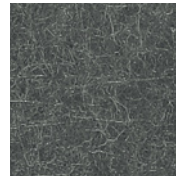
Monitors and printers vary. Please request a material sample to verify felt colors.



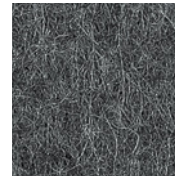
07 BLACK



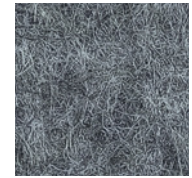
06 CHARCOAL



38 MATTE GREY



86 SLATE



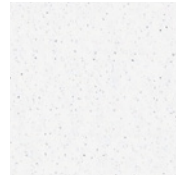
98 STORM



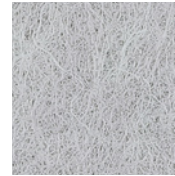
01 CREAM



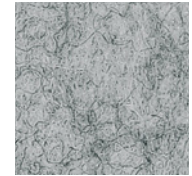
50 IVORY



05 WHITE



66 PEWTER



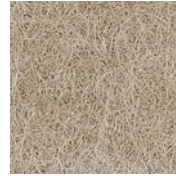
04 LIGHT GREY



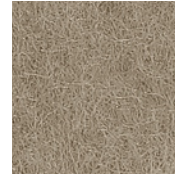
78 WHEAT



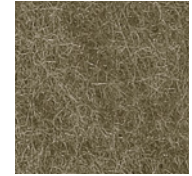
82 BARLEY



54 LATTE



48 LIGHT BROWN



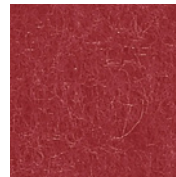
32 BROWN



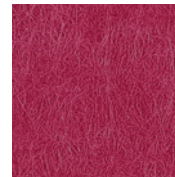
94 CORAL



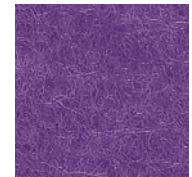
42 ORANGE



16 RED



58 RASPBERRY



39 LAVENDER



20 MANGO



62 SUNFLOWER



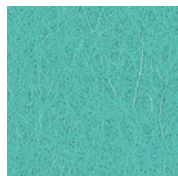
45 YELLOW



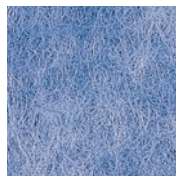
47 LIME



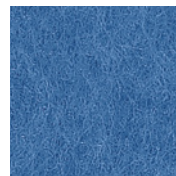
14 GREEN



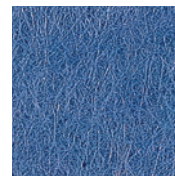
70 AQUA



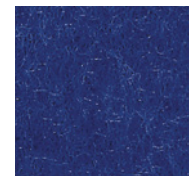
90 SKY



25 LIGHT BLUE



74 DENIM



29 DARK BLUE

TEXTURES

Invite nature into your space with our wood-inspired textures. Digital printing on felt ensures a unique and realistic grain with virtually no repeats.

CUSTOM

Endless customization options are available, including color and grain matching to your sample.

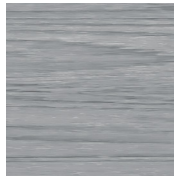
* Please note there is additional lead time for custom matching. Texture and customization will incur additional costs beyond our standard 9 mm options.

Felt thickness is 9 mm +/- 0.5 mm.

Monitors and printers vary. Please request a material sample to verify felt colors.



D01 WHITE ASH



D02 SILVER TEAK



D03 CLEAR MAPLE



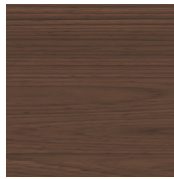
D04 WASHED ASH



D05 MEDIUM OAK



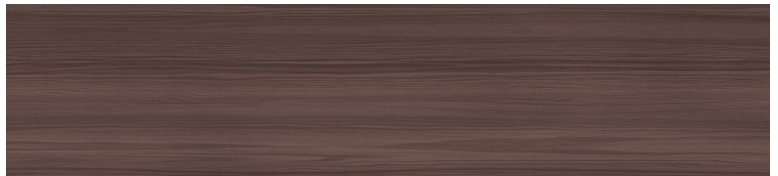
D06 PLANKED OAK



D07 DARK WALNUT

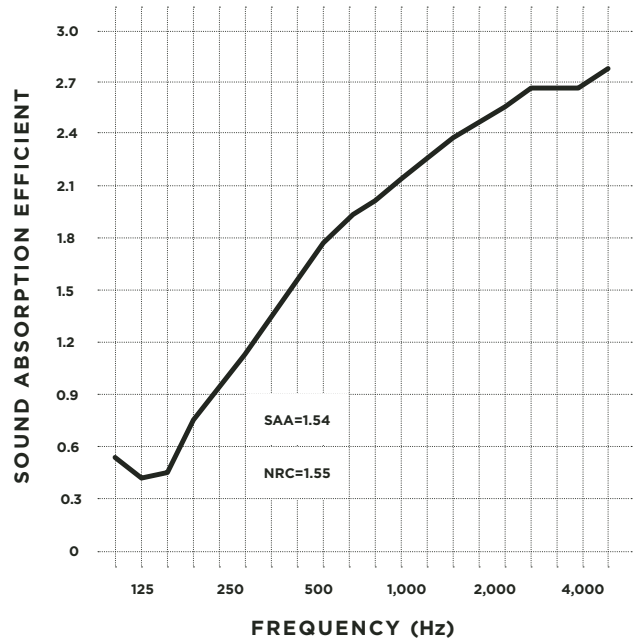


D08 BLACK PEAR



Acoustic Testing (ASTM C 423-17)

FREQUENCY (Hz)	SOUND ABSORPTION COEFFICIENT
32	.04
40	-.01
50	-.13
63	.49
80	.43
100	.30
125	.21
160	.22
200	.42
250	.57
315	.78
400	.98
500	1.22
630	1.42
800	1.63
1,000	1.88
1,250	2.15
1,600	2.32
2,000	2.48
2,500	2.58
3,150	2.56
4,000	2.56
5,000	2.64
6,300	2.61
8,000	2.63
10,000	2.60
12,500	2.41



TEST ARRANGEMENT

Type J Mounting: The specimen is an array of spaced sound absorbing baffles suspended from a cable approximately 1206.5mm (47.5 in.) above the horizontal test surface. This approximates the mounting method of a typical ceiling baffle installation. The baffles were evenly distributed in four rows four units each. Baffles were spaced 305 mm (12 in.) apart. Rows were spaced 762mm (30 in.) apart.

Declare.

TURF 9mm PET Acoustic Panel
Turf Design

Final Assembly: Elgin, Illinois, USA
Life Expectancy: 50 Years
End of Life Options: Salvageable/Reusable in its Entirety, Recyclable (100%)

Ingredients:
Polyethylene Terephthalate; PET; Antioxidant 1076; Benzenamine, 4-(1-Methyl-1-Phenylethyl)-N-[4-(1-Methyl-1-Phenylethyl)Phenyl]-, Benzenepropanoic Acid, 3,5-Bis(1,1-Dimethylethyl)-4-Hydroxy-, Octadecyl Ester, Octadecanamide, N,N'-1,2-Ethanediybis-, Stearic Acid, Titanium Dioxide

Living Building Challenge Criteria:

TFD-0002	EXP 01 DEC 2020
VOC Content: N/A	VOC Emissions: CDPH Compliant
Declaration Status	<input checked="" type="checkbox"/> LBC Red List Free <input type="checkbox"/> LBC Compliant <input type="checkbox"/> Declared

MANUFACTURER RESPONSIBLE FOR LABEL ACCURACY
INTERNATIONAL LIVING FUTURE INSTITUTE™ declareproducts.com