

## Vallox **Capto** KTC EA

### Manual

---



The Vallox Capto KTC EA cooker hood is designed to be used above the cooker top in apartments with centralized ventilation or as a general extraction valve in the kitchen.

The hood has a timer damper, a guard function, pressure equalization chamber, and fire damper.

## VENTILATION CONTROL

In buildings with a centralized ventilation that allows the residents to boost extraction during cooking, this is done using the adjustment damper of the hood.

The cooker hood meets the requirements set for a fire damper and for sound-dampening between apartments.



### WARNING!

The unit is not intended for use by children under 8 or by persons with reduced sensory, physical or mental capabilities, or whose lack of knowledge and experience do not ensure safe operation of the unit. Such persons can use the unit under supervision, or by following the instructions of someone who is responsible for their safety. Do not let children play with the unit or to clean or maintain it without supervision.



### CAUTION

- Neglecting the cleaning of the grease filter can cause a fire hazard.
- The outer surfaces of the hood can become hot when the cooker or the oven is turned on.
- Flaming is forbidden underneath the cooker hood.
- Always follow the instructions provided on adjusting the efficiency of ventilation.
- Enable a sufficient supply airflow into the room if the cooker hood and non-electric devices are used simultaneously.

## USING THE COOKER HOOD

The cooker hood has a sliding glass that can be pulled out of the cooker hood. It is recommended that the sliding glass be pushed or pulled from the aluminum strip on its front edge. Pull the glass out of the cooker hood for maximal extraction capacity.

### Front panel buttons

The front panel of the cooker hood has three buttons.

VALLOX



### Position of the damper

**In a normal situation, the damper must be closed** (the signal light will then be off).

**The damper must be open** (the signal light is turned on) **when the user wants to increase the extract air flow from the cooker hood** e.g.

- when the cooker top or the oven is used for cooking or
- the load in the kitchen is exceptional due to the use of strong detergents, presence of a large number of people, or similar.

Touch the button on the damper to open it and to start the timer. The damper will close automatically within 60 minutes.



### Cooker hood light

Turn the light on or off by pressing the light switch. The light is dimmable. Adjust the brightness by pressing the light switch until the brightness is adequate.

### Settings button

The settings button is roughly 2 cm to the left from the light switch.

## Other functions

### Guard function

The cooker hood is equipped with a guard function that is activated when the temperature of the cooker hood exceeds 60°C or after a sudden increase in temperature (> 8°C/min). In such a case, all signal lights of the cooker hood and the LED light will flash. If this kind of alarm is noticed before fire damage, it can be acknowledged by pressing any of the cooker hood buttons.

### Pre-setting of light brightness

#### To modify the pre-setting of light brightness:

1. Turn the light on, close the damper.
2. Press the settings button for roughly 3 seconds until the setting mode signal light starts to flash.
3. Adjust the brightness of the light by pressing the light button until the brightness is adequate.
4. To save the setting, press the settings button for roughly 3 seconds until the setting mode signal light stops to flash.

To read about the other functions of the settings button, go to our website, [www.vallox.com](http://www.vallox.com).

## MAINTENANCE

Keep the cooker hood clean. Wipe outer surfaces regularly with water containing a small amount of a mild detergent. Clean off any grease stains immediately. Do not use abrasive or corrosive detergents or tools.

Keep the grease filter clean to ensure an adequate extract air flow. The grease filter must be washed with warm water and detergent at least 1-2 times a month.

### Light

The cooker hood has a long-lasting LED lighting module. If the light is not working, contact a servicing company.

### Removing and mounting the grease filter



Removing the filter



Mounting the filter

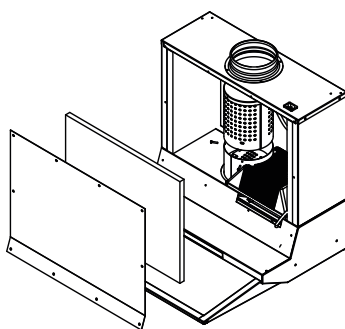
- Pull the locking device of the grease filter towards the front edge of the cooker hood while pulling the grease filter downwards until it comes off.
- Wash the grease filter and leave to dry.
- Mount the grease filter back in place. Push the front edge of the filter into the pins on the cooker hood, and click the rear edge in place.

**NOTE! Ensure that the locking device points downwards.**

## Cleaning the perforated pipe of the cooker hood

The level of dirtiness of the inside surface of the perforated pipe must be controlled at least once a year. Open the damper of the cooker hood and check the perforated pipe from below by looking inside with e.g. a torch to determine if it needs to be cleaned.

If the perforated pipe needs to be cleaned, call the service person of the housing company or clean the pipe yourself following the adjacent instructions. Use detergent designed for cleaning baked-on coatings.



## Cleaning of the perforated pipe

- Empty and remove the spice cabinet.
- Open the screws of the hood's maintenance door and remove the door and insulation.
- Open the two screws of the pressure limitation pipe and lift the pipe off.
- Clean the inside and outside of the perforated pipe.
- Do not remove or move the magnetic strips.
- The extract air duct can be cleaned at the same time.
- Reassemble the perforated pipe, maintenance door and insulation, and the spice cabinet in a reverse order.

## INSTALLATION

In the example, the bottom of the sides and the rear of the cooker hood are level with the bottom of the top cabinets (see figures 1-2). In this case, a specially made cover panel is needed to hide the hood. The height of the cover panel is roughly 210 mm.

The hood can also be installed higher, even so that it touches the frame of the spice cabinet. In this case, rear corners need to be sawn off from the spice cabinet frame (see figure 3). In this mounting method, the height of the hood cover panel is 100 mm.

When the lowest possible mounting height is used, the bottom edge of the sliding glass, when pushed inside the hood, is level with the bottom of the top cabinet frames (see figure 4). The L strip is mounted on the wall as shown in figure 5. In this mounting method, the height of the hood cover panel is roughly 248 mm.

### Figure 1.

Remove the spice cabinet. Mount the L strip on the wall so that it is level.

The L strip fully covers the gap between the hood and the wall and also makes it easier to balance the hood in place during mounting.

If the top cabinet frames are less than 305 mm deep, the longer edge of the L strip is mounted on the wall. The perforations on the lower surface of the L strip can be covered using white plastic studs.

### Figure 2.

Place the hood on top of the L strip so that it is level and fasten the hood on the top cabinet frames with four screws. It is vital

that the hood is both vertically and horizontally level. The front panel of the hood must be at the same depth as the outer surface of the top cabinet doors.

### Figure 3.

If the highest possible hood mounting height is used, saw off diagonal pieces measuring at least 20x50 mm from the spice cabinet frame.

### Figure 4.

The cooker hood when the lowest possible mounting height is used.



## CAUTION

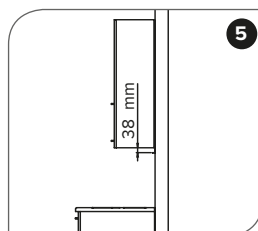
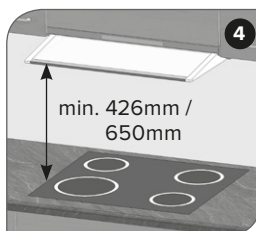
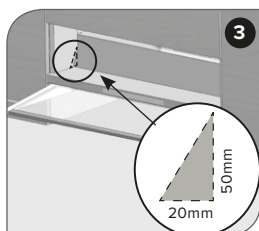
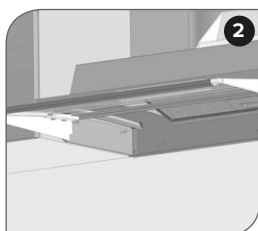
The minimum distance of the bottom edge of the hood to an electric cooker is 426 mm and to a gas cooker 650 mm.

### Figure 5.

Location of the L strip when the lowest hood mounting height is used.

Where required, the hood can also be fastened on the wall with corner mounts from the top of the pressure equalization chamber.

Connect the hood to the extract air ducts with a  $\varnothing 125$  mm spiral duct. Ensure airtightness and lock the connection with three steel screws.



## CAUTION

- The cooker hood must not be connected to a flue that is used for removing combustion gases (e.g. from a wood- or gas-burning fireplace, cooker, or stove).
- Regulations on leading extraction air outdoors must be observed.



## CAUTION

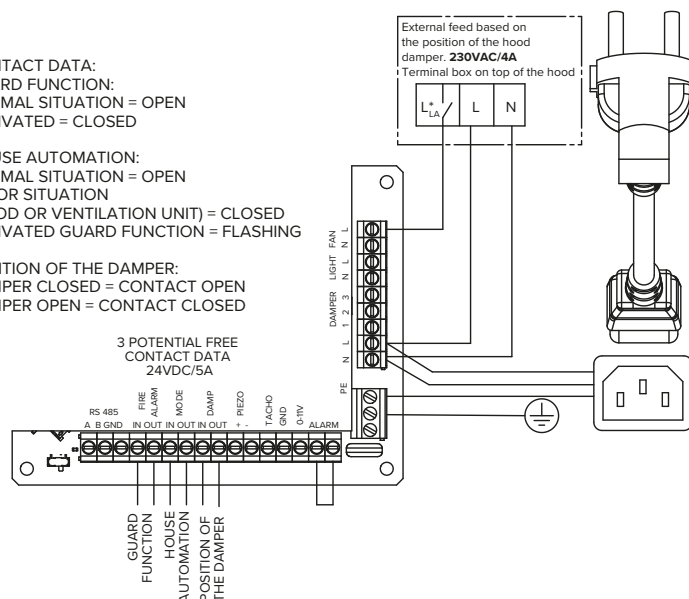
- The power outlet used for the cooker hood must be easy to access.

## External electrical connection

CONTACT DATA:  
GUARD FUNCTION:  
NORMAL SITUATION = OPEN  
ACTIVATED = CLOSED

HOUSE AUTOMATION:  
NORMAL SITUATION = OPEN  
ERROR SITUATION  
(HOOD OR VENTILATION UNIT) = CLOSED  
ACTIVATED GUARD FUNCTION = FLASHING

POSITION OF THE DAMPER:  
DAMPER CLOSED = CONTACT OPEN  
DAMPER OPEN = CONTACT CLOSED



## Measuring and adjusting performance values

### Standard ventilation

The volume flow rate of the air inside the cooker hood is measured with the damper closed.

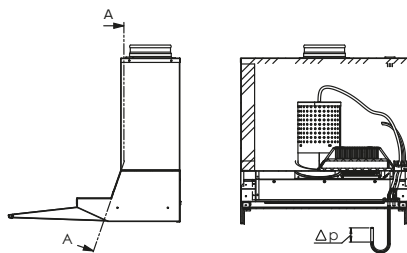
#### Measuring

- The air flow measuring tubes are located behind the cooker hood light on the right side.
- Connect the differential pressure gauge to the measuring tube that is marked with a "min." sticker. The enclosed figure illustrates the measuring principle.

#### Adjustment

- Cover the required number of holes in the damper with the magnetic strip that is delivered with the cooker hood.
- Determine the volume flow rate from the performance scheme based on the measured pressure and the number of open holes in the damper.

Measuring standard ventilation



STANDARD VENTILATION		
Damper closed		
Setting	Holes open / damper	K-value
2	2	1,1
3	3	1,3
4	4	1,5
5	5	1,6
6	6	1,8
7	7	2,2
8	8	2,4

BOOST VENTILATION		
Damper open		
Setting	Holes open / perforated air duct	K-value
132	132 (2 magnetic strips)	3,0
174	174 (1 magnetic strips)	3,8
216	216 (all are open)	4,3

### Boost ventilation

The volume flow rate is measured and adjusted with the damper open.

#### Measuring

- The measuring tubes should be connected as specified in the standard ventilation section.
- The differential pressure gauge is connected to both measuring tubes. The enclosed figure illustrates the measuring principle.
- Determine the volume air flow from the performance scheme based on the measured pressure.

#### Adjustment

- Cover the required number of holes in the perforated air duct with the magnetic strip that is delivered with the cooker hood.

Measuring boost ventilation

