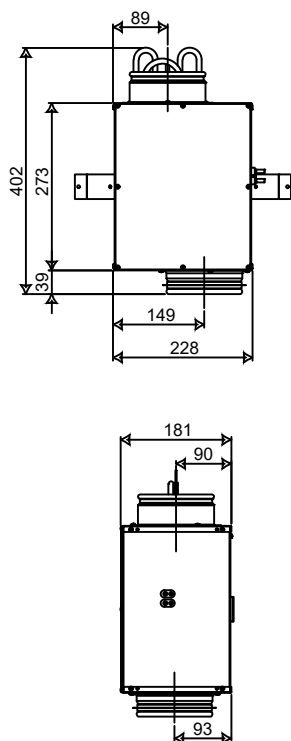
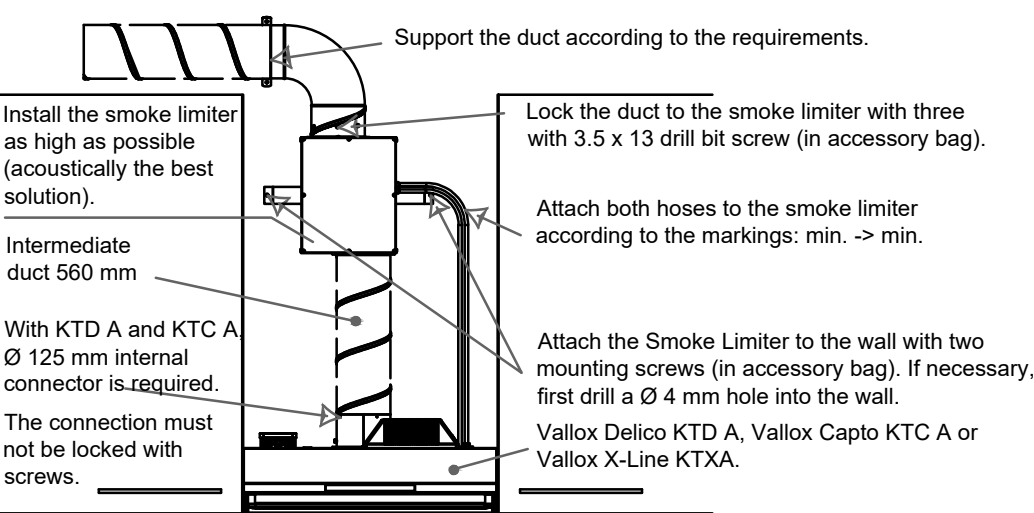


VALLOX SMOKE LIMITER

DIMENSIONS



INSTALLATION



DESCRIPTION OF OPERATION

Vallox Smoke Limiter

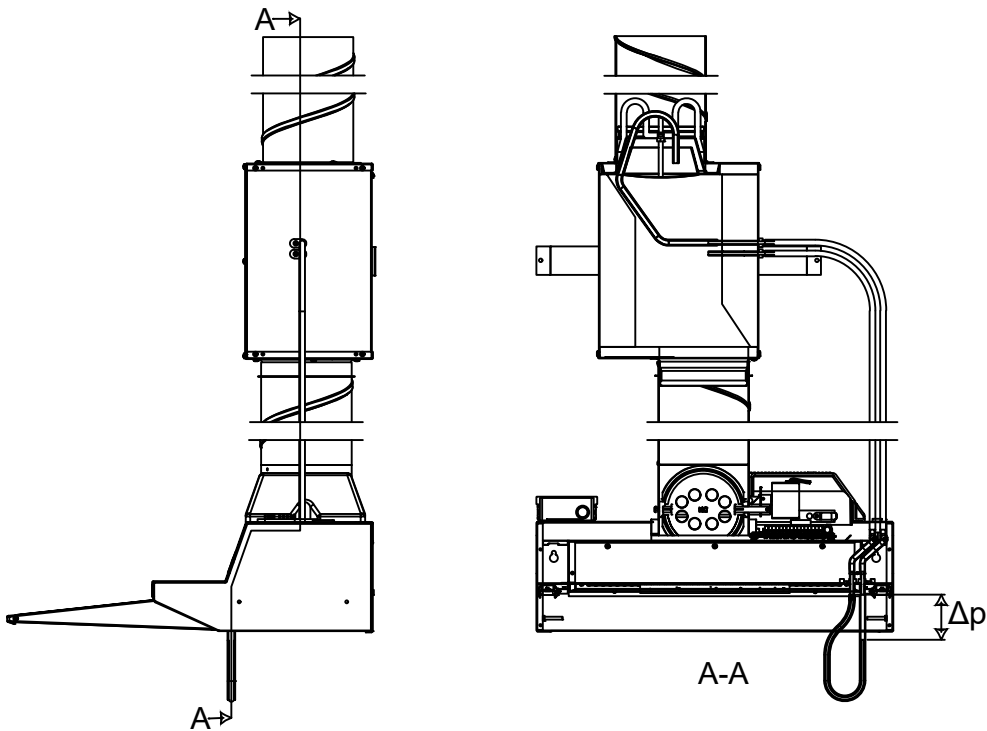
- When installing in the common duct system of apartment buildings, a Vallox Smoke Limiter must be connected to the KTX A and KTD A stove hoods.
- Vallox Smoke limiter meets the requirements set for a choke acting as a fire limiter (max 42 l/s @ 100 pa).

PRODUCT NUMBERS

Model	Product number	HVAC-number	Electrical number
Vallox Smoke Limiter	4107216	7911286	8503604

Revision	Date	Drawer	Muutos	VALLOX		Target Customer Addr. 1 Addr. 2		DESCRIPTION AND CONNECTION Vallox Smoke Limiter			
				Drawer Person1	Designer Person1	Project number 001	Date. DATE	Revision ...	Drawing number 001	Page 01 /02	

VALLOX SMOKE LIMITER



The exhaust air terminal (KSO-125) is locked in a way that it meets the requirements set for the smoke limiter (42 dm³/s @ 100 Pa). The exhaust air terminal must not be adjusted!

Revision	Date	Drawer	Muutos	<div>VALLOX</div>		Target Customer Addr. 1 Addr. 2		DESCRIPTION AND CONNECTION			
								Vallox Smoke Limiter			
				Drawer Person1	Designer Person1	Project number 001	Date. DATE	Revision ...	Drawing number 001	Page 02 /02	