

VALLOX COOKER HOODS





Compatibility of older Valmet, MUH and Vallox cooker hoods



VALLOX
HOME *of* FRESH AIR

The type plate of the old cooker hood contains a letter combination that can be used to select the new Vallox cooker hood. The mere type number is not, however, sufficient to identify the type of the cooker hood. The widths are 500 and 600 mm.

VALLOX **VALLOX**
X-Line Delico

<i>Old hood</i>	<i>Replacement Vallox X-Line hood</i>	<i>Replacement Vallox Delico hood</i>
<p><i>LS, LM, PTS, PTX, PTXP, PTXPA and PTC AC cooker hoods</i></p> <p>These cooker hoods are used to control (with the transformer) a roof fan, ventilation unit, duct fan, or an air heating unit that is equipped with an AC fan.</p>	 <p>Vallox X-line PTX cooker hood</p> <p>These cooker hoods have a fixed glass, fan speed adjustment, an On/Off switch, a damper, and feed to the electric post-heating radiator of the ventilation unit. If the old cooker hood has forced control, i.e. it does not have an On/Off switch, it can be replaced with the X-Line PTXP cooker hood. In addition to the above, PTXPA models have a damper with a timer function. They can be replaced with the new X-Line PTXPA models.</p> <p>HVAC codes: 7911114 PTX 500 White 7911116 PTX 600 White 7911118 PTXP 500 White 7911120 PTXP 600 White 7911126 PTXPA 500 White 7911128 PTXPA 600 White</p>	 <p>Vallox Delico PTD AC cooker hood</p> <p>These cooker hoods have a steam collection part that can be pushed inside the cooker hood, a fan speed adjustment, an On/Off switch that is enabled only when needed, a damper with a timer function, a guard function, and a feed to the electric post-heating resistor of the ventilation unit.</p> <p>HVAC codes: 7911299 PTD AC 500 white 7911300 PTD AC 600 white 7911301 PTD AC 500 black 7911303 PTD AC 600 black</p>
<p><i>PTXP SC, PTXP MC ja PTC EC cooker hoods</i></p> <p>These cooker hoods are used to control (with 0-10 VDC voltage messages) a roof fan, ventilation unit, or duct fan that is equipped with a DC or EC fan.</p>	 <p>Vallox X-Line PTXP MC cooker hood</p> <p>These cooker hoods have fixed glass, a fan speed adjustment (no On/Off switch) and a damper. In PTXPA SC and PTXPA MC models, the damper has a timer function. They can be replaced with the new X-Line PTXPA MC models.</p> <p>HVAC codes: 7911280 PTXP MC 500 white 7911281 PTXP MC 600 white 7911282 PTXPA MC 500 white 7911283 PTXPA MC 600 white</p>	 <p>Vallox Delico PTD EC cooker hood</p> <p>These cooker hoods have a steam collection part that can be pushed inside the hood, a fan speed adjustment, a damper with a timer function and a guard function. The On/Off switch is only used when needed.</p> <p>HVAC codes: 7911287 PTD EC 500 white 7911288 PTD EC 600 white 7911289 PTD EC 500 black 7911290 PTD EC 600 black</p>

Old hood

Replacement Vallox X-Line hood

Replacement Vallox Delico hood

*KT, KTS, KTX, KTXR
and KTC cooker
hoods*

These cooker hoods are usually connected to the joint extraction system of multi-storey buildings.



Vallox X-Line KTX cooker hood

These cooker hoods have a fixed glass.

HVAC codes:
7911110 KTX 500 White
7911112 KTX 600 White



Vallox Delico KTD cooker hood

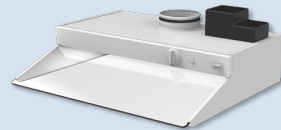
These cooker hoods have a steam collection part that can be pushed inside the cooker hood.

HVAC codes:
7911295 KTD 500 white
7911296 KTD 600 white
7911297 KTD 500 black
7911298 KTD 600 black

Please note! Never install KTX or KTD cooker hoods without a joint duct valve! The airflow of the hood designed for multi-storey buildings is adjusted by means of the joint duct valve of the hood, which also serves as a smoke limiter. The valve and the related frame must be removed from the old cooker hood (without changing the setting!) and installed in the new cooker hood.

*KTXA and KTC A
cooker hoods*

These cooker hoods are connected to the joint extraction system of a multi-storey building or to an apartment-specific ventilation unit. These cooker hoods have a booster feature for the removal of cooking smells by means of a timer damper.



Vallox X-Line KTXA cooker hood

These cooker hoods have a fixed glass and a timer damper. Please note! These cooker hoods must not be connected to the joint extraction system of a multi-storey building without a smoke limiter.

HVAC codes:
7911125 KTXA 500 White
7911127 KTXA 600 White



Vallox Delico KTD A cooker hood

These cooker hoods have a steam collection part that can be pushed inside the hood, a damper with a timer function and a guard function. Please note! These cooker hoods must not be connected to the joint extraction system of a multi-storey building without a smoke limiter.

HVAC codes:
7911291 KTD A 500 white
7911292 KTD A 600 white
7911293 KTD A 500 black
7911294 KTD A 600 black

Old hood

Replacement Vallox X-Line hood

Replacement Vallox Delico hood

KTXEA and KTC EA cooker hoods

These cooker hoods are connected to the joint extraction system of multi-storey buildings. They enable the removal of cooking smells to be boosted by means of a timer damper and also include a smoke limiter.



Vallox X-Line KTXA cooker hood and Vallox Smoke Limiter

These cooker hoods have fixed glass and a damper with a timer function.

HVAC codes:
7911125 KTXA 500 white
7911127 KTXA 600 white
7911286 Smoke limiter



Vallox Delico KTD A cooker hood and Vallox Smoke Limiter

These cooker hoods have a steam collection part that can be pushed inside the hood, a damper with a timer function and a guard function.

HVAC codes:
7911291 KTD A 500 white
7911292 KTD A 600 white
7911293 KTD A 500 black
7911294 KTD A 600 black
7911286 Smoke limiter

The smoke limiter meets the requirements set for a choke used in a joint duct system (max. 42 l/s/100 pa). The air volume of the new cooker hood and smoke limiter must be adjusted to the same as in the old cooker hood by using the cooker hood damper and the adjustment damper on the smoke limiter.

LT, LTX and LTC cooker hoods

These cooker fans have their own actuator.



Vallox X-Line TTXP EC house extraction fan

The TTXP EC house extraction fan has fixed glass, a fan speed adjustment, an EC fan, and a damper. The 0 position is activated during the setup phase. When used as a cooker hood, the house extraction fan's outlet collars are left plugged.

HVAC codes:
7911309 TTXP EC 500 White
7911311 TTXP EC 600 White



Vallox Delico PTD EC cooker hood and Vallox Duct fan

The PTD EC cooker hood has a steam collection part that can be pushed inside the hood, fan speed adjustment, a damper with a timer function and a guard function. The On/Off switch is only used when needed. The duct fan has an EC fan, and it can be installed above the cooker hood or, e.g., on the false ceiling in the kitchen or bathroom. When used as a cooker hood, the duct fan's outlet collars are left plugged.

HVAC codes:
7911287 PTD EC 500 white
7911288 PTD EC 600 white
7911289 PTD EC 500 black
7911290 PTD EC 600 black
7911305 Duct fan

TT, TTX, TTXP, TTXR, TTC and ILMO cooker hoods

These models have a fan installed above the cooker top, which removes cooking smells but also serves as the extraction air unit of the entire apartment or removes the cooking smells generated by a separate wood-burning cooker. There are three outlet collars on top of the house extraction fan. The middle one is used for blowing exhaust air towards the roof, whilst the other two are connected to the extraction air ducts led e.g. from the bathroom and the toilet.



Vallox X-Line TTXP EC house extraction fan

The TTXP EC house extraction fan has fixed glass, a fan speed adjustment, an EC fan, and a damper. If your old house extraction fan has an On/Off switch, you can activate the TTXP EC's 0 position during the setup phase. One of the house extraction fan's outlet collars can be left plugged.

HVAC codes:

7911309 TTXP EC 500 White

7911311 TTXP EC 600 White



Vallox Delico PTD EC cooker hood and Vallox Duct fan

The PTD EC cooker hood has a steam collection part that can be pushed inside the hood, fan speed adjustment, a damper with a timer function and a guard function. The On/Off switch is only used when needed. The duct fan has an EC fan, and it can be installed above the cooker hood or, e.g., on the false ceiling in the kitchen or bathroom. One of the duct fan's outlet collars can be left plugged.

HVAC codes:

7911287 PTD EC 500 white

7911288 PTD EC 600 white

7911289 PTD EC 500 black

7911290 PTD EC 600 black

7911305 Duct fan

VALLOX

www.vallox.com

Vallox Oy | Myllykyläntie 9-11 | 32200 LOIMAA | FINLAND