



VASCUPEDIA

ChEVAR for a juxtarenal aneurysm with impending rupture using brazilian endovascular devices

Eduardo Sansolo, MD

Vascular and Endovascular Surgery

Recife-Brazil



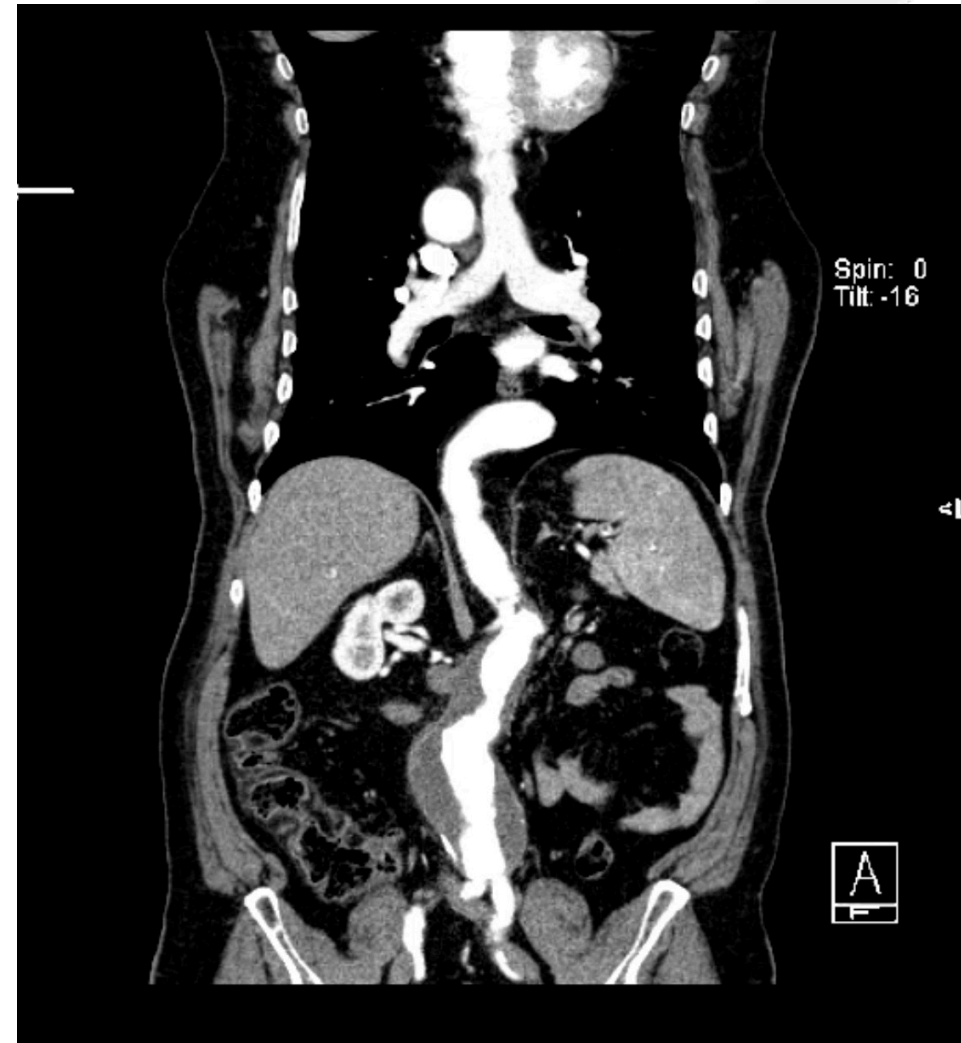
PMH

- Male
- 74 years old
- Hypertension
- Diabetes
- CPOD
- CKD under conservative treatment CrCl 34 mL/min/1.73m

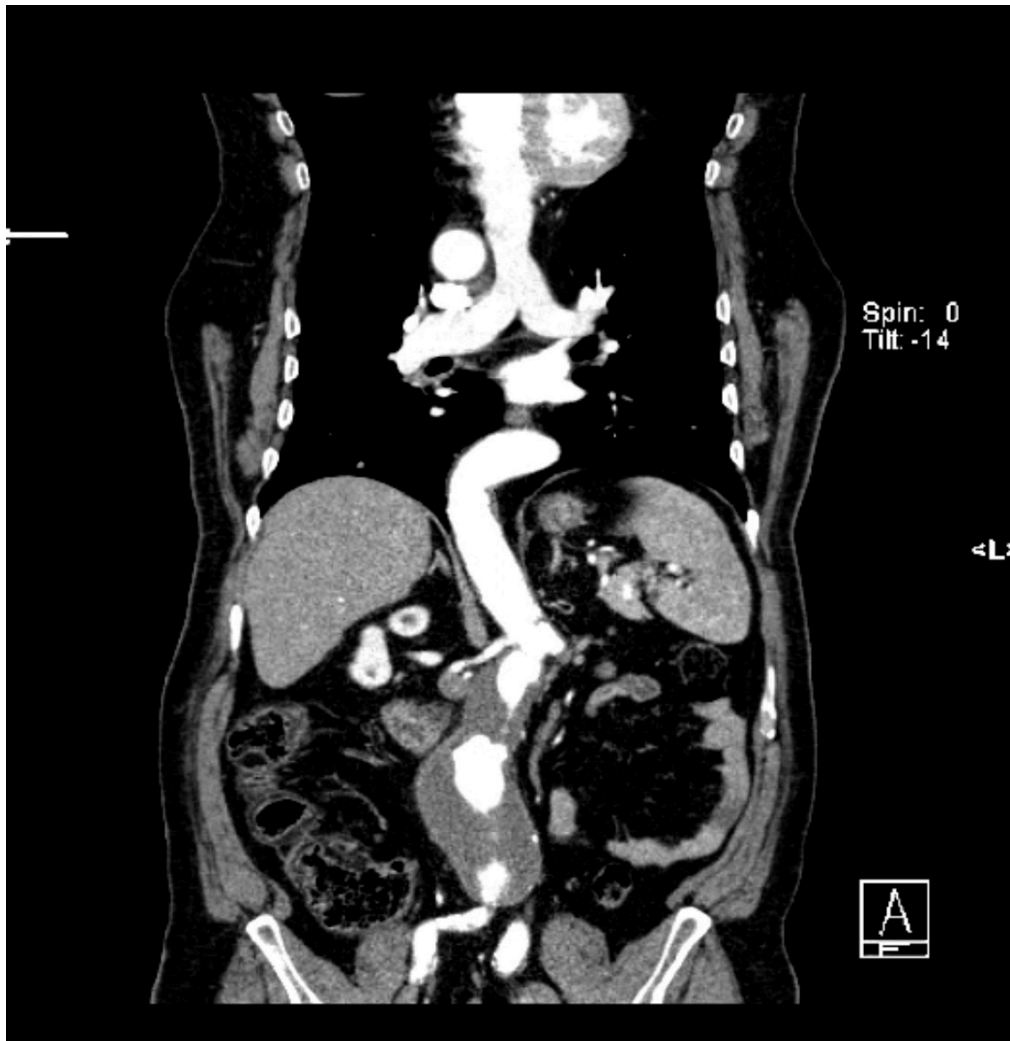
Presenting symptoms

- Under surveillance for an asymptomatic 5 cm infra-renal AAA.
- Presenting to our service with history of abdominal pain for one week
- Repeated the CT showing a 6,0cm juxtarenal aneurysm (growing 4 months)
- Additional findings: - chronic occluded left renal artery
- -same level emergency RRA and SMA

CT findings



CT findings



Treatment options

- Open surgery
- Debranching procedure
- fEVAR
- chEVAR



ChEVAR

- chEVAR with the off-the-shelf 35mm Ortic abdominal stent-graft using the celiac trunk as the landing zone and revascularizing the RRA and SMA with a 6 and 7/60mm Solaris self-expandable covered-stent. We performed percutaneous bilateral femoral access and percutaneous right axillary artery access using the Perclose technique with 2 Perclose Proglide in each site.

ChEVAR

- Self-expandable stent-graft
- Nitinol + PTFe endoeskeleton
- Low profile
- Repositionable
- Free-flo
- Controlled deployment
- Hydrophilic catheter
- Brazilian device – Inside Medical



ChEVAR

- Self-expandable covered-stent
- Nitinol + PTFe
- Brazilian device – SciTech

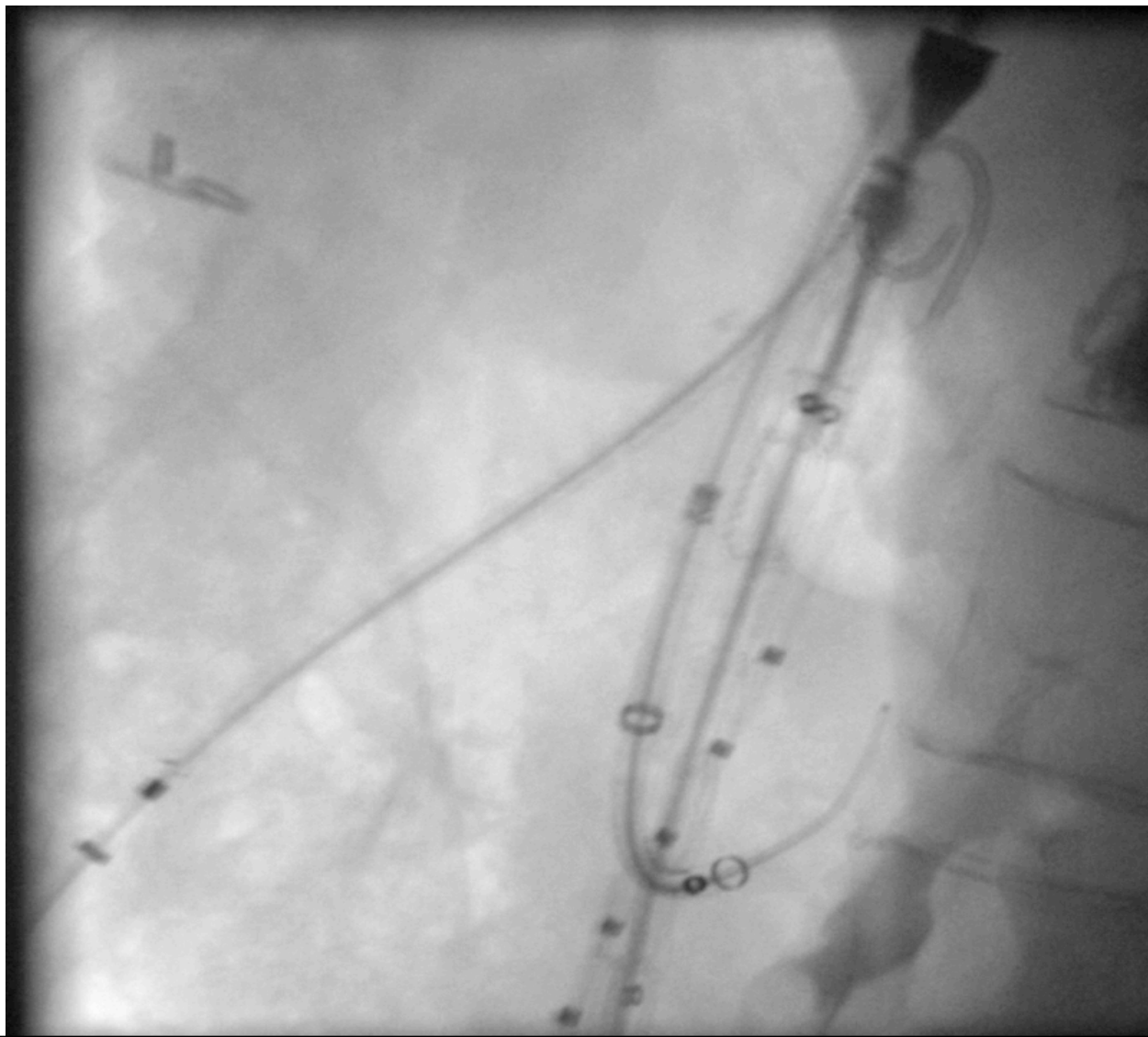


SOLARIS Endoprosthesis is a flexible self-expanding stent graft, comprised of a durable electrospinning PTFE membrane encapsulating a Nitinol stent structure.

ChEVAR



ChEVAR



ChEVAR

