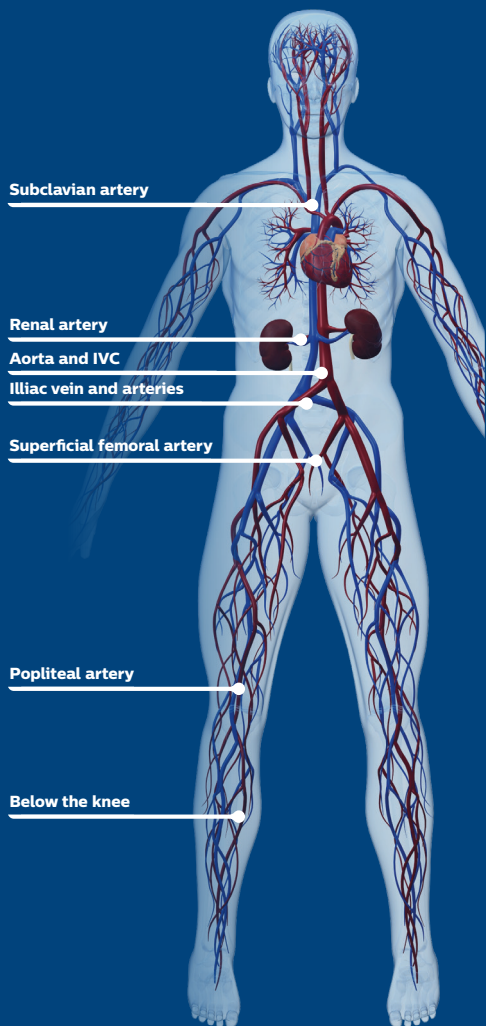


## A full line of peripheral IVUS catheters to help guide your treatment strategies

Choose your catheter based on imaging diameter and wire compatibility needed



### Visions PV .035 catheter

with centimeter markers

0.035" guide wire compatible

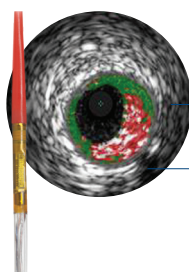
60 mm max imaging diameter



### Visions PV .018 catheter

0.018" guide wire compatible

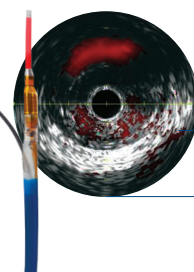
24 mm max imaging diameter



### Visions PV .014P RX catheter

0.014" guide wire compatible

20 mm max imaging diameter



### Pioneer Plus IVUS-guided re-entry catheter

0.014" guide wire compatible

20 mm max imaging diameter

## IVUS allows assessment of:

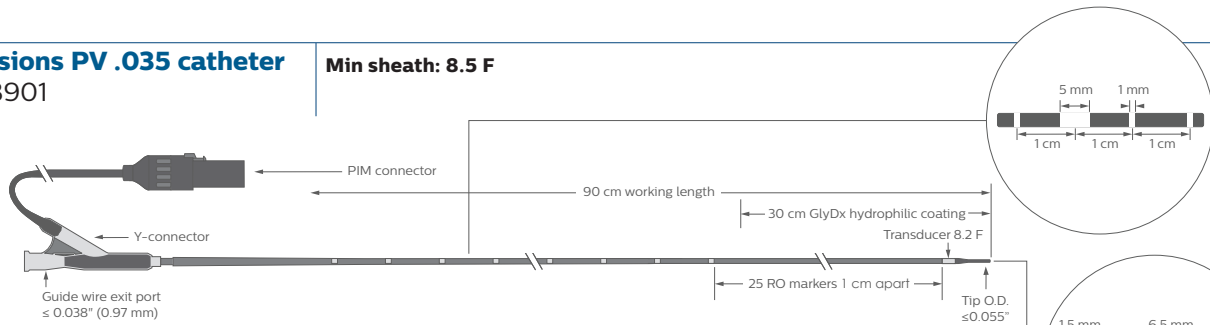
- % Stenosis
- Length of stenosis
- Location of side branches (without using contrast)
- Calcium and thrombus
- Dissection
- Completeness of treatment
- Real time vessel diameters
- Position of wire in true or false lumen

# Ordering information and technical specifications

## Visions PV .035 catheter

88901

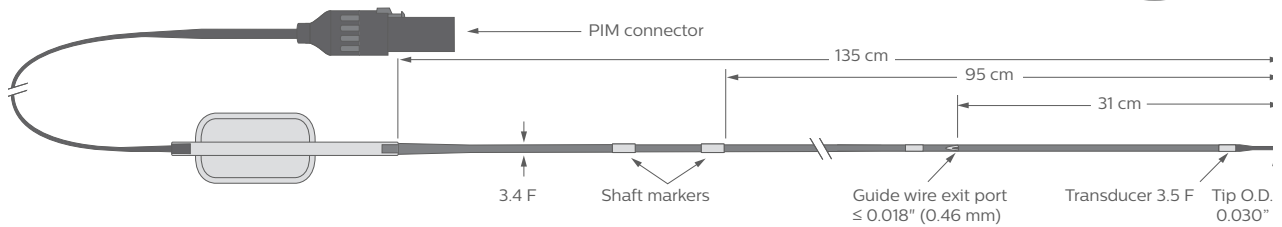
Min sheath: 8.5 F



## Visions PV .018 catheter

86700

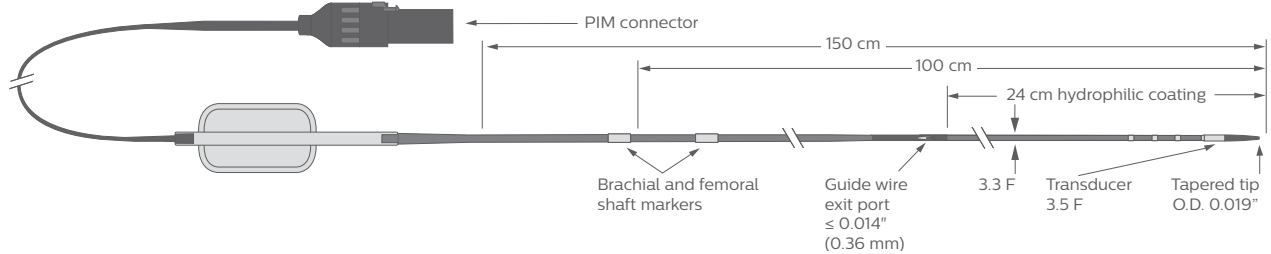
Min sheath: 6 F



## Visions PV .014P RX catheter

014R

Min sheath: 5 F



## Pioneer Plus catheter

PPLUS120

Min sheath: 6 F

