



**SHOCKWAVE** | **S<sup>4</sup>**

## IVL Optimized for Challenging Calcified Below-the-Knee Disease

### PREDICTABLY SAFE

Safely modify calcium while significantly reducing the risk of complications to make procedures more predictable and efficient.

### DISTINCTLY INTUITIVE

Simplify the treatment of calcium from the very first case via a unique MOA on an intuitive platform.

### CONSISTENTLY EFFECTIVE

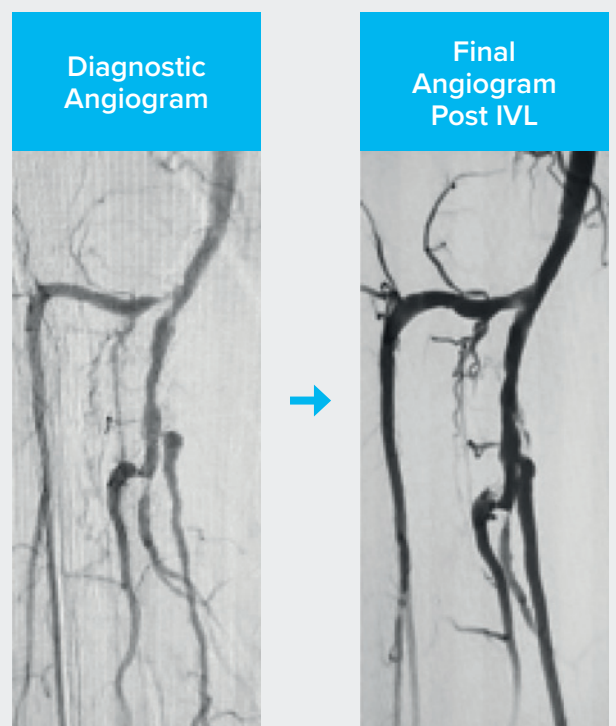
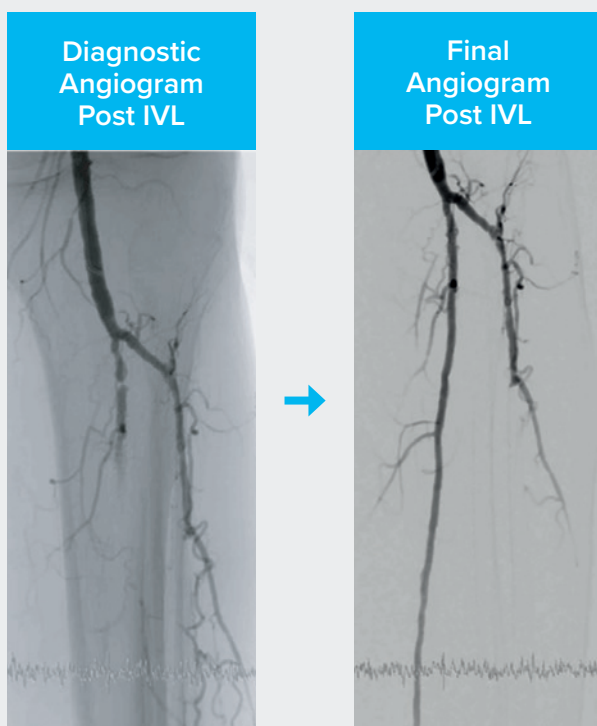
Proven to achieve a low residual stenosis across multiple vessel beds by disrupting superficial and deep calcium.

## Effective in Both Intimal and Medial Calcium

IVL is effective at fracturing superficial and deep calcium in the vessel wall.

OCCLUDED POSTERIOR TIBIAL ARTERY

CALCIFIED ANTERIOR AND POSTERIOR  
TIBIAL ARTERY BIFURCATION



Courtesy of Prof. Patrice Mwipatayi

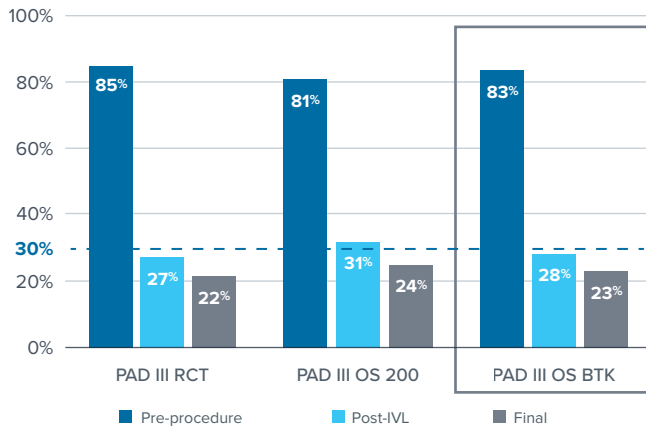
Courtesy of Dr Roger Gammon



## PAD III OS Interim Analysis: IVL Treatment of Calcified Infrapopliteal Arteries

Disrupt PAD III OS BTK outcomes add to the IVL body of evidence, confirming the consistent safety and effectiveness of IVL across multiple vessel beds.

### Diameter Stenosis (Core-Lab)



### Final Angiographic Complications (Core-Lab)

	PAD III RCT	PAD III OS 200 <sup>1</sup>	PAD III OS BTK <sup>2</sup>
N	153	200	96
Vessels	SFA/Pop	Iliac, CFA, SFA/ Pop, BTK	Infrapopliteal
Dissection (Type D-F)	0%	1.1%	0%
Perforation	0%	0.5% <sup>1</sup>	0%
Embolization	0%	0%	0%
Thrombus	0%	0%	0%
No reflow	0%	0%	0%
Abrupt closure	0%	0%	0%

<sup>1</sup>Following DCB inflation; unrelated to IVL

1. Adams et al., JEVT, 2020;27(3):473-480. 2. Data presented by G. Adams, LINC 2021

### IVL GENERATOR AND CONNECTOR CABLE SPECS

<b>Power</b>	110-240 VAC; 50-60Hz; Single Phase, 15A service
<b>Size</b>	11" (28.0 cm) high x 6" (15.2 cm) wide x 11.5" (29.2 cm) deep
<b>Weight</b>	15 pounds (6.8 kg)
<b>Output</b>	Proprietary pulse delivery system. Output voltage 3000 volts peak, pulse frequency 1Hz
<b>Mobility</b>	Product is designed to be mounted to an IV pole
<b>Length</b>	5 ft (1.53m)
<b>Compatibility</b>	Proprietary male key distally designed to connect only to catheter.
<b>Operation</b>	Lithotripsy pulsing is activated by pushing a button on the Connector Cable.
<b>Use</b>	Re-usable



IVL Generator

CATALOG NUMBER:  
**IVLGCCD**



IVL Connector Cable

CATALOG NUMBER:  
**IVLCC**

### IVL CATHETER SPECS

Catalog Number	Diameter (mm)	Length (mm)	Emitters	Pulses/Cycle	Cycles	Guidewire (in)	Sheath Compat.	Working Length (cm)	GTIN
S4IVL2540	2.5	40	4	20	8	0.014	5F	135	0019545100004
S4IVL3040	3.0	40	4	20	8	0.014	5F	135	0019545100005
S4IVL3540	3.5	40	4	20	8	0.014	5F	135	0019545100006
S4IVL4040	4.0	40	4	20	8	0.014	5F	135	0019545100007

### STERILE SLEEVE SPECS

Catalog Number	Length (cm)	Length (in)	Description	Quantity	GTIN
IVL10CS	13 x 244	5 x 96	IVL Cable Sleeve	10	(01)10848340014571

Discover how you can treat calcium more effectively  
with the Peripheral Intravascular Lithotripsy (IVL) System.  
Visit [shockwavemedical.com](http://shockwavemedical.com) for more information.

Prior to use, please reference the Instructions for Use for more information on indications, contraindications, warnings, precautions and adverse events.  
[www.shockwavemedical.com](http://www.shockwavemedical.com)

© 2021 Shockwave Medical Inc. All rights reserved. SPL 65001 Rev. A