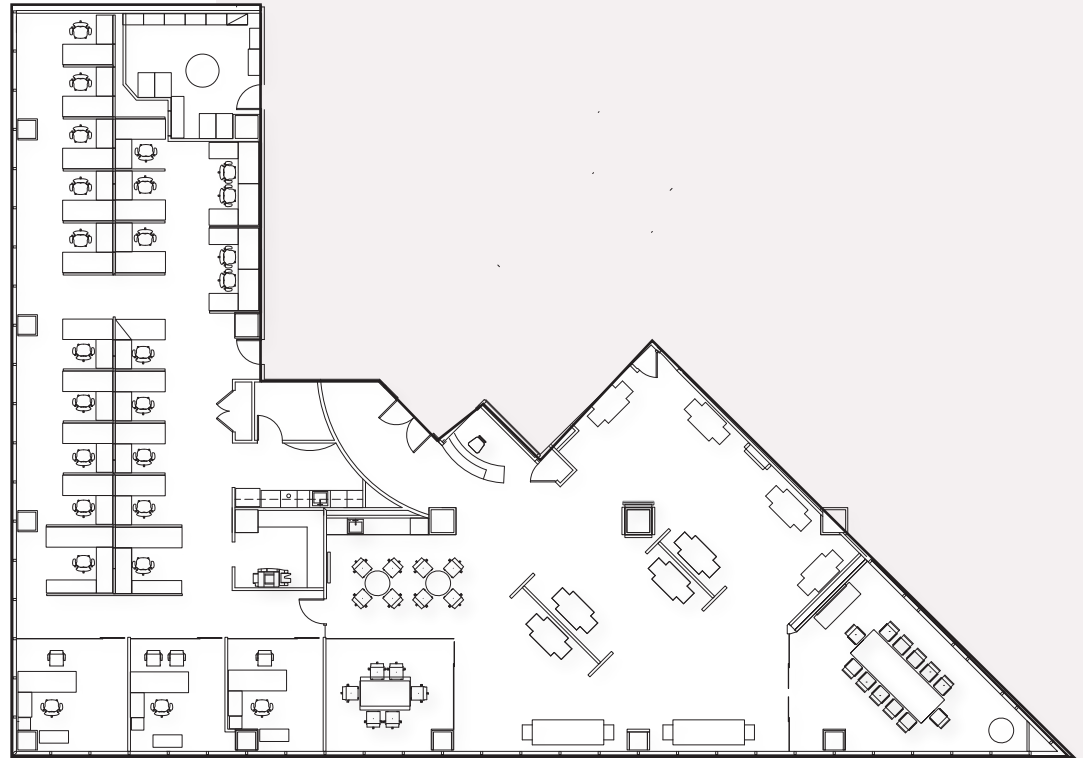
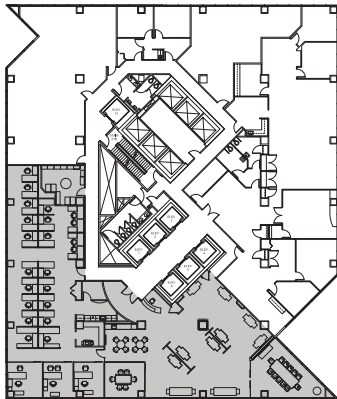


SUITE 2110

7,538 RSF



For more information, contact the leasing team:

SARA SPICKLEMIRE

Senior Vice President

+1 312 861 7864

sara.spicklemire@cbre.com

KELSEY SCHEIVE

Vice President

+1 312 935 1910

kelsey.scheive@cbre.com

SETH TUSCHER

Vice President

+1 312 935 1920

seth.tuscher@cbre.com

www.150northmichigan.com

www.AboveandBeyondforBusiness.com

150 NORTH MICHIGAN AVE | CHICAGO, IL 60601

A&B™ | CBRE

