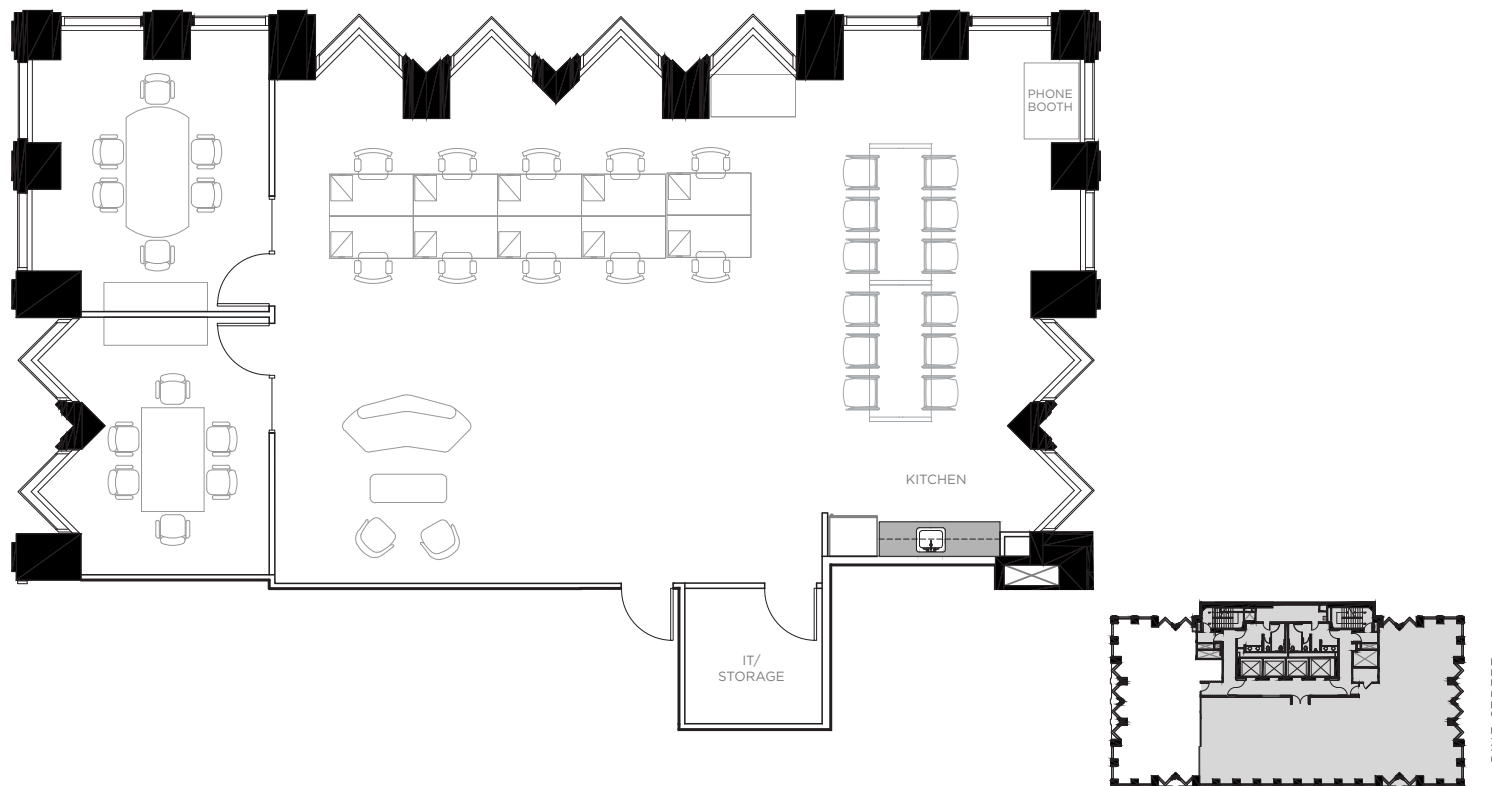


235  
PINE

**SUITE 750**  
**±2,816 RSF**

**FEATURES:**

- Recently improved **plug & play** suite
- 2 conference rooms, open kitchen, storage/IT room, open area with 10 workstations, collaboration/lounge area
- Available now



Sam Stein | T +1 415 772 0209 | C +1 415 706 9111 | sam.stein@cbre.com | Lic. 02026162

CBRE | 415 Mission Street, 46th Floor, San Francisco CA 94105 | www.cbre.com/sfcd



[www.235pine.com](http://www.235pine.com)

**CBRE**