

# 10<sup>th</sup> Floor – Suite 1025 – 1,854 rsf

**RUSS BUILDING**  
235 MONTGOMERY



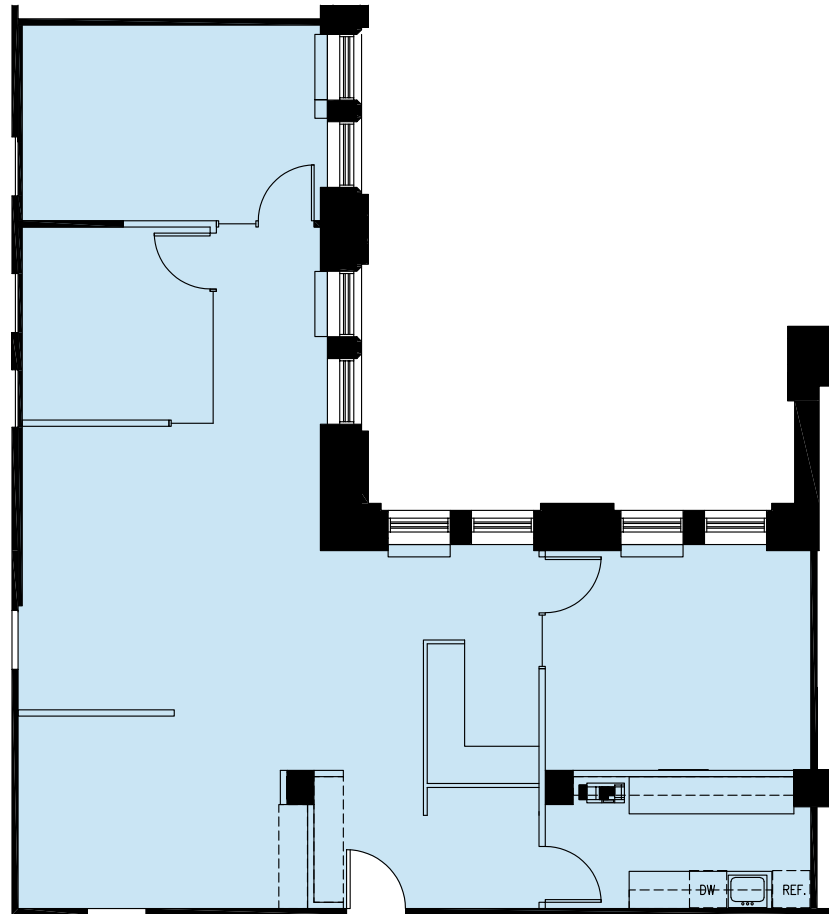
[www.russbldg.com](http://www.russbldg.com)

Jim Collins  
415.352.7239

[jcollins@shorenstein.com](mailto:jcollins@shorenstein.com)  
CA RE 00860991

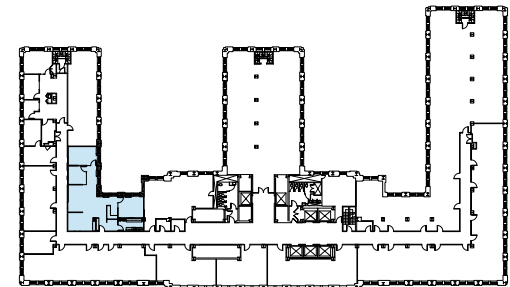
Tom McDonnell  
415.772.7086

[tmcdonnell@shorenstein.com](mailto:tmcdonnell@shorenstein.com)  
CA RE 01011145



- 3 window-line private offices
- Open area for workstations, conference room
- Reception area
- Break room with sink, cabinetry and appliances

This floor plan has been obtained from sources believed reliable, but has not been verified for accuracy or completeness. You should conduct a careful, independent investigation of the property and the floor plan, and verify all information prior to designing or building based on the information shown. Any reliance on this information is solely at your own risk.



235 Montgomery St.  
San Francisco, CA 94104